



**Rossdale Power Plant  
Advanced Assessment  
and Priority Rehabilitation**  
Turbine Hall Archival Photographic Record

DFS | MBAC | Saucier + Perrotte Architectes  
Submitted to: City of Edmonton  
Date Submitted: 2021-03-15  
Revised: 2021-12-09  
Prepared by:

Architectural/Heritage - DFS  
Bianca Hacker, Bianca Dahlman, Evan Oxlund, Pascal Létourneau, Dan



# Table of Contents

1.0 Photographic Data .....	3
2.0 Legend .....	4
3.0 Aerial Drone Photograph .....	5
4. 0 Key Plan .....	6
5.0 Photographic Archive.....	18
5.1 Exterior.....photographs (1) – (13).....	12
5.2 Interior.....photographs (13) – (277) .....	14
5.2.1 Main Floor.....(13) – (162).....	14
5.2.2 Basement.....(163) – (277).....	52

## 1.0 Photographic Data

The information compiled in the Archival Photographic Record showcases data derived from the Turbine Hall Building Conditions Assessment, the Turbine Hall Building Record and photographic data compiled from MiraCAD and drone footage (with the exception of photograph #8, which was taken by a Pixel 3a Smartphone Camera). All photographs were taken on September 16, 2020 and October 23, 2020, with either a Sony A7RIII Mirrorless Camera Body with a Sony SEL FE 20mm f/1.8 G Lens or a DJI Mavic 2 Pro on board camera.

The Sony A7RIII was fixed to a robotic panoramic rig that rotated 360 degrees, a MiraCAD developed product (pictured below). Each station had 15 positions capturing 3 bracketed images at 3 EV3; for a total of 45 images per station. Lights were used to illuminate darker spaces and photos were taken in high, low and medium light levels. The stations were located at various positions around the building to create a blended, tone mapped and stitched together 3D depiction, which was accomplished by MiraCAD with computer software.



All of the UAV (unmanned aerial vehicle) photos were taken with the DJI Mavic 2 Pro on board camera. For all five flights, there was a total of 1,234 images taken at elevations between 75 – 200 ft above ground level. The images were processed and stitched together by MiraCAD using computer software.

Disclaimer: MiraCAD Technologies Inc. provided services and proprietary access to Cloud360 data. Most of the photos in the following report were derived from Cloud360, a web-based software enabling users to view high resolution imagery.

### **Photographed and Catalogued by:**

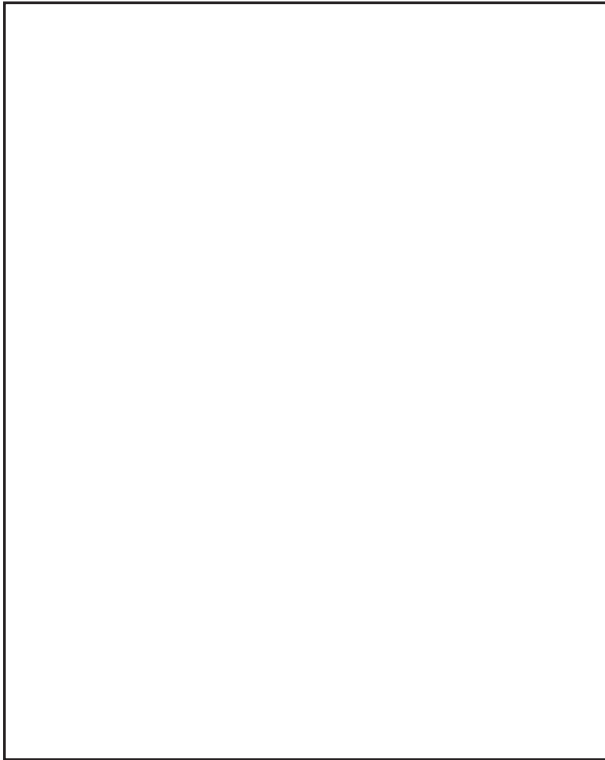
Bianca Dahlman

Bianca Hacker

Evan Oxland

MiraCAD Technologies Inc.

## 2.0 Legend



2021\_01\_26\_CoE\_ROS106\_(1).jpg

Listed under each archival photograph is a date, Building ID and number.

Date: YEAR\_MONTH\_DAY depicting when the archival record was created.

Building ID: CoE\_ROS###

Number: (#) referring to and in correspondence with the key plan.

The Key Plan notes the location of where each photograph was taken from and the angle in which it was taken.



Horizontal (eye-level perspective)



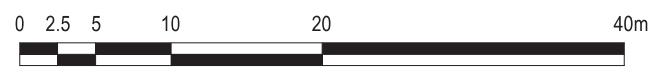
Bird's Eye View (looking down)

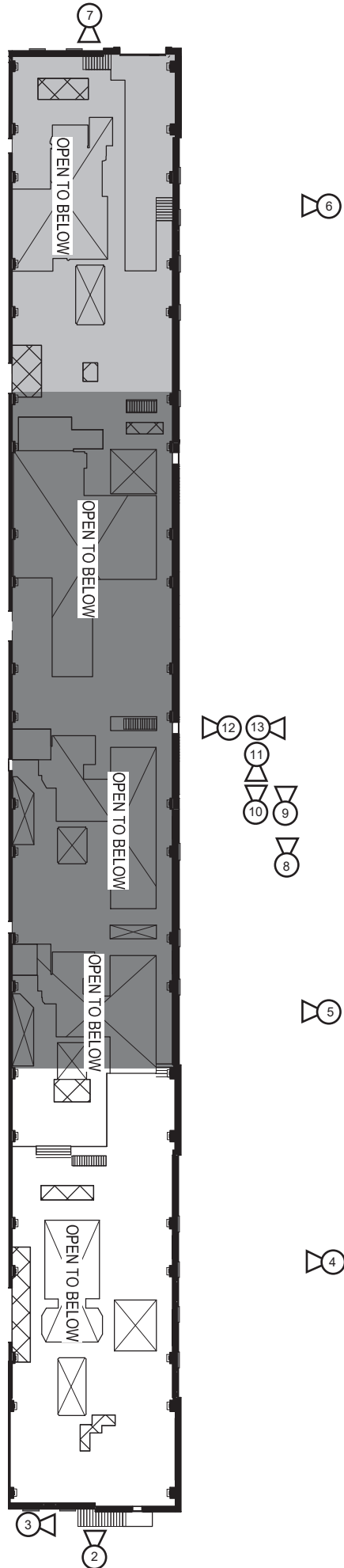


Worm's Eye View (looking up)

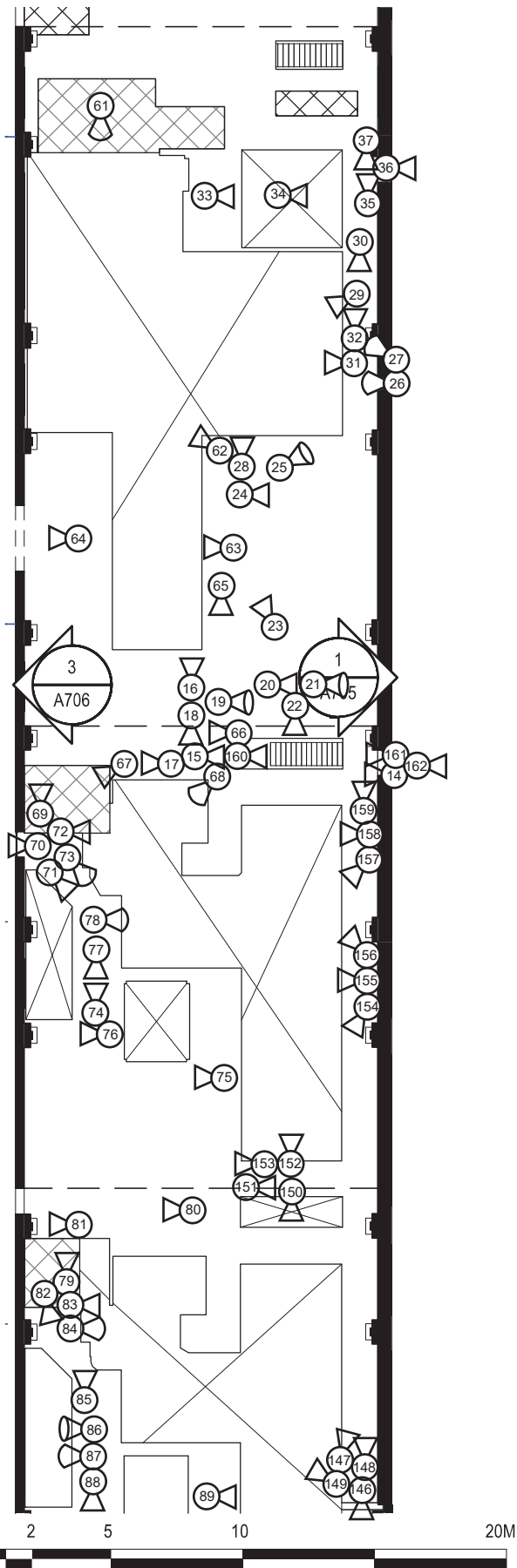
Building ID	Building Name
ROS105	Rossdale Low Pressure Power Plant – Switch House
ROS106	Rossdale Low Pressure Power Plant – Turbine Hall
ROS107	Rossdale Low Pressure Power Plant – Boiler Hall
ROS108	Rossdale Pump House #1
ROS109	Rossdale Pump House #2
ROS112	Rossdale ATCO Gas Building

### 3.0 Aerial Drone Photograph

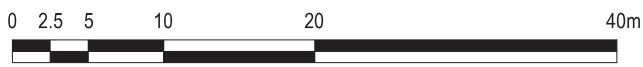
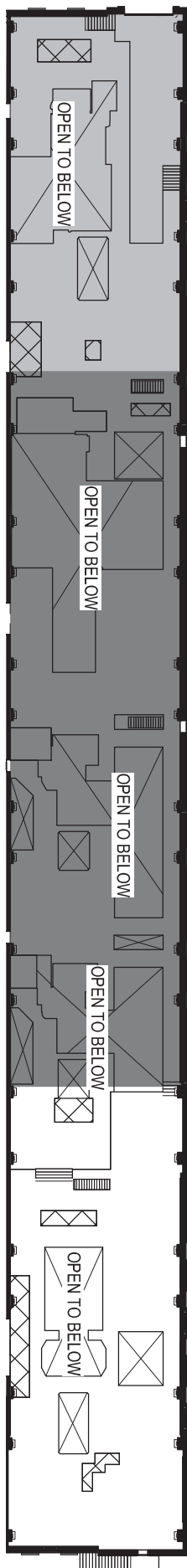




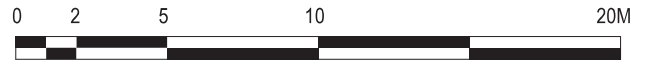
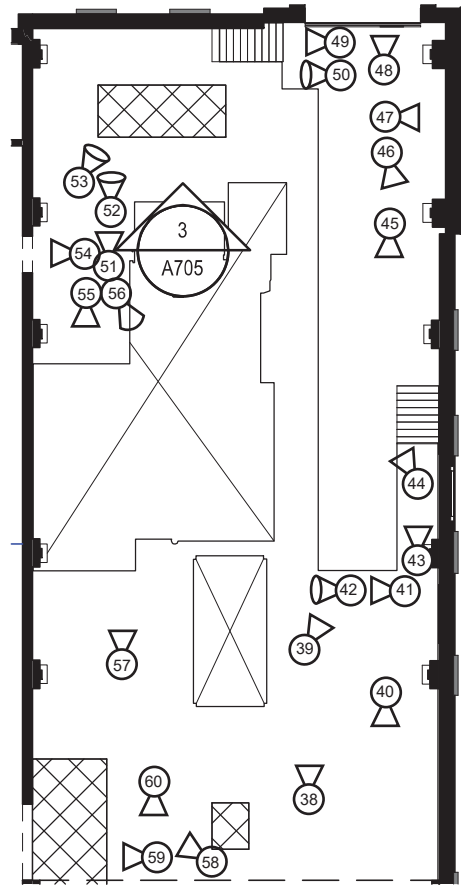
**1** KEY MN - TURBINE HALL  
1 : 500



**1** MN - TURBINE HALL - CENTRE  
1 : 250



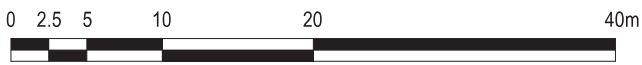
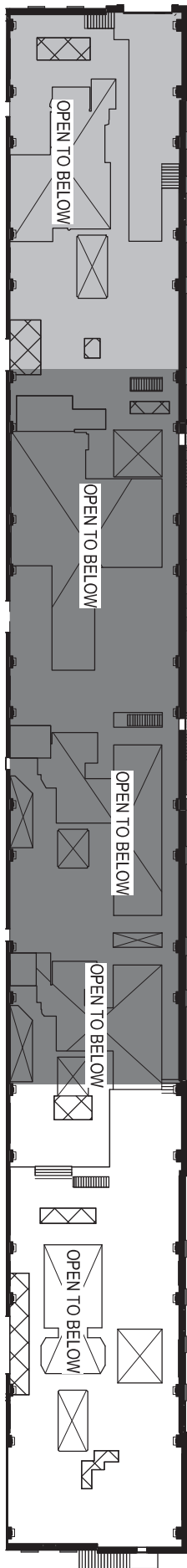
1 KEY MN - TURBINE HALL  
1 : 500



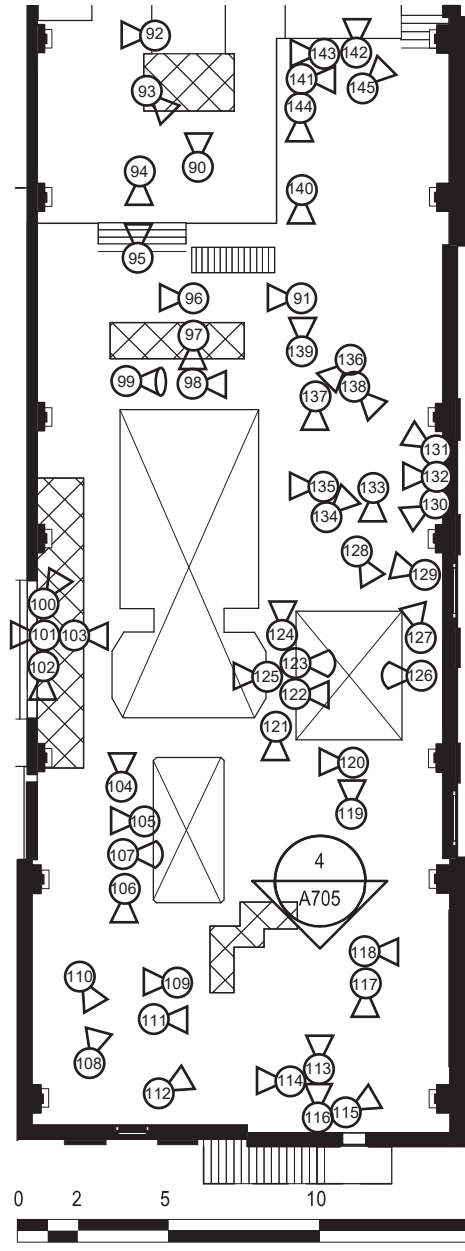
2 MN - TURBINE HALL - NORTH  
1 : 250



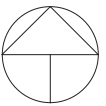


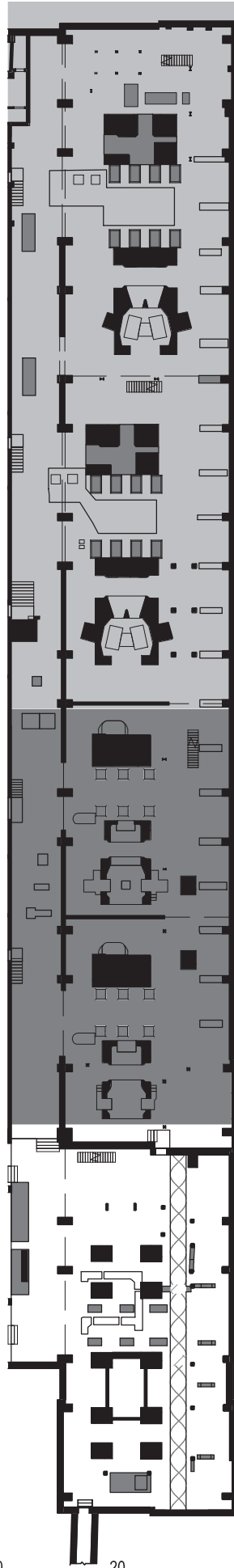


1 KEY MN - TURBINE HALL  
1 : 500

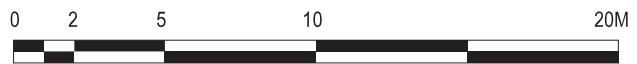
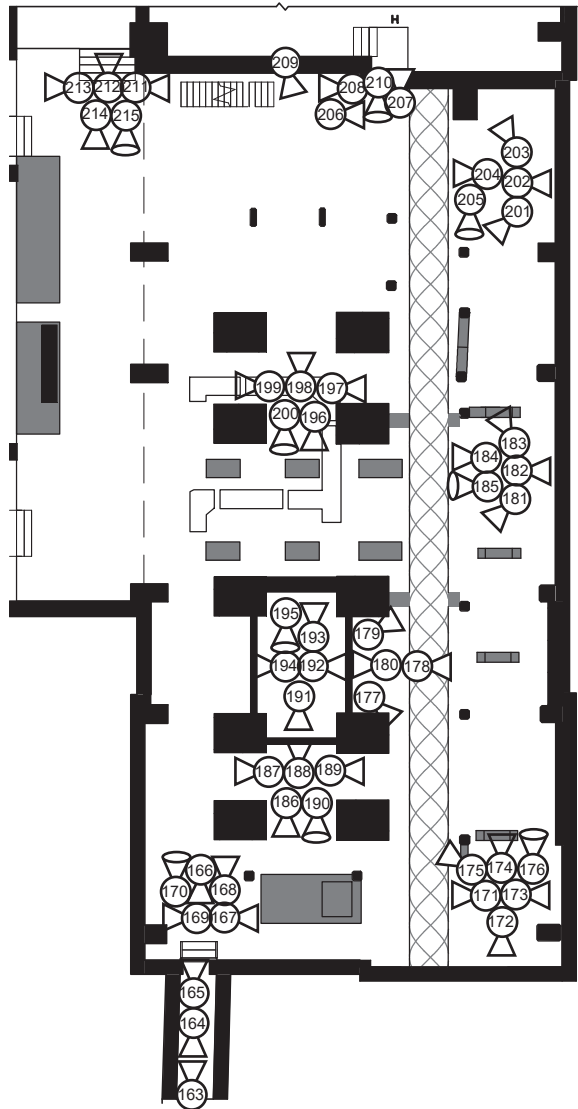


3 MN - TURBINE HALL - SOUTH  
1 : 250



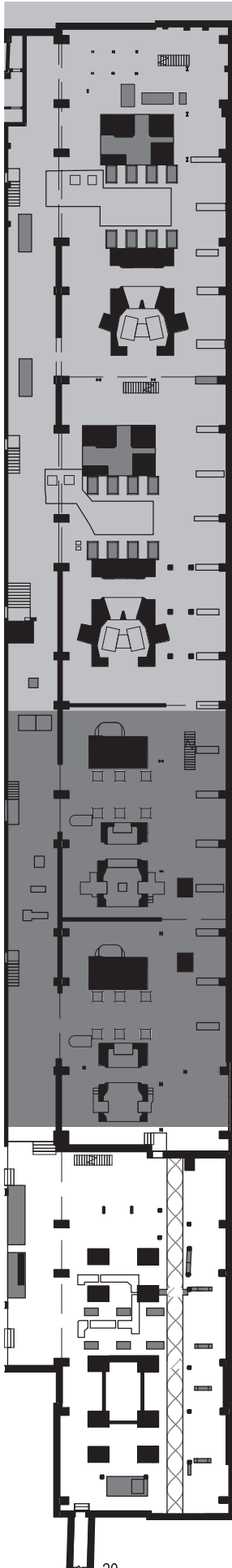


1 KEY BM - TURBINE HALL  
1 : 500

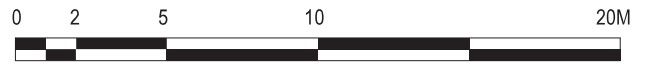
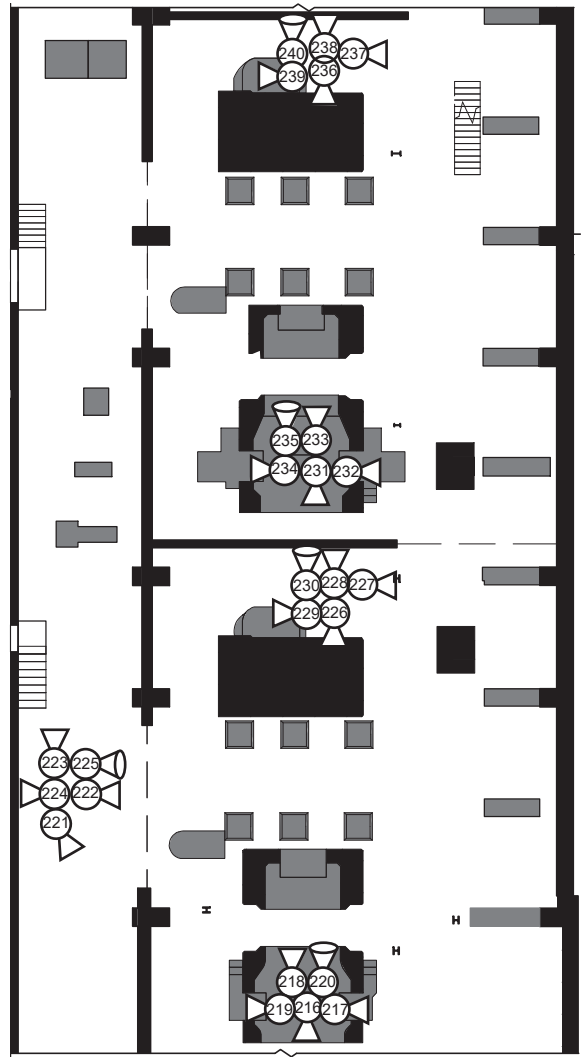


1 BM - TURBINE HALL - SOUTH  
1 : 250

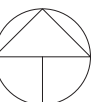


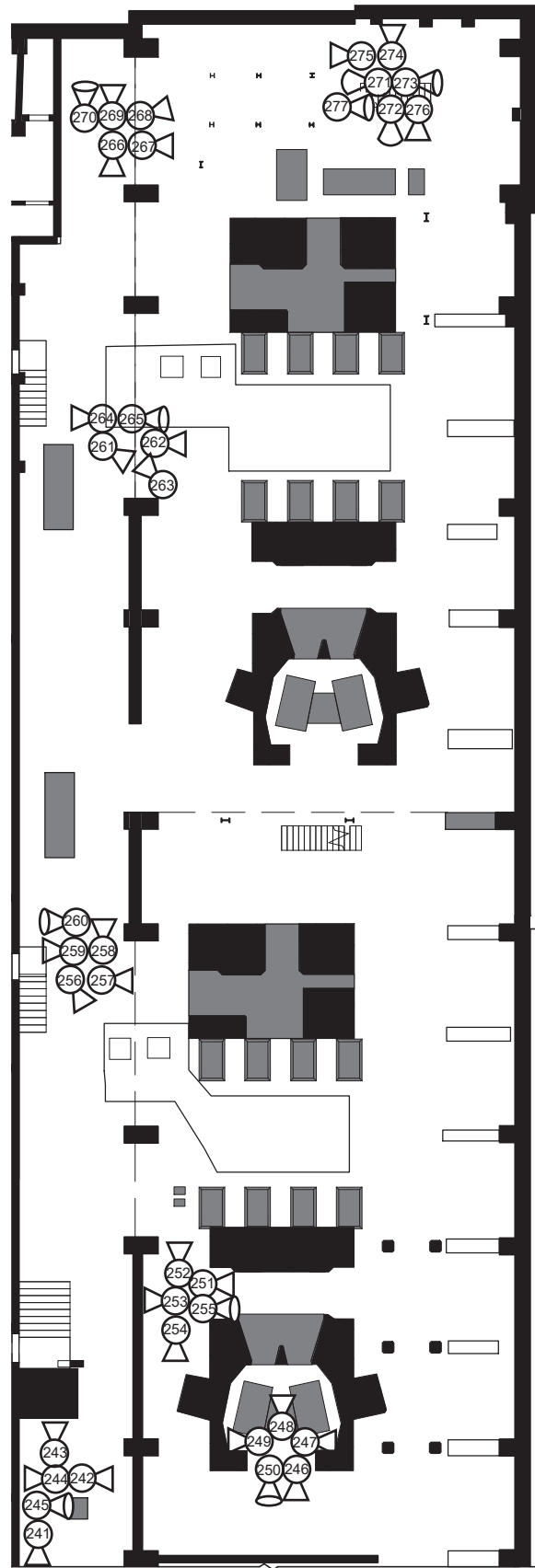
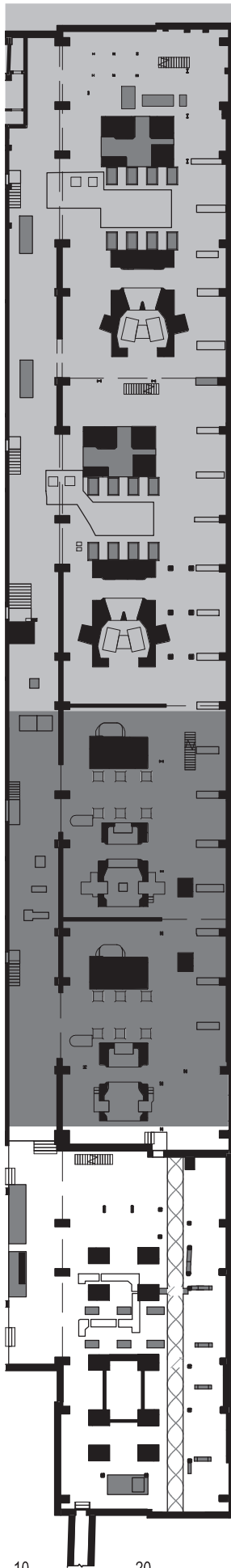


1 KEY BM - TURBINE HALL  
1 : 500



2 BM - TURBINE HALL - CENTRE  
1 : 250





0 2.5 5 10 20 40m

1 KEY BM - TURBINE HALL

1 : 500

0 2 5 10 20M

3

BM - TURBINE HALL - NORTH

1 : 250

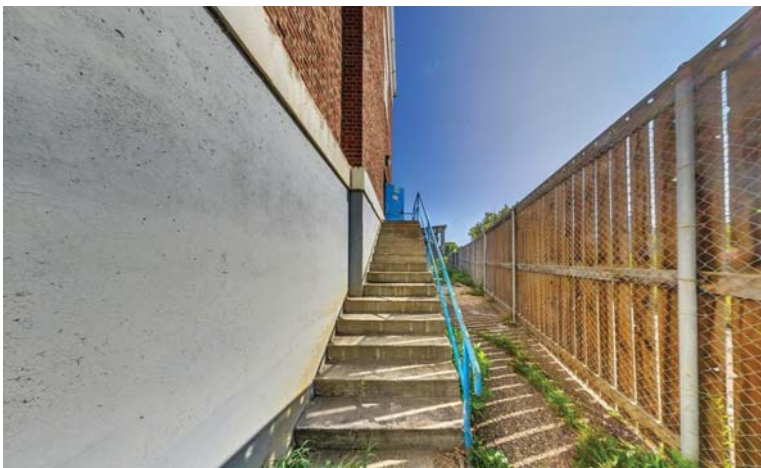




2021\_02\_18\_CoE\_ROS106\_(1).jpg



2021\_02\_18\_CoE\_ROS106\_(2).jpg



2021\_02\_18\_CoE\_ROS106\_(3).jpg



2021\_02\_18\_CoE\_ROS106\_(4).jpg



2021\_02\_18\_CoE\_ROS106\_(5).jpg



2021\_02\_18\_CoE\_ROS106\_(6).jpg



2021\_02\_18\_CoE\_ROS106\_(7).jpg



2021\_02\_18\_CoE\_ROS106\_(8).jpg



2021\_02\_18\_CoE\_ROS106\_(9).jpg



2021\_02\_18\_CoE\_ROS106\_(10).jpg



2021\_02\_18\_CoE\_ROS106\_(11).jpg



2021\_02\_18\_CoE\_ROS106\_(12).jpg



2021\_02\_18\_CoE\_ROS106\_(13).jpg



2021\_02\_18\_CoE\_ROS106\_(14).jpg



2021\_02\_18\_CoE\_ROS106\_(15).jpg



2021\_02\_18\_CoE\_ROS106\_(16).jpg





2021\_02\_18\_CoE\_ROS106\_(17).jpg



2021\_02\_18\_CoE\_ROS106\_(18).jpg



2021\_02\_18\_CoE\_ROS106\_(19).jpg



2021\_02\_18\_CoE\_ROS106\_(20).jpg



2021\_02\_18\_CoE\_ROS106\_(21).jpg



2021\_02\_18\_CoE\_ROS106\_(22).jpg



2021\_02\_18\_CoE\_ROS106\_(23).jpg



2021\_02\_18\_CoE\_ROS106\_(24).jpg



2021\_02\_18\_CoE\_ROS106\_(25).jpg



2021\_02\_18\_CoE\_ROS106\_(26).jpg



2021\_02\_18\_CoE\_ROS106\_(27).jpg



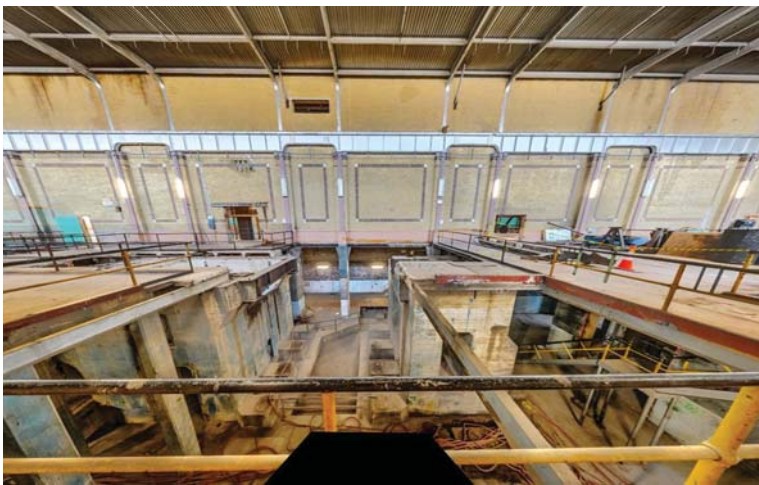
2021\_02\_18\_CoE\_ROS106\_(28).jpg



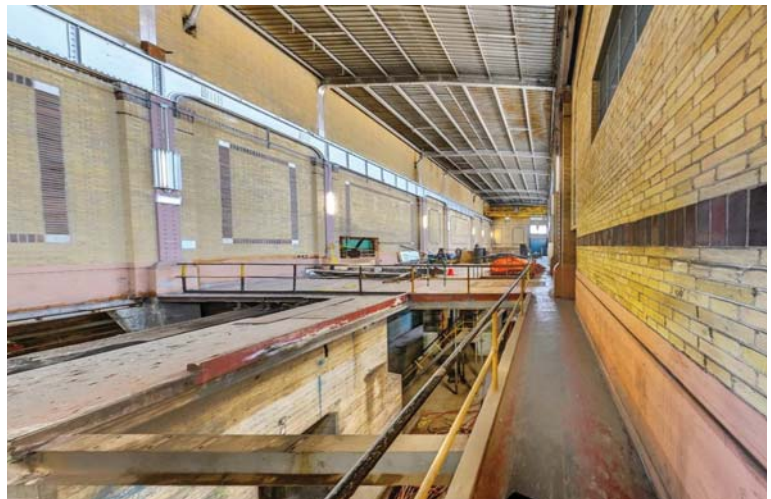
2021\_02\_18\_CoE\_ROS106\_(29).jpg



2021\_02\_18\_CoE\_ROS106\_(30).jpg



2021\_02\_18\_CoE\_ROS106\_(31).jpg



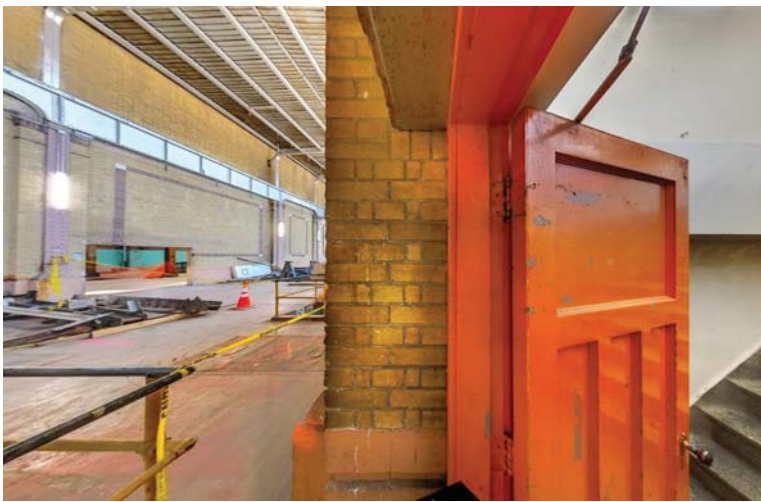
2021\_02\_18\_CoE\_ROS106\_(32).jpg



2021\_02\_18\_CoE\_ROS106\_(33).jpg



2021\_02\_18\_CoE\_ROS106\_(34).jpg



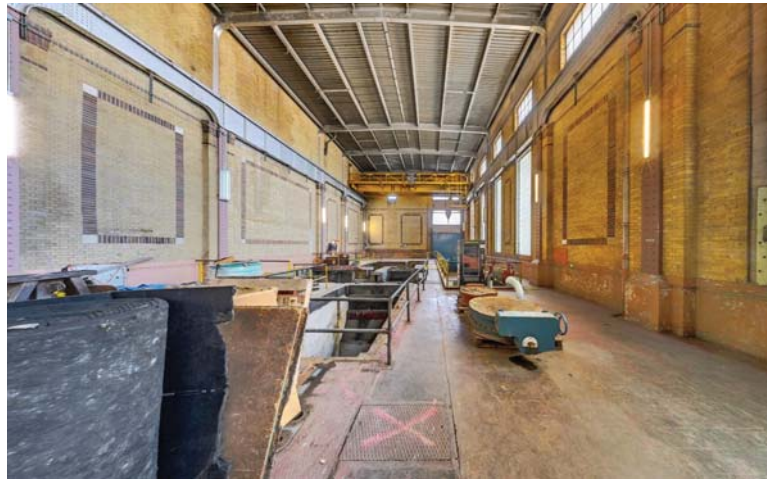
2021\_02\_18\_CoE\_ROS106\_(35).jpg



2021\_02\_18\_CoE\_ROS106\_(36).jpg



2021\_02\_18\_CoE\_ROS106\_(37).jpg



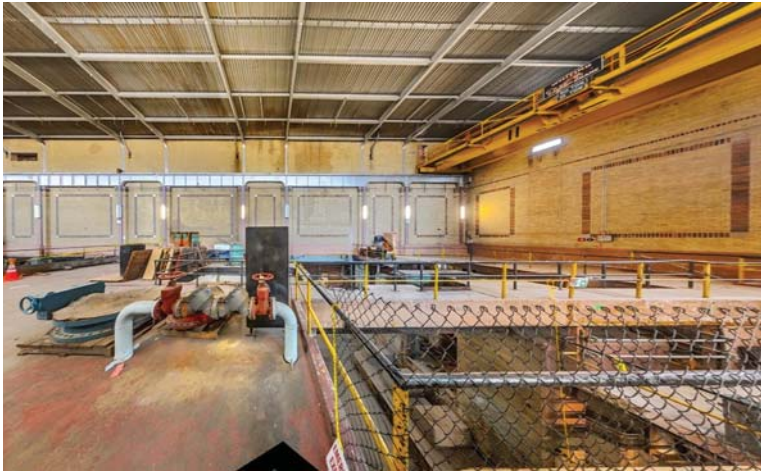
2021\_02\_18\_CoE\_ROS106\_(38).jpg



2021\_02\_18\_CoE\_ROS106\_(39).jpg



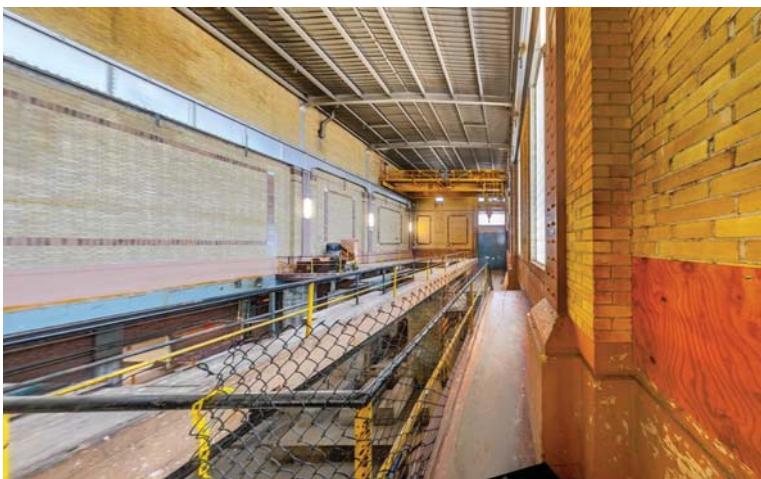
2021\_02\_18\_CoE\_ROS106\_(40).jpg



2021\_02\_18\_CoE\_ROS106\_(41).jpg



2021\_02\_18\_CoE\_ROS106\_(42).jpg



2021\_02\_18\_CoE\_ROS106\_(43).jpg



2021\_02\_18\_CoE\_ROS106\_(44).jpg



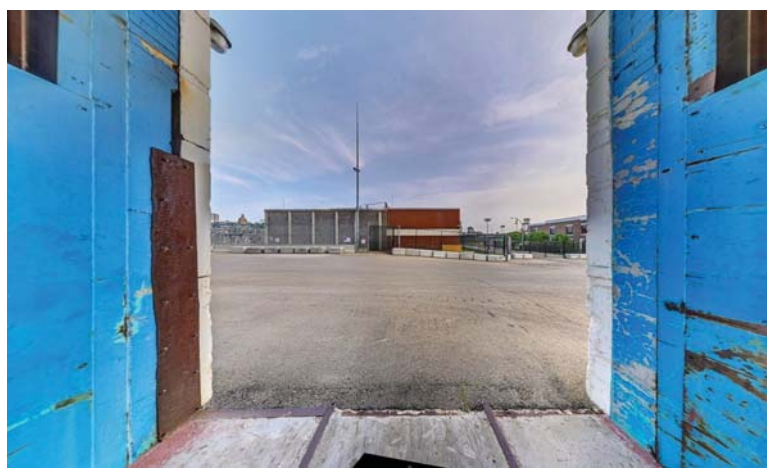
2021\_02\_18\_CoE\_ROS106\_(45).jpg



2021\_02\_18\_CoE\_ROS106\_(46).jpg



2021\_02\_18\_CoE\_ROS106\_(47).jpg



2021\_02\_18\_CoE\_ROS106\_(48).jpg





2021\_02\_18\_CoE\_ROS106\_(49).jpg



2021\_02\_18\_CoE\_ROS106\_(50).jpg



2021\_02\_18\_CoE\_ROS106\_(51).jpg



2021\_02\_18\_CoE\_ROS106\_(52).jpg



2021\_02\_18\_CoE\_ROS106\_(53).jpg



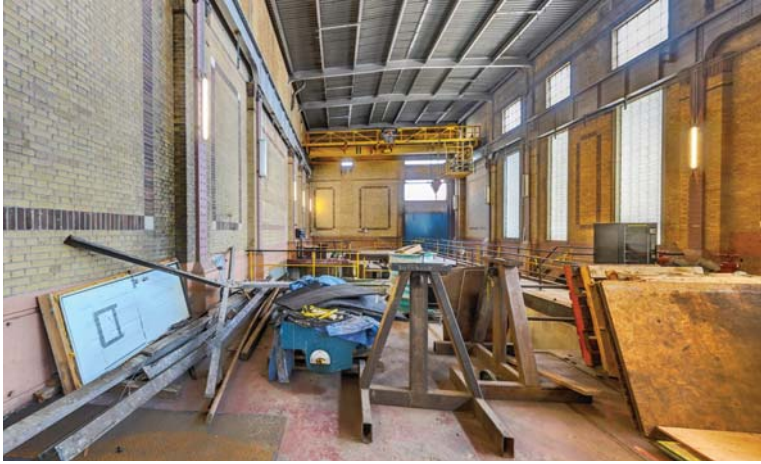
2021\_02\_18\_CoE\_ROS106\_(54).jpg



2021\_02\_18\_CoE\_ROS106\_(55).jpg



2021\_02\_18\_CoE\_ROS106\_(56).jpg



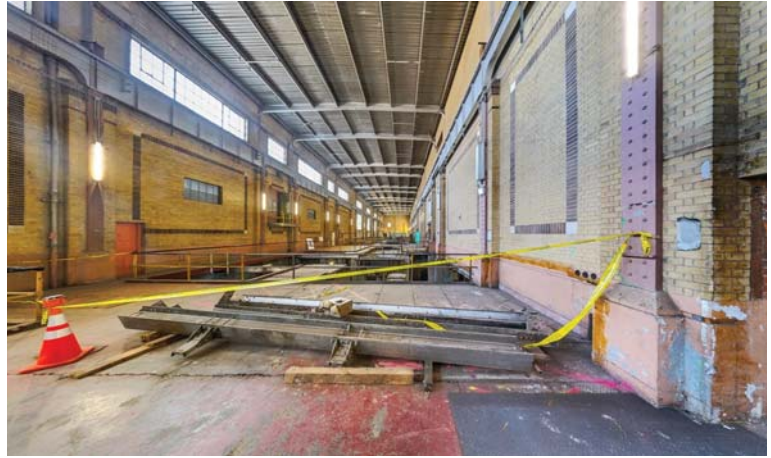
2021\_02\_18\_CoE\_ROS106\_(57).jpg



2021\_02\_18\_CoE\_ROS106\_(58).jpg



2021\_02\_18\_CoE\_ROS106\_(59).jpg



2021\_02\_18\_CoE\_ROS106\_(60).jpg



2021\_02\_18\_CoE\_ROS106\_(61).jpg



2021\_02\_18\_CoE\_ROS106\_(62).jpg



2021\_02\_18\_CoE\_ROS106\_(63).jpg



2021\_02\_18\_CoE\_ROS106\_(64).jpg



2021\_02\_18\_CoE\_ROS106\_(65).jpg



2021\_02\_18\_CoE\_ROS106\_(66).jpg



2021\_02\_18\_CoE\_ROS106\_(67).jpg



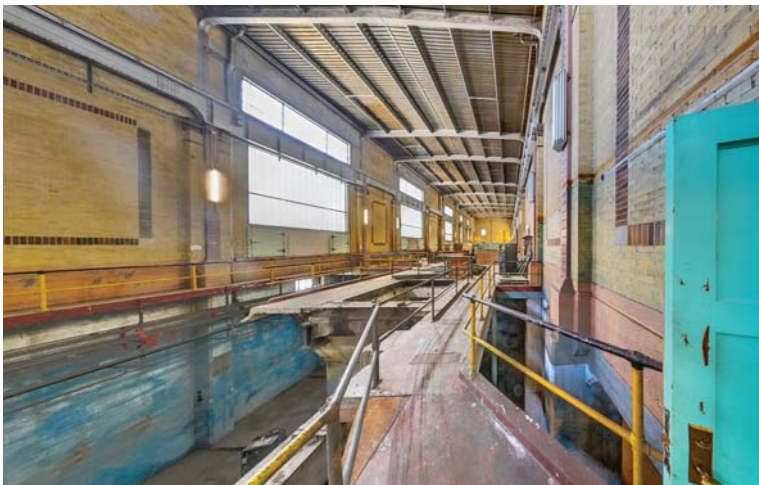
2021\_02\_18\_CoE\_ROS106\_(68).jpg



2021\_02\_18\_CoE\_ROS106\_(69).jpg



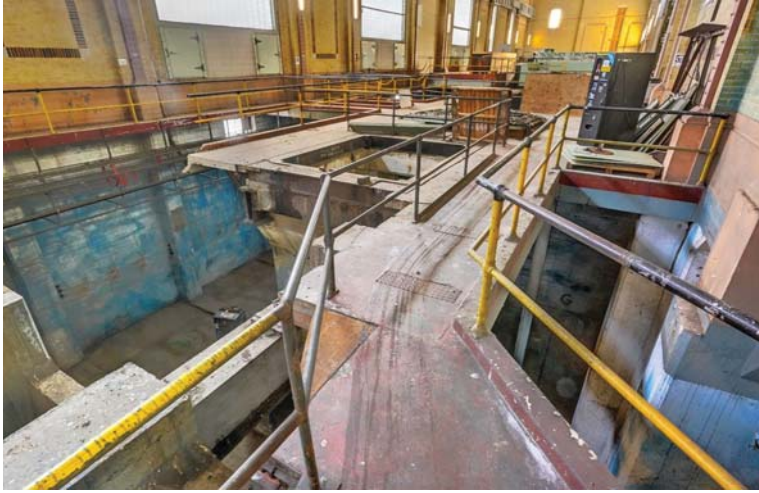
2021\_02\_18\_CoE\_ROS106\_(70).jpg



2021\_02\_18\_CoE\_ROS106\_(71).jpg



2021\_02\_18\_CoE\_ROS106\_(72).jpg



2021\_02\_18\_CoE\_ROS106\_(73).jpg



2021\_02\_18\_CoE\_ROS106\_(74).jpg



2021\_02\_18\_CoE\_ROS106\_(75).jpg



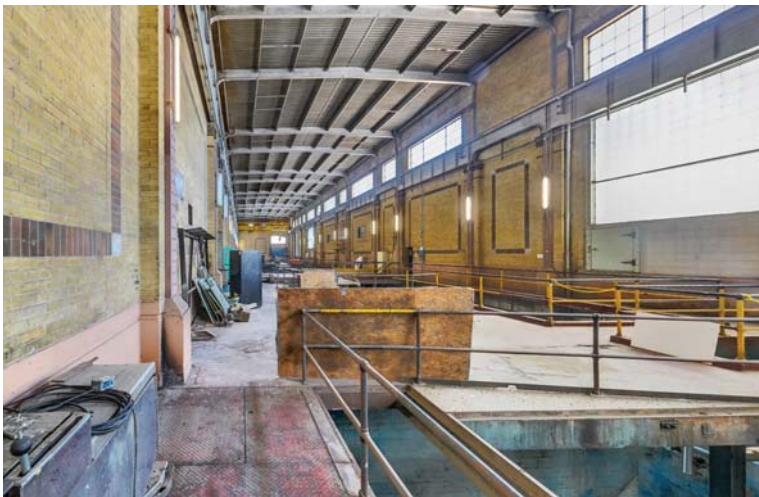
2021\_02\_18\_CoE\_ROS106\_(76).jpg



2021\_02\_18\_CoE\_ROS106\_(77).jpg



2021\_02\_18\_CoE\_ROS106\_(78).jpg



2021\_02\_18\_CoE\_ROS106\_(79).jpg



2021\_02\_18\_CoE\_ROS106\_(80).jpg





2021\_02\_18\_CoE\_ROS106\_(81).jpg



2021\_02\_18\_CoE\_ROS106\_(82).jpg



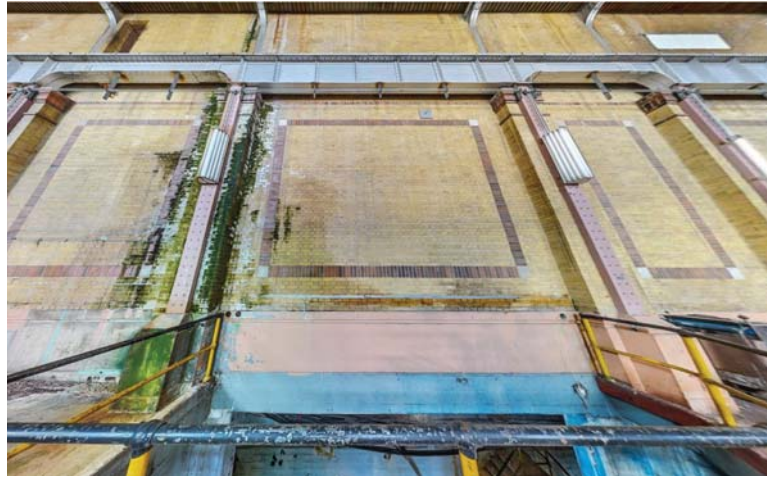
2021\_02\_18\_CoE\_ROS106\_(83).jpg



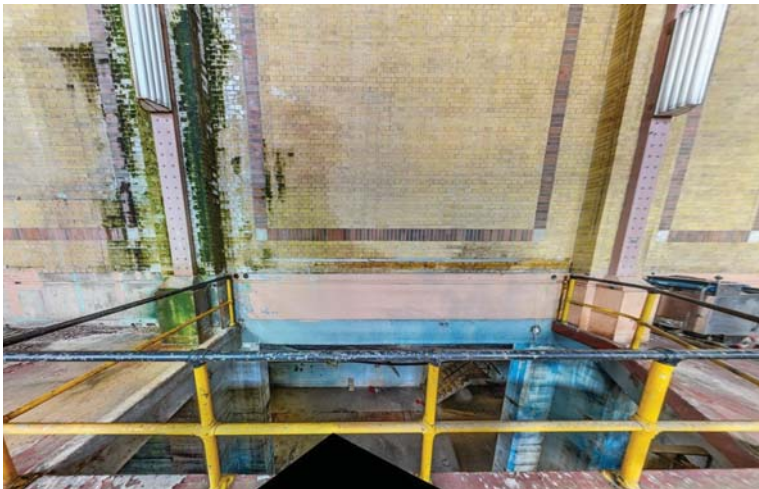
2021\_02\_18\_CoE\_ROS106\_(84).jpg



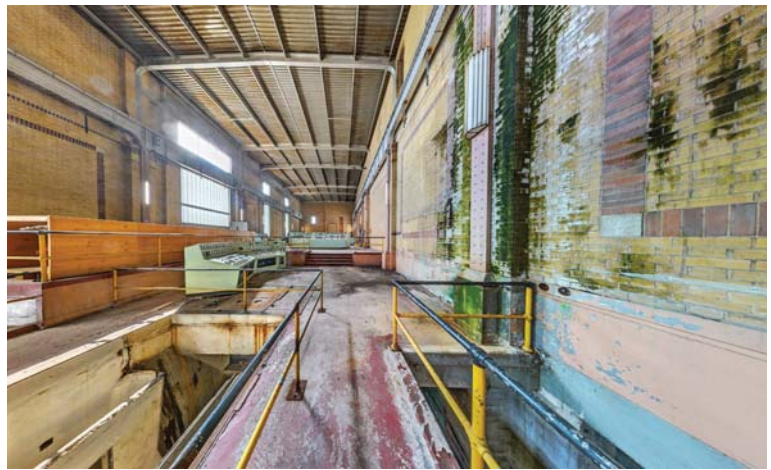
2021\_02\_18\_CoE\_ROS106\_(85).jpg



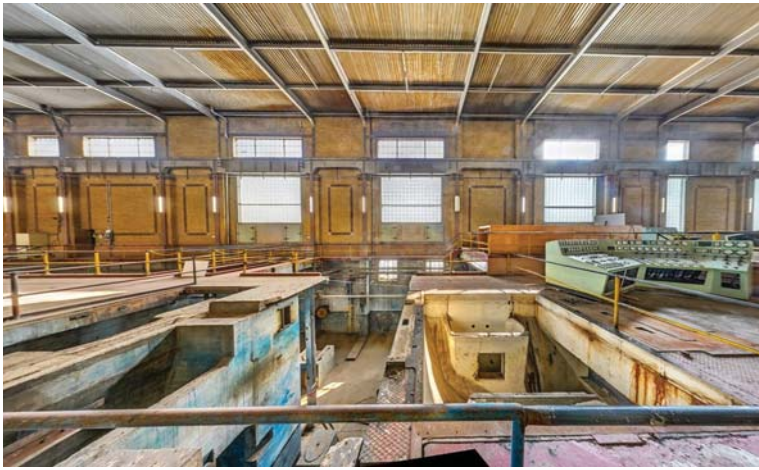
2021\_02\_18\_CoE\_ROS106\_(86).jpg



2021\_02\_18\_CoE\_ROS106\_(87).jpg



2021\_02\_18\_CoE\_ROS106\_(88).jpg



2021\_02\_18\_CoE\_ROS106\_(89).jpg



2021\_02\_18\_CoE\_ROS106\_(90).jpg



2021\_02\_18\_CoE\_ROS106\_(91).jpg



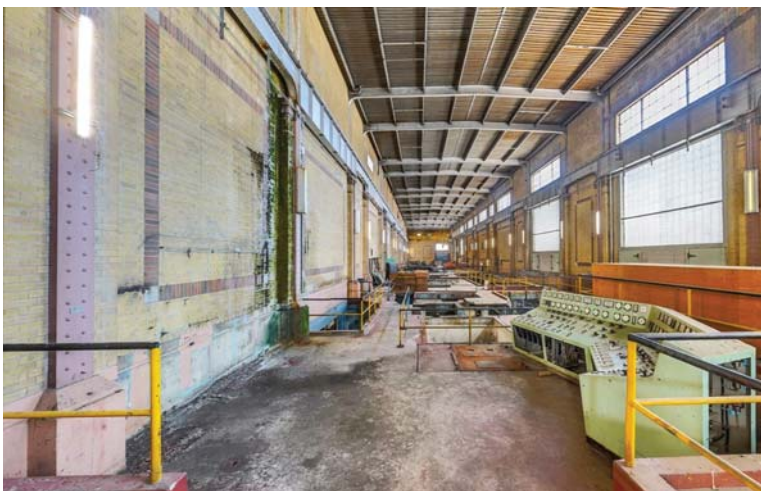
2021\_02\_18\_CoE\_ROS106\_(92).jpg



2021\_02\_18\_CoE\_ROS106\_(93).jpg



2021\_02\_18\_CoE\_ROS106\_(94).jpg



2021\_02\_18\_CoE\_ROS106\_(95).jpg



2021\_02\_18\_CoE\_ROS106\_(96).jpg



2021\_02\_18\_CoE\_ROS106\_(97).jpg



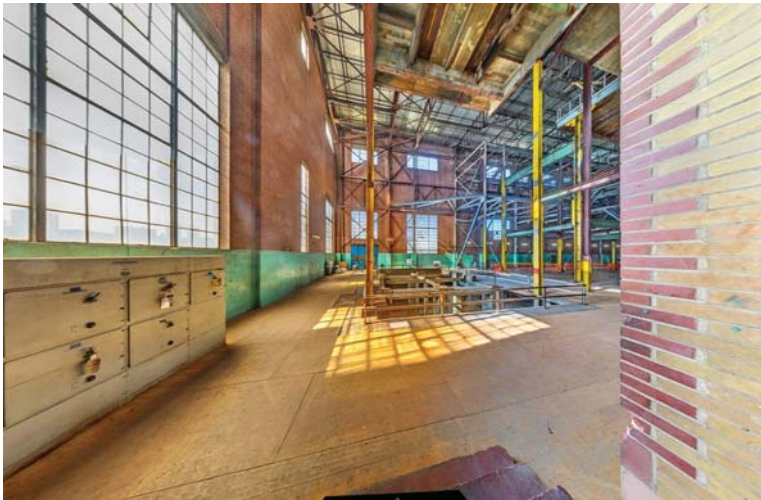
2021\_02\_18\_CoE\_ROS106\_(98).jpg



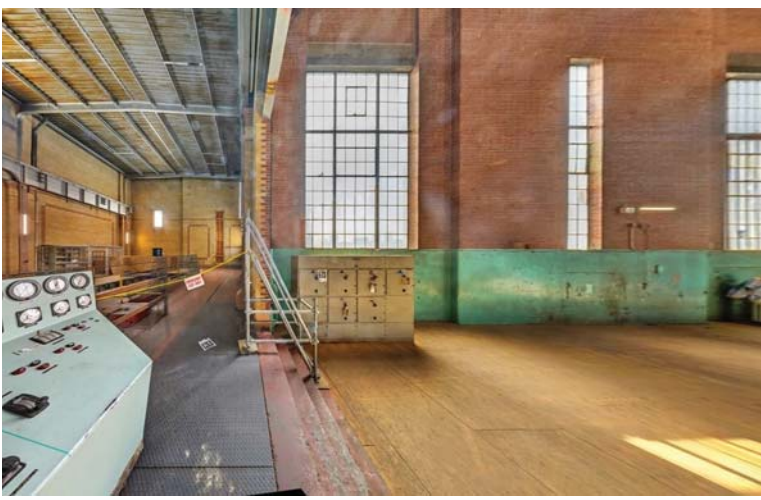
2021\_02\_18\_CoE\_ROS106\_(99).jpg



2021\_02\_18\_CoE\_ROS106\_(100).jpg



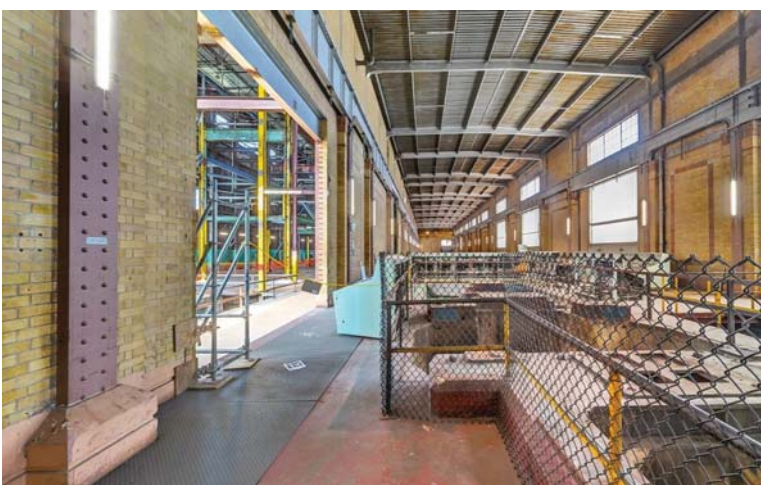
2021\_02\_18\_CoE\_ROS106\_(101).jpg



2021\_02\_18\_CoE\_ROS106\_(102).jpg



2021\_02\_18\_CoE\_ROS106\_(103).jpg



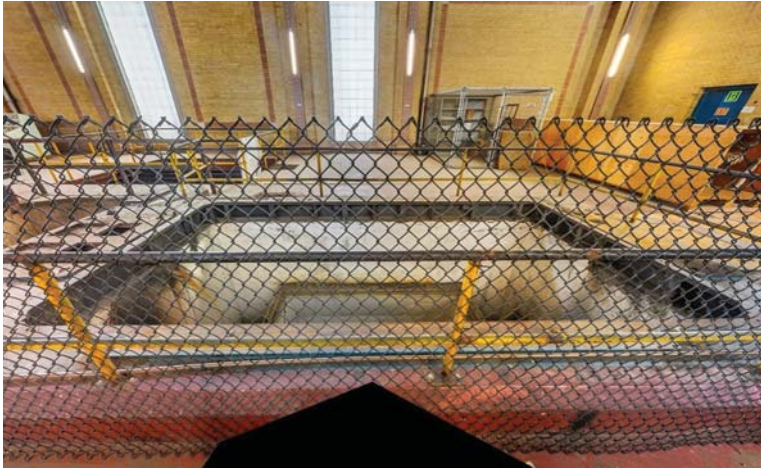
2021\_02\_18\_CoE\_ROS106\_(104).jpg



2021\_02\_18\_CoE\_ROS106\_(105).jpg



2021\_02\_18\_CoE\_ROS106\_(106).jpg



2021\_02\_18\_CoE\_ROS106\_(107).jpg



2021\_02\_18\_CoE\_ROS106\_(108).jpg



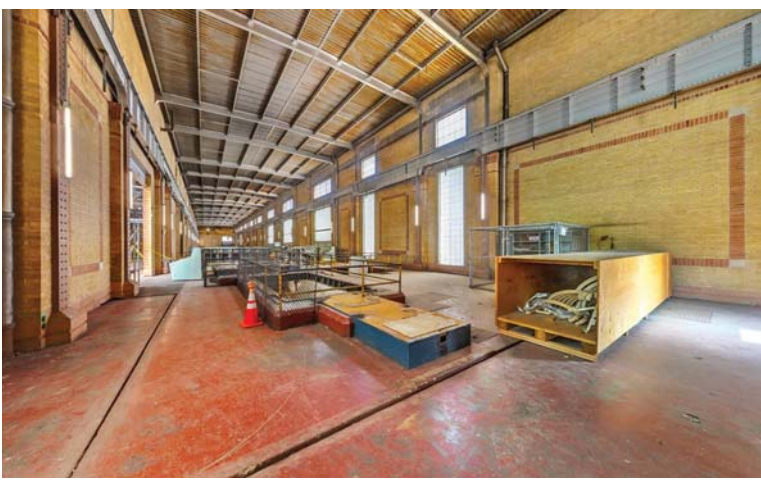
2021\_02\_18\_CoE\_ROS106\_(109).jpg



2021\_02\_18\_CoE\_ROS106\_(110).jpg



2021\_02\_18\_CoE\_ROS106\_(111).jpg



2021\_02\_18\_CoE\_ROS106\_(112).jpg

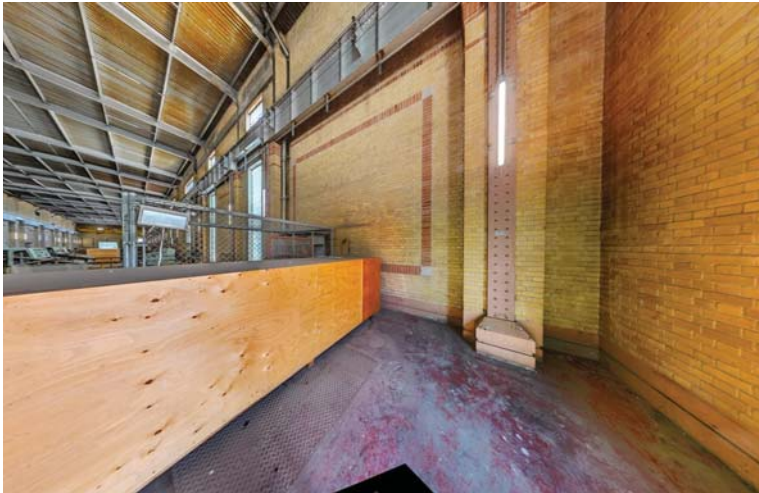




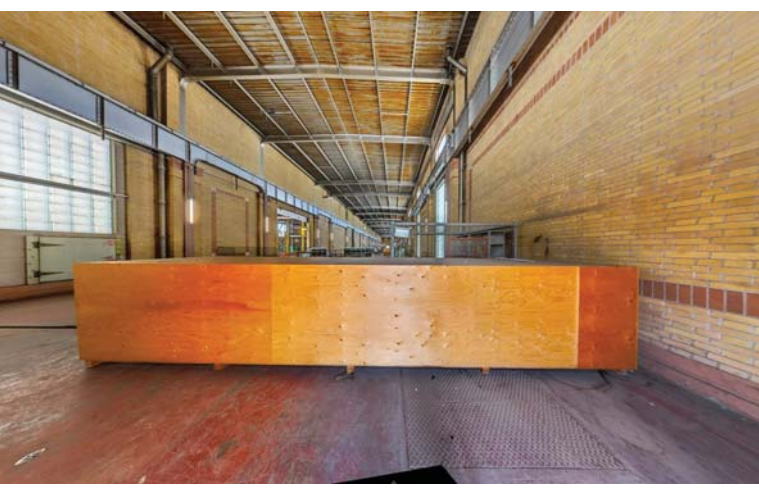
2021\_02\_18\_CoE\_ROS106\_(113).jpg



2021\_02\_18\_CoE\_ROS106\_(114).jpg



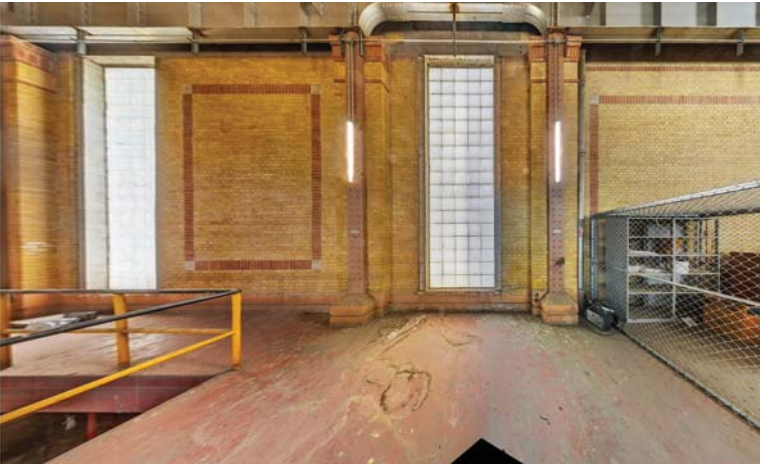
2021\_02\_18\_CoE\_ROS106\_(115).jpg



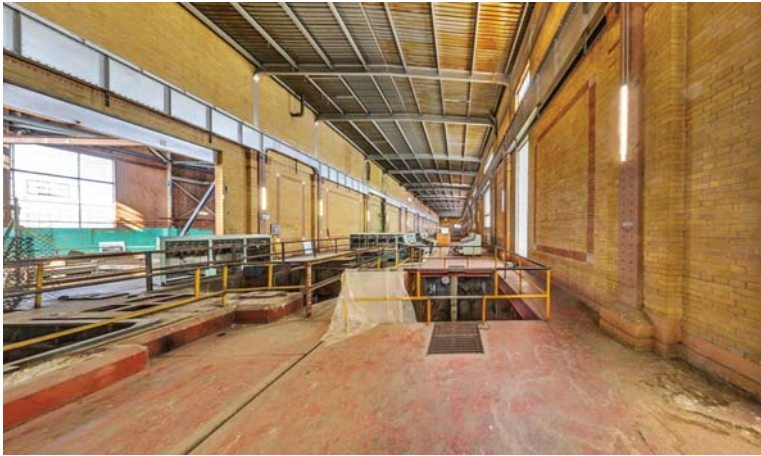
2021\_02\_18\_CoE\_ROS106\_(116).jpg



2021\_02\_18\_CoE\_ROS106\_(117).jpg



2021\_02\_18\_CoE\_ROS106\_(118).jpg



2021\_02\_18\_CoE\_ROS106\_(119).jpg



2021\_02\_18\_CoE\_ROS106\_(120).jpg



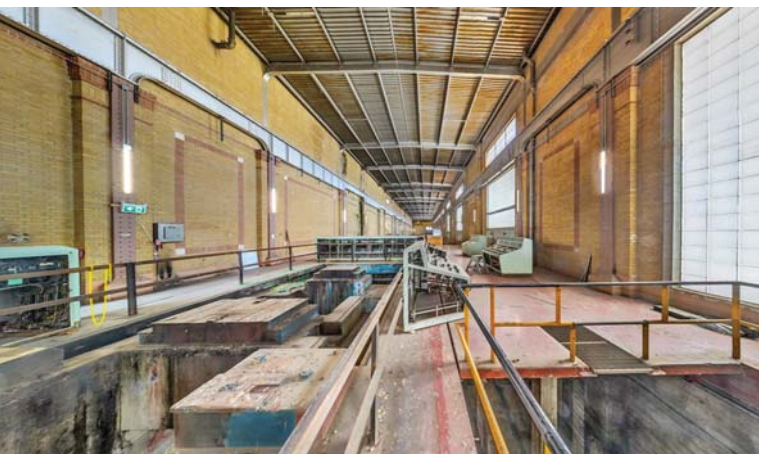
2021\_02\_18\_CoE\_ROS106\_(121).jpg



2021\_02\_18\_CoE\_ROS106\_(122).jpg



2021\_02\_18\_CoE\_ROS106\_(123).jpg



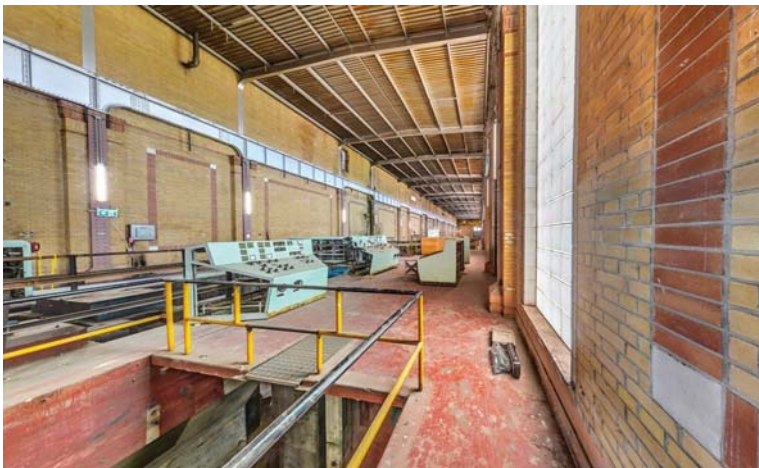
2021\_02\_18\_CoE\_ROS106\_(124).jpg



2021\_02\_18\_CoE\_ROS106\_(125).jpg



2021\_02\_18\_CoE\_ROS106\_(126).jpg



2021\_02\_18\_CoE\_ROS106\_(127).jpg



2021\_02\_18\_CoE\_ROS106\_(128).jpg



2021\_02\_18\_CoE\_ROS106\_(129).jpg



2021\_02\_18\_CoE\_ROS106\_(130).jpg



2021\_02\_18\_CoE\_ROS106\_(131).jpg



2021\_02\_18\_CoE\_ROS106\_(132).jpg



2021\_02\_18\_CoE\_ROS106\_(133).jpg



2021\_02\_18\_CoE\_ROS106\_(134).jpg



2021\_02\_18\_CoE\_ROS106\_(135).jpg



2021\_02\_18\_CoE\_ROS106\_(136).jpg



2021\_02\_18\_CoE\_ROS106\_(137).jpg



2021\_02\_18\_CoE\_ROS106\_(138).jpg



2021\_02\_18\_CoE\_ROS106\_(139).jpg



2021\_02\_18\_CoE\_ROS106\_(140).jpg



2021\_02\_18\_CoE\_ROS106\_(141).jpg



2021\_02\_18\_CoE\_ROS106\_(142).jpg

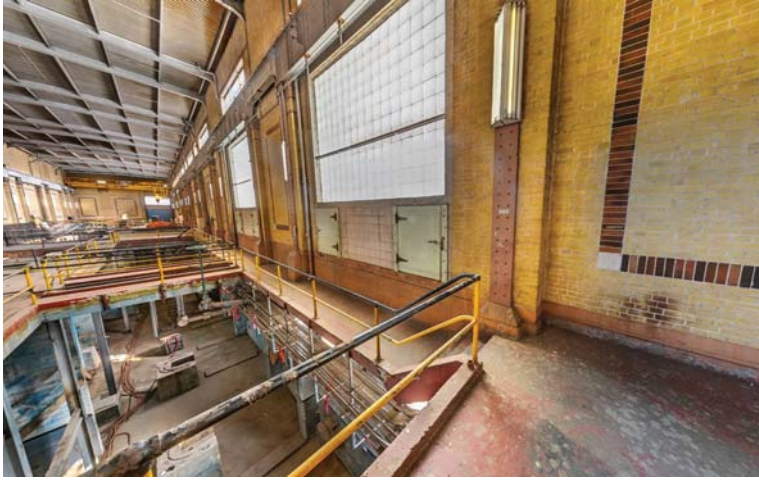


2021\_02\_18\_CoE\_ROS106\_(143).jpg

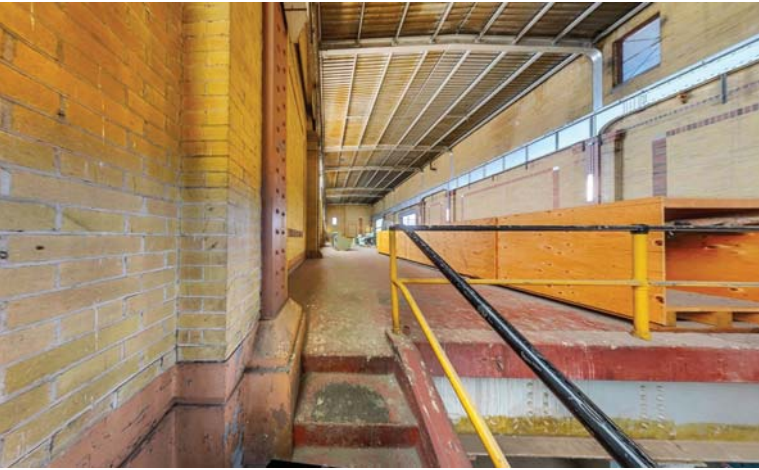


2021\_02\_18\_CoE\_ROS106\_(144).jpg





2021\_02\_18\_CoE\_ROS106\_(145).jpg



2021\_02\_18\_CoE\_ROS106\_(146).jpg



2021\_02\_18\_CoE\_ROS106\_(147).jpg



2021\_02\_18\_CoE\_ROS106\_(148).jpg



2021\_02\_18\_CoE\_ROS106\_(149).jpg



2021\_02\_18\_CoE\_ROS106\_(150).jpg



2021\_02\_18\_CoE\_ROS106\_(151).jpg



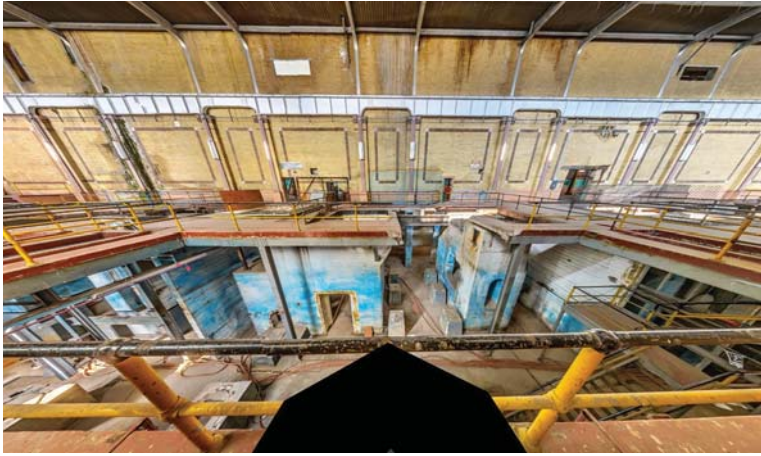
2021\_02\_18\_CoE\_ROS106\_(152).jpg



2021\_02\_18\_CoE\_ROS106\_(153).jpg



2021\_02\_18\_CoE\_ROS106\_(154).jpg



2021\_02\_18\_CoE\_ROS106\_(155).jpg



2021\_02\_18\_CoE\_ROS106\_(156).jpg



2021\_02\_18\_CoE\_ROS106\_(157).jpg



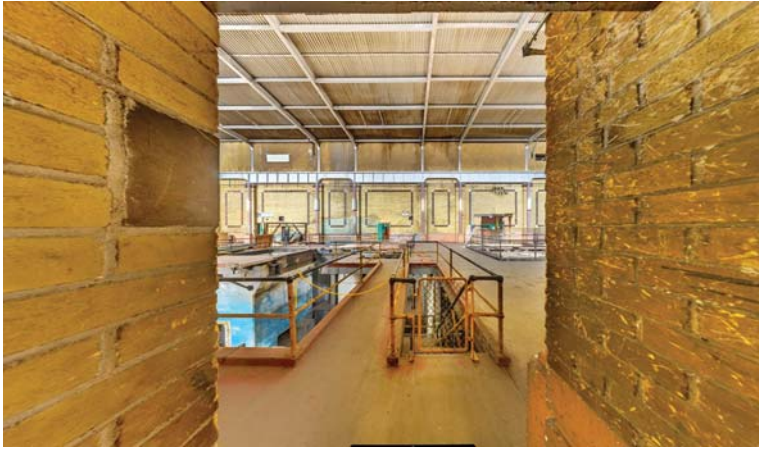
2021\_02\_18\_CoE\_ROS106\_(158).jpg



2021\_02\_18\_CoE\_ROS106\_(159).jpg



2021\_02\_18\_CoE\_ROS106\_(160).jpg



2021\_02\_18\_CoE\_ROS106\_(161).jpg



2021\_02\_18\_CoE\_ROS106\_(162).jpg



2021\_02\_18\_CoE\_ROS106\_(163).jpg



2021\_02\_18\_CoE\_ROS106\_(164).jpg



2021\_02\_18\_CoE\_ROS106\_(165).jpg



2021\_02\_18\_CoE\_ROS106\_(166).jpg



2021\_02\_18\_CoE\_ROS106\_(167).jpg



2021\_02\_18\_CoE\_ROS106\_(168).jpg



2021\_02\_18\_CoE\_ROS106\_(169).jpg



2021\_02\_18\_CoE\_ROS106\_(170).jpg



2021\_02\_18\_CoE\_ROS106\_(171).jpg



2021\_02\_18\_CoE\_ROS106\_(172).jpg



2021\_02\_18\_CoE\_ROS106\_(173).jpg



2021\_02\_18\_CoE\_ROS106\_(174).jpg



2021\_02\_18\_CoE\_ROS106\_(175).jpg

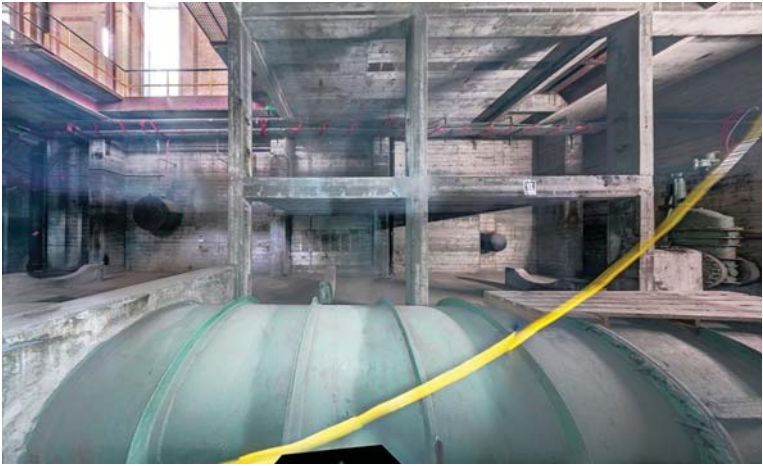


2021\_02\_18\_CoE\_ROS106\_(176).jpg





2021\_02\_18\_CoE\_ROS106\_(177).jpg



2021\_02\_18\_CoE\_ROS106\_(178).jpg



2021\_02\_18\_CoE\_ROS106\_(179).jpg



2021\_02\_18\_CoE\_ROS106\_(180).jpg



2021\_02\_18\_CoE\_ROS106\_(181).jpg



2021\_02\_18\_CoE\_ROS106\_(182).jpg



2021\_02\_18\_CoE\_ROS106\_(183).jpg



2021\_02\_18\_CoE\_ROS106\_(184).jpg



2021\_02\_18\_CoE\_ROS106\_(185).jpg



2021\_02\_18\_CoE\_ROS106\_(186).jpg



2021\_02\_18\_CoE\_ROS106\_(187).jpg



2021\_02\_18\_CoE\_ROS106\_(188).jpg



2021\_02\_18\_CoE\_ROS106\_(189).jpg



2021\_02\_18\_CoE\_ROS106\_(190).jpg



2021\_02\_18\_CoE\_ROS106\_(191).jpg



2021\_02\_18\_CoE\_ROS106\_(192).jpg



2021\_02\_18\_CoE\_ROS106\_(193).jpg



2021\_02\_18\_CoE\_ROS106\_(194).jpg



2021\_02\_18\_CoE\_ROS106\_(195).jpg



2021\_02\_18\_CoE\_ROS106\_(196).jpg



2021\_02\_18\_CoE\_ROS106\_(197).jpg



2021\_02\_18\_CoE\_ROS106\_(198).jpg



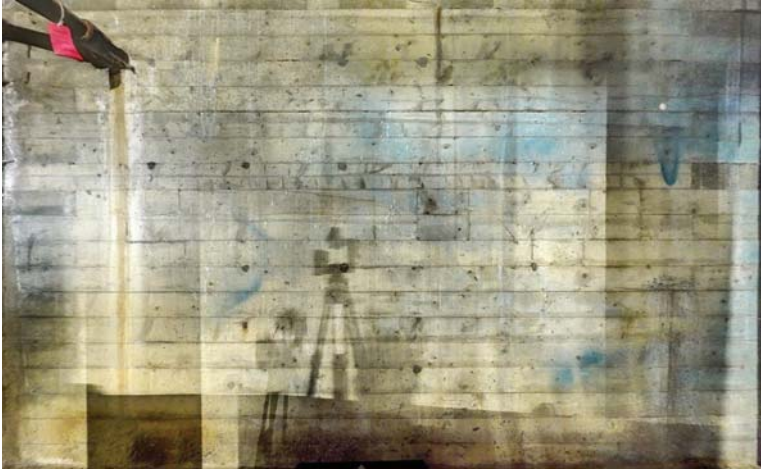
2021\_02\_18\_CoE\_ROS106\_(199).jpg



2021\_02\_18\_CoE\_ROS106\_(200).jpg



2021\_02\_18\_CoE\_ROS106\_(201).jpg



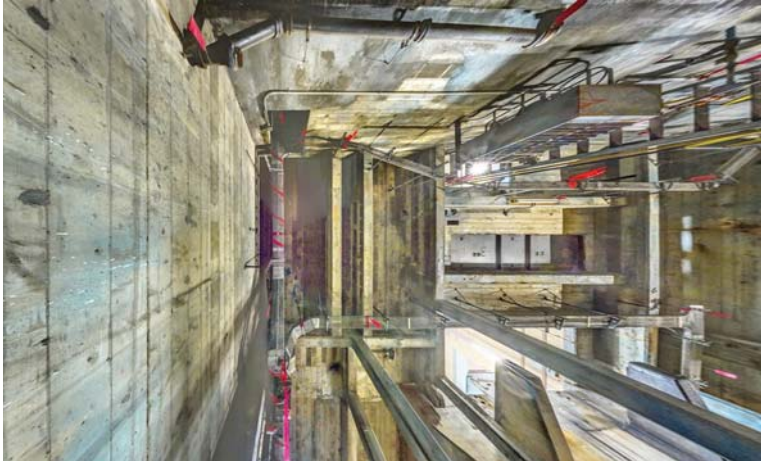
2021\_02\_18\_CoE\_ROS106\_(202).jpg



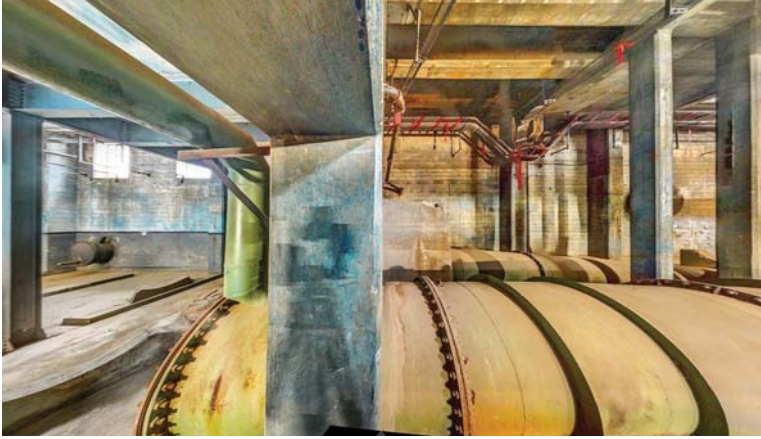
2021\_02\_18\_CoE\_ROS106\_(203).jpg



2021\_02\_18\_CoE\_ROS106\_(204).jpg



2021\_02\_18\_CoE\_ROS106\_(205).jpg



2021\_02\_18\_CoE\_ROS106\_(206).jpg



2021\_02\_18\_CoE\_ROS106\_(207).jpg



2021\_02\_18\_CoE\_ROS106\_(208).jpg





2021\_02\_18\_CoE\_ROS106\_(209).jpg



2021\_02\_18\_CoE\_ROS106\_(210).jpg



2021\_02\_18\_CoE\_ROS106\_(211).jpg



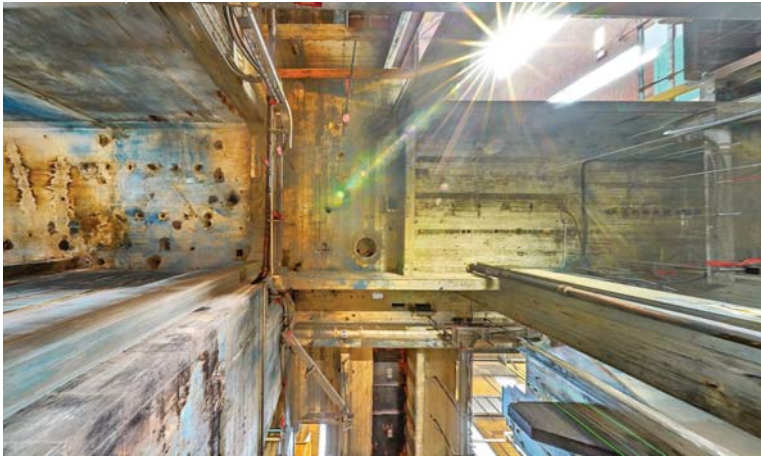
2021\_02\_18\_CoE\_ROS106\_(212).jpg



2021\_02\_18\_CoE\_ROS106\_(213).jpg



2021\_02\_18\_CoE\_ROS106\_(214).jpg



2021\_02\_18\_CoE\_ROS106\_(215).jpg



2021\_02\_18\_CoE\_ROS106\_(216).jpg



2021\_02\_18\_CoE\_ROS106\_(217).jpg



2021\_02\_18\_CoE\_ROS106\_(218).jpg



2021\_02\_18\_CoE\_ROS106\_(219).jpg



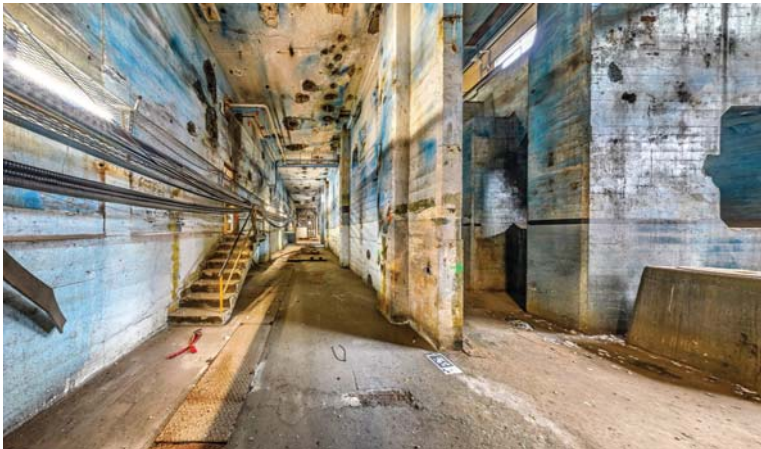
2021\_02\_18\_CoE\_ROS106\_(220).jpg



2021\_02\_18\_CoE\_ROS106\_(221).jpg



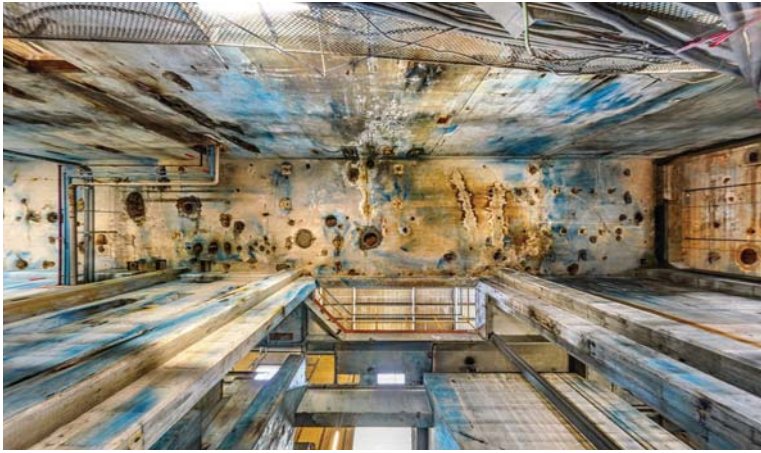
2021\_02\_18\_CoE\_ROS106\_(222).jpg



2021\_02\_18\_CoE\_ROS106\_(223).jpg



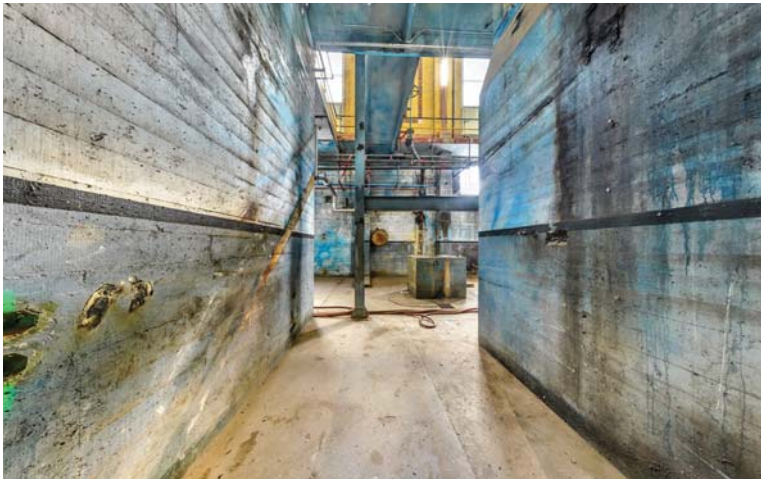
2021\_02\_18\_CoE\_ROS106\_(224).jpg



2021\_02\_18\_CoE\_ROS106\_(225).jpg



2021\_02\_18\_CoE\_ROS106\_(226).jpg



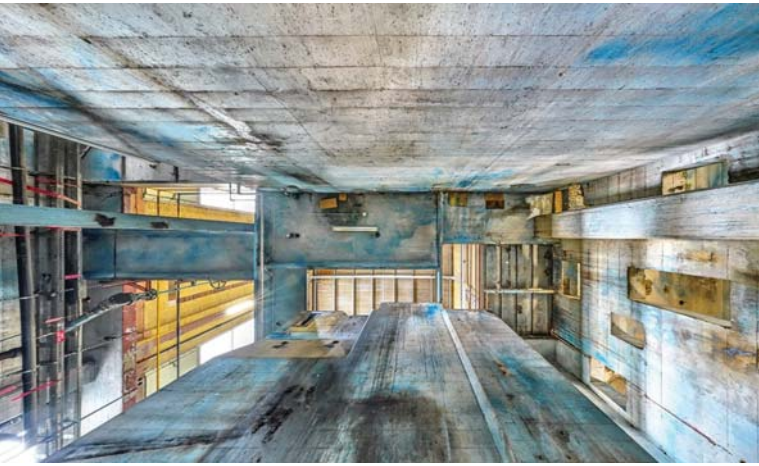
2021\_02\_18\_CoE\_ROS106\_(227).jpg



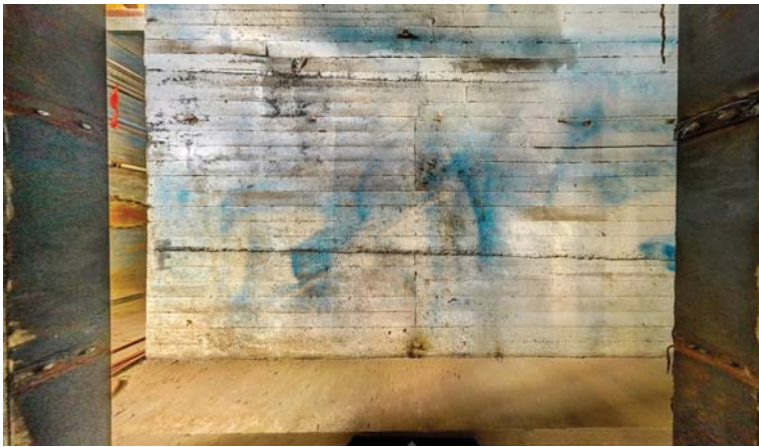
2021\_02\_18\_CoE\_ROS106\_(228).jpg



2021\_02\_18\_CoE\_ROS106\_(229).jpg



2021\_02\_18\_CoE\_ROS106\_(230).jpg



2021\_02\_18\_CoE\_ROS106\_(231).jpg



2021\_02\_18\_CoE\_ROS106\_(232).jpg



2021\_02\_18\_CoE\_ROS106\_(233).jpg



2021\_02\_18\_CoE\_ROS106\_(234).jpg



2021\_02\_18\_CoE\_ROS106\_(235).jpg



2021\_02\_18\_CoE\_ROS106\_(236).jpg



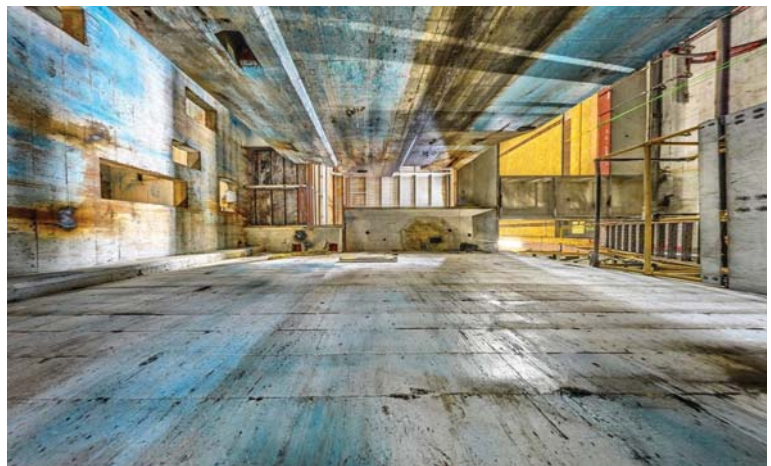
2021\_02\_18\_CoE\_ROS106\_(237).jpg



2021\_02\_18\_CoE\_ROS106\_(238).jpg



2021\_02\_18\_CoE\_ROS106\_(239).jpg

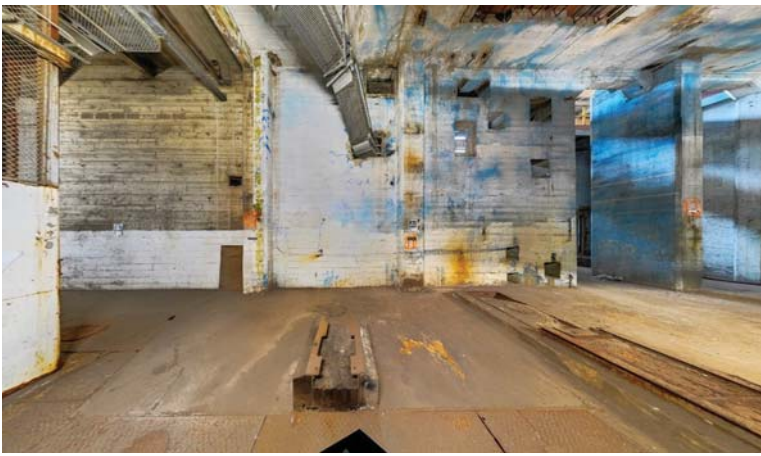


2021\_02\_18\_CoE\_ROS106\_(240).jpg

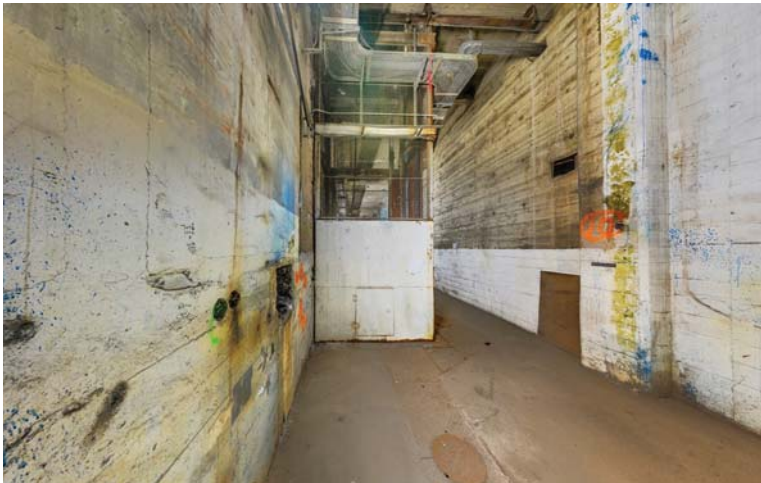




2021\_02\_18\_CoE\_ROS106\_(241).jpg



2021\_02\_18\_CoE\_ROS106\_(242).jpg



2021\_02\_18\_CoE\_ROS106\_(243).jpg



2021\_02\_18\_CoE\_ROS106\_(244).jpg



2021\_02\_18\_CoE\_ROS106\_(245).jpg



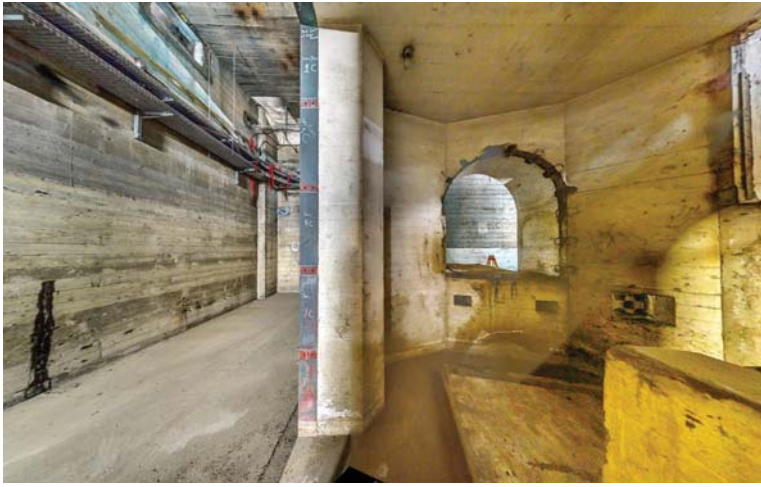
2021\_02\_18\_CoE\_ROS106\_(246).jpg



2021\_02\_18\_CoE\_ROS106\_(247).jpg



2021\_02\_18\_CoE\_ROS106\_(248).jpg



2021\_02\_18\_CoE\_ROS106\_(249).jpg



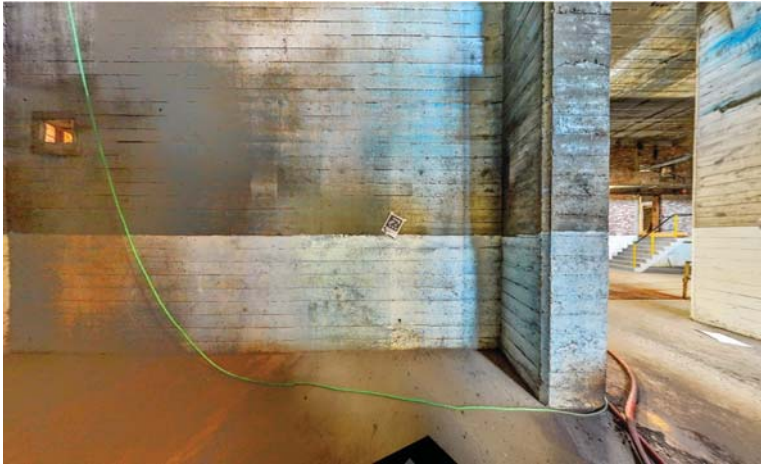
2021\_02\_18\_CoE\_ROS106\_(250).jpg



2021\_02\_18\_CoE\_ROS106\_(251).jpg



2021\_02\_18\_CoE\_ROS106\_(252).jpg



2021\_02\_18\_CoE\_ROS106\_(253).jpg



2021\_02\_18\_CoE\_ROS106\_(254).jpg



2021\_02\_18\_CoE\_ROS106\_(255).jpg



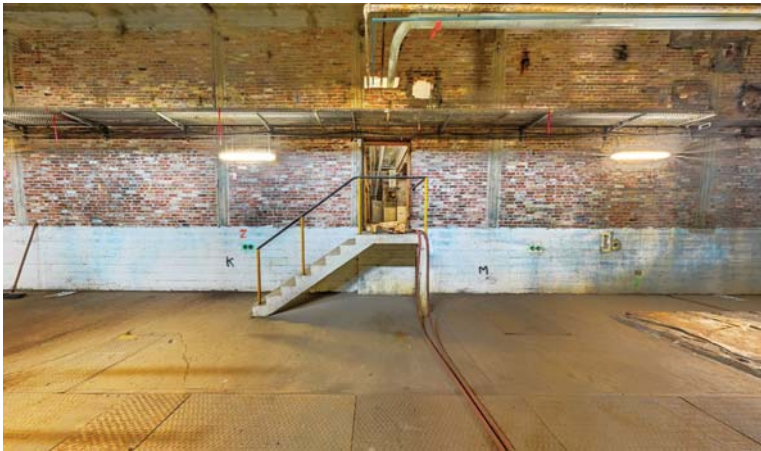
2021\_02\_18\_CoE\_ROS106\_(256).jpg



2021\_02\_18\_CoE\_ROS106\_(257).jpg



2021\_02\_18\_CoE\_ROS106\_(258).jpg



2021\_02\_18\_CoE\_ROS106\_(259).jpg



2021\_02\_18\_CoE\_ROS106\_(260).jpg



2021\_02\_18\_CoE\_ROS106\_(261).jpg



2021\_02\_18\_CoE\_ROS106\_(262).jpg



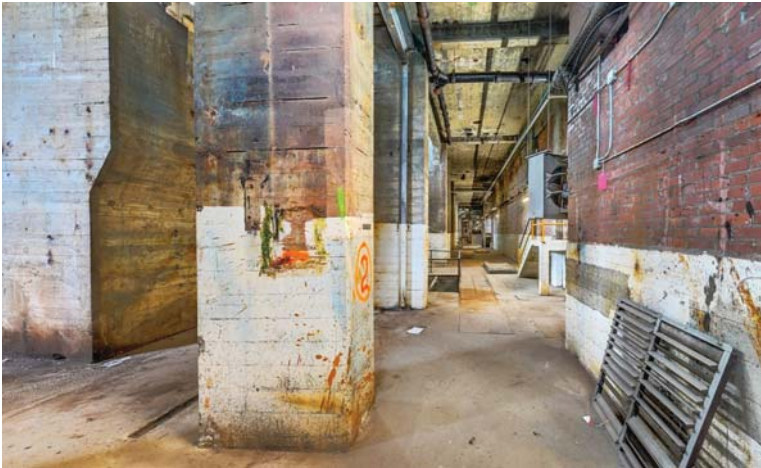
2021\_02\_18\_CoE\_ROS106\_(263).jpg



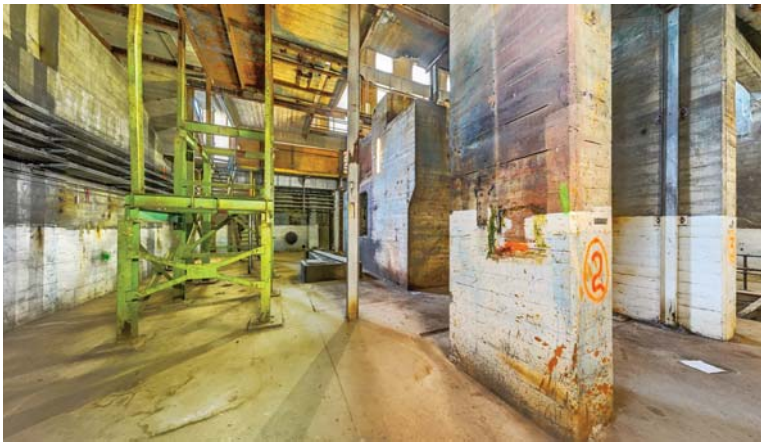
2021\_02\_18\_CoE\_ROS106\_(264).jpg



2021\_02\_18\_CoE\_ROS106\_(265).jpg



2021\_02\_18\_CoE\_ROS106\_(266).jpg



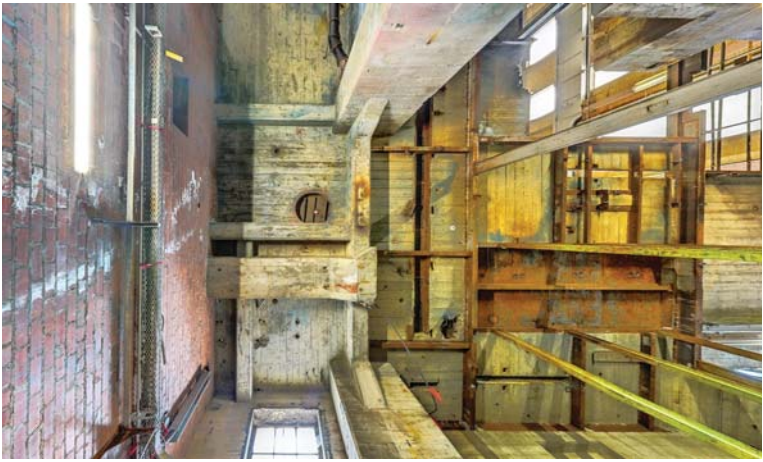
2021\_02\_18\_CoE\_ROS106\_(267).jpg



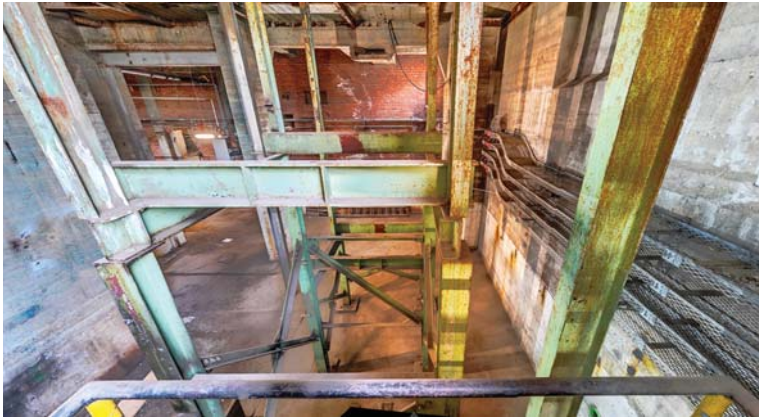
2021\_02\_18\_CoE\_ROS106\_(268).jpg



2021\_02\_18\_CoE\_ROS106\_(269).jpg



2021\_02\_18\_CoE\_ROS106\_(270).jpg



2021\_02\_18\_CoE\_ROS106\_(271).jpg

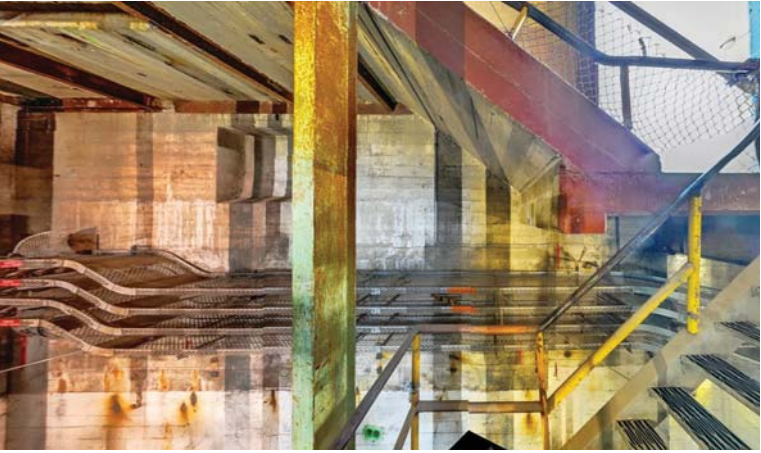


2021\_02\_18\_CoE\_ROS106\_(272).jpg

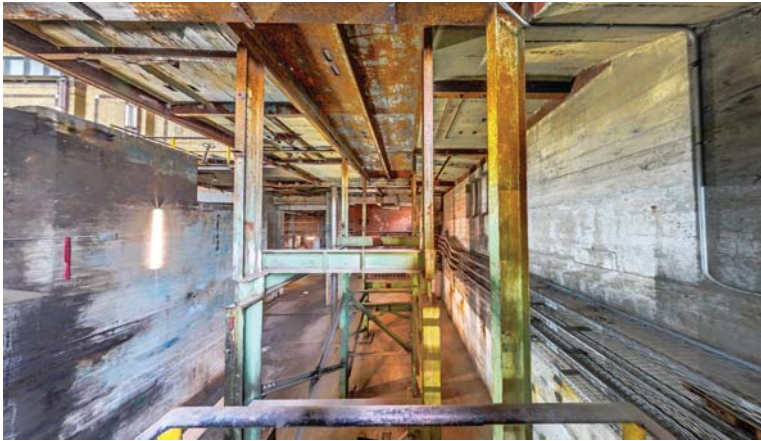




2021\_02\_18\_CoE\_ROS106\_(273).jpg



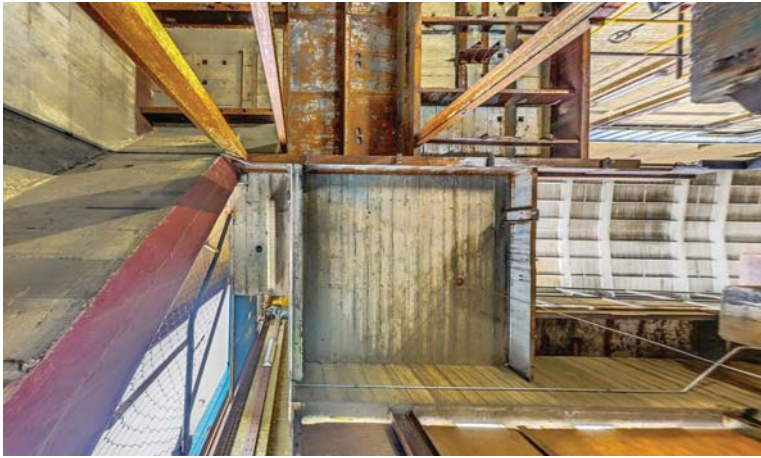
2021\_02\_18\_CoE\_ROS106\_(274).jpg



2021\_02\_18\_CoE\_ROS106\_(275).jpg



2021\_02\_18\_CoE\_ROS106\_(276).jpg



2021\_02\_18\_CoE\_ROS106\_(277).jpg