



JOHN MCNEILL RESIDENCE

11217 - 97 STREET NW

CITY OF EDMONTON HISTORIC RESOURCE MANAGEMENT PROGRAM

Edmonton

DESCRIPTION OF HISTORICAL PLACE

The John McNeill Residence is a large, two and one-half storey, two-tone brick building with intersecting gables and offset front porch and balcony. Built on a city lot in the mature Alberta Avenue neighbourhood and fronting onto 97th Street, it is located on one of the principal access routes to Edmonton's downtown. Important for its association with John McNeill, a prominent Edmonton entrepreneur, the John McNeill Residence is notable for its Victorian design influences.



HERITAGE VALUE

The house, built circa 1907, is significant for its association with one of Edmonton's most successful transportation entrepreneurs, John McNeill, who lived in the house from 1910 to 1914. Shortly after arriving from Scotland in 1910, John McNeill bought a small company called Twin City Transfer and, typical of the entrepreneurial spirit of the times, successfully expanded the business to become the largest transportation company in Alberta. In addition to busses and his involvement with the first airstrip, he established the first taxi business in Edmonton, Twin City Taxi, in 1912 and Edmonton's first private ambulance service.

An eclectic style with Victorian/Queen Anne influences, the McNeill house is significant for its notable combination of architectural elements, such as the use of colourful orange and buff brick to differentiate between architectural detail and main walls, the hip roof with intersecting gables, the covered porch and balcony, and the roof level widows walk.

CHARACTER DEFINING ELEMENTS

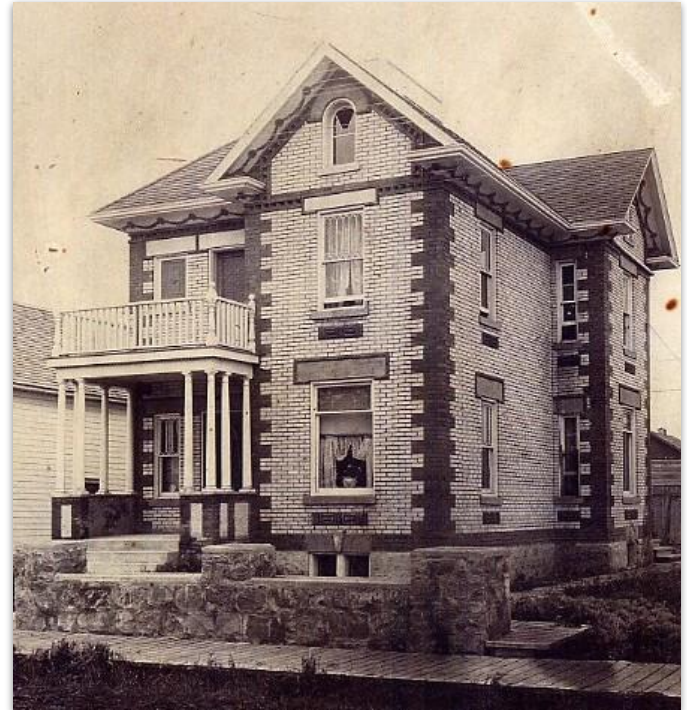
The eclectic Victorian inspired design of the John McNeill Residence are expressed through character defining elements such as:

- + the form, massing, and materials;
- + the hip roof with cross gables and gable extensions with return eaves and widows walk;
- + the orange and buff brick with coloured mortar joints;





- + the timber front door;
- + the timber porch with classical columns set on brick pedestals supporting the balcony above;
- + the orange brick detailing such as quoins at the exterior wall edges, cogging details at the eave and gable, brick banding at the stone foundation and eave, voussoirs in the roman arch roof windows, and brick hood-moulds around parged lintels;
- + the parged lintels and projecting sills;
- + the fenestration patterns and window styles such as the stained and leaded glass windows and the half diamond mullion pattern windows on the front (west) and south façades, the Roman arched windows in the gable, the split windows with flat arch; and keystone in the basement;
- + decorative elements such as the decorative orange brick pattern below each window and the frieze with rosettes linked by a festoon of circular disks applied to the soffit;
- + the stone rubble foundation; and
- + the brick chimney at the rear.



Designated as a Municipal Historic Resource through Bylaw 13827 in February 2005.

Visit edmonton.ca/historicresources to learn more

