

# 215 Street Arterial Road Upgrades

---

## About the Project

215 Street NW from Edgemont Boulevard to Edgemont Green will transform the existing rural roadway into a modern urban arterial road structure designed to meet current transportation standards and future community needs. Urban arterial roads provide essential connectivity between residential areas, commercial districts, and major transportation networks while accommodating multiple modes of travel including vehicles, transit, pedestrians, and cyclists. This infrastructure investment will deliver lasting benefits including improved road surface quality, enhanced drainage to reduce flooding, safer pedestrian crossings with upgraded sidewalks and accessibility ramps, better traffic flow management through optimized signal timing and intersection design, and reduced long-term maintenance costs. The upgraded roadway will support community growth and provide reliable transportation infrastructure for decades to come.

This project is led and funded by multiple developers (Brookfield Residential, Anthem Properties & Rohit Communities) on behalf of the City of Edmonton. Infrastructure improvements under this project include the upgrade of the roadway to an urban arterial road structure. The project will involve full-depth reclamation, roadway reconstruction, and installation of modern infrastructure including improved drainage systems, sidewalks, and traffic control features.

## Road Closures Details

215 Street NW (Winterburn Road) between Maskekoshik Trail and 45 Ave NW, road closure will be in effect from March 31, 2026 to February 2027.

Closure Detail	Information
Location	215 Street NW between Maskekoshik Trail and 45 Ave NW
Closure Start Date	March 31, 2026
Closure End Date	February 28, 2027
Duration	11 months
Hours Affected	24 hours per day, 7 days per week
Access Arrangements	Local traffic access maintained to properties through approved detour plan

# 215 Street Arterial Road Upgrades

---

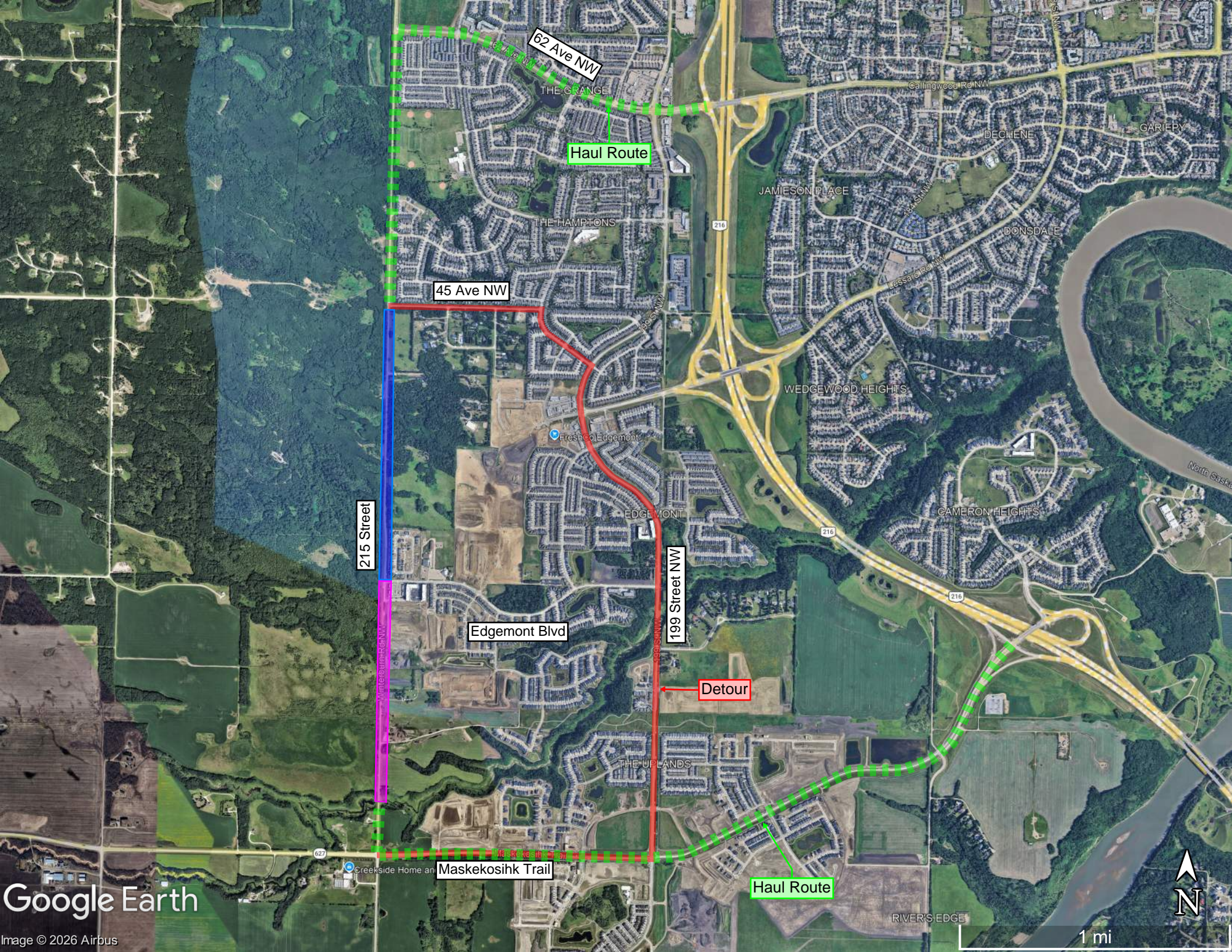
## Detour Information

During the closure period, motorists will need to use designated detour routes to navigate around the construction zone. Clear detour signage will be installed in advance of the closure to guide drivers along approved alternate routes. Residents are advised to add extra travel time to their daily commutes and plan accordingly. Emergency vehicle access will be maintained at all times through coordination with local fire, police, and ambulance services. Detour routes will be clearly marked with standard detour signs displaying directional arrows at key decision points.

Please see the **temporary road closure and detour information map** enclosed.

## Contact Information

Brookfield Residential	Email: <a href="mailto:developmentinquiries@brookfieldrp.com">developmentinquiries@brookfieldrp.com</a> Phone: (780)423-1910
Anthem Properties	Email: <a href="mailto:edmonton@anthemproperties.com">edmonton@anthemproperties.com</a> Phone: (780)421-7272
Rohit Communities	Email: <a href="mailto:lot.sales@rohitgroup.com">lot.sales@rohitgroup.com</a>



62 Ave NW

Haul Route

45 Ave NW

215 Street

Edgemont Blvd

199 Street NW

Detour

Maskekosihk Trail

Haul Route

