

City of Edmonton **Yellowhead Trail Freeway Conversion Program**

66 Street Intersection Final Concept: Partial Interchange – 66 Street Flyover

October 2019

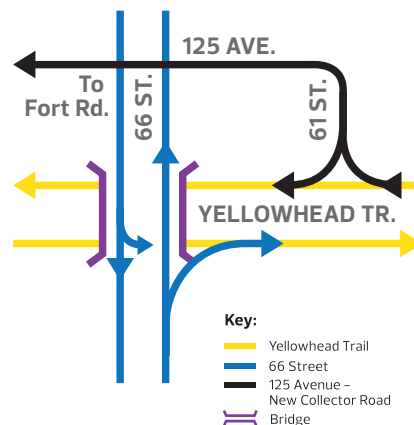
Edmonton

Thank you for participating in our engagement process over the past year. We are now sharing the **final concept** for what will be built at Yellowhead Trail and 66 Street.

Multiple options for the intersection and the surrounding road network were considered by our technical team over the past year. A short list of three design options were selected for further study and evaluation, and were shared for public input in June 2019 to help determine the final concept.

The outcome of the study is a concept plan for a partial interchange with a flyover (overpass) at 66 Street constructed with a combination of slopes and retaining walls. It includes access from 66 Street to Yellowhead Trail eastbound using a new ramp. The new 61 Street / 125 Avenue connection will provide Yellowhead Trail westbound access.

This plan maintains the north-south connection for motorists, as well as a shared-use path on the west side for those who walk or cycle. This was presented as Option 2B in June 2019.



Let's Talk!

We are now at the final stage of engagement for the concept planning study. Minor modifications, which may include some changes to business accesses, will be considered from this point forward.

View the plan online or in person and tell us what you think.

Drop-in Public Engagement Sessions

Wednesday, October 23, 2019
4 – 8 p.m.

Jerry Forbes Centre for
Community Spirit, 12122 – 68 Street

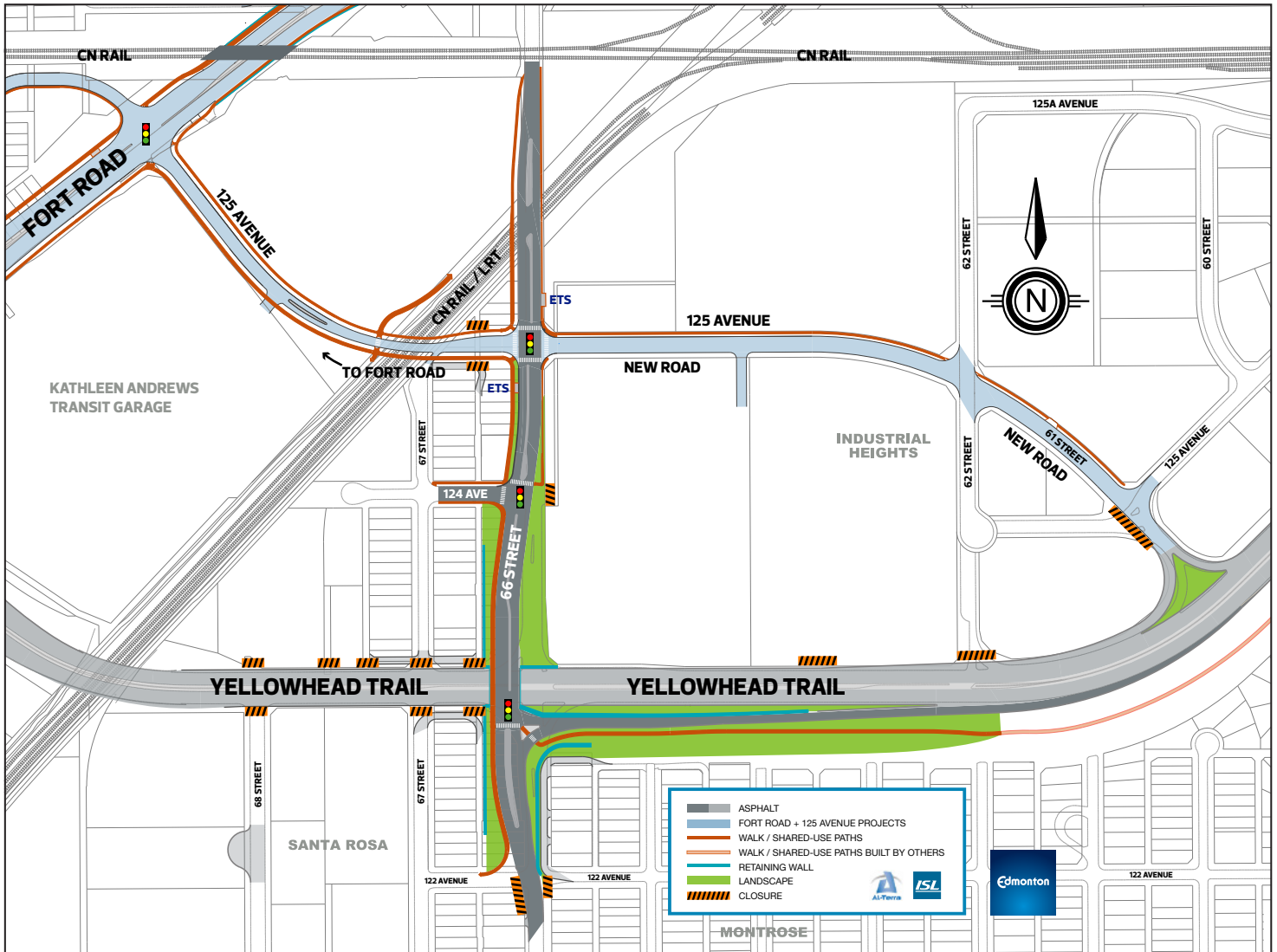
Saturday, October 26, 2019
10 a.m. – 1 p.m.

Balwin School, 7055 – 132 Avenue

Online until November 2:
edmonton.ca/Yellowhead82to50Street

Partial Interchange – 66 Street Flyover: Highlights

- Maintains north-south connection across Yellowhead Trail on 66 Street
- Constructed using both retaining walls and landscaped slopes to minimize cost and visual impact
- Provides access to Yellowhead Trail eastbound from both 66 Street northbound and southbound via new ramp
- Provides westbound access onto and off of Yellowhead Trail at the new 61 Street/125 Avenue collector road
- Includes closure of all streets, alleys and driveways along Yellowhead Trail between 68 Street and 62 Street
- Includes closure of 122 Avenue both east and west at 66 Street
- Provides new shared-use path along the west side of 66 Street for pedestrian and cycle connections across Yellowhead Trail
- Requires changes to some area business accesses
- Requires some private property along 66 Street



Concept Phase Public Engagement Summary

We know the Yellowhead Trail Freeway Conversion Project will change the way you travel and the way you do business so thank you for getting involved!

Your input provided valuable views and perspectives for us to consider during the concept development process.

Phase 1: Listen and Learn

- We met with area residents, commercial businesses and property owners, and community organizations to discuss and understand the impact of the planned removal of the traffic signals at Yellowhead Trail and 66 Street.
- We conducted technical studies and used your input to consider design options.

Phase 2: Configuration Options and Evaluation

- We presented three design options for the future roadway network and invited you to help us refine them.
- We conducted further studies on each option, considered public input and evaluated options to determine a final concept plan.

Phase 3: Final Concept Plan (**We are here!**)

- We are sharing the final concept plan for the intersection of Yellowhead Trail and 66 Street.
- We want to know what you think of the final concept plan.

What We Heard in Phase 1 and Phase 2:

Your input, along with technical studies (traffic analysis, feasibility, cost, safety, etc.) and City policy, helped influence the final concept plan.

WHAT WE HEARD	WHAT WE DID
<ul style="list-style-type: none"> • A north-south connection across 66 Street is important for all modes of travel 	<ul style="list-style-type: none"> • A north-south 66 Street connection is provided for all modes of travel
<ul style="list-style-type: none"> • The existing roadway network is thought to be at maximum capacity during peak travel times; rerouted traffic from closed intersections will worsen existing congestion issues 	<ul style="list-style-type: none"> • A north-south connection will have minimal impacts on the broader roadway network congestion
<ul style="list-style-type: none"> • Shortcutting through neighbourhoods may increase 	<ul style="list-style-type: none"> • Eastbound exits onto Yellowhead Trail help mitigate concerns relating to community shortcutting
<ul style="list-style-type: none"> • Uncertainty about future routes for heavy trucks and dangerous goods vehicles to access / exit the project area 	<ul style="list-style-type: none"> • A transportation route for heavy trucks and dangerous goods is provided via a 66 Street north-south connection, an eastbound Yellowhead Trail access off of 66 Street and a westbound Yellowhead Trail access at the new 61 Street / 125 Avenue collector road
<ul style="list-style-type: none"> • The communities of Montrose, Newton and the Santa Rosa area (located south of Yellowhead Trail) may become isolated 	<ul style="list-style-type: none"> • A north-south connection, as well as an eastbound connection onto Yellowhead Trail help mitigate concerns related to community isolation
<ul style="list-style-type: none"> • Respondents tend to support options that are lower cost and have less negative visual impacts 	<ul style="list-style-type: none"> • Construction using retaining walls and slopes is a lower cost option with less visual impacts than using only retaining walls

View our public engagement reports online at edmonton.ca/Yellowhead82to50Street

What Happens Next

Where we are today



PROJECT STAGE	DEFINITION	TIMELINE
Concept Plan	Develop a plan for what will be built and what it will look like, including changes to the broader roadway network.	2019
Preliminary Design	Develop the concept plan in more detail. Prepare schedule and budget.	2020
Detailed Design	Refine the preliminary design and prepare plans and specifications that can be used to guide construction and ensure that changes are built to standards.	2021
Construction	Build the plan.	2024-2025

Yellowhead Trail Freeway Conversion Program

In 2011, the City of Edmonton completed the Yellowhead Trail Strategic Plan, showing the final elements necessary to convert Yellowhead Trail into a freeway. For Yellowhead Trail, becoming a freeway means no traffic signals, three lanes of free-flowing traffic in each direction, and an 80 km/h target speed limit.

Visit www.edmonton.ca/yellowheadtrail for more information on the Yellowhead Trail Freeway Conversion Program.

For more information

And to sign up for email updates:

Online: edmonton.ca/Yellowhead82to50street

Email: yellowhead@edmonton.ca

Call: 311

SHARE YOUR VOICE
SHAPE OUR CITY

Edmonton