

Traffic Calming in Central McDougall

As part of earlier public engagement, we heard interest in improving pedestrian safety and addressing speeding and shortcutting.

To do this, the City uses traffic calming measures, such as raised crosswalks and curb extensions, to improve safety for people who drive, walk, and bike.

They aim to:

- Help to reduce motor vehicle speeds on residential roadways
- Enhance safety for people crossing neighbourhood roadways
- Encourage safe behaviour by all road users

A curb extension extends the sidewalk into the parking lane to narrow the roadway and provide additional pedestrian space at key locations either at the corners of a street or mid-block.

Curb extensions enhance pedestrian safety by increasing pedestrian visibility, shortening crossing distances, slowing turning vehicles, and narrowing the roadway.

A raised crosswalk is a marked pedestrian crosswalk which is constructed higher than the roadway surface. This is intended to slow traffic and increase pedestrian safety.



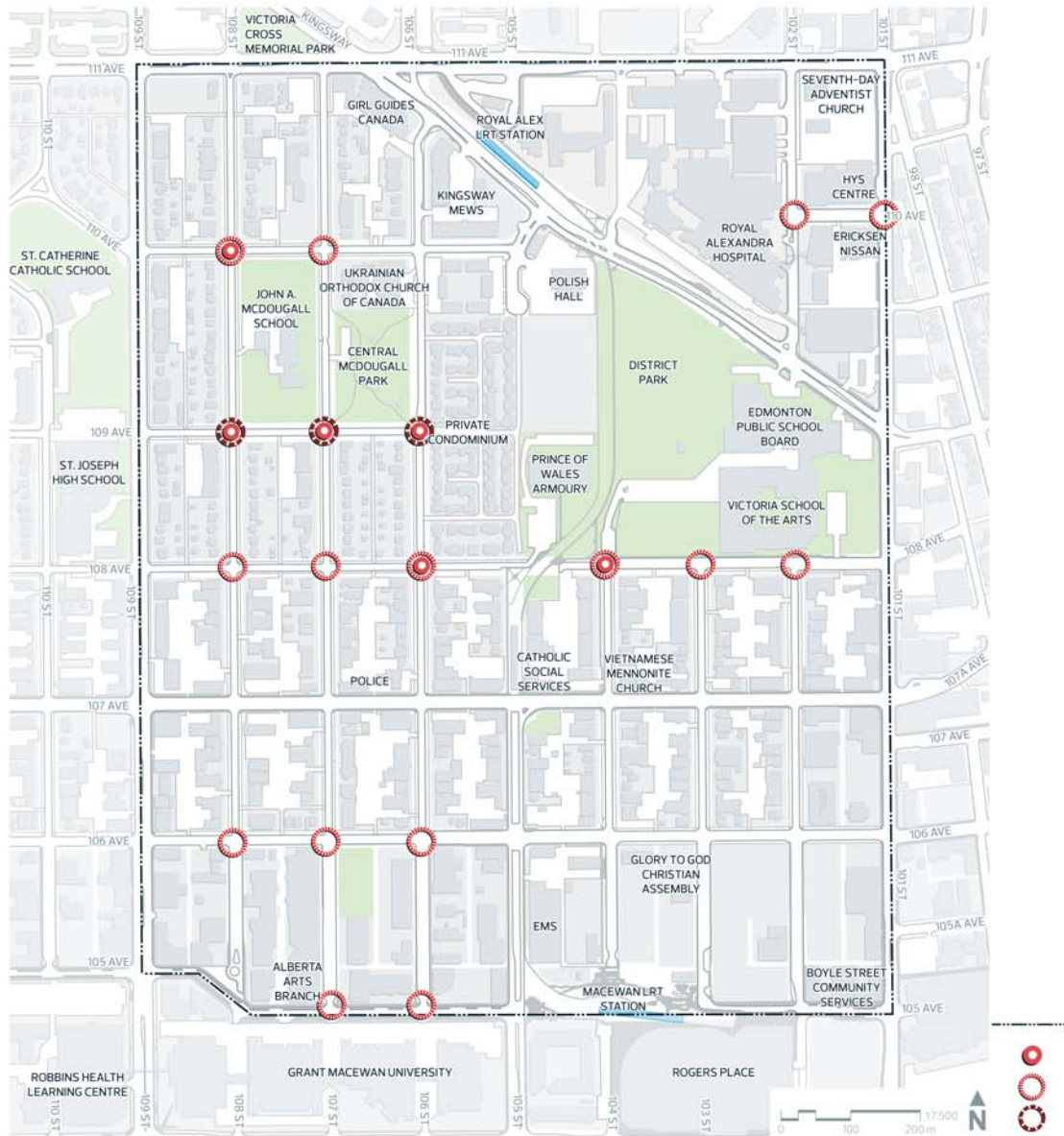
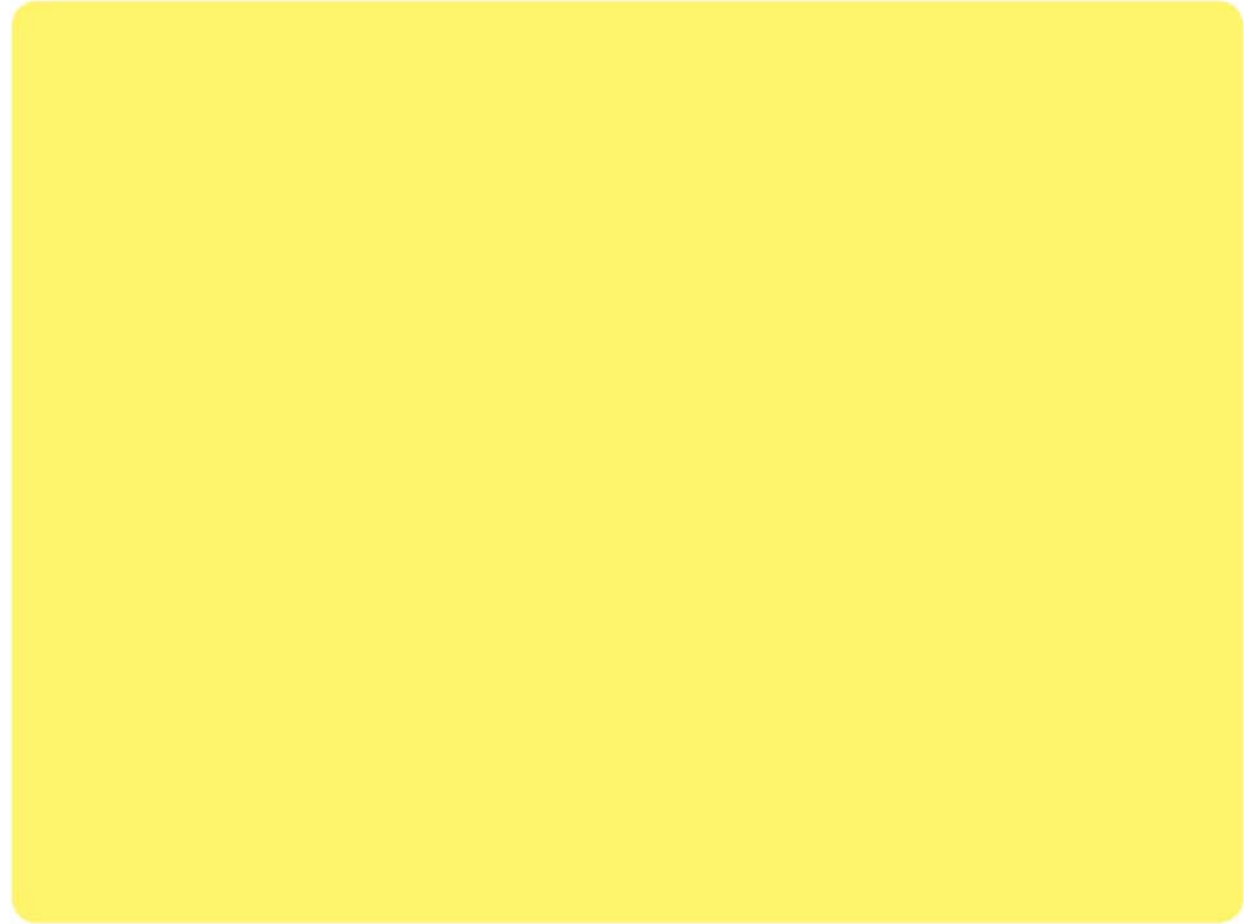
*Preliminary – subject to funding and approval

SHARE YOUR VOICE
SHAPE OUR CITY

Edmonton

Traffic Calming in Central McDougall

Please use a sticky note to tell us anything else that we should consider before proceeding with traffic calming measures.



- Central McDougall
- Existing Curb Extensions
- Proposed Curb Extensions
- Proposed Raised Crosswalks

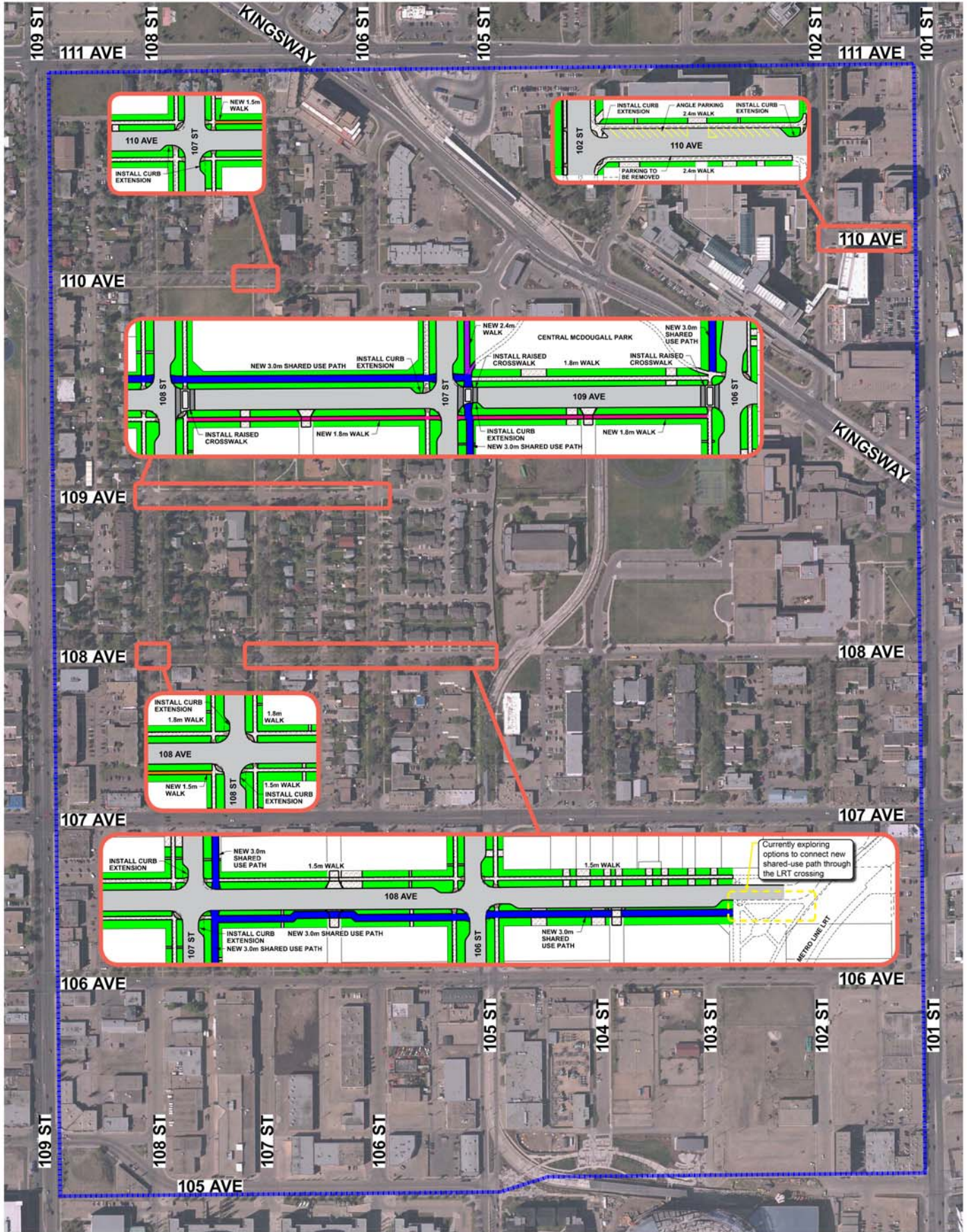
*Preliminary – subject to funding and approval

SHARE YOUR VOICE
SHAPE OUR CITY





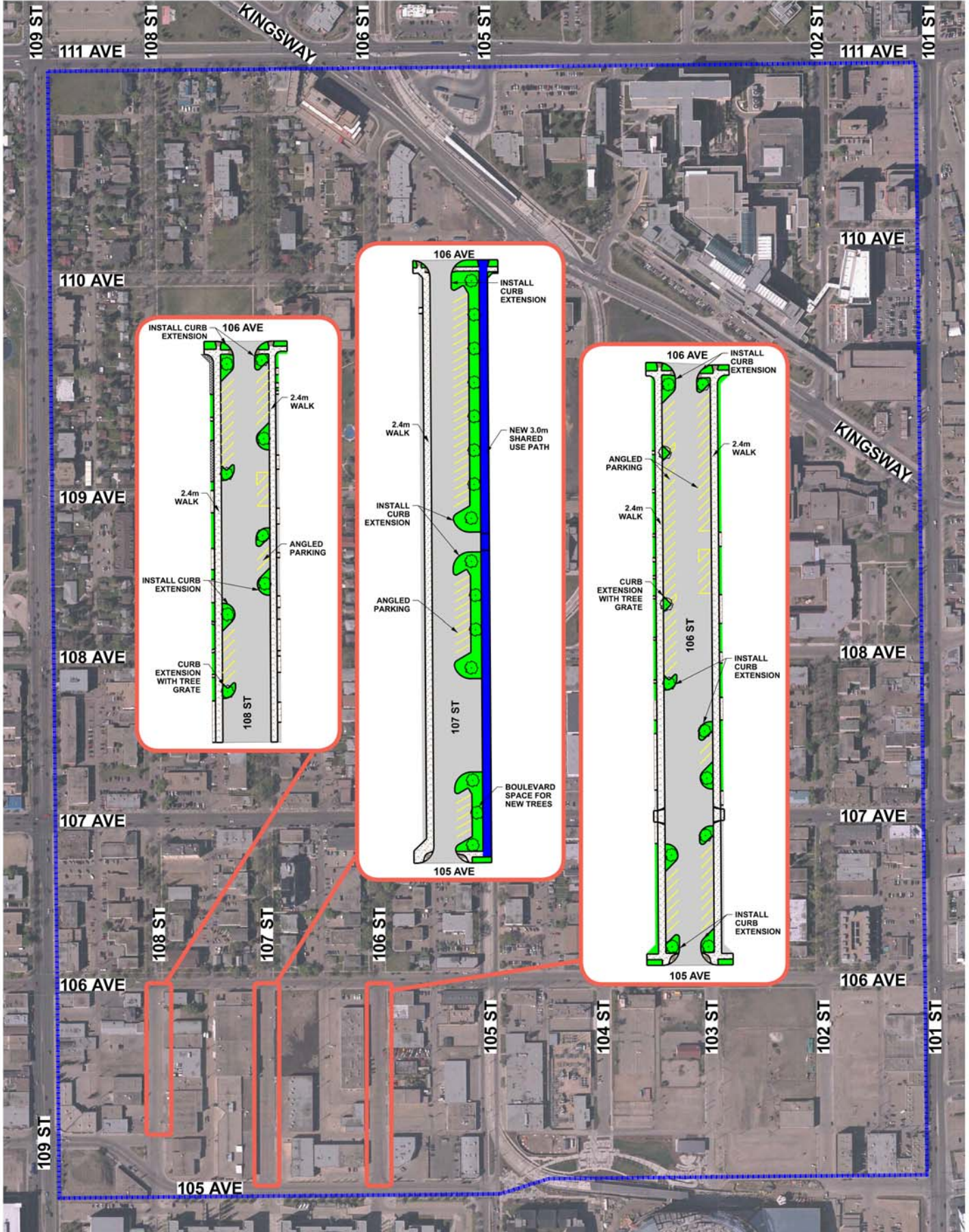
Central McDougall Residential Street Modifications



*Preliminary – subject to funding and approval



Central McDougall Commercial Street Modifications



*Preliminary – subject to funding and approval