

# Residential Street Renewal

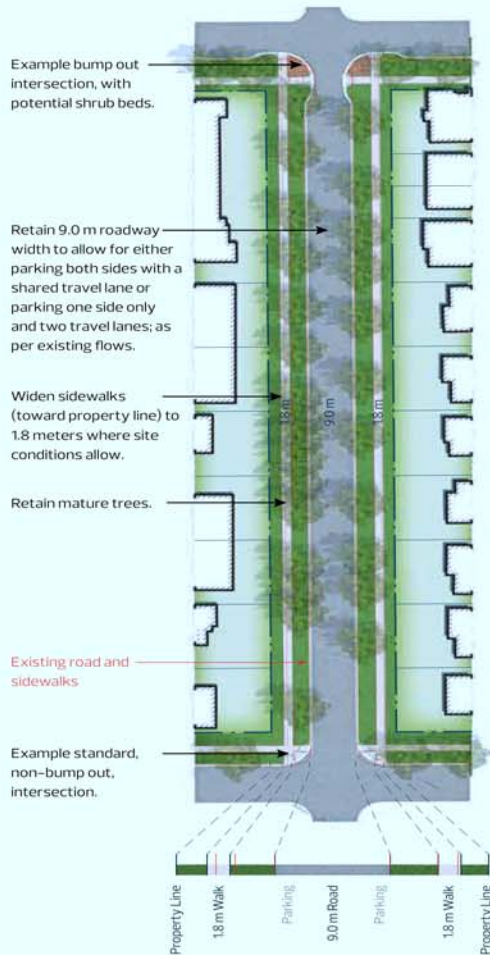
In September, we presented three options for residential streets.

Each option introduced ideas to accommodate different types of traffic calming, parking, wider sidewalks, and, where needed, bicycle routes.

The people who provided feedback on the options told us:

- Keeping as much parking as possible is critical for residents
- Maintaining road widths is important, especially for buses and large vehicles who access the neighbourhood
- Wider sidewalks are important to support mobility and a walkable neighbourhood; however, mature trees must be protected when these sidewalks are upgraded
- Pedestrian safety is important and should be accommodated using curb extensions and raised crosswalks
- There is comfort experiencing curb extensions and raised crosswalks in all the locations proposed
- It is important that people who bike are separated from vehicles

# Residential Street Renewal



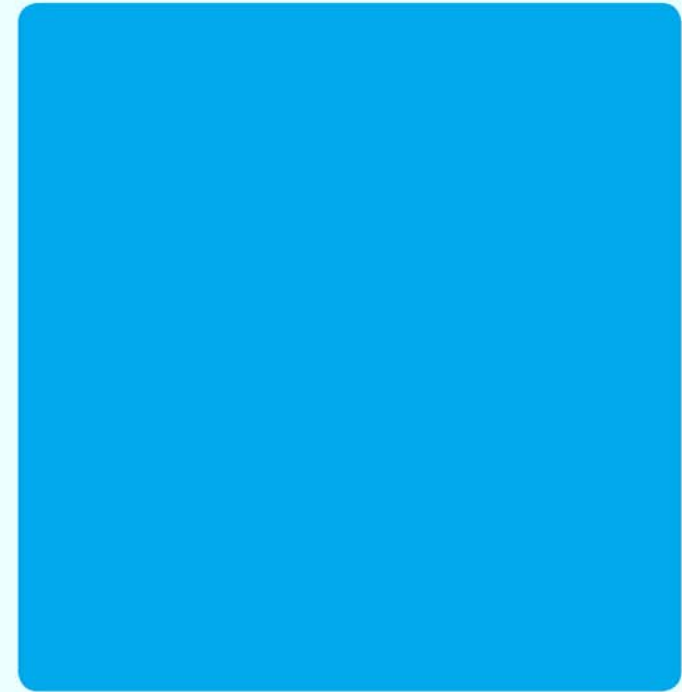
Renewal along Residential Streets will include:

- Curb Extensions at some intersections (Please see “Traffic Calming in Central McDougall” display board for specific locations)
- Wider sidewalks, where existing infrastructure, street grade, and mature trees make it possible
- Parking on both sides of the street
- Space to add landscaping within the new curb extensions



\*Preliminary – subject to funding and approval

Is there anything else we should consider before proceeding with the residential street preliminary design? Please use a sticky note to provide any comments.

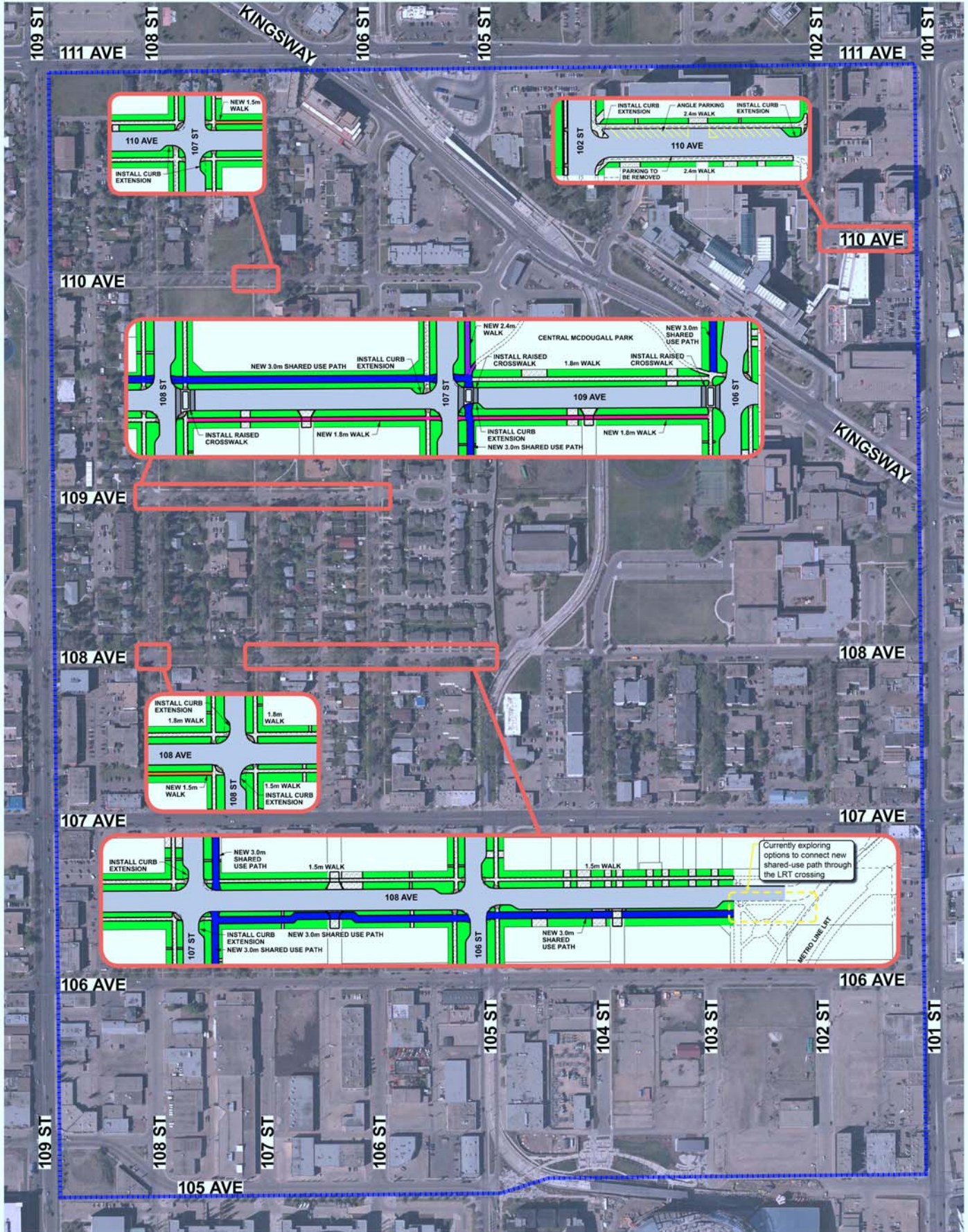


SHARE YOUR VOICE  
SHAPE OUR CITY

Edmonton

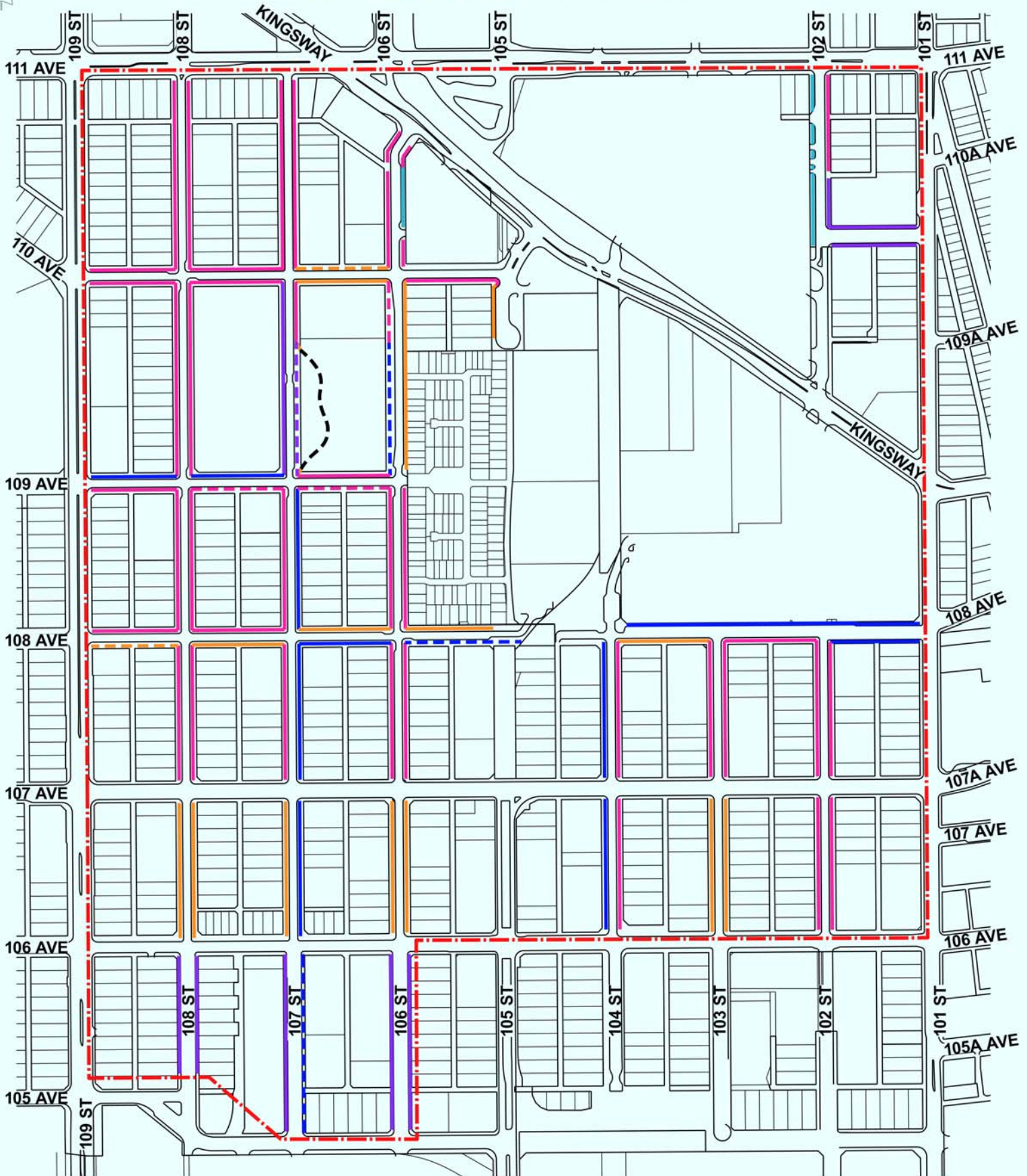


# Central McDougall Residential Street Modifications



\*Preliminary – subject to funding and approval

# Central McDougall Sidewalk Location Plan



## LEGEND

- |                    |   |                          |               |
|--------------------|---|--------------------------|---------------|
| Proposed 1.5m Walk | Proposed 2.4m Walk                          | New 1.8m Walk            | Project Limit |
| Proposed 1.8m Walk | Proposed 3.0m Shared Use Path/Concrete Walk | New 2.4m Walk            |               |
| Proposed 2.0m Walk | New 1.5m Walk                               | New 3.0m Shared Use Path |               |

\*Preliminary – subject to funding and approval

SHARE YOUR VOICE  
SHAPE OUR CITY

