

# City-owned Outdoor Spaces

In April, we asked for public input on what is working and needs attention in City-owned outdoor spaces.

We received input that pointed to six locations in the neighbourhood. We also received ideas related to entry features and wayfinding signage.

In September, we shared concepts for the six locations and proposed ideas and locations for entry features and wayfinding signage. We asked people to tell us which elements incorporated into each concept were most important to focus on. We also asked people to rank the eight options according to the order that updates should be prioritized.

The resulting order is:

1. Central McDougall Park and John A. McDougall School
2. Community Garden
3. Victoria School of the Arts
4. North Edge Park
5. Royal Alexandra Hospital
6. 105 Avenue LRT Crossing
7. Entry Features
8. Wayfinding

Both entry features and wayfinding signage ranked as lower priority for the neighbourhood and may be considered as part of other neighbourhood-focused programs in the future.

# Priority #1 – John A. McDougall School / Central McDougall Park

Central McDougall Park is recognized as a gem in the neighbourhood, where previous updates to the park helped to make it a desirable and well-used gathering space.

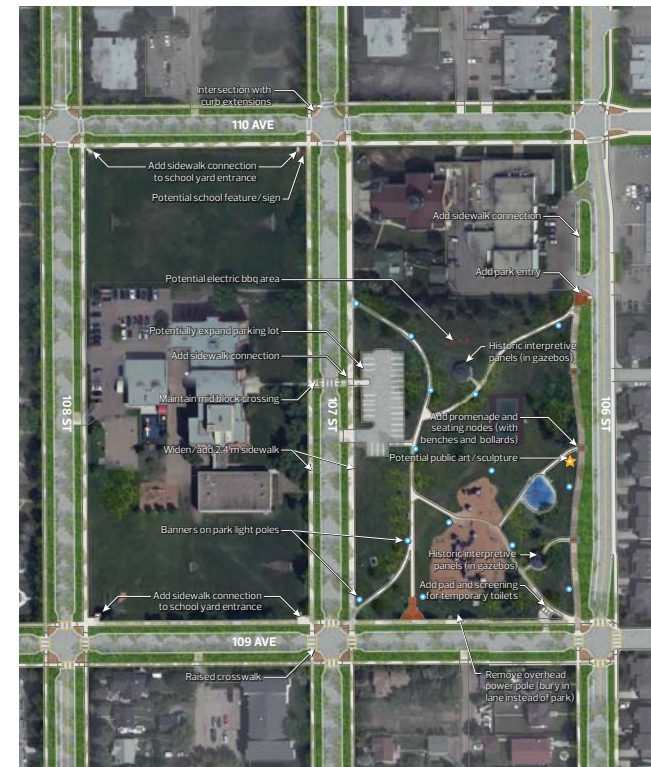
Its central location, proximity to John A. McDougall School, and the opportunity to provide better access to the space and existing amenities make it people's number one priority for additional attention.

While many ideas for new amenities were suggested, the most important ideas focus on improving walkability, connectivity, and accessibility by adding:

- A 2.4m sidewalk on the west side of the park and in front of the school
- A promenade on the east side of the park

These ideas were complemented by high support to add:

- Benches at the park, including along the proposed walkways



**SHARE YOUR VOICE**  
**SHAPE OUR CITY**

\*Preliminary – subject to funding and approval

Edmonton

# Priority #1 – John A. McDougall School / Central McDougall Park

## Top Three Elements



2.4m sidewalk



Promenade



Benches

The City is considering six styles of benches.  
Please use a dot sticker to indicate which style of bench you prefer.



Please use a sticky note to tell us anything else that we should consider before exploring funding opportunities to implement the top three important elements.

A large yellow rectangular area intended for users to attach a sticky note or provide additional feedback.

\*Preliminary – subject to funding and approval

**SHARE** YOUR VOICE  
**SHAPE** OUR CITY

Edmonton



# Priority #2 – Community Garden

As part of early public engagement, Central McDougall's community garden was identified as a nurturing, family-friendly, and highly supported gathering place in the neighbourhood.

People were looking for ways to gain even more from this space and, as part of the concept presented in September, were most interested in:

- Adding fruit bearing trees to the garden
- Providing a shade feature that also supports sustainable gardening by collecting water for irrigation
- Celebrating the identity of the garden and helping other people be part of the experience by adding an entry sign, including contact information



\*Preliminary – subject to funding and approval

**SHARE** YOUR VOICE  
**SHAPE** OUR CITY

Edmonton

# Priority #2 – Community Garden

## Top Three Elements



Fruit Trees



Shade Feature



Entry Sign

The City is considering different varieties of fruit trees (e.g., apple, cherry). Please use a sticky note to tell us any types of trees you would like to see added to the open space.

Please use a sticky note to tell us anything else that we should consider before exploring funding opportunities to implement the top three important elements.

\*Preliminary – subject to funding and approval

**SHARE** YOUR VOICE  
**SHAPE** OUR CITY

Edmonton

# Priority #3 – Victoria School of the Arts

The area near Victoria School of the Arts is a busy place for people who walk, bike, and drive.

As part of public engagement, there was high interest in making this a safer area for pedestrians, better supporting connectivity and the flow of people walking through the areas, supporting mobility for vulnerable populations in the neighbourhood, and supporting buses and parents to drop-off and pick-up students.

People identified the top three elements to upgrade as:

- Wider sidewalks
- Curb extensions at the intersections located along 108 Avenue at 101, 102, 103, and 104 Street
- A defined areas for buses and cars to stop to drop-off and pick-up students in the school zone



\*Preliminary – subject to funding and approval

**SHARE** YOUR VOICE  
**SHAPE** OUR CITY

Edmonton



# Priority #3 – Victoria School of the Arts

## Top Three Elements



Wider sidewalks



Curb extensions

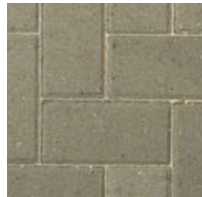


Drop-off area

The City is considering four options for pavers/coloured concrete.  
Please use a dot sticker to indicate which colour you prefer.



Regular Concrete



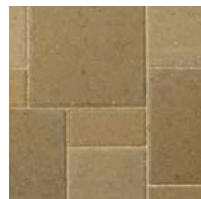
Grey



Charcoal



Red



Desert Buff

Please use a sticky note to tell us anything else that we should consider before exploring funding opportunities to implement these features.

A large yellow rectangular area intended for a sticky note.

\*Preliminary – subject to funding and approval

**SHARE** YOUR VOICE  
**SHAPE** OUR CITY

Edmonton

# Priority #4 – North Edge Park

As part of early public engagement, North Edge Park was identified a City-owned park that would benefit from additional amenities to further encourage people to gather there and enjoy it.

In particular, North Edge Park was identified as a location that would benefit from exercise equipment to support active living, and also as a place that could also enhance its natural assets.

In September, people identified the top four elements to upgrade as:

- Adult outdoor exercise equipment
- A tree canopy to provide shade in the park
- Central plaza with shade feature
- Benches that offer solar-powered wifi and phone charging stations



\*Preliminary – subject to funding and approval

**SHARE YOUR VOICE  
SHAPE OUR CITY**

Edmonton



# Priority #4 – North Edge Park

## Top Four Elements



Exercise equipment



Tree Canopy



Shade Feature



Wifi bench

Please use a sticky note to tell us anything else that we should consider before exploring funding opportunities to implement these features.

A large yellow rectangular area intended for users to place sticky notes or provide additional feedback.

\*Preliminary – subject to funding and approval

**SHARE** YOUR VOICE  
**SHAPE** OUR CITY

Edmonton

# Priority #5 – Royal Alexandra Hospital

As part of Central McDougall's neighbourhood renewal, the City-owned area around the Royal Alexandra Hospital was considered for improvements.

Through public engagement, people stressed the importance of putting pedestrian safety first, including supporting mobility, accessibility, and people with visual impairments. The concept for the Royal Alexandra Hospital focused on improving walkability, safety, visual appeal, and access to public transit stops.

In September, people identified the top three elements to upgrade as:

- Wider sidewalks
- Curb extensions at intersections
- Curb ramps with a tactile walking surface indicator

Note: The Royal Alexandra Hospital is currently conducting a traffic study. The final design for the site may be altered to align with the results of this study.



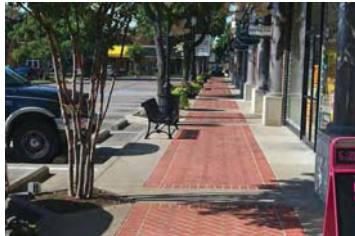
\*Preliminary – subject to funding and approval

**SHARE** YOUR VOICE  
**SHAPE** OUR CITY

Edmonton

# Priority #5 – Royal Alexandra Hospital

## Top Three Elements



Wider sidewalks



Curb extensions



Surface indicator ramp

The City is considering four options for pavers/coloured concrete.  
Please use a dot sticker to indicate which colour you prefer.



Regular Concrete



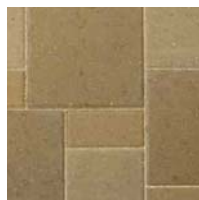
Grey



Charcoal



Red



Desert Buff

Please use a sticky note to tell us anything else that we should consider before exploring funding opportunities to implement these features.

A large yellow rectangular area for a sticky note.

\*Preliminary – subject to funding and approval

**SHARE** YOUR VOICE  
**SHAPE** OUR CITY

Edmonton



# Priority #6 – LRT Crossing

As part of early public engagement, people identified pedestrian safety, neighbourhood walkability and connectivity, and neighbourhood cleanliness as areas for improvement.

The 108 Avenue LRT crossing is a central location that plays an important role in pedestrian safety, neighbourhood walkability and connectivity, and neighbourhood cleanliness.

The area currently has benches, waste receptacles, and landscaping, and public input told us that they all need more attention. On September 15, we showed improvements to all three and the feedback was:

- All beautification is appreciated
- Trees and landscaping is appreciated as long as it doesn't introduce hiding places
- Repaired and replacement benches will be appreciated, and there is a need for them in other areas of the neighbourhood as well
- The waste bins are important to supporting neighbourhood cleanliness



Please use a sticky note to tell us anything else that we should consider before exploring funding opportunities to implement these features.

A large yellow rectangular area intended for users to write feedback on sticky notes.

\*Preliminary – subject to funding and approval

**SHARE** YOUR VOICE  
**SHAPE** OUR CITY

Edmonton