

# Commercial Street Renewal

In September, we presented five options for commercial streets. Each option presented ideas to:

- Calm traffic
- Preserve parking
- Integrate wider sidewalks
- Add trees where possible
- Add a bike route along 107 Street

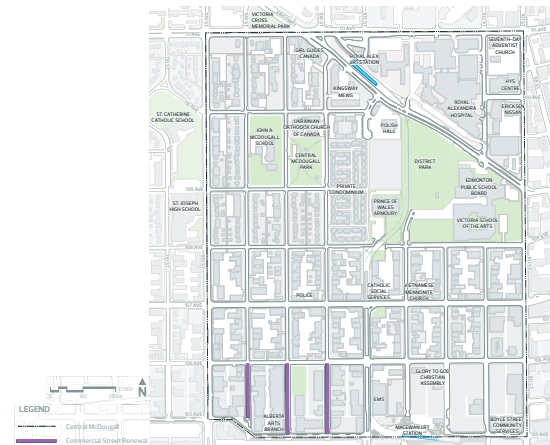
The people who provided feedback on the options told us:

- Ensure pedestrian safety above all
- Widen sidewalks to improve mobility
- Keep existing operation of the streets and focus on
  - Traffic calming measures that are pedestrian friendly (i.e., curb extensions)
  - Maximum parking
- Keep people who bike separate from vehicles

The updated concepts introduce:

- Curb extensions to calm traffic
- Angled parking
- 2.4m sidewalks
- Additional space to plant new trees

107 Street includes a 3.0 m shared-use path that separates pedestrians and people who bike from traffic and will connect to a shared-use path north of 106 Avenue. The City will be responsible for clearing snow on this path.

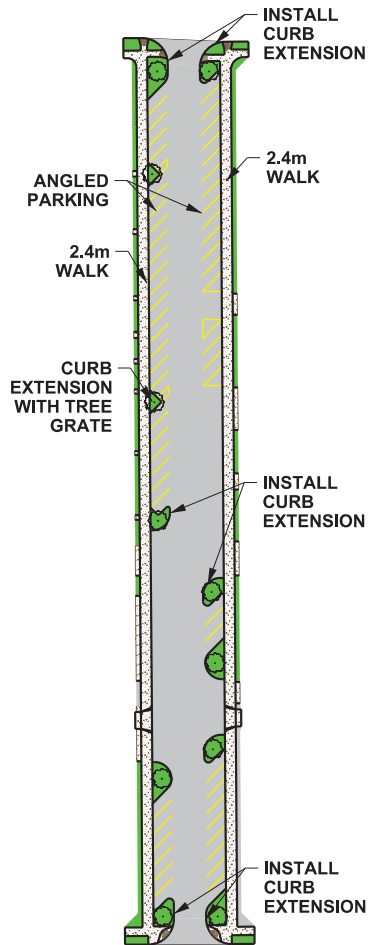


\*Preliminary – subject to funding and approval

**SHARE YOUR VOICE**  
**SHAPE OUR CITY**

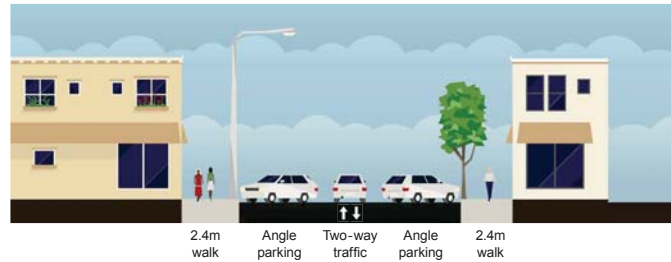
Edmonton

# 106 & 108 Streets from 105 – 106 Avenue



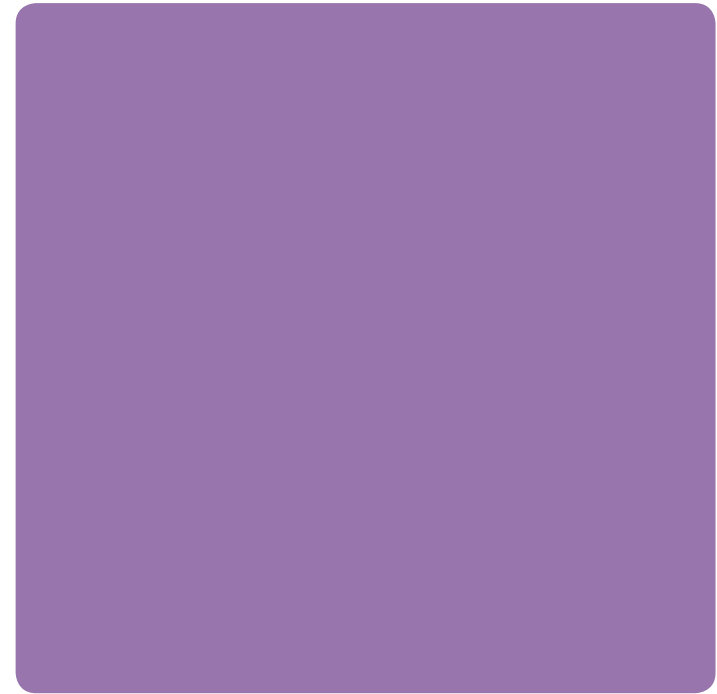
Renewal along 106 and 108 Streets will include:

- Curb Extensions at both intersections and mid-block on the streets
- Angled Parking on both sides of the street
- New, wider (i.e., 2.4m) sidewalks on both sides of the street
- Grates within the curb extensions to accommodate new trees



\*Preliminary – subject to funding and approval

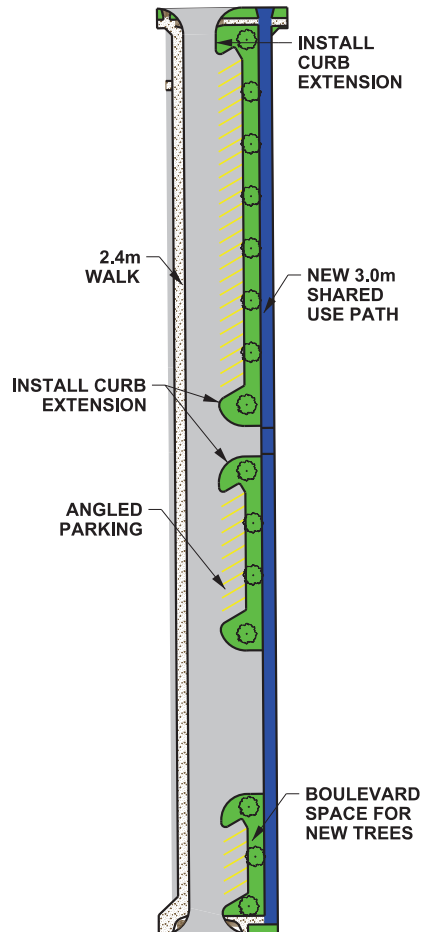
Is there anything else we should consider before proceeding with the commercial street preliminary design along 106 Street and 108 Street from 105 – 106 Avenue? Please use a sticky note to provide any comments.



**SHARE** YOUR VOICE  
**SHAPE** OUR CITY

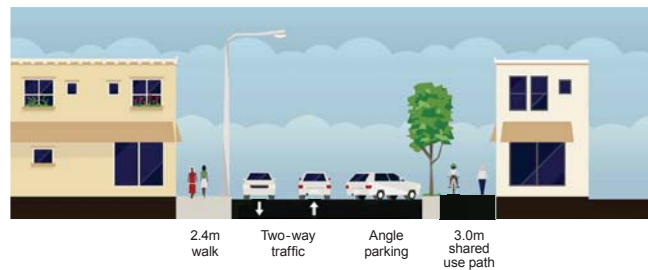
Edmonton

# 107 Street from 105 – 106 Avenue



Renewal along 107 Street will include:

- Curb Extensions at both intersections and mid-block on the street
- Angle parking on the east side of the street
- A 2.4m monowalk on the west side of the street
- A 3.0m City-funded and maintained shared use path on the east side of the street as part of the north to south bike route
- Boulevard space around the angle parking that accommodates new trees



\*Preliminary – subject to funding and approval

Is there anything else we should consider before proceeding with the commercial street preliminary design along 107 Street from 105 – 106 Avenue? Please use a sticky note to provide any comments.



**SHARE** YOUR VOICE  
**SHAPE** OUR CITY

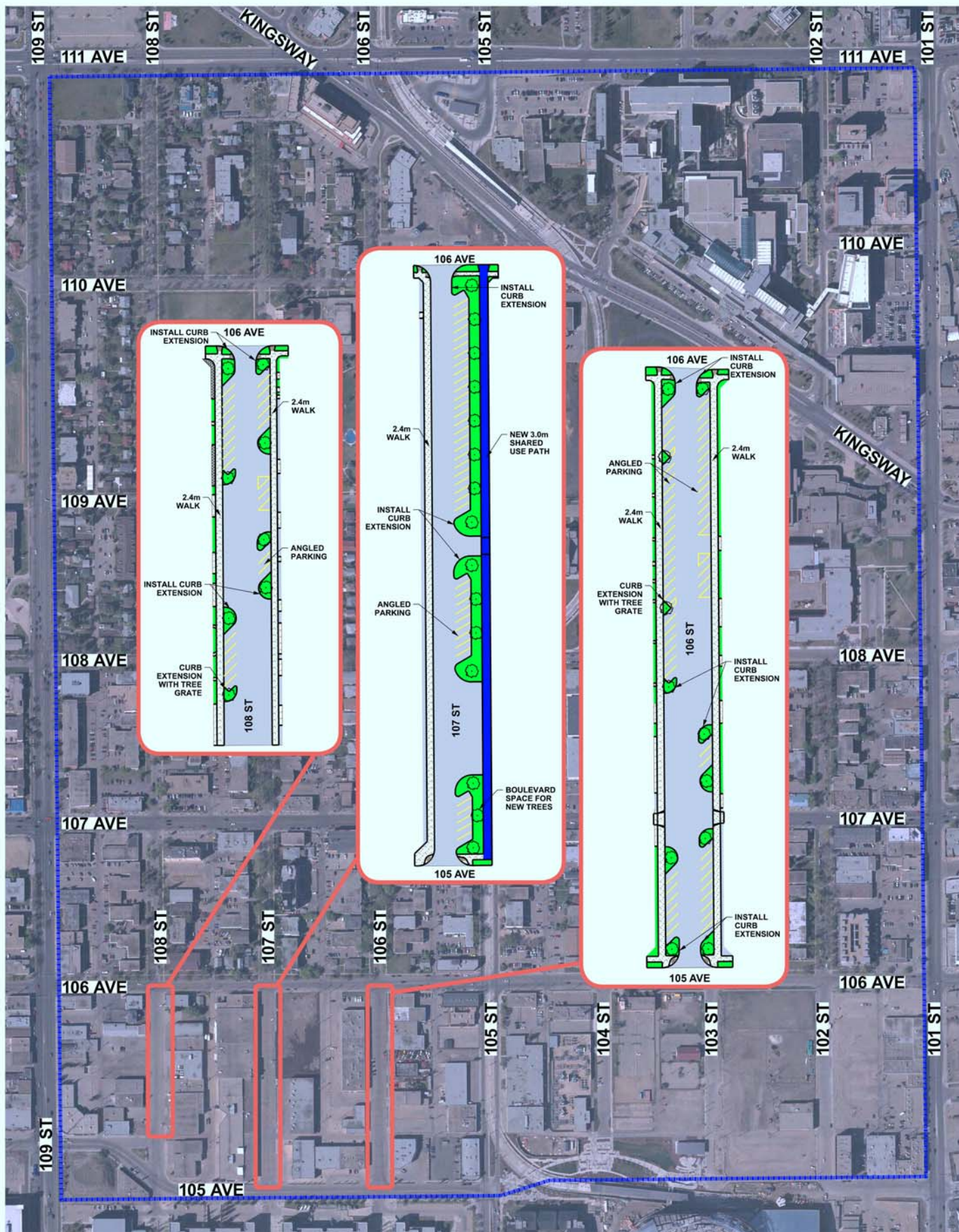
Edmonton





# Central McDougall

## Commercial Street Modifications



\*Preliminary – subject to funding and approval

SHARE YOUR VOICE  
SHAPE OUR CITY

Edmonton