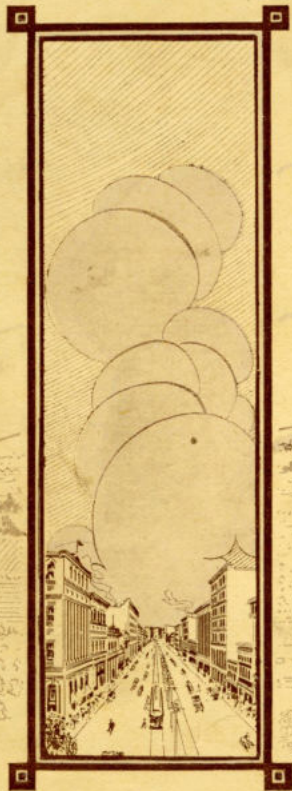


PICTORIAL EDMONTON



971.233
N2R

971.2334

BYR

T

HIS booklet is made for the purpose of placing Edmonton's progress and possibilities before the public in pictorial form—the best way to present a story—because it is concrete, pleasing to the eye and possible to perceive at a glance.

We have tried to use our large stock of pictures—the fruits of much work and close application to our business—and all of the forces of our establishment, to the best advantage in producing this photographic presentation of the progress and push of this, our city of Edmonton. The work has been cordially received by the business men of Edmonton to whom it has been presented, and we venture to hope that its wider circulation will bring nothing but pleasure, profit and instruction to those who receive it.

THE BYRON-MAY
COMPANY, LTD.

EDMONTON, ALTA.
JANUARY 1, 1914

(Copyrighted 1914 by The Byron-May Company, Ltd.)



PICTORIAL · EDMONTON



BUILDINGS

PICTORIAL · EDMONTON



BUILDINGS

PICTORIAL EDMONTON



BLOCKS

PICTORIAL EDMONTON



BANKS

PICTORIAL · EDMONTON



CHATEAU MACDONALD S.F.R.



CECIL HOTEL



ROYAL GEORGE



ROBERTS HOTEL



YORK HOTEL



VALE HOTEL



WESTWOOD HOTEL



CORDOVA HOTEL



KING EDWARD HOTEL



SELKIRK HOTEL



EMPIRE HOTEL



PENDERGAST HOTEL

HOTELS

PICTORIAL · EDMONTON



LEMAI HOTEL



ST. JAMES HOTEL



DOMINION HOTEL



TRANSIT HOTEL



COMMERCIAL HOTEL



EDWORTHY HOTEL



RICHELIEU HOTEL



GREY HOTEL



ST. REGIS HOTEL



CASTLE HOTEL



BRUNSWICK HOTEL



SCOTIA HOTEL

HOTELS

PICTORIAL EDMONTON

HIGH SCHOOL



ALEX TAYLOR SCHOOL



BOGGAN STREET SCHOOL



ARMSTRONG SCHOOL



P.C. SEMBARD SCHOOL



ALBERTA COLLEGE



POWERS SCHOOL



SPICERLY SCHOOL



ALBERTA JEWEL SCHOOL



SOUTH EDMONTON SCHOOL



CLIFTON SCHOOL



MARKET AVE. SCHOOL



P.C. SEMBARD SCHOOL, KINGSTON AVE.



COLLEGIATE INSTITUTE



HYGASH BUSINESS COLLEGE



JEZUIT COLLEGE



ARTS AND SCIENCE SCHOOL



S.P. JOSEPH'S COLLEGE



UNIVERSITY OF ALBERTA



SCHOOLS & COLLEGES



ALBERTA BUSINESS COLLEGE

PICTORIAL EDMONTON

ROYAL ALEXANDRA HOSPITAL



MISERICORDIA HOSPITAL



ISOLATION HOSPITAL



NORTHERN CLUB

GENERAL HOSPITAL



CHILDREN'S SHELTER



CURLING THE HIGHLANDS



EDMONTON CLUB



STRATHCONA HOSPITAL

HOSPITALS & CLUBS

PICTORIAL · EDMONTON



WHOLESALE HOUSES

PICTORIAL · EDMONTON



WAREHOUSES

PICTORIAL · EDMONTON

EDMONTON IRON WORKS



EDMONTON TENT & MAT PRESS CO.



ALBERTA MILLING



WESTERN FURRY & FUR CO.



CRYPPELL-OTTWELL



EDMONTON ICE MILLING CO.



EDMONTON CITY DAIRY CO.



GREAT NORTHERN MILLS

EDMONTON BREWING & MALTING CO.



SMITH-BROWN PARTY CO.



EMERY PARK CO.

EDMONTON SHOES & LEATHER CO.



WINDWARD DAIRY CO.



INDUSTRIES

TWO CITY COAL CO.



PICTORIAL · EDMONTON



PARKS · BRIDGES & VIEWS

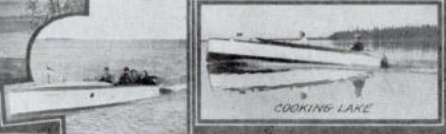
PICTORIAL · EDMONTON



JASPER PARK



LAKE WABANUN



COOKING LAKE



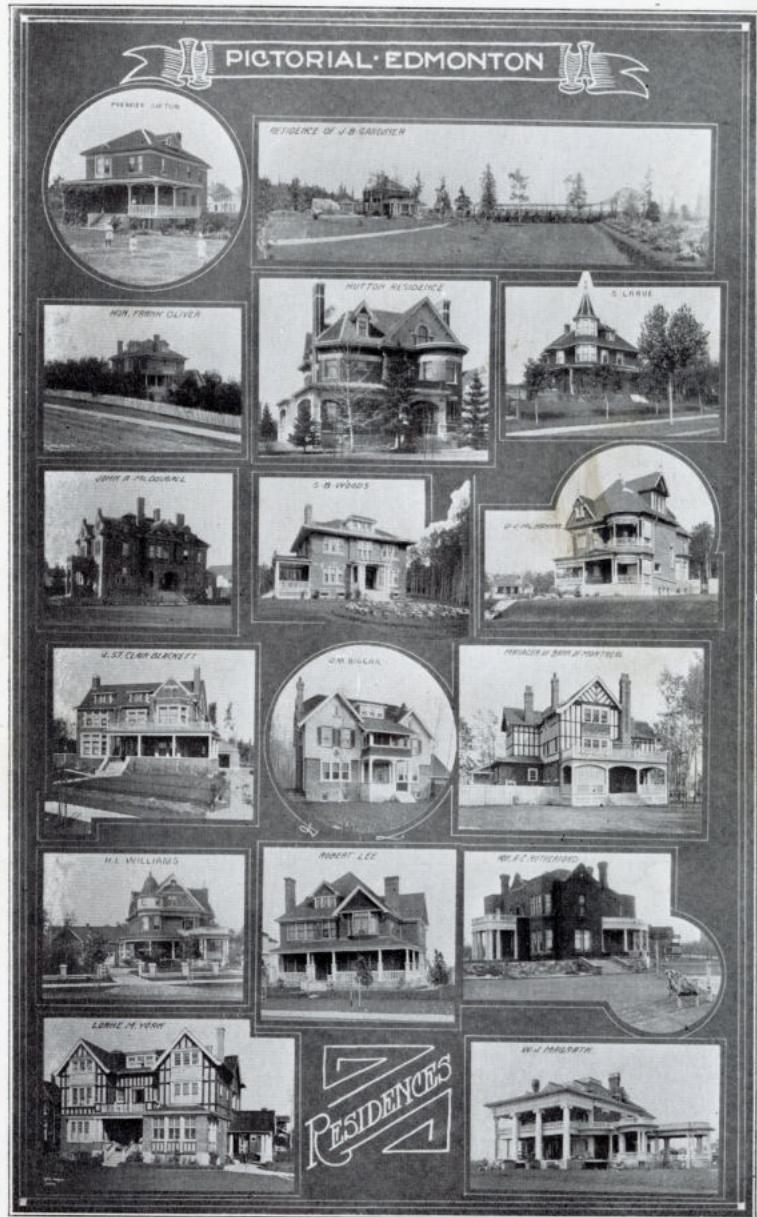
SUMMER

RESORTS

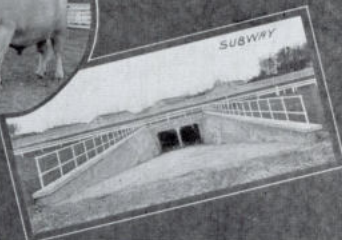
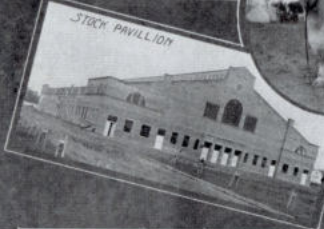
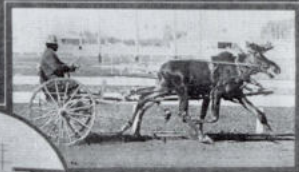
PICTORIAL EDMONTON



SPORTS

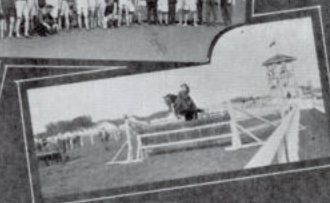


PICTORIAL EDMONTON



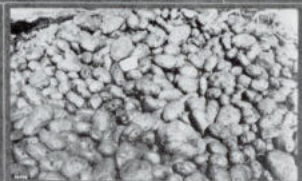
EDMONTON EXHIBITION

PICTORIAL EDMONTON



EDMONTON EXHIBITION

PICTORIAL · EDMONTON



FARM SCENES

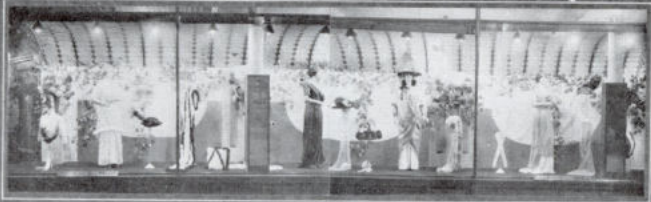


PICTORIAL EDMONTON



PICTORIAL EDMONTON

PICTORIAL · EDMONTON



THE HUDSON'S BAY COMPANY



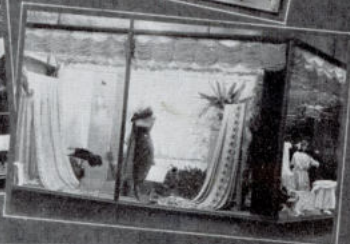
CALEDONIAN STORE



JAMES RAMSEY



THE ACME CO.



WINDOW DISPLAYS

PICTORIAL · EDMONTON



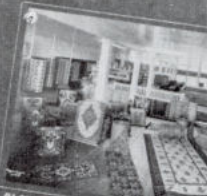
SHASTA GRILL



THE ACME CO.



C.P.R. OFFICES



BLOWEY-HENRY CO.



JOHNSTON WALKER LTD.



THE DOUGLAS CO.



POMROY CLEAR STORE



THE NORTHERN HARDWARE



THE BOSTON STORE



JAMES RAMSEY LTD.



JACKSON BROS.

INTERIORS

PICTORIAL · EDMONTON



No. 2 FIRE HALL



MOTOR CHEMICAL



No. 4 FIRE HALL



CENTRAL FIRE HALL & POLICE STATION



C.P.R. DEPOT



No. 5 FIRE HALL



C.N.R. DEPOT



No. 6 FIRE HALL



NEW G.T.P. DEPOT



EDMONTON



GRAND TRUNK RY. YARDS



C.N.R. YARDS



C.P.R. SOUTH SIDE DEPOT



No. 7 FIRE HALL

FIRE HALLS & DEPOTS

PICTORIAL · EDMONTON



FARM SCENES

PICTORIAL · EDMONTON



FIRST BAPTIST



2382 ST. PRESBYTERIAN



1ST PRESBYTERIAN



R.C. CHURCH 1021 ST.



FRANCISCAN MONASTERY



R.C. CHURCH KINISTINO AVE



MCRUSHALL
METHODIST



KNOX PRESBYTERIAN



EDMONTON
PRESBYTERIAN



JEWISH SYNAGOGUE



NO. EDMONTON
PRESBYTERIAN



ANGLICAN
1611 ST.



ALL SAINTS
ANGLICAN

CHURCHES

EDMONTON

CAPITAL OF ALBERTA

SEATED in the path of progress, Edmonton cannot fail of becoming a great city. The cities and towns of Western Canada have grown at a rate seldom equalled in the history of the world, and never excelled by any community that has been built—as these cities are—on solid and enduring lines. The reason for this lies in the fact that Western Canada has within its boundaries the last great tract of good and cheap farm lands in the world. Shut off from land of good quality by the prohibition of price, the land-buying people of the world are flocking to this last West in numbers that will soon fill the great prairies with population in millions.

Already there are 67,243 souls in Edmonton, a place which had a population of barely 200 twenty years ago. Schools, churches, banks, stores, hotels, handsome public buildings and splendid private residences are gathered on the river bank, where the Hudson's Bay Company set its trading post and fort. Steam roads cover the country, and Edmonton owns and operates an excellent street car system. Streets that were but trade trails for Indians and trappers a few years ago, are paved with asphalt roadways and granolithic walks are bordered by big buildings. Residential streets have boulevards of green grass and rows of densely foliated trees. Edmonton is a city—not perfect, but certainly progressive and pushing toward its goal of greatness with giant strides. This is the time, and Edmonton is the place, for many men and women to make places for themselves in the world both high and great. There is nothing to bar the path, but lack of initiative; for those who have that quality, the way is open, the goal a certain one.

HOW EDMONTON GROWS

Population

1901	3,167
1911	24,900
1912	53,611
1913	67,243

Bank Clearings

1908	\$ 38,486,496
1910	71,633,115
1911	121,438,394
1912	220,727,624
1913	213,053,319

Building Permits

1905	\$ 702,724
1910	2,159,106
1911	3,672,260
1912	14,446,819
1913	9,242,450

Tax Assessment (Land Only)

1905	\$ 6,620,985
1910	30,105,110
1911	46,494,740
1912	123,512,590
1913	187,941,920

Passengers on Street Railway

1910	3,427,723
1911	6,296,824
1912	11,250,404
1913	17,208,487

For further information apply to
GEORGE M. HALL, Industrial Commissioner
 Edmonton, Alberta.

EDMONTON HAS—

26 Banks & Branches	91 Miles of Sewer.
21 Public School Buildings	25 Hotels—one to cost \$2,000,000.
30 Churches.	3 Transcontinental Railways.
100 Factories.	28 Passenger Trains Daily.
90 Wholesale Houses.	4 Railways building into the Peace River Country.
5 Theatres.	200,000 Square Miles of Tributary Territory.
4 Colleges.	18 Inches of Precipitation a year.
30 Coal Mines — Six Billion Tons in sight.	11 Deaths per thousand per year.
801 Acres of Public Parks.	18 Hours of Sunshine a day in Midsummer.
111 Miles of Water Mains	
140 Miles of Sidewalks.	
32 Miles of Asphalt Pavement.	

For further information apply to
GEORGE M. HALL, Industrial Commissioner
 Edmonton, Alberta.

The
Edmonton
Printing
and
Publishing
Company
Limited

A97-57

City of Edmonton Archives Collection

971.233 BYR

This digitized item is from the City of Edmonton Archives' Collection, 971.233 BYR.

Some archival material may be protected by legal restrictions on access. Where possible, restrictions such as FOIP have been noted on the finding aids.

The copyright law of Canada governs the making of reproductions of copyright material. Certain copying may be an infringement of the copyright law. The City of Edmonton Archives is not responsible for infringing copies made by its researchers.

To request material, please contact the Reference Archivist at 780-496-8711 or cms.archives@edmonton.ca and provide us with the following information:

- Fonds number
- Accession number (e.g. A97-123) if applicable
- Series or class number
- Sub-series or sub-class number if applicable
- File number
- File name

As an example, you would request MS-123 series 1 sub-series 1.2 file 23 Correspondence

Unless otherwise specified, this finding aid is © 2022 City of Edmonton.