



60426

EA-500-455



60963

EA-500-456



60425

EA-500-457



61136

EA-500-167



61096

EA-500-210



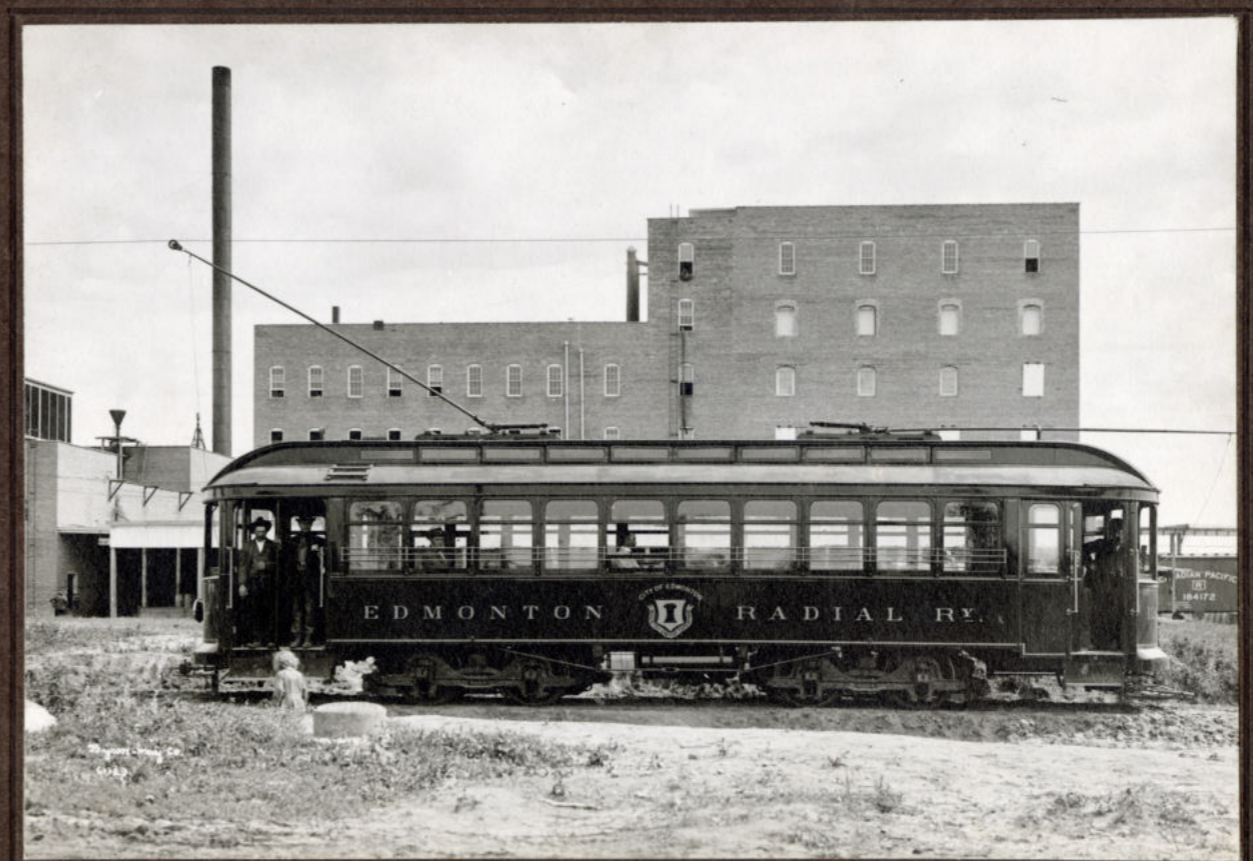
61104

EA-500-130



EA-500-16

61288



61323

EA-500-14



61142

EA-500-156



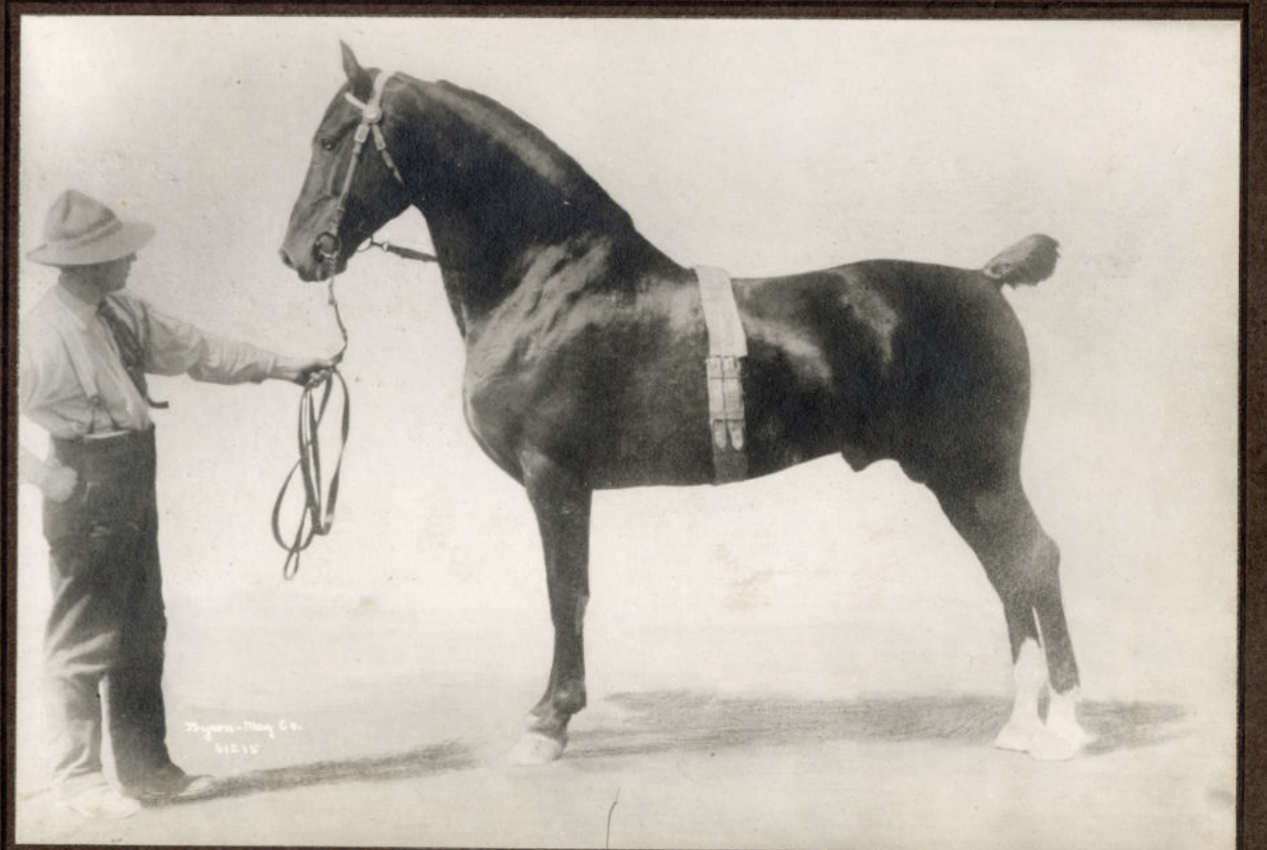
61125

EA-500-162



61265

EA-500-101



61215

EA-500-163



60456

60456

EA-500-46



61216

EA-500-161



Rayson-May Co
60450

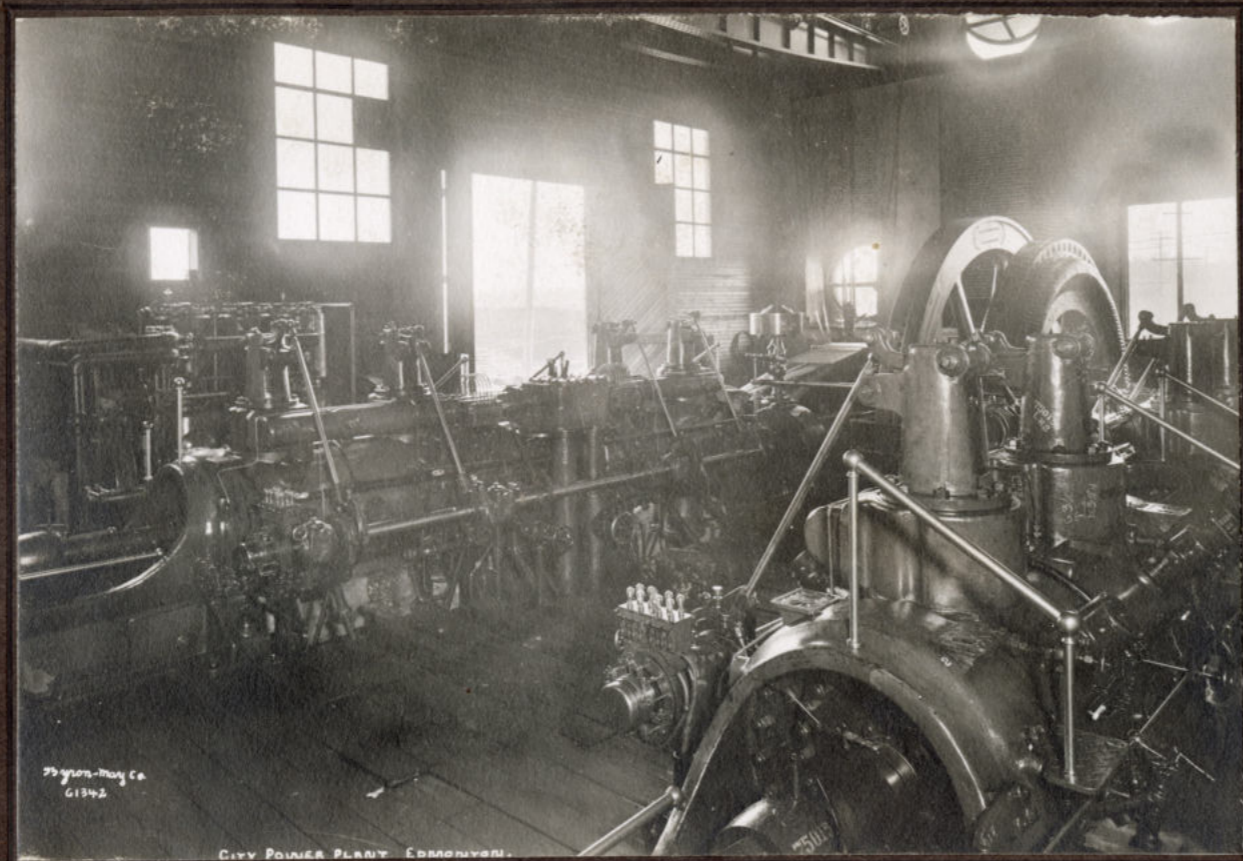
60450

EA-500-160



60357

EA-500-47

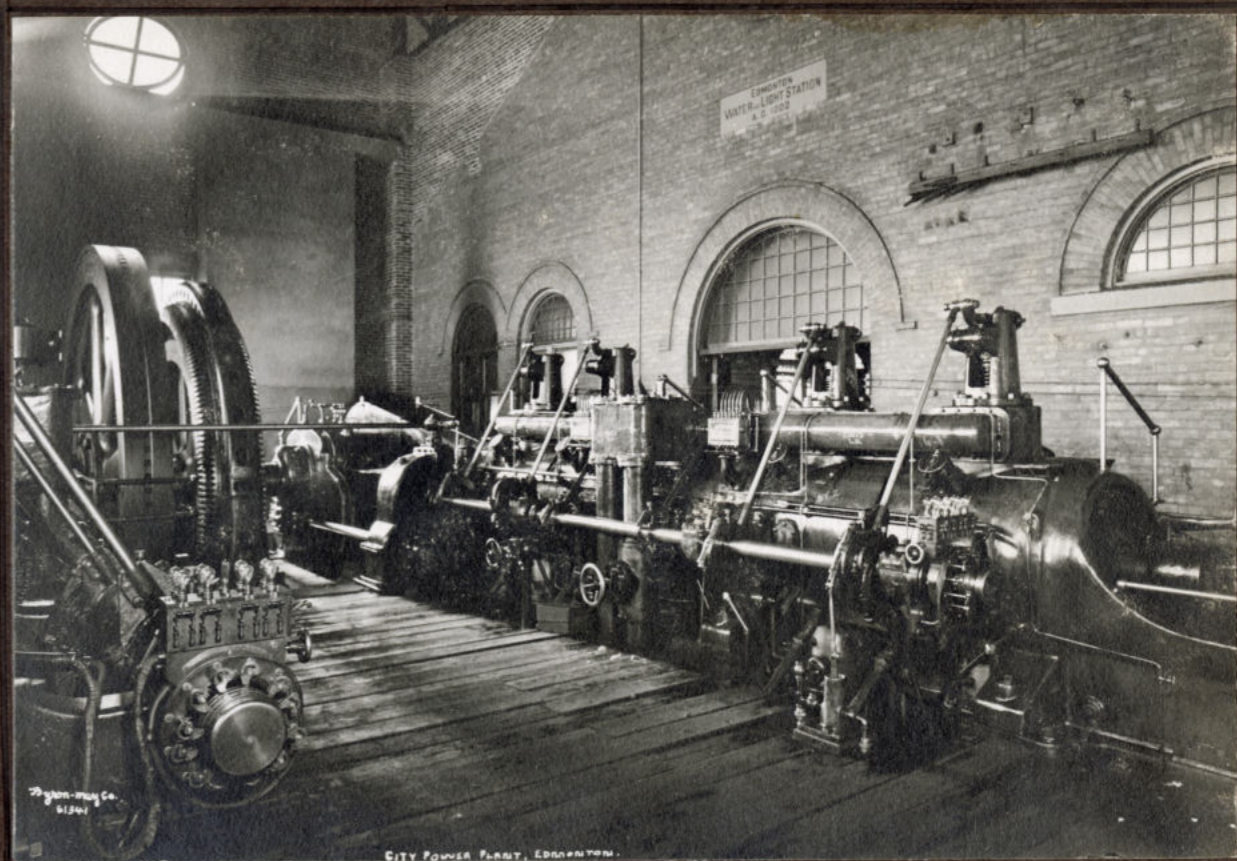


Wagon-Mary Co
61342

CITY POWER PLANT, EDINBURGH.

61342

EA-500-194

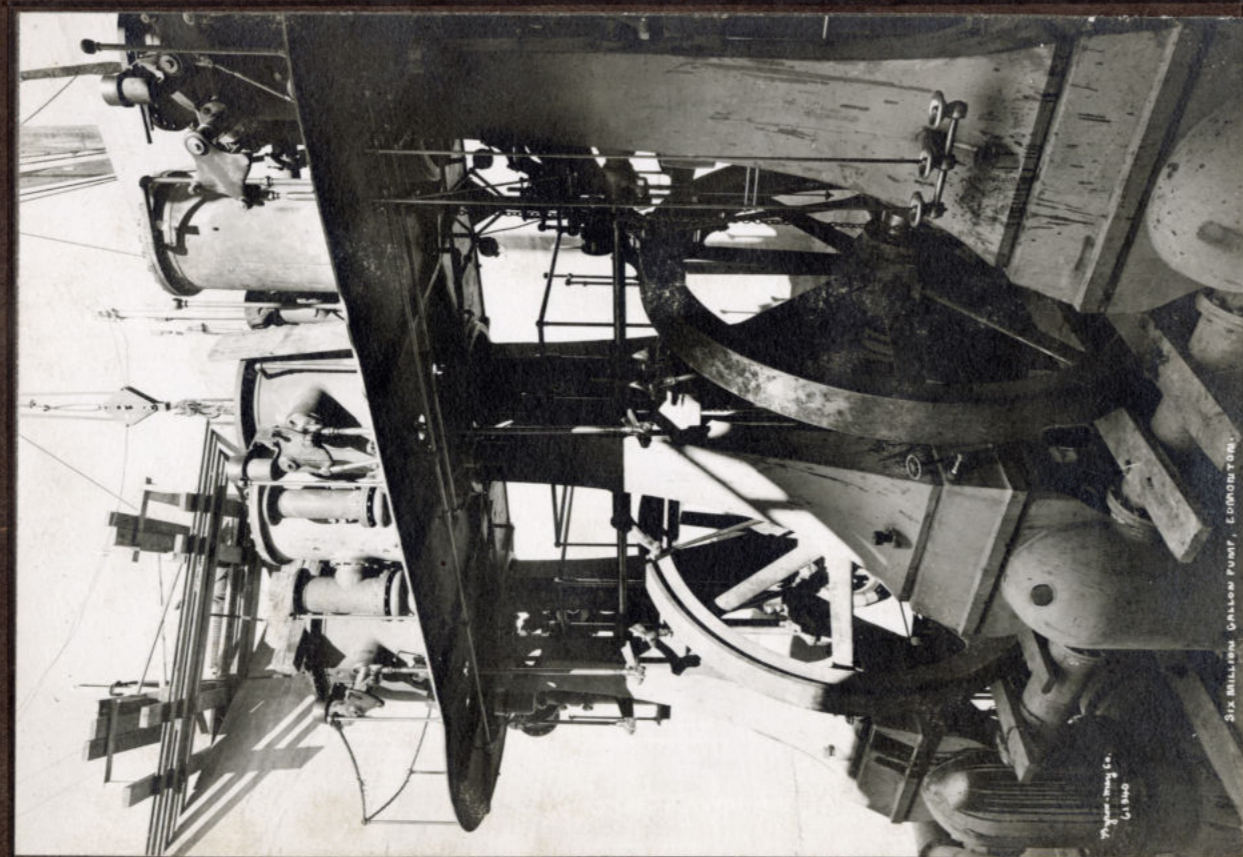


Wagon-Mary Co
61341

CITY POWER PLANT, EDINBURGH.

61341

EA-500-190

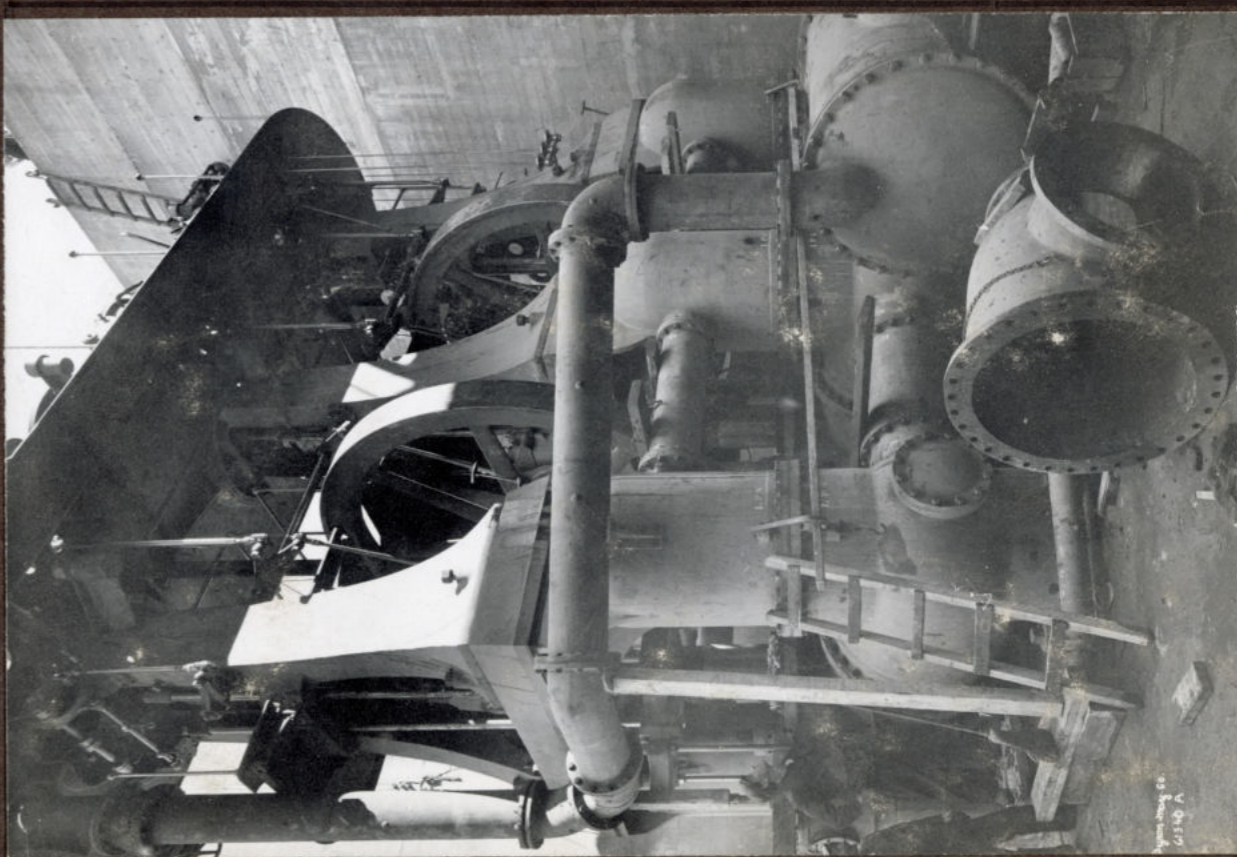


Wagon-Mary Co
61340

SIX MILLION GROSS TONNAGE, EDINBURGH.

61340

EA-500-195



Wagon-Mary Co
61340A

SIX MILLION GROSS TONNAGE, EDINBURGH.

61340A

EA-500-196



EA-500-117

61209



EA-500-285

60060



PRESBYTERIAN CHURCH, 1675 N. ERIE ST. S. DAKOTA

EA-500-115

61551



Dyckman-May Co. 60651

CONVENT, 10th ST. ERIE COUNTY, S. DAKOTA

60651

EA-500-118



61117

EA-500-295



61490

EA-500-299



61214

EA-500-300



61211

EA-500-294

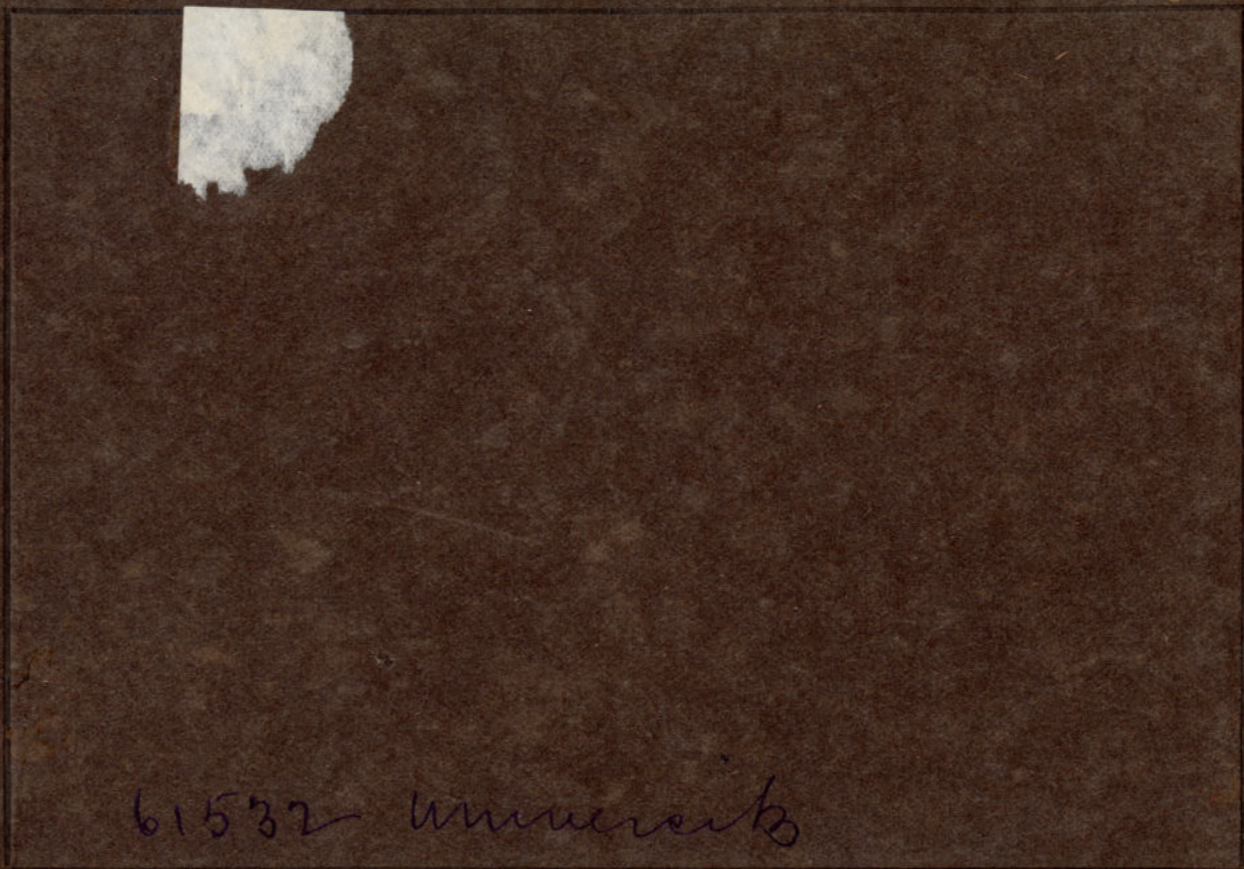


ROLAND W. LINES, Architect, June 9, 1909.
HIGH SCHOOL, EDMONTON.

75 York - May Co.
61217

61217

EA-500-293



61532 University



75 York - May Co.
60654

60654

EA-500-296



75 York - May Co.
61011

61011

SECOND ST. - C. N. R. TRACKS, EDMONTON.

EA-500-175



61303

EA-500-236



61302

EA-500-235



61289

EA-500-230



61297

EA-500-17



61272

#2
52%
PAGE 9

EA-500-69



61276

EA-500-138



61271

EA-500-70



61274

EA-500-64



61348

EA-500-452



61352

EA-500-453



61351

EA-500-454



61379

EA-500-313

Byron - May



60266

EA-500-367



60965

EA-500-368



61464

EA-500-277



61457

EA-500-276



Thylen-May Co.
6115

JASPER AVE. EDMONTON.

61105

EA-500-8



Thylen-May Co.
6115

JASPER AVENUE, EDMONTON.

61115

EA-500-3



Thylen-May Co.
61205

JASPER AVENUE, EDMONTON.

61205

EA-500-1



Thylen-May Co.
61206

JASPER AVENUE, EDMONTON.

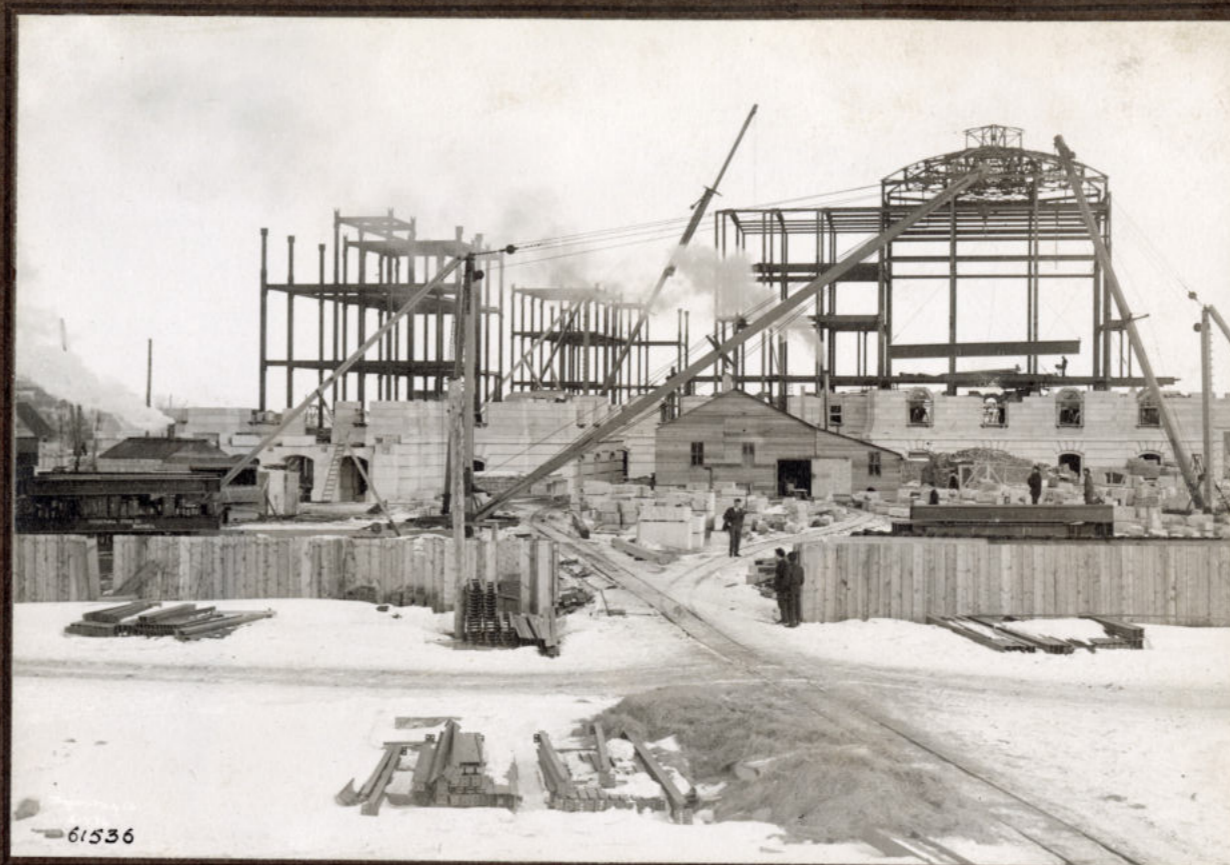
61206

EA-500-7



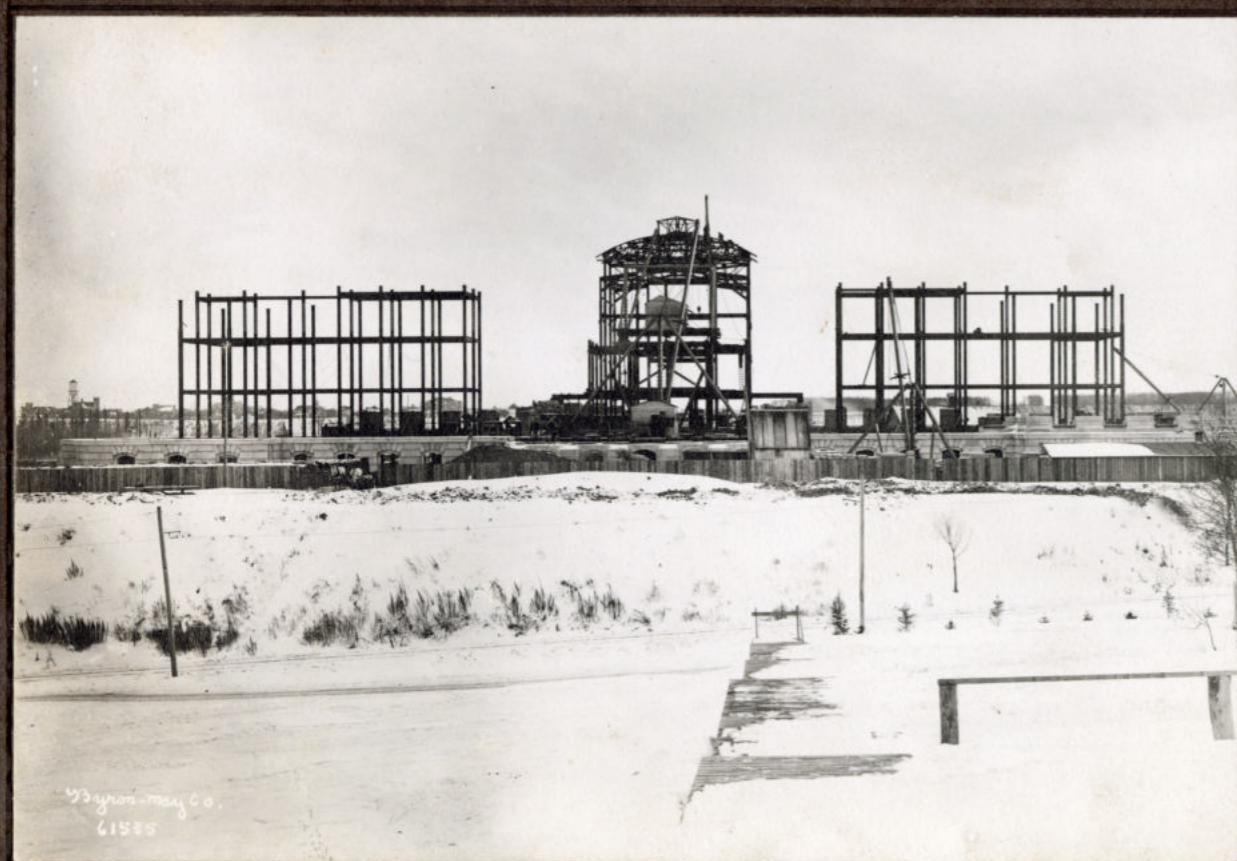
HIGH-LEVEL BRIDGE BETWEEN EDMONTON & STRATHCONA
UNDER CONSTRUCTION

EA-500-42



61536

EA-500-6



Wagon-May Co.
61535

61535

EA-500-5



Wagon-May Co.
61538

61538

EA-500-2



55 year-May Co. 61416

61416

EA-500-61



61428

EA-500-79



55 year-May Co. 61426

61426

EA-500-78



61430

EA-500-225



61439

EA-500-84



61441

EA-500-77



138MM 1
74.30

EA-500-83

92%

97mm

↓

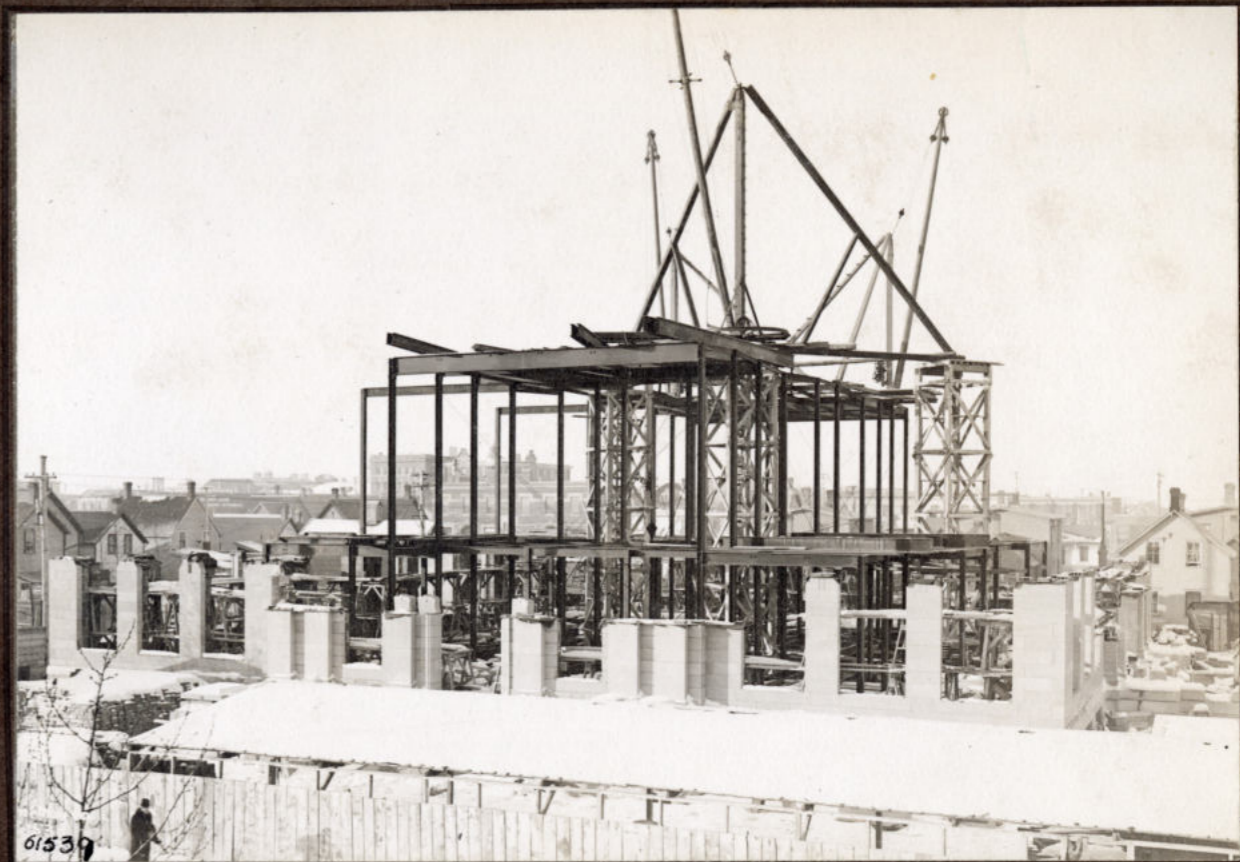
Flagged around
bank

61436



61533A

EA-500-87



61539

EA-500-81



Wagon-Way Co.
61121

EDMONTON.

61121

EA-500-148



61534A

EA-500-88



61010

EA-500-188



61123

EA-500-151



61409

EA-500-126



EA-500-150

61080



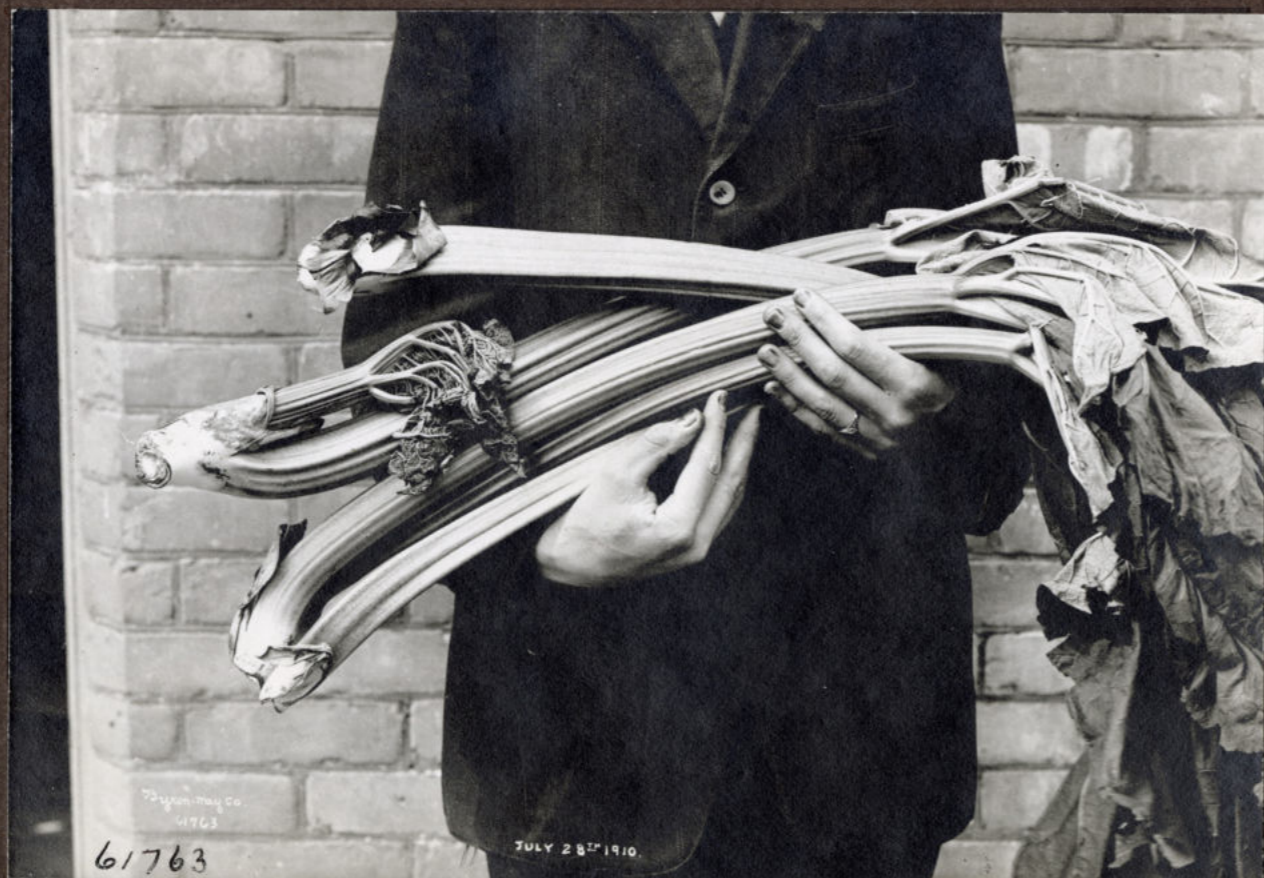
62122

EA-500-56



62123

EA-500-55



61763

JULY 28th 1910

EA-500-32



Progeny Co. 61734

61734

JULY 19th 1910, ERMONTON

EA-500-38



61623

EA-500-116



61983



61711

EA-500-176



61799

EA-500-458





© Starn-May Co. U.S. 9003
 COPYRIGHTED 1910 BY THE STARN-MAY CO. L^{td} EDMONTON, CAN.
 ROBERT SMITHS LOGOLHAS FARM, EDMONTON DISTRICT, CROP, 1910.

62003

EA-500-43



© Starn-May Co. 62006
 ROBERT SMITHS LOGOLHAS FARM, EDMONTON DISTRICT, CROP, 1910.

62006

EA-500-39



© Starn-May Co. 62206
 COPYRIGHTED 1911 BY STARN-MAY CO.
 JASPER AVE. + FIRST STREET, EDMONTON.

62206

EA-500-19



© Starn-May Co. 62211
 JASPER AVE. + FIRST STREET, EDMONTON.

62211

EA-500-20



75 years May Co. 62210

JASPER AVE. & FIRST STREET, EDMONTON.

62210

EA-500-23



75 years May Co. 62208

COPYRIGHTED 1916 BY STROM-MAY CO. EDMONTON.

62208

EA-500-22



75 years May Co. 62209

JASPER AVE. & FIRST STREET, EDMONTON.

62209

EA-500-15



75 years May Co. 62207

JASPER AVE. & FIRST STREET, EDMONTON.

62207

EA-500-24



63404

EA-500-346



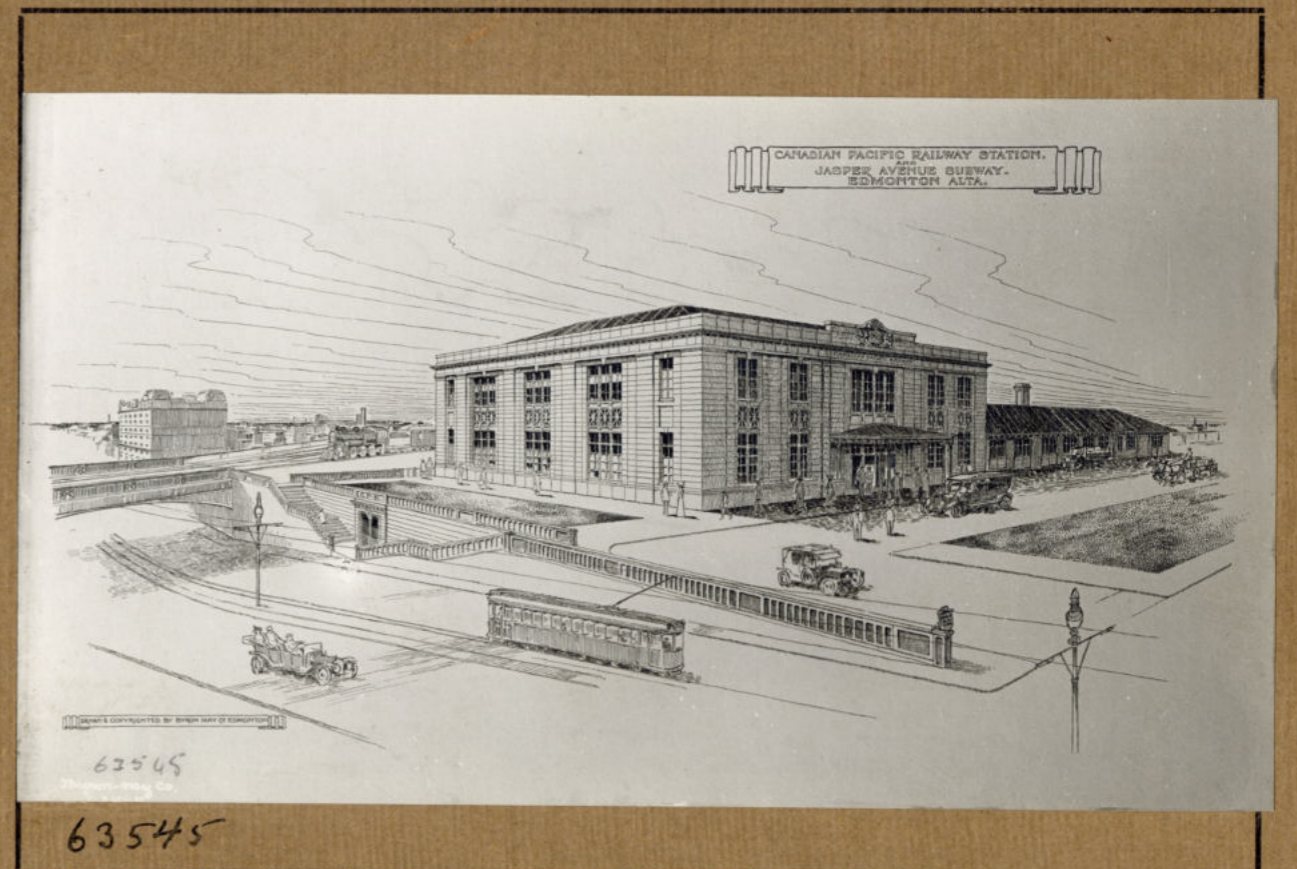
63117

EA-500-324



63524

EA-500-286



63545

63545

EA-500-157



EDMONTON CLUB, EDMONTON.

63840

EA-500-343



14

EA-500-352



SUGGESTED UNION PASSENGER STATION
ON Mc DOUGALL STREET EDMONTON ALBERTA

63525

EA-500-347





63800

EA-500-278



63877

63877

EA-500-335



EA-500-336

63880



Dillon-Mary Co.
63623

63623

CAPITAL HILL, EDMONTON.

EA-500-273



63803

63799



63794

EA-500-271

EA-500-324

63824

Copyright © 1944, R. L. ...
63824



Dupont-McKay Co. 63751

HIGH LEVEL BRIDGE, PARLIAMENT BLDG., EDMONTON.

63751

EA-500-340



Dupont-McKay Co. 63886

MARJORIE ST. BRIDGE, EDMONTON.

63886

EA-500-337

#3 PAGE 9 52% ↑



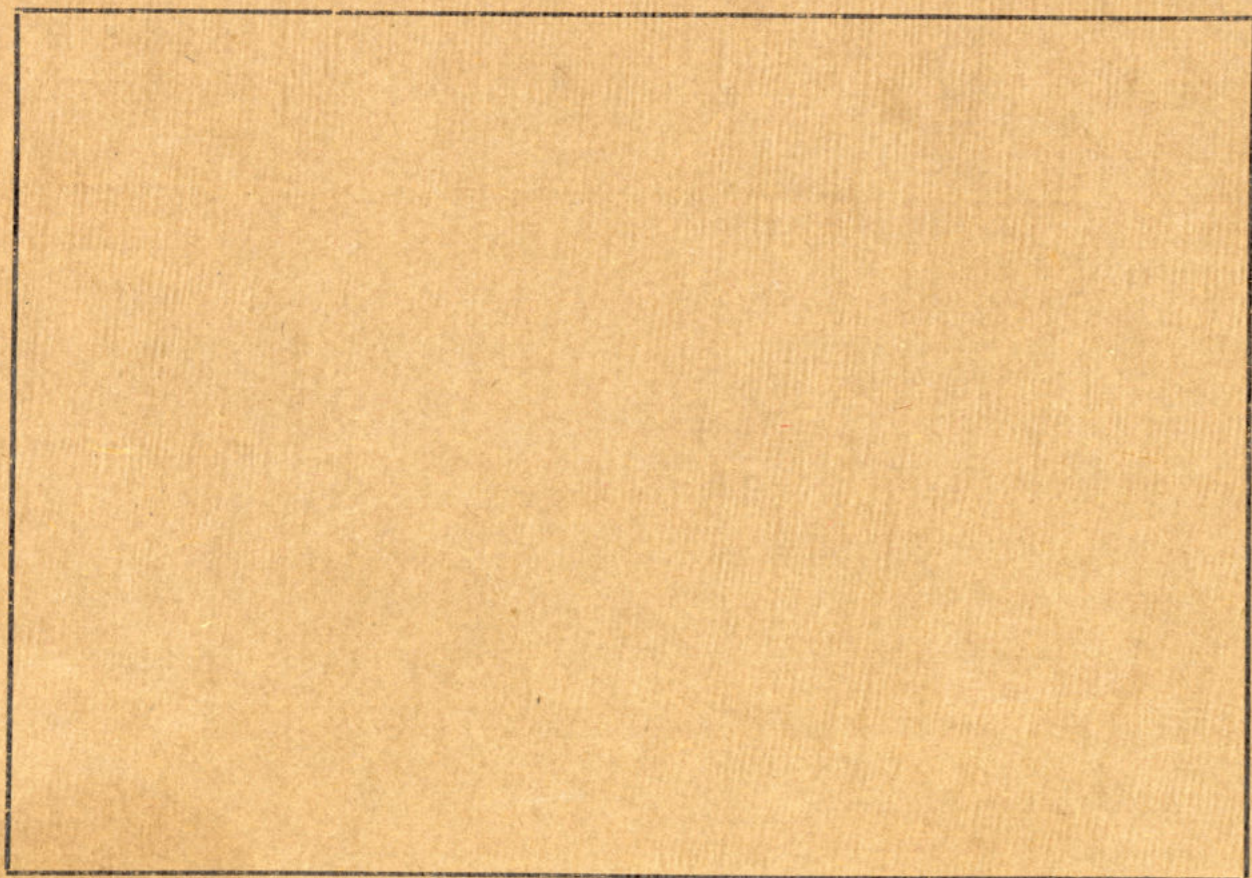
Dupont-McKay Co. 63857

Hudson's Bay Co.'s Fort, Edmonton.

63857

EA-500-321

EDMONTON CHAMBER OF COMMERCE
President
Secretary



59



Stinson-Macy Co.
63921

JASPER AVE. EAST FROM FIRST STREET, EDMONTON.

63921

100 ↑ 82% PAGE 7

EA-500-21



MS-1037

Edmonton Chamber of Commerce fonds

This digitized item is from the City of Edmonton Archives' MS-1037 Edmonton Chamber of Commerce fonds, EA-500 photo album.

Some archival material may be protected by legal restrictions on access. Where possible, restrictions such as FOIP have been noted on the finding aids.

The copyright law of Canada governs the making of reproductions of copyright material. Certain copying may be an infringement of the copyright law. The City of Edmonton Archives is not responsible for infringing copies made by its researchers.

To request material, please contact the Reference Archivist at 780-496-8711 or cms.archives@edmonton.ca and provide us with the following information:

- Fonds number
- Accession number (e.g. A97-123) if applicable
- Series or class number
- Sub-series or sub-class number if applicable
- File number
- File name

As an example, you would request MS-123 series 1 sub-series 1.2 file 23 Correspondence

Unless otherwise specified, this finding aid is © 2021 City of Edmonton.