

Tell Us About City-owned Outdoor Spaces

| **SHARE** YOUR VOICE
SHAPE OUR CITY

Edmonton

City-owned Outdoor Spaces in Inglewood

As part of earlier public engagement, we heard interest in improving outdoor spaces to make them more functional and able to support community-building activities. We also heard interest in better reflecting Inglewood's heritage and character.

To do this, the City is looking at making four types of improvements:

Updates to Parks and Green Spaces	Wayfinding (Directional Signage)	Gateway Features at Entrances to the Neighbourhood	Showcasing Heritage and Character
<ul style="list-style-type: none">• Increased connectivity and accessibility• Encourage people to use, gather in, and make the most of the public parks and green spaces in Inglewood• Improvements to beautify, add fun, and areas for gathering, relaxing, and socializing amenities• Improvements including benches, waste bins, tree planting, barbecues, walkway connections, community garden, sensory play equipment, exercise equipment, and public art	<ul style="list-style-type: none">• Signs that include a map showing walking or biking routes, destinations in the community, and community features• Tools and techniques people use to orient themselves and navigate through the neighbourhood	<ul style="list-style-type: none">• Signage at entry points to the neighbourhood that both welcome people and help to showcase the identity of the neighbourhood	<ul style="list-style-type: none">• Public art and signage that helps to honour, celebrate, and communicate the identity, history, and heritage of Inglewood, including the diversity of its residents• Information on display to inform people of historical significance of building places, people, or events• Information on display to share present day points of interest and stories

We want your input to **REFINE** the concepts for the four types of improvements.

Important note: Some elements proposed may not receive funding; however, efforts will be made to partner with other City programs, community partners and initiatives to leverage additional funding opportunities.

SHARE YOUR VOICE
SHAPE OUR CITY



City-owned Outdoor Spaces in Inglewood

The City's decision to propose the four types of improvements is based on:

What We Heard	What Else We Considered	What We are Working to Achieve
<ul style="list-style-type: none">• Appreciation for the multiple uses of the green space along 122 Street from 111 to 118 Avenue• Appreciation for the amenities in Winnifred Stewart Park• Desire for it to offer more and other green spaces to be enhanced for both function and amenities• Interest in improving safety by improving lines of sight in green spaces• Interest in beautifying outdoor public areas, as well as recognizing the neighbourhood's character and heritage• Interest in more explicitly creating designated areas for different activities in open green spaces (i.e., shared use path, separate dog park)	<ul style="list-style-type: none">• Diverse populations in the neighbourhood with a variety of needs• Placemaking to create public spaces that people use, enjoy and identify as important for their community• Barriers to accessibility• Ways to beautify public spaces and make them inviting• Ways to create opportunities for fun• Facilities to encourage gathering and social activities• Ways to communicate historical information to create a cohesive community identity	<ul style="list-style-type: none">• Common spaces that are functional and have amenities to support fun and community-building activities for people of all ages and abilities• Universal accessibility for all ages and levels of mobility• Park spaces that connect people with nature through landscaping and trees

SHARE YOUR VOICE
SHAPE OUR CITY

City-owned Outdoor Spaces in Inglewood

The following map provides a picture of where updates to City-owned Outdoor Spaces are proposed:

We are looking for your input on:

1. What you see as the positive effects and potential challenges that could arise with the concepts.
2. Ideas related to wayfinding, gateway features, and showcasing heritage and character
3. Which concepts you see as highest priority.



SHARE YOUR VOICE
SHAPE OUR CITY

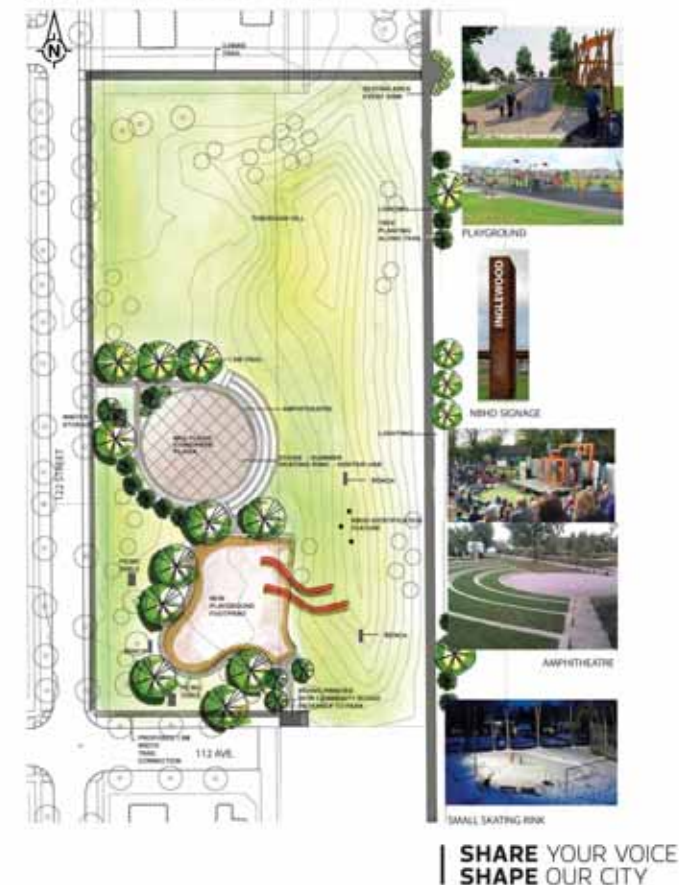
Edmonton

Linear Park (East side of 122 Street between 111–118 Avenues)

How the City arrived at the concept for Linear Park:

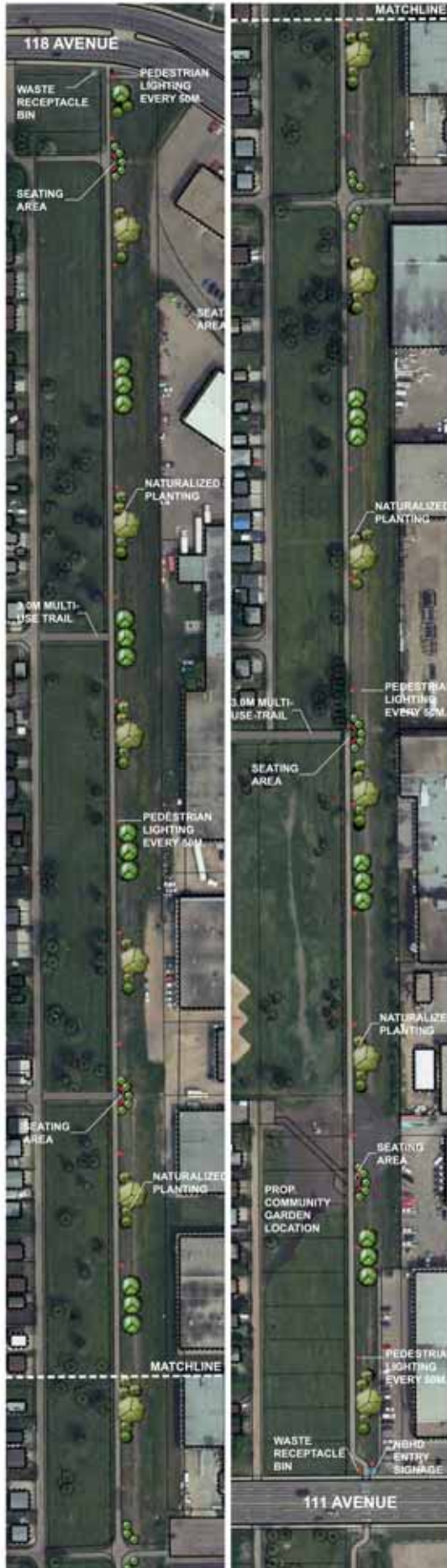
What We Heard	What Else We Considered	What We are Working to Achieve
<ul style="list-style-type: none"> Significant appreciation for this space, and all the different functions that it supports A desire to beautify the space and give it some character Better connectivity and access to the shared use path from other parts of Inglewood and other neighbourhoods A desire to segregate people using the shared use path from the dog park users Interest in additional landscaping, both functional (e.g., shade) and beautifying 	<ul style="list-style-type: none"> Location on a shared use path that is used by regional commuters and neighbourhood residents Existing playground and sledding hill that are used as recreational amenities Adjacent to business industrial buildings Design for resident use in all seasons Currently used as an off-leash dog park Connectivity to allow for universal accessibility 	<ul style="list-style-type: none"> A park space where people go to play, relax, gather for events, socialize with neighbours, have fun, and feel safe A space that residents of Inglewood feel proud of and that visitors know is part of the Inglewood community A space that is inviting and accessible to all ages and abilities Public art that identifies the Linear Park as part of Inglewood Connectivity through new shared use path and walkway connections from adjacent roadways Improved feeling of safety through lighting

What we are proposing:



Linear Park

(Shared Use Path Concept)



SEATING AREA



INTERPRETIVE PANELS

Feedback instructions:

1. Consider the proposed concepts for Linear Park.
2. Use a **YELLOW** sticky note to tell us about any **POSITIVE EFFECTS** that you can see arising from the concept.
3. Use a **BLUE** sticky note to record any **CHALLENGES** that you can see arising from the concept.

POSITIVE EFFECTS

CHALLENGES

SHARE YOUR VOICE
SHAPE OUR CITY



John A. Norris Park

How the City arrived at the concept for John A. Norris Park:

What We Heard	What Else We Considered	What We are Working to Achieve
<ul style="list-style-type: none"> • Interest in adding seating and amenities to this space • Interest in giving this space more function, and encouraging gathering to happen there • Recognition that this is a park that church goers and seniors in close proximity use and could use more often 	<ul style="list-style-type: none"> • Location nearby senior housing and high-rise apartments • Improving accessibility for all • Quiet activities 	<ul style="list-style-type: none"> • Opportunity for a community space to grow food • Connectivity through pathways from adjacent roads • Places to sit and relax or play games • Ways to encourage physical activity

What we are proposing:



SHARE YOUR VOICE
SHAPE OUR CITY

Edmonton

John A. Norris Park

Feedback instructions:

1. Consider the proposed concept for John A. Norris Park.
2. Use a **YELLOW** sticky note to tell us about any **POSITIVE EFFECTS** that you can see arising from the concept.
3. Use a **BLUE** sticky note to record any **CHALLENGES** that you can see arising from the concept.



POSITIVE EFFECTS

CHALLENGES

SHARE YOUR VOICE
SHAPE OUR CITY

Edmonton

Winnifred Stewart Park

How the City arrived at the concept for Winnifred Stewart Park:

What We Heard	What Else We Considered	What We are Working to Achieve
<ul style="list-style-type: none"> Appreciation for the recent upgrades to this park, including the natural feel and connectivity Interest in adding more amenities that encourage people to gather, play, and eat together More accessibility features and consideration of play equipment and amenities for people, including adults, living with disabilities Improving the connectivity through the park 	<ul style="list-style-type: none"> This park was recently enhanced with a walkway from the south, picnic tables, and rock garden Enhancing connectivity and accessibility into the park Adding infrastructure for eating and preparing food Park space visited by Winnifred Stewart Association 	<ul style="list-style-type: none"> Accessibility for all from adjacent roadways Maintain open space for unprogrammed use Respect original vision through copying existing curved path Sensory play equipment for education, problem solving, interaction, and regulation of emotions Facilities for food preparation and eating

What we are proposing:



SHARE YOUR VOICE
SHAPE OUR CITY

Winnifred Stewart Park

Feedback instructions:

1. Consider the proposed concept for Winnifred Stewart Park.
2. Use a **YELLOW** sticky note to tell us about any **POSITIVE EFFECTS** that you can see arising from the concept.
3. Use a **BLUE** sticky note to record any **CHALLENGES** that you can see arising from the concept.



POSITIVE EFFECTS

CHALLENGES

SHARE YOUR VOICE
SHAPE OUR CITY

Edmonton

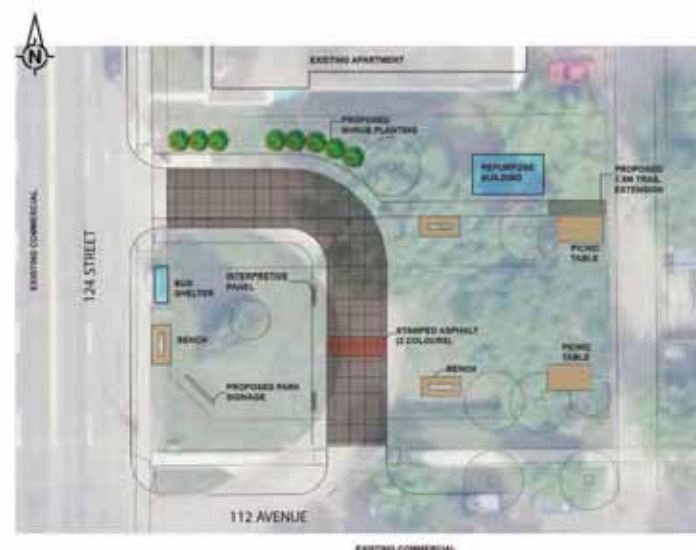
Former Trolley Turn-Around Open Space

East side of 124 Street on the North side of 112 Avenue

How the City arrived at the concept for the Former Trolley Open Space:

What We Heard	What Else We Considered	What We are Working to Achieve
<ul style="list-style-type: none"> Interest in making this a multi-function open space that can support a myriad of activities including different types of events and programming Interest in beautifying and adding more character to this space 	<ul style="list-style-type: none"> Location on busy 124 Street next to apartment building and commercial buildings Historical use as a trolley turnaround and rest stop for drivers Potential use as lunch stop for local workers and visitors 	<ul style="list-style-type: none"> Create an area for gathering and to host events Connectivity of two open spaces by stamped asphalts or coloured paving stones Celebrate neighbourhood history and Edmonton Transit Beautification through landscaping Seating through benches and picnic tables

What we are proposing:



INTERPRETIVE PANEL



STAMPED ASPHALT



BIKE RACK TROLLEY

SHARE YOUR VOICE
SHAPE OUR CITY



Former Trolley Open Space

Feedback instructions:

1. Consider the proposed concept for the former trolley open space at the corner of 124 Street and 112 Avenue.
2. Use a **YELLOW** sticky note to tell us about any **POSITIVE EFFECTS** that you can see arising from the concept.
3. Use a **BLUE** sticky note to record any **CHALLENGES** that you can see arising from the concept.



BIKE RACK TROLLEY



INTERPRETIVE PANEL



STAMPED ASPHALT

POSITIVE EFFECTS

CHALLENGES

SHARE YOUR VOICE
SHAPE OUR CITY

Edmonton

Gateway Features

Part of Inglewood's Neighbourhood Renewal Vision is to be welcoming to everyone, and to reflect its diversity, as well as its connections to Indigenous heritage. As part of previous public engagement, we heard that adding gateway features that help to welcome and introduce people to Inglewood and showcase the character and identity of the neighbourhood are desired. Our previous engagement also helped us to identify some proposed locations for gateway features. We are looking for your input on what these gateway features could look like and where they would be most visible and welcoming.

Feedback instructions:

Please use a sticker to tell us where else you would like to see gateway features added at entrances into Inglewood.



Feedback instructions:

Please use a sticky note to tell us what you would like to see gateway features look like or showcase about the neighbourhood.

Please place sticky notes here

SHARE YOUR VOICE
SHAPE OUR CITY

Edmonton

Wayfinding Features

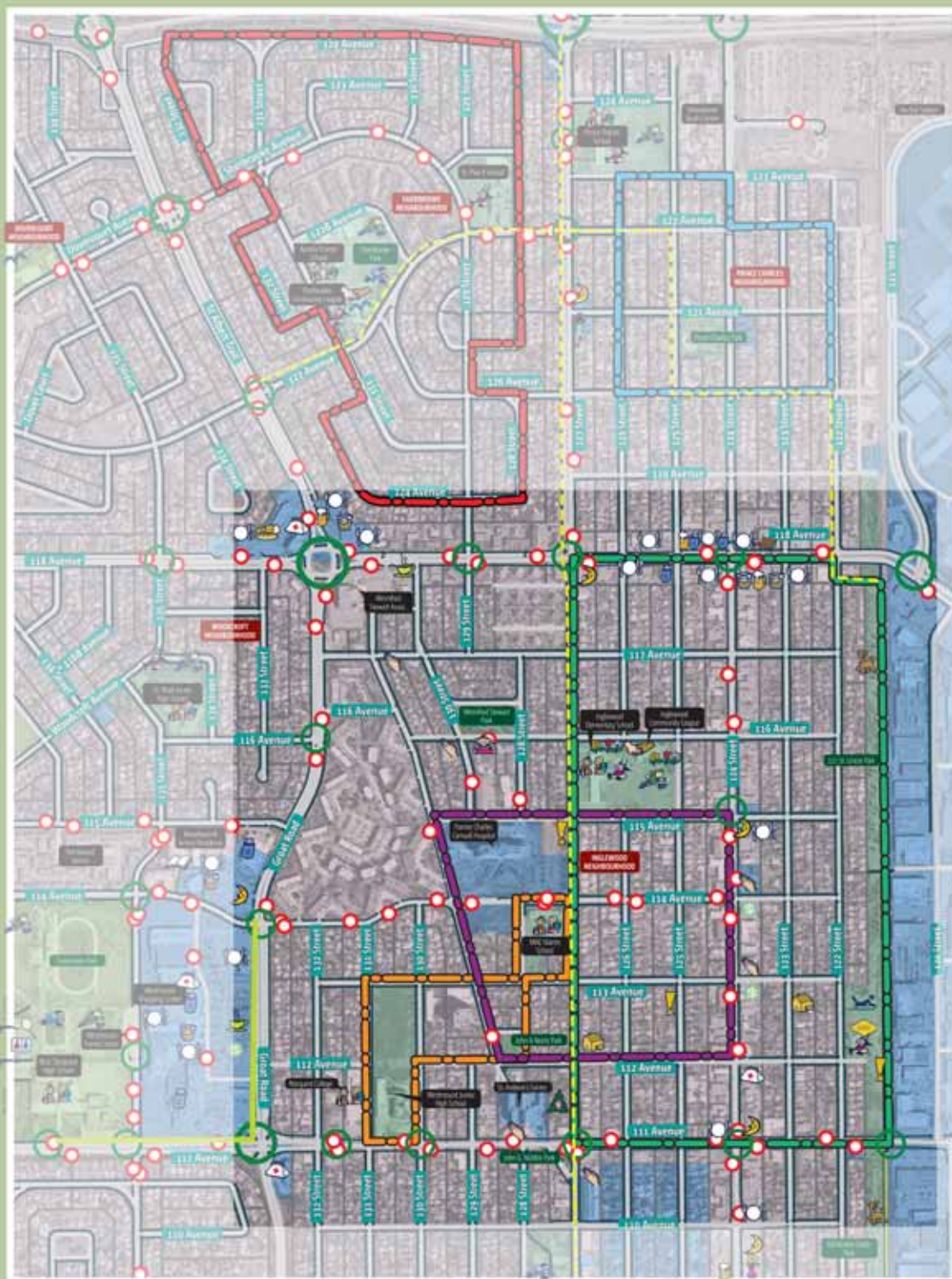
Part of what we heard during previous public engagement is that Inglewood has a lot to offer, and it's important to help people locate historical features, amenities, parks, and places that are true gems of the neighbourhood. We heard that commuters would like to be able to identify bike routes. We heard that signage is needed for the shared use path, dog park, and playground east of 122 Street. We heard that it would be helpful to share the locations and names of local parks, and what they offer. We want your input on the places that should be included on wayfinding signage in Inglewood.

Feedback instructions:

Please use a sticky note to name places that should be part of wayfinding signage and place it on the wayfinding map where it is located. **OR** if you see a comment that you agree with, just add a checkmark to it!



SHARE YOUR VOICE
SHAPE OUR CITY



Legend

- | | |
|------------------------|-------------------|
| Bakery | Place of Worship |
| Bank | Plaque |
| Childcare Centre | Playground |
| Coffee Shop | Point of Interest |
| Community Garden | Pub |
| Community League Hall | Public Washroom |
| Florist | Restaurant |
| Health Centre/Medical | Rest Spot |
| Heritage Home | School |
| Heritage/Memorial Tree | Skating Rink |
| Late Night Store | Sports Field |
| Library | Spray Deck |
| Liquor Store | Toboggan |
| Off-Leash Park | Tennis Court |
| Pharmacy | Yoga Studio |



Showcasing Heritage and Character

Part of Inglewood's Neighbourhood Renewal Vision is to reflect its diversity, as well as its connections to Indigenous heritage. To do this, people suggested that Inglewood would benefit from visual features, such as historical plaques and historical names in stamped concrete, that showcase the neighbourhood's heritage and character. We want your input on what you would like to see visually reflected in Inglewood and where it should be located.

Feedback instructions:

Please use a sticky note to tell us what you would like to see in Inglewood to reflect its heritage and character, and place it on the map where you would like to see it located.



SHARE YOUR VOICE
SHAPE OUR CITY

City-owned Outdoor Spaces

There are seven concepts being considered to update City-owned outdoor spaces in Inglewood.

As the City refines the seven concepts and looks at funding opportunities for each, it will be helpful to identify which areas people consider priorities for updates.

Please consider the concepts that you saw for the seven City-owned outdoor spaces and use stickers 1 – 7 to prioritize the order that you'd like to see updates made.

Outdoor Space or Concept	Ranking (1 – 7)
Linear Park (East of 122 Street between 111-118 Avenues)	
John A. Norris Park	
Winnifred Stewart Park	
Former Trolley Turn-Around Open Space (West side of 124 Street on the North side of 112 Avenue)	
Gateway Features	
Wayfinding Signage	
Showcasing Heritage and Character	

1 = First priority

2 = Second priority

3 = Third priority

4 = Fourth priority

5 = Fifth priority

6 = Sixth priority

7 = Seventh priority

SHARE YOUR VOICE
SHAPE OUR CITY

Edmonton