

# CIVIC PRECINCT SURFACE RENEWAL

WELCOME

**CIVIC PRECINCT SURFACE RENEWAL**

**OPEN HOUSE**

**OCTOBER 24, 2016**

**WE WANT TO HEAR FROM YOU!**

**REVIEW THE INFORMATION**

**ASK QUESTIONS**

**PROVIDE COMMENTS ON BOARD**

**COMPLETE SURVEY**

**PAPER OR ON-LINE ([WWW.EDMONTON.CA/CIVICPRECINCT](http://WWW.EDMONTON.CA/CIVICPRECINCT))**

**CALL 311 OR VISIT THE WEBSITE FOR MORE INFORMATION  
([WWW.EDMONTON.CA/CIVICPRECINCT](http://WWW.EDMONTON.CA/CIVICPRECINCT))**

# CIVIC PRECINCT SURFACE RENEWAL

## DID YOU KNOW?

EDMONTON'S CIVIC PRECINCT IS THE AREA ENCOMPASSING CITY HALL AND CITY HALL PLAZA, SIR WINSTON CHURCHILL SQUARE, STANLEY A. MILNER LIBRARY AND CENTENNIAL PLAZA.

THE APPROXIMATE AREA OF THE CIVIC PRECINCT IS 4.9 HECTARES. THAT'S JUST OVER 8 CFL FOOTBALL FIELDS COMBINED!

OVER 1 MILLION PEOPLE VISIT THE CIVIC PRECINCT EVERY YEAR.

CITY HALL OPENED IN 1992, INCLUDING THE CITY HALL PLAZA AND FOUNTAIN. SIR WINSTON CHURCHILL SQUARE WAS SELECTED AS EDMONTON'S CENTENNIAL LEGACY PROJECT, WITH A REDESIGN OF THE PARK COMPLETED IN 2004 TO CELEBRATE EDMONTON'S CENTENARY.

CHURCHILL SQUARE IS ACTIVELY ANIMATED ON AVERAGE 311 DAYS/YEAR.

102A AVENUE (BETWEEN 100 STREET AND 99 STREET) WAS OFFICIALLY CLOSED IN 2009 AND LATER REZONED AS PARKLAND.

IN 2016, THERE WERE 160 FESTIVALS BOOKED IN THE CIVIC PRECINCT.

20,000 PEOPLE CELEBRATE NEW YEAR'S EVE IN THE CIVIC PRECINCT.

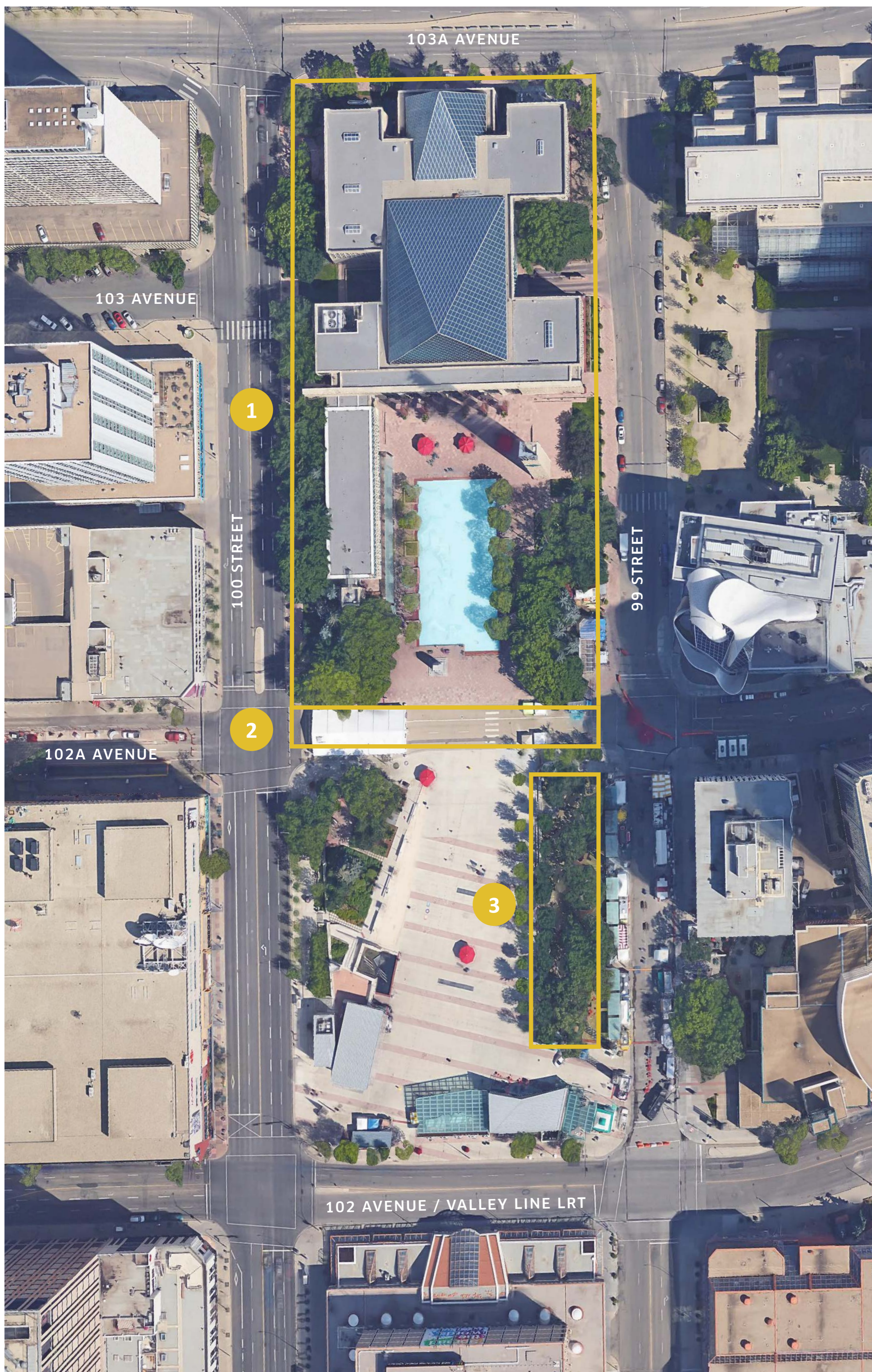
OVER 54,000 VISITORS TO THE CITY HALL FOUNTAIN/WADING POOL A YEAR AND 20,000 VISITORS TO THE CITY HALL SKATING RINK.

CITY OPERATIONS WORKS YEAR ROUND TO MAINTAIN THE AREA:

- *THE TURF IN THE EAST GARDENS IS REPLACED EVERY YEAR DUE TO HIGH PEDESTRIAN TRAFFIC AND USUALLY FENCED FROM APRIL TO OCTOBER TO REDUCE IMPACT.*
- *THE PAVERS AROUND CITY HALL WERE BUILT ON A BASE THAT IS BREAKING DOWN, WHICH IS CAUSING THEM TO SHIFT AND SETTLE.*
- *THE PAVERS ARE CUSTOM MANUFACTURED FOR THE CIVIC PRECINCT, WHICH INCREASES THE YEARLY COST.*
- *THE TREES ON 100 STREET DO NOT HAVE ENOUGH SOIL TO SUSTAIN THEIR HEALTH, RESULTING IN INCREASED MAINTENANCE AND REPLACEMENT REQUIREMENTS.*

# CIVIC PRECINCT SURFACE RENEWAL

## PROJECT OVERVIEW



### 1 CITY HALL PLAZA

#### OBJECTIVES:

- DECREASE OVERALL MAINTENANCE COSTS.
- MAINTAIN LOOK AND FEEL OF THE SPACE.

### 2 102A AVENUE INTEGRATION

#### OBJECTIVES:

- REMOVE ROAD AND IMPROVE APPEARANCE AS A PEDESTRIAN ZONE.
- PROVIDE A CONSISTENT SURFACE.
- ENHANCE PEDESTRIAN ACCESSIBILITY.
- SUPPORT CURRENT ACTIVITIES THROUGH BETTER ACCESS TO SITE UTILITIES.

### 3 EAST GARDEN

#### OBJECTIVES:

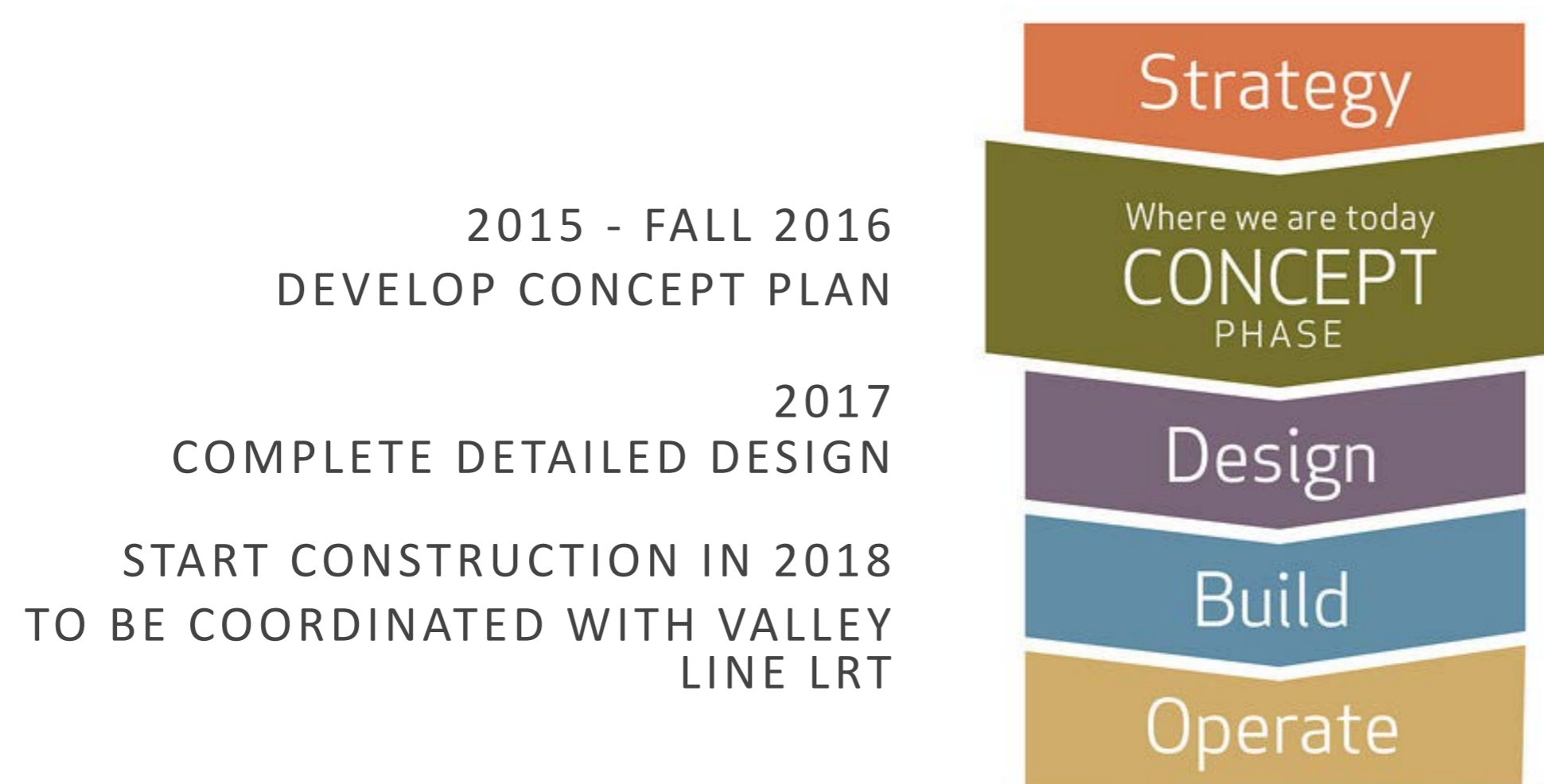
- INSTALL RESILIENT SURFACING TO REDUCE MAINTENANCE COSTS.
- SUPPORT HIGH-INTENSITY USE.
- ENSURE HEALTH OF EXISTING TREE CANOPY.

### BUDGET

- THE PRELIMINARY PROJECT COST WILL BE DETERMINED AT THE END OF THE CONCEPT PHASE. THIS COST WILL CONSIDER AN IMPLEMENTATION PLAN BASED ON PRIORITIES AND AVAILABLE FUNDING.

# CIVIC PRECINCT SURFACE RENEWAL

## PROJECT SCHEDULE & ENGAGEMENT



## STAKEHOLDER ENGAGEMENT

### INFORMATION GATHERING (2015 - SPRING 2016)

- REVIEW PAST REPORTS, DESIGNS AND PLANS
- MEETINGS, ON-SITE "WALKSHOPS" AND PRELIMINARY SURVEYS WITH KEY STAKEHOLDERS.

### EXPLORING OPTIONS (SUMMER/FALL 2016)

- PRELIMINARY CONCEPT DESIGN DEVELOPED FROM INFORMATION STAGE
  - REFINE CONCEPTS WITH KEY STAKEHOLDERS

### SETTING THE DIRECTION (FALL 2016)

- SHARE PREFERRED CONCEPT OPTIONS AND RECEIVE FEEDBACK FROM STAKEHOLDERS
  - PUBLIC OPEN HOUSE
  - REFINE AND CONFIRM CONCEPT PLAN

## STAKEHOLDERS

- COMMUNITY ORGANIZATIONS WHO HOST MULTI-DAY FESTIVALS AND EVENTS IN THE CIVIC PRECINCT AS WELL AS BUSINESSES THAT 'LIVE' ON THE SQUARE.
- PUBLIC, FESTIVAL AND EVENT ORGANIZERS, BUSINESSES, COMMUNITY ORGANIZATIONS, AND PARTICIPANTS.
  - CITY OF EDMONTON OPERATIONS AND MAINTENANCE STAFF.
    - SUSTAINABLE DEVELOPMENT

## DESIGN PHASE

- STAKEHOLDERS WILL BE RE-ENGAGED AT KEY DECISION MILESTONES.

# CIVIC PRECINCT SURFACE RENEWAL

## PROJECT GOALS

**SUPPORT A VIBRANT, FOUR-SEASON SPACE THAT ANIMATES THE CIVIC CENTRE.**



**THE SPACE MUST ACCOMMODATE LARGE EVENTS WHILE REMAINING EDMONTON'S MOST VIBRANT AND RELEVANT PUBLIC OPEN SPACE FOR ALL USERS.**



**PRIORITIZE PEDESTRIAN ACTIVITY BY CREATING A POROUS AND PERMEABLE CIVIC PRECINCT THAT ALLOWS UNOBSTRUCTED MOVEMENT AND COMFORTABLE SPACES.**



**ENABLE ALL EDMONTONIANS TO ENJOY THE SPACE BY CREATING AN ACCESSIBLE AND BARRIER-FREE PUBLIC SPACE.**



**THE MATERIALITY AND EXECUTION OF THE IMPROVEMENTS MUST BE BEFITTING OF A DIGNIFIED CIVIC FACILITY - DURABLE, TIMELESS AND BEAUTIFUL.**



**INTEGRATE 102A AVENUE TO CREATE ONE CONTIGUOUS PUBLIC OPEN SPACE. UTILIZE LANDSCAPING, SURFACING, FURNISHINGS AND ARCHITECTURAL TREATMENTS TO KNIT THE SPACE TOGETHER.**



**PROVIDE MINOR UTILITY IMPROVEMENTS WITHIN THE SCOPE AREAS TO IMPROVE THE FUNCTIONALITY OF THE SPACE FOR LARGER EVENTS.**



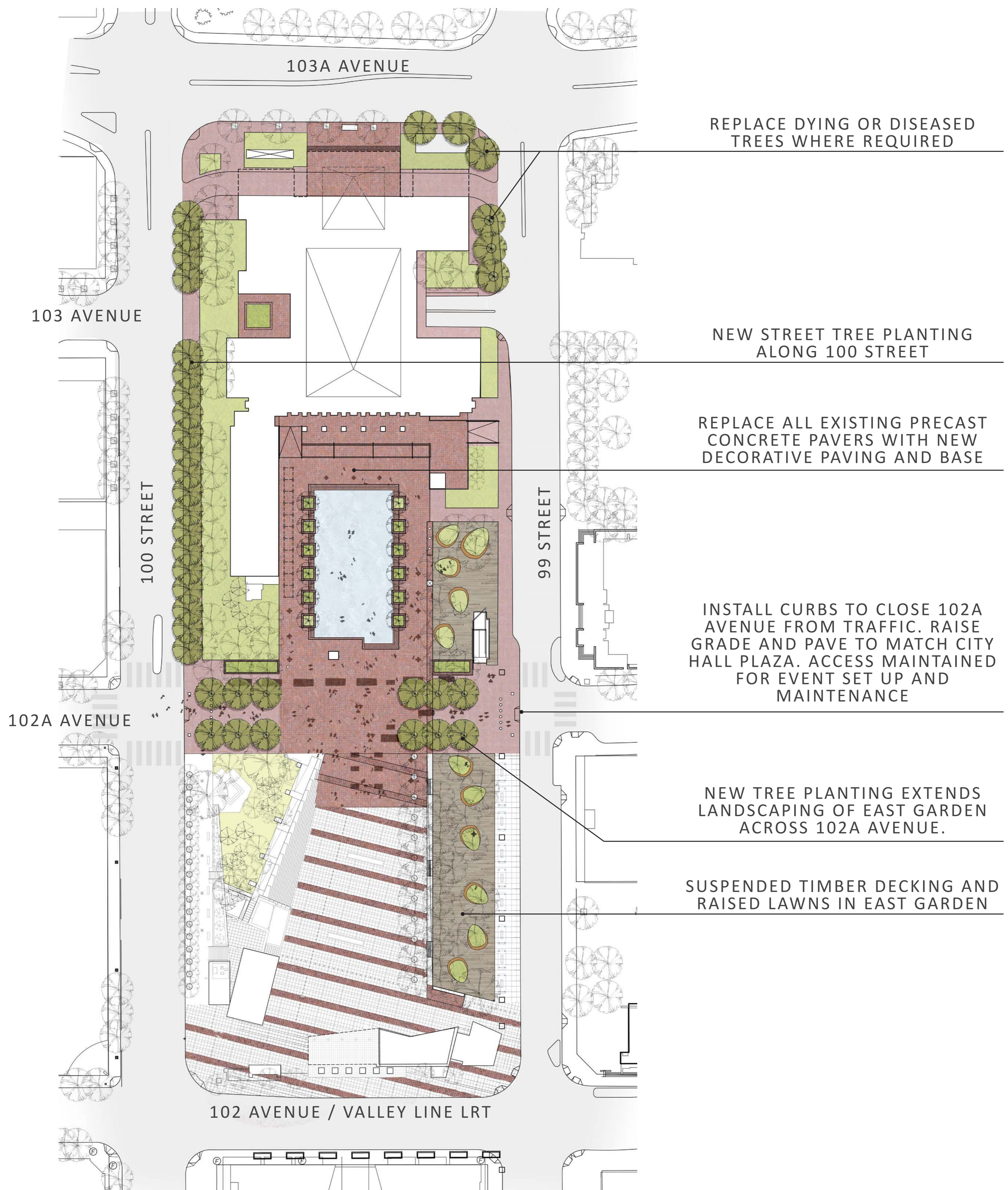
**PROTECT THE LONG-TERM HEALTH AND WELL-BEING OF THE EXISTING MATURE TREES ON SITE. PROVIDE HIGH-QUALITY GROWING CONDITIONS FOR NEW TREES TO FACILITATE RAPID GROWTH AND LONGEVITY.**



**FOCUS ON MAKING A SUSTAINABLE SITE BY PROVIDING INFRASTRUCTURE THAT REQUIRES LESS FREQUENT MAINTENANCE AND REPAIR.**

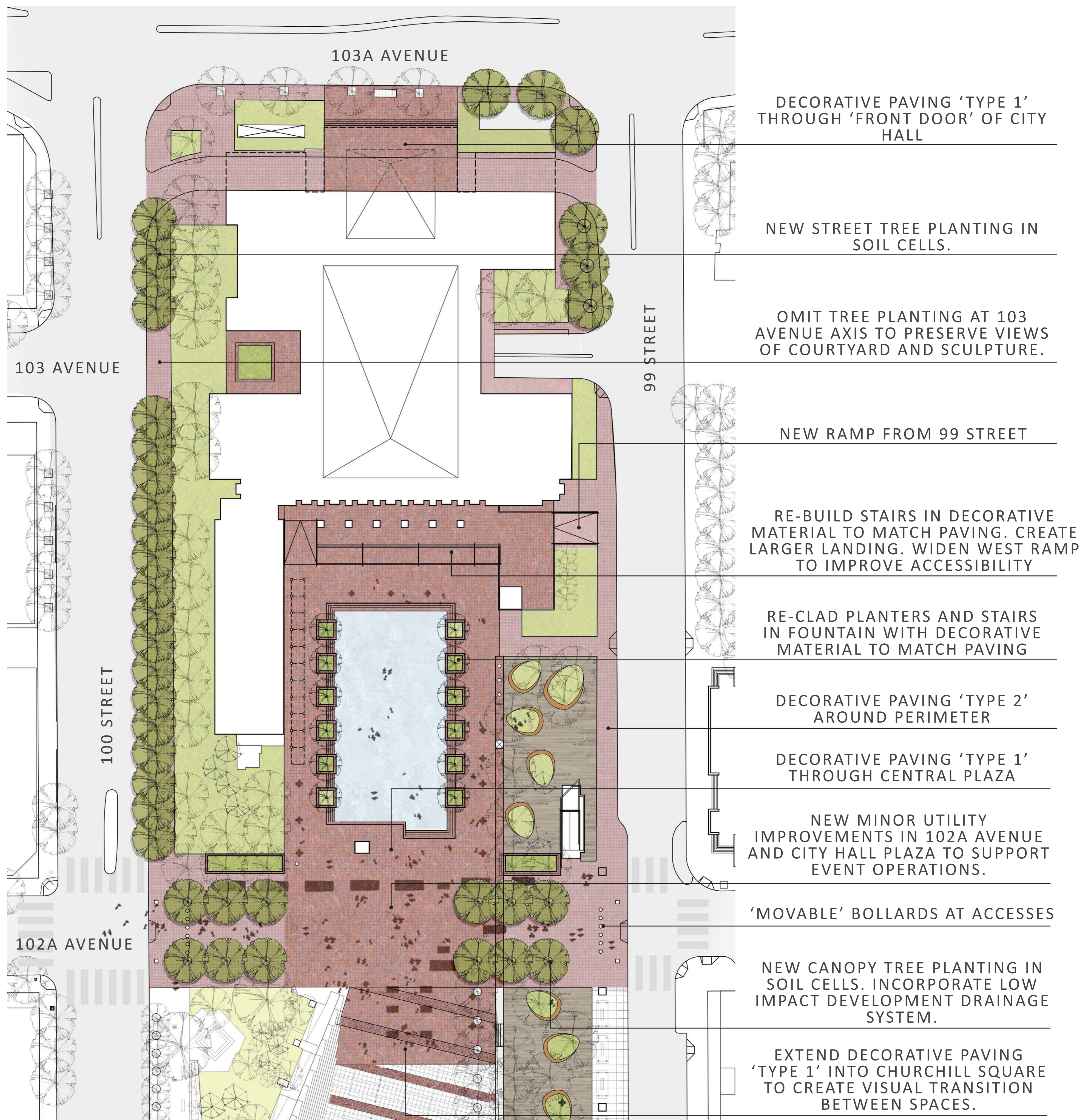
# CIVIC PRECINCT SURFACE RENEWAL

## SITE CONCEPT PLAN



# CIVIC PRECINCT SURFACE RENEWAL

## CITY HALL PLAZA RESURFACING AND 102A AVENUE INTEGRATION



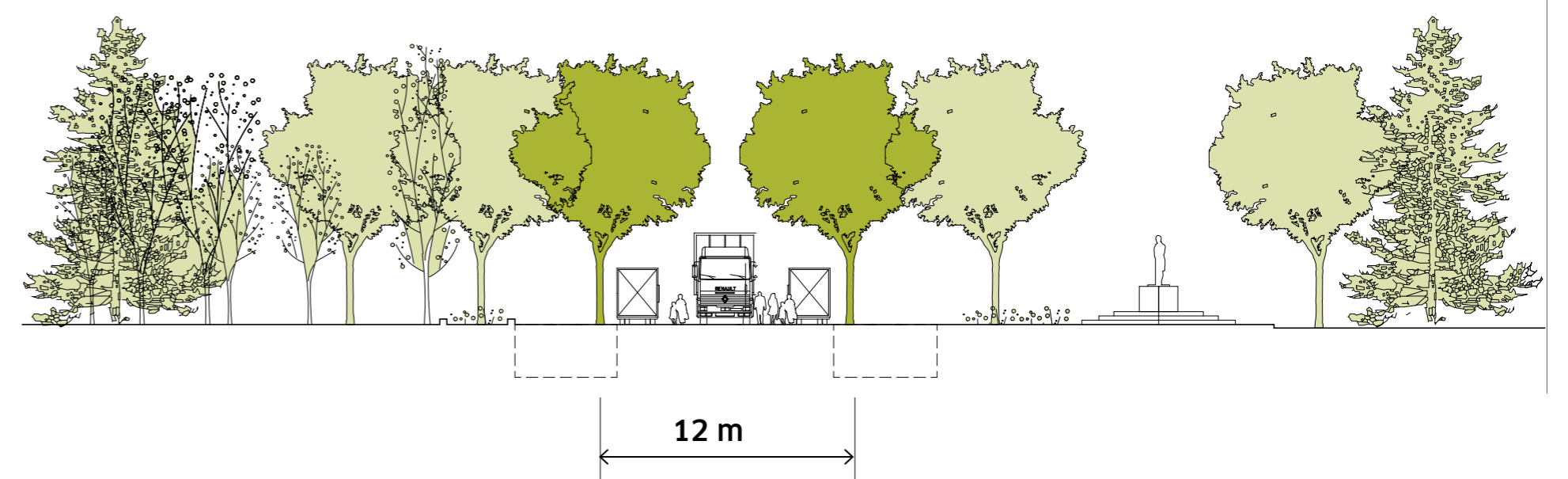
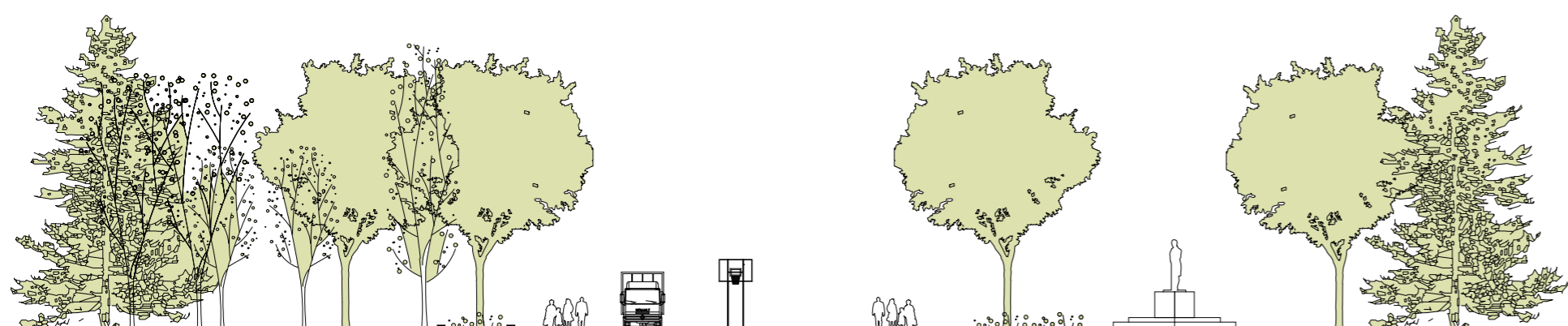
# CIVIC PRECINCT SURFACE RENEWAL

## 102A AVENUE INTEGRATION

EXISTING CONDITIONS LOOKING EAST



PROPOSED IMPROVEMENTS



**REMOVE CURBS AND BRING GRADE OF ROAD UP TO MATCH CITY HALL PLAZA AND CHURCHILL SQUARE TO IMPROVE ACCESSIBILITY.**

**RE-PAVE SURFACE IN DECORATIVE PAVING TO MATCH CITY HALL PLAZA AND ADJACENT SIDEWALKS - IMPROVING APPEARANCE AND CONTINUITY.**

**PLANT NEW CANOPY TREES IN STRUCTURAL SOIL CELLS - LARGE SOIL VOLUMES BELOW THE PAVED SURFACE - TO GROW LARGE, HEALTHY TREES.**

**TREES SERVE TO CREATE A CONTIGUOUS GREEN SPACE ACROSS 102A AVENUE, IMPROVE HUMAN SCALE AND DEFINE AS A PEDESTRIAN SPACE.**

**INCORPORATE 'LOW IMPACT DEVELOPMENT' DRAINAGE SYSTEM TO DRAIN RUN-OFF THROUGH PLANTING SOILS - CLEANING WATER AND REDUCING AMOUNT OF RUN-OFF THAT GOES INTO THE COMBINED SEWER NETWORK.**



# CIVIC PRECINCT SURFACE RENEWAL

## EAST GARDEN

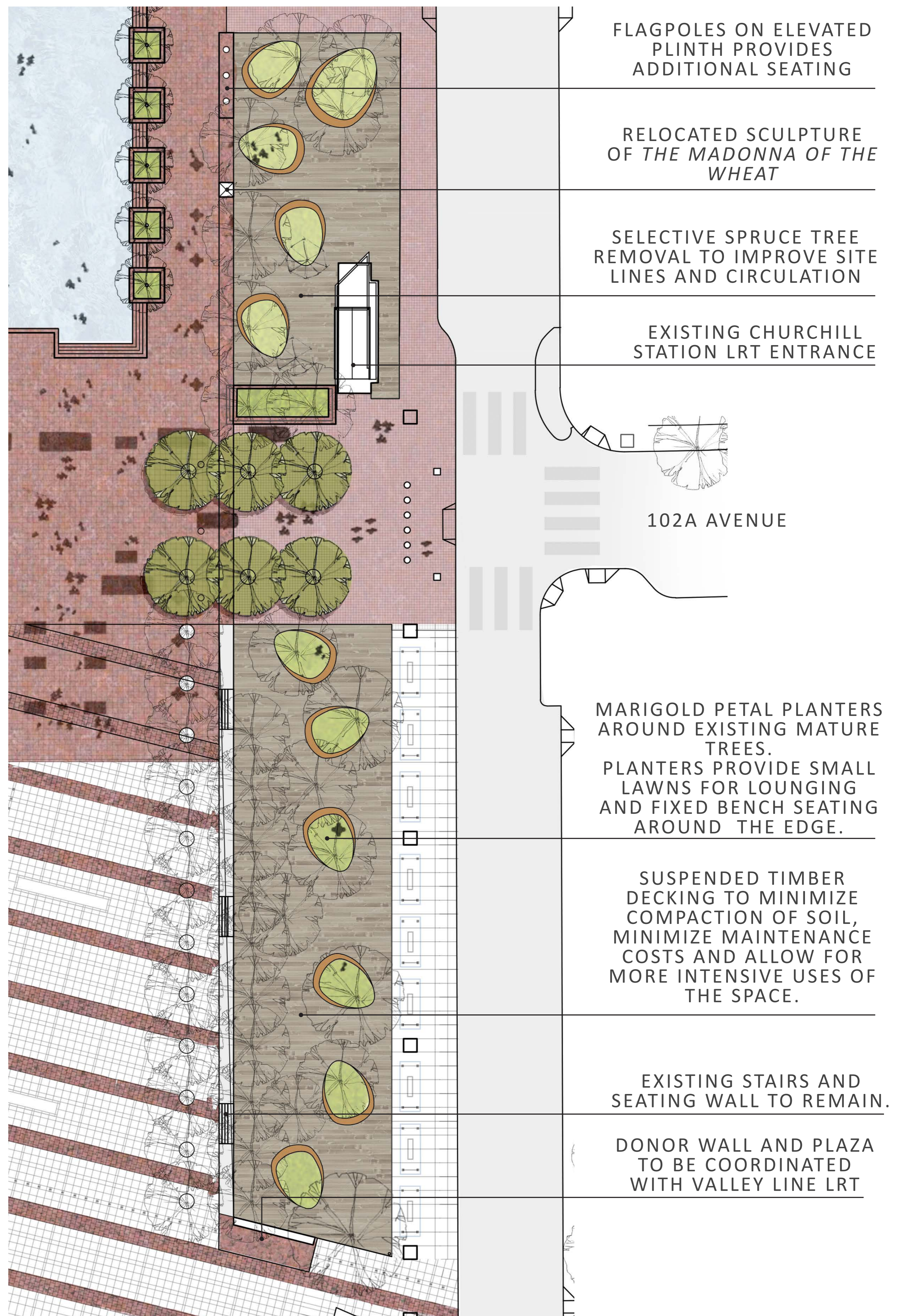


### CONCEPT IMAGE

THE MARIGOLD IS EDMONTON'S OFFICIAL FLOWER. IT SYMBOLIZES SUNNY ALBERTA AND EDMONTON'S ROLE IN THE KLONDIKE GOLD RUSH OF THE 1890'S.

THE PETALS SCATTERED ACROSS THE WEST GARDEN SYMBOLIZE THE REMNANTS OF A LANDSCAPE THAT IS PRESSURED BY THE INTENSIVE USES OF AN INCREASINGLY VIBRANT AND ACTIVE DOWNTOWN CORE.

THE ORGANIC FORMS SIT IN CONTRAST TO THE CLASSICAL PLAN OF CITY HALL SQUARE AND THE HARD LINES OF CHURCHILL SQUARE AND SURROUNDING STREETS, BRINGING A MOMENT OF LEVITY INTO AN OTHERWISE FORMAL AND DIGNIFIED SPACE.



# CIVIC PRECINCT SURFACE RENEWAL

## EAST GARDEN

EXISTING CONDITIONS LOOKING SOUTHEAST



PROPOSED IMPROVEMENTS



REPLACE SOD WITH TIMBER DECKING TO PROVIDE ALL-WEATHER SURFACE AND REDUCE YEARLY MAINTENANCE COSTS.



SUSPENDED DECKING MINIMIZES SOIL COMPACTION WHICH INCREASES LONG-TERM TREE HEALTH.



PROVIDE 'MARIGOLD PETAL' PLANTERS WITH SOD TO ALLOW SITTING/LOUNGING AND PRESERVE 'GREEN' IN THE GARDEN.



SPACE BETWEEN TREES AND PLANTERS ALLOWS FOR DAY-TO-DAY AND HIGH-INTENSITY USES SUCH AS MOVABLE FURNITURE, TENTS, TABLES, ETC..



INCORPORATE IRRIGATION SYSTEM TO WATER TREES AND LAWN AREAS.



'MARIGOLD PETAL' PLANTERS



'MARIGOLD PETAL' PLANTERS

# CIVIC PRECINCT SURFACE RENEWAL

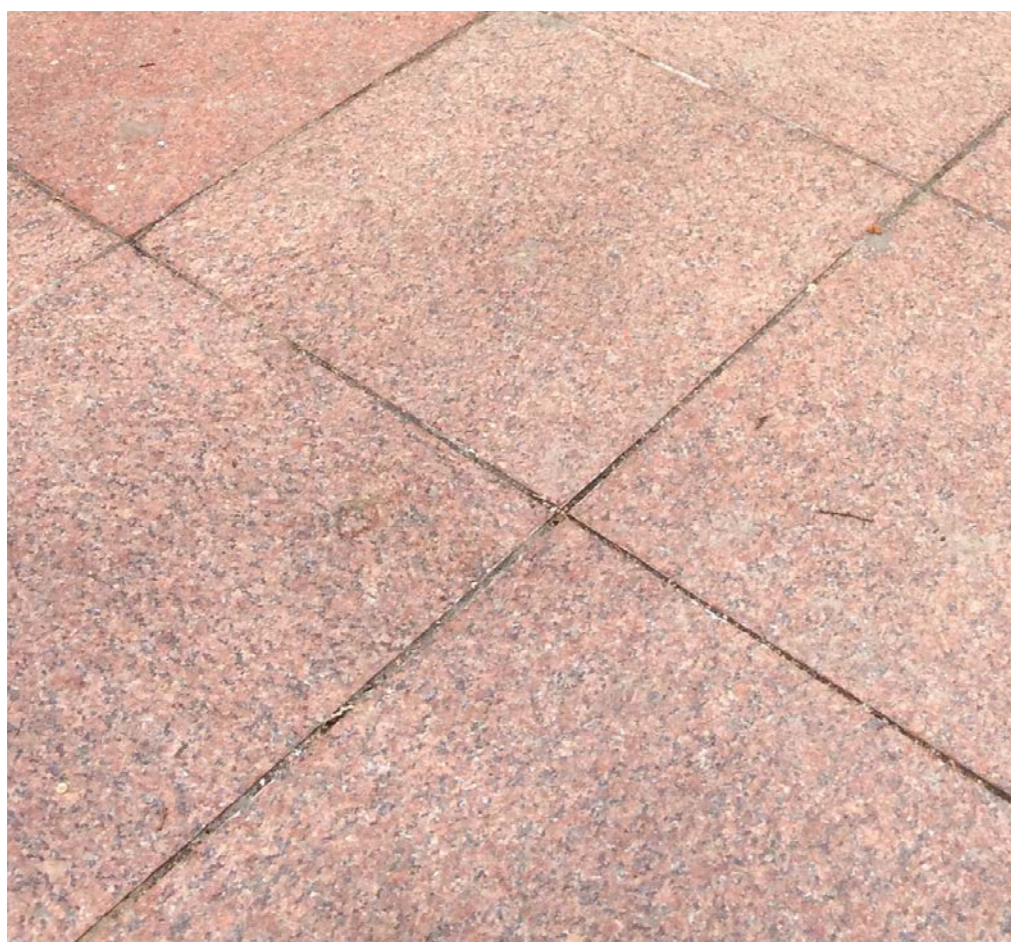
## SURFACE MATERIALS

### CITY HALL PLAZA & 102A AVENUE INTEGRATION PAVING

#### OBJECTIVES:

- DECREASE OVERALL MAINTENANCE COSTS.
- MAINTAIN LOOK AND FEEL OF THE SPACE.
- ALLOW FOR FLEXIBILITY IN PROGRAMMING
- IMPROVE SAFETY AND ACCESSIBILITY BY MINIMIZING SHIFTING, MOVING OR CRACKING AND PROVIDING A SLIP RESISTANT SURFACE.

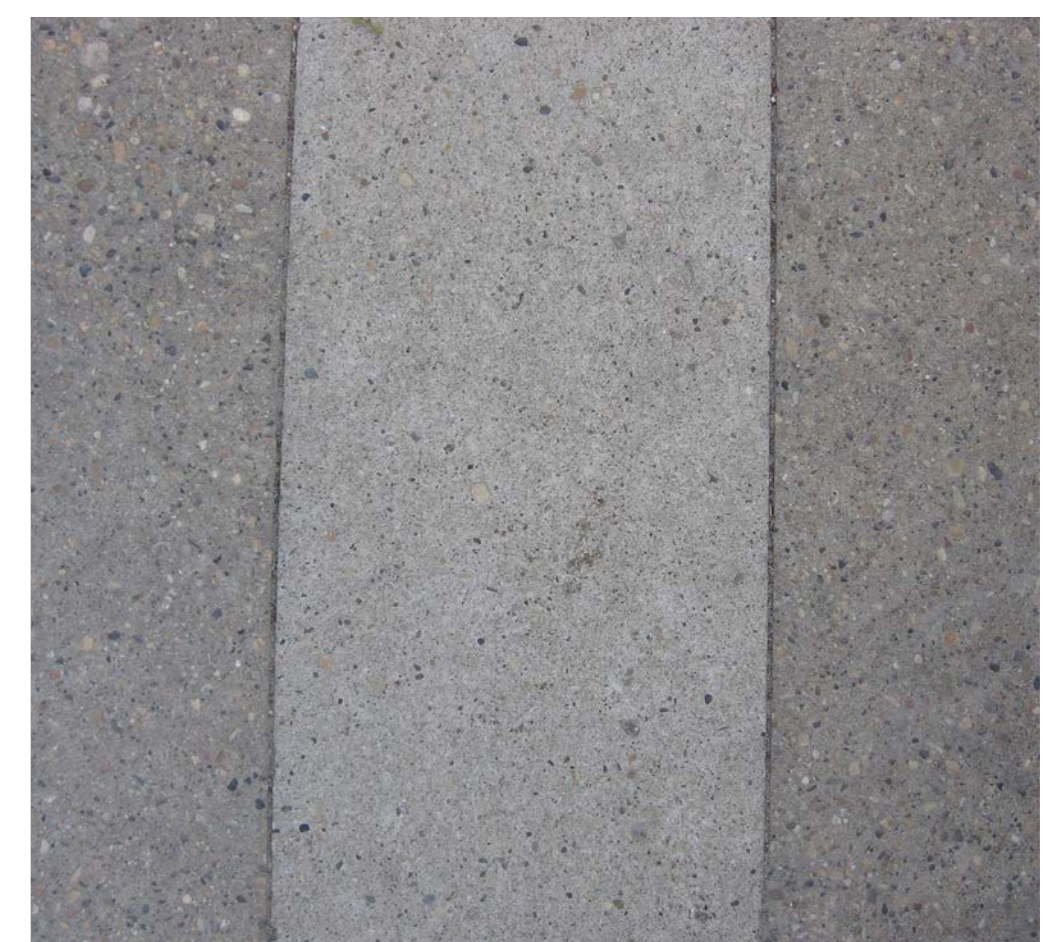
#### MATERIALS UNDER CONSIDERATION



RED GRANITE PAVERS



PRECAST CONCRETE PAVERS



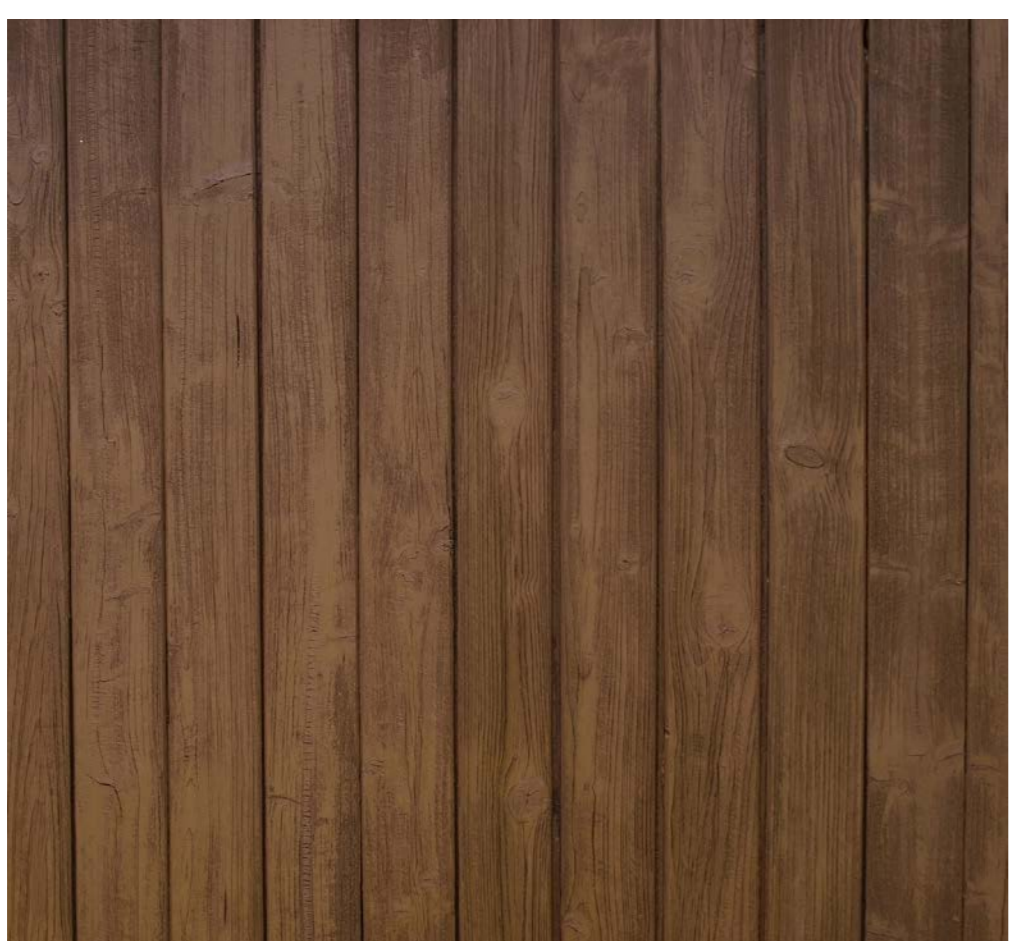
CAST-IN-PLACE CONCRETE

### EAST GARDEN

#### OBJECTIVES:

- DECREASE OVERALL MAINTENANCE COSTS BY ELIMINATING NEED FOR YEARLY SOD REPLACEMENT.
- PROVIDE AN ALL-WEATHER SURFACE THAT ALLOWS MORE INTENSIVE USE AND PROGRAMMING.
- IMPROVE GROWING CONDITIONS FOR EXISTING TREES BY PROTECTING SOIL FROM COMPACTION AND ACCIDENTAL DAMAGE.
- PRESERVE SOME 'GREEN SPACE' AND ALLOW FOR SEATING, LOUNGING AND PASSIVE USES.

#### PROPOSED MATERIAL



IPE TIMBER

- TIMBER PROVIDES A 'WARM' SURFACE THAT IS APPROPRIATE FOR PASSIVE AREAS WITH A LANDSCAPE CHARACTER - LIKE A BACK YARD DECK.
- LOWER INITIAL COST THAN OTHER MORE DURABLE SURFACES.
- REQUIRES MORE MAINTENANCE AND REPLACEMENT THAN OTHER MORE DURABLE SURFACES
- IS SIMPLER TO INSTALL AROUND EXISTING SURFACES AND TREES AND IS SIMPLER TO OBTAIN REPLACEMENT MATERIAL.