

PROJECT VISION AND IMPORTANT ELEMENTS

Earlier this year, public engagement participants helped refine a project vision and set of important elements to guide the City's work in the neighbourhood. The final vision and important elements are:

VISION:

Central McDougall is a safe neighbourhood. People feel comfortable walking and crossing roads, driving routes focus on providing access to local organizations and gathering spaces, and everyone has opportunities to make use of outdoor parks and green spaces.

IMPORTANT ELEMENTS:

- Safety for people walking in the neighbourhood, with an emphasis on providing good lighting, accessible design and design features, and safe crossings in high pedestrian areas.
- Driving routes that help motorists and public transit access local amenities while also limiting the amount of shortcutting and speeding in the neighbourhood.
- Outdoor spaces supporting active living and people of all backgrounds to gather and enjoy.
- Signs that helps people navigate their ways, locate and learn about historic and cultural sites.
- Mature trees and flowers, public art, and community gardens that help to bring people together and build community pride.

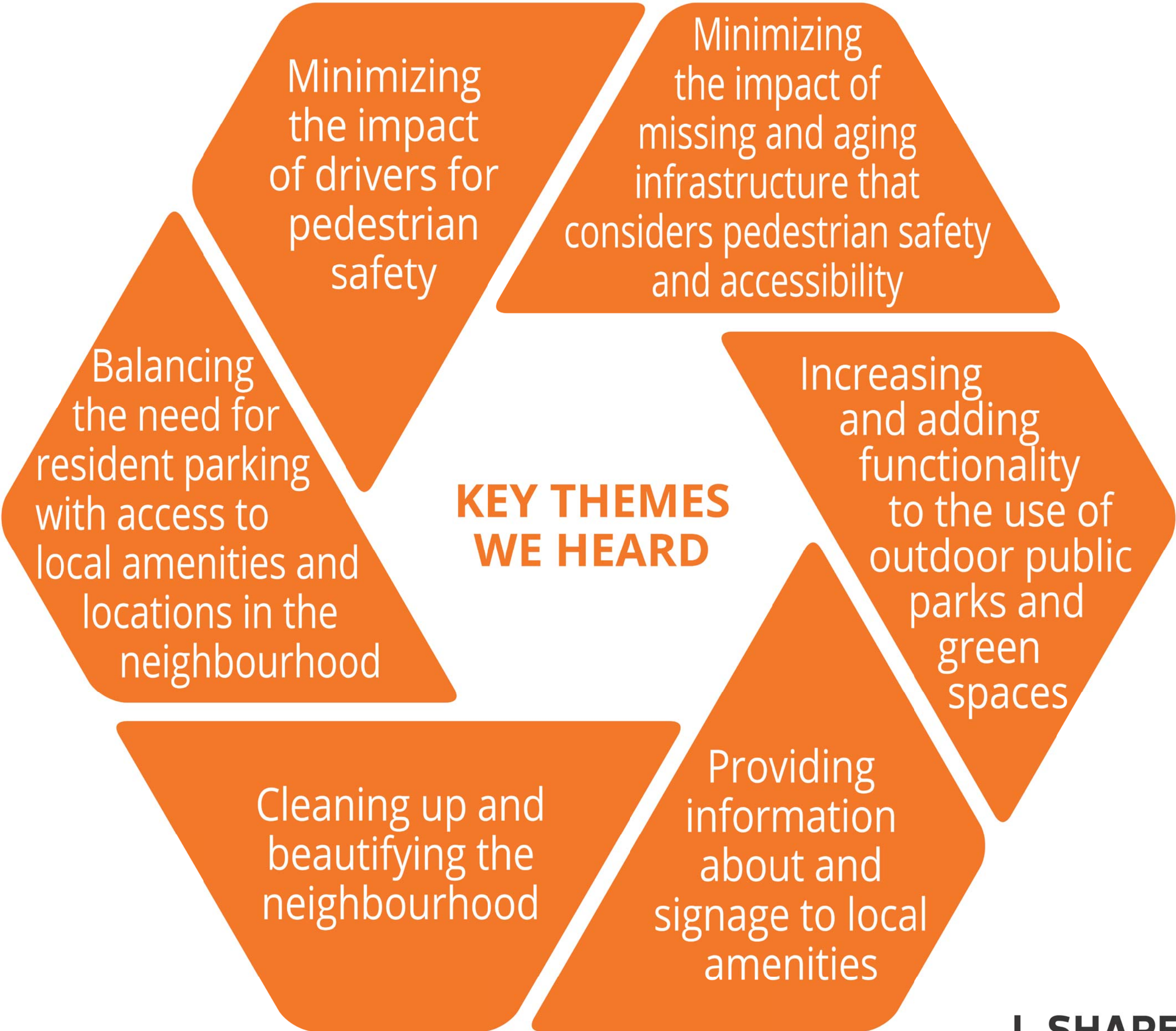
WHAT WE HEARD AS STRENGTHS & WHAT NEEDS ATTENTION

In April 2018, public engagement participants advised the City on what is the strengths of the Central McDougall neighbourhood and what needs attention:

The **strengths** we heard cover six themes:



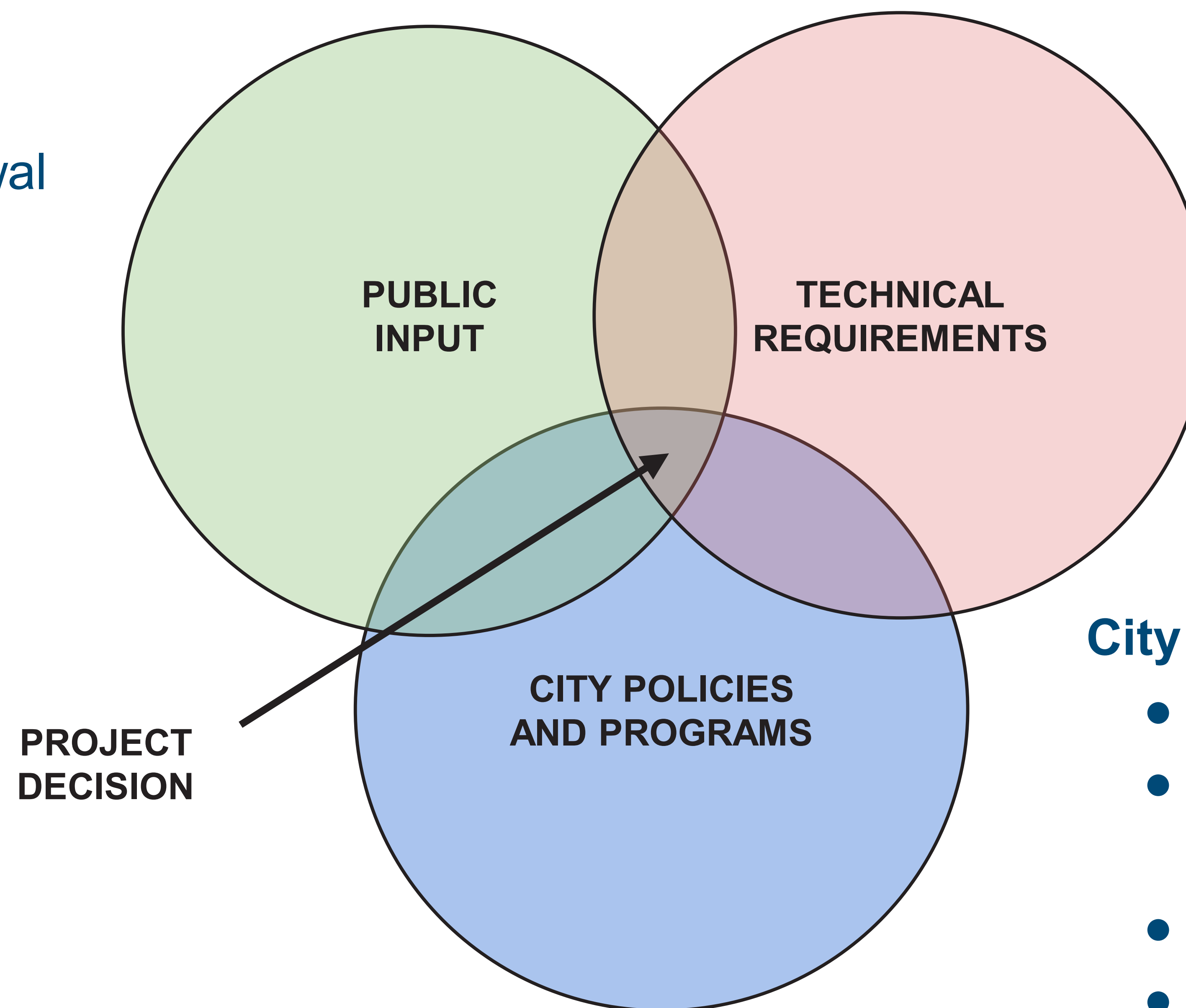
The **issues and opportunities** we heard cover six themes:



The City considers the following in its decision making:

Public Engagement Input:

- **Refine** Neighbourhood Renewal vision and important elements
- **Advise** on neighbourhood assets, opportunities and priorities
- **Refine** infrastructure options
- **Advise** on preliminary design
- **Decide** on sidewalk and/or decorative light local improvement



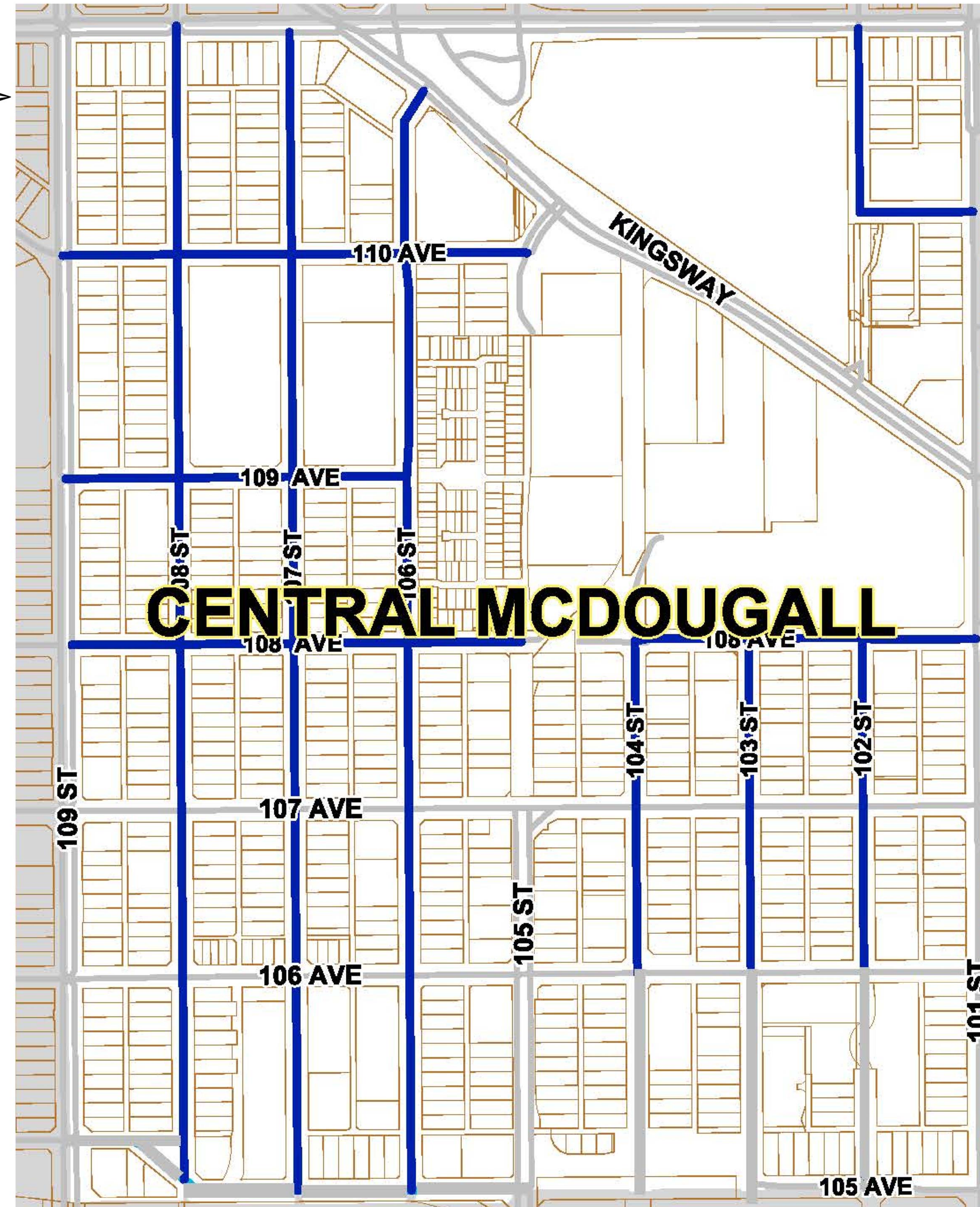
Technical Requirements:

- Infrastructure Assessments
- Complete Streets Design and Construction Standards
- Universal Design
- Crime Prevention Through Environmental Design
- Urban Design Framework

City Policies and Programs:

- City's Strategic Plans - The "Ways"
- Active Transportation Policy (Sidewalk Strategy)
- Local Improvement Policy
- Public Engagement Policy
- Breathe - Green Network Strategy
- Winter City Guidelines
- Vision Zero

LOCAL ROADS IN SCOPE



Local Roads

SHARE YOUR VOICE
SHAPE OUR CITY



SHARE YOUR VOICE
SHAPE OUR CITY

Edmonton

CENTRAL MCDOUGALL NEIGHBOURHOOD RENEWAL PUBLIC ENGAGEMENT TIMELINE

