



Calder Neighbourhood Renewal

Exploring Opportunities: Walking Tour

September 14, 2019



Edmonton

Agenda

- Sign in and group assignments: 3:00 - 3:15 p.m.
- Welcome and intro: 3:15 - 3:30 p.m.
- Walk: 3:30 - 5:00 p.m.
- Dinner: 5:00 - 5:30 p.m.

Building Great Neighbourhoods

Working together to make the most of your neighbourhood.

This is your city and your neighbourhood. We want to understand how you experience your neighbourhood and ask for input on what we might do to make it better. We will work with you on the renewal of roads, sidewalks, streetlights, park spaces, and discuss other opportunities to enhance how people interact with the Calder neighbourhood. We will be open and transparent about how your input is used. Let's make the most out of your neighbourhood.

Calder Scope - What is Included

Upgrades to neighbourhood infrastructure including:

- Local and Collector Roads
- Sidewalks and Sidewalk Connections
- Curbs and Gutters
- Standard Galvanized Street Lights

Other upgrades could include:

- Connections that help you walk, bike and move around your neighbourhood
- Improvements to green spaces and parks
- Solutions to neighbourhood traffic issues
- Coordination with other projects happening in the neighbourhood
- Decorative street lights if the neighbourhood supports a local improvement

Calder Neighbourhood Renewal



Calder Scope - What is NOT Included

The following are not included in the neighbourhood infrastructure upgrades:

- Arterial Roads (i.e., 127 Street)
- Alley Repairs
- Development or redevelopment on land not owned by the City
- Maintenance Issues (Snow Clearing / Lawn Mowing)
- Utility Work (is coordinated prior to Renewal)



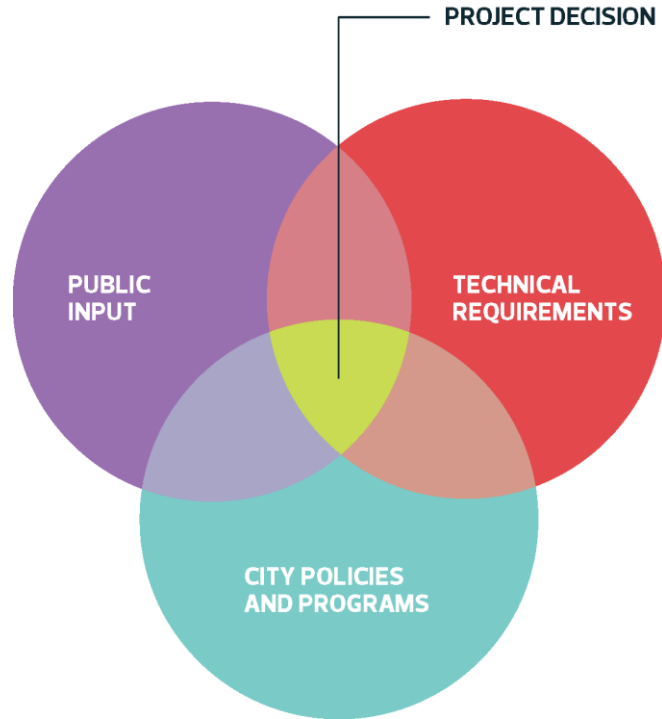
Public Engagement

Edmonton

Our Definition of Engagement

Public Engagement creates opportunities for people to contribute to decision making by City Council and Administration about the City's policies, programs, projects, and services, and communicates how public input is collected and used.

Decision Making Process



Public Engagement Spectrum



Building Great Neighbourhoods Public Engagement Road Map



LEGEND

Public Engagement and Communications Opportunities

Concept Phase

Design Phase

Build Phase

Operate Phase

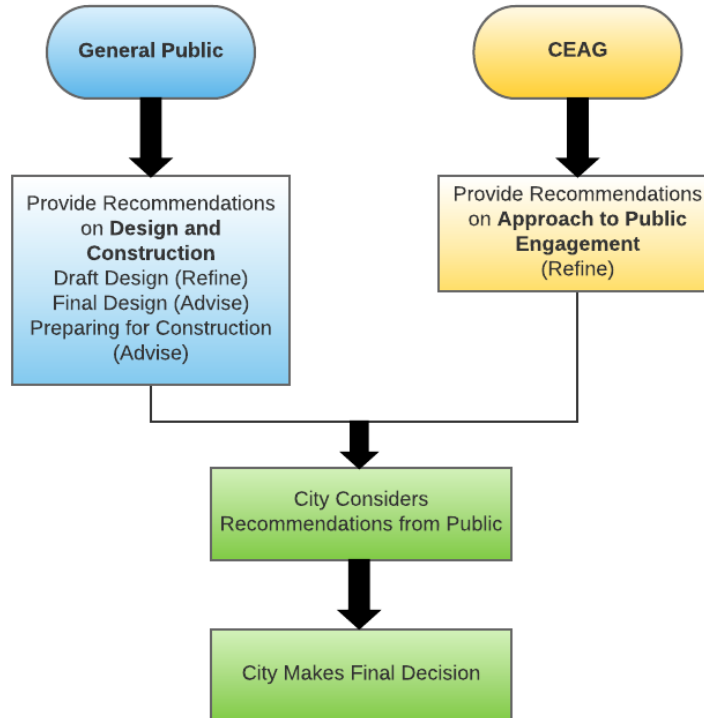
Edmonton

Community Engagement Advisory Group (CEAG)

Purpose of Community Engagement Advisory Group

- To **adjust** and **adapt** the project's draft public engagement plan and support initiatives for public engagement to reflect the unique needs, interests and readiness of Calder community.

Roles in Decision-Making





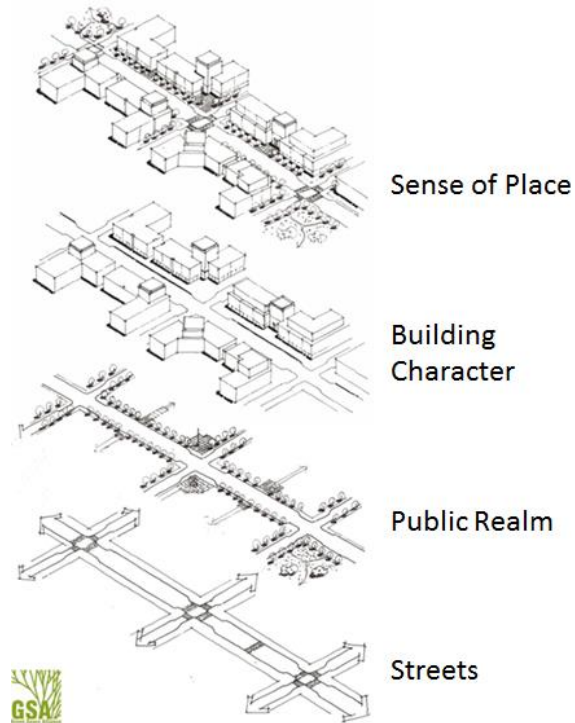
Urban Design

Edmonton

Urban Design - What is it?

Key Components

- Public Area
 - Streets, Open Spaces
- Private Area
 - Private Buildings
- Public/Private Interface

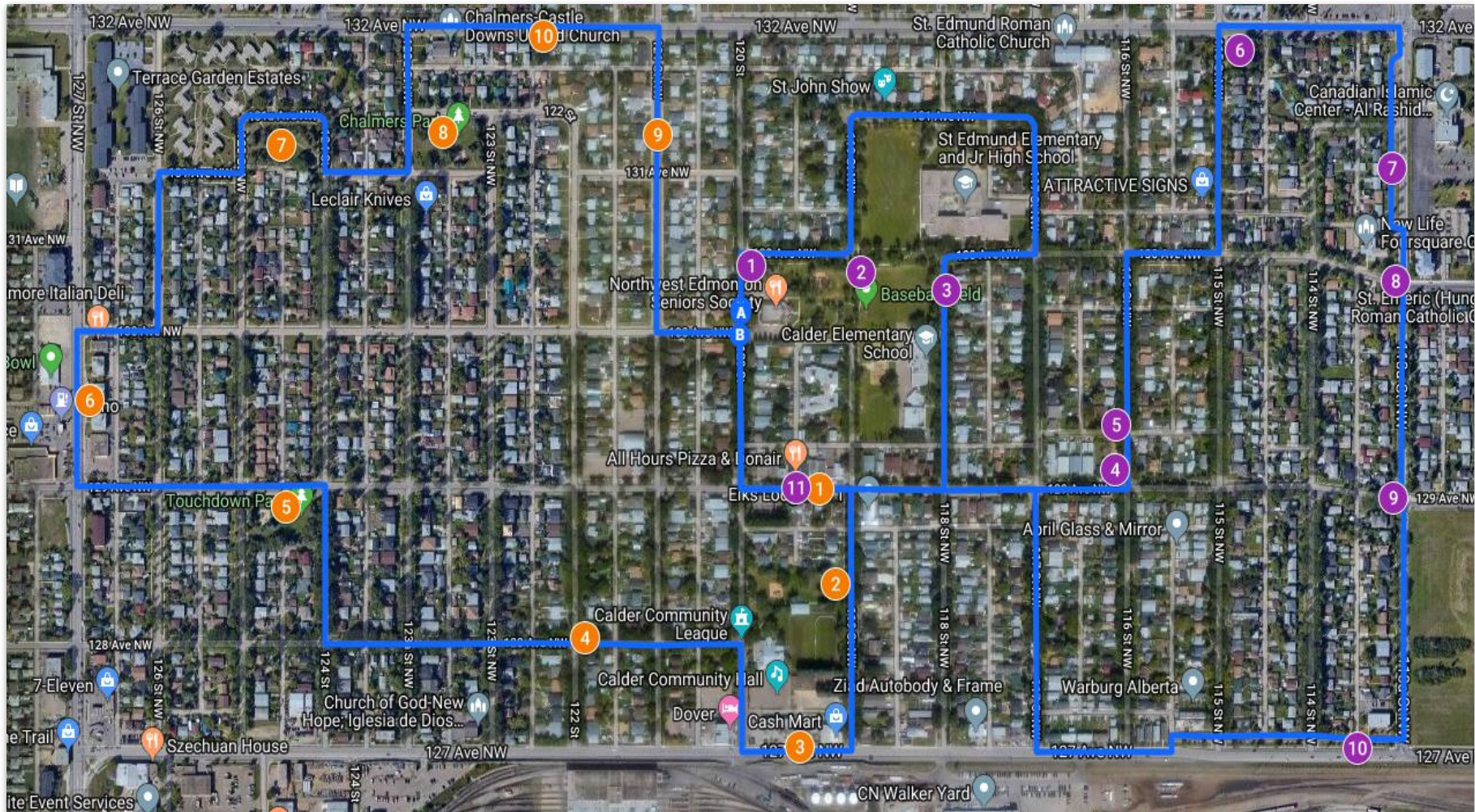


Urban Design - Potential Project Types

- Key intersections
- Transit zones
- School drop off zones
- Parks and open spaces
- Areas around places of worship
- Areas around medium density residential
- Pedestrian connectivity
- Active transportation
- Safety (CPTED)

Walking Routes

- Stay with your leader
- Openly and respectfully discuss points of interest



Safety Considerations

- If you hear the fire alarm please exit the building promptly and cross the road. We will muster on the West side of the Street.
- Watch out for traffic
- If you need assistance at any time please let your team lead know



Calder Neighbourhood Renewal

Urban Analysis Workshop

September 14, 2019



Edmonton

Agenda

- Introduction and background: 5:30 - 5:45 p.m.
- Activity #1: 5:45 - 6:35 p.m.
- Break: 6:35 - 6:45 p.m.
- Activity #2: 6:45 - 7:50 p.m.
- Next Steps: 7:50 - 8:00 p.m.

Building Great Neighbourhoods

Working together to make the most of your neighbourhood.

This is your city and your neighbourhood. We want to understand how you experience your neighbourhood and ask for input on what we might do to make it better. We will work with you on the renewal of roads, sidewalks, streetlights, park spaces, and discuss other opportunities to enhance how people interact with the Calder neighbourhood. We will be open and transparent about how your input is used. Let's make the most out of your neighbourhood.

Calder Scope - What is Included

Upgrades to neighbourhood infrastructure including:

- Local and Collector Roads
- Sidewalks and Sidewalk Connections
- Curbs and Gutters
- Standard Galvanized Street Lights

Other upgrades could include:

- Connections that help you walk, bike and move around your neighbourhood
- Improvements to green spaces and parks
- Solutions to neighbourhood traffic issues
- Coordination with other projects happening in the neighbourhood
- Decorative street lights if the neighbourhood supports a local improvement

Calder Neighbourhood Renewal



- | | | | | | |
|--|--|--|--|---|--|
| <ul style="list-style-type: none"> — Calder Neighbourhood Boundary — Curbline ← Bicycle Network (Shared Roadway) ← Bicycle Network (Shared Use Path) ← Planned Active Transportation Connection (Start of the Metro Line Northwest) | <ul style="list-style-type: none"> ETS Bus Route & Stop Planned Metro Line Northwest LRT & Station 800m Walking Radius Bus Network Redesign (Removal) Bus Network Redesign (Addition) | <ul style="list-style-type: none"> Signalized Crosswalk Land Ownership Owned by Edmonton Catholic Schools Owned by Edmonton Public Schools Owned by City of Edmonton Calder Community League License Boundary | <ul style="list-style-type: none"> Key Destinations Public Park/School Playground Educational Destination Community Centre Seniors-oriented Facilities | <ul style="list-style-type: none"> Arterial Commercial Main Street Commercial Kensington Centre Place of Worship Soccer Field Baseball Diamond Hockey Rink Pathways | <ul style="list-style-type: none"> Playground |
|--|--|--|--|---|--|
- N
 200m
(Preliminary Inventory of Existing Information)

Calder Scope - What is NOT Included

The following are not included in the neighbourhood infrastructure upgrades:

- Arterial Roads (i.e., 127 Street)
- Alley Repairs
- Development or redevelopment on land not owned by the City
- Maintenance Issues (Snow Clearing / Lawn Mowing)
- Utility Work (is coordinated prior to Renewal)



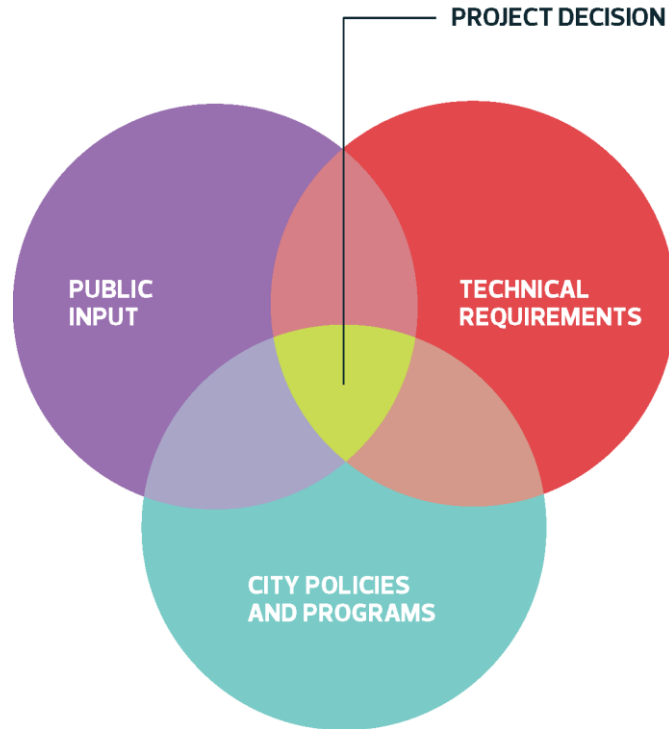
Public Engagement

Edmonton

Our Definition of Engagement

Public Engagement **creates opportunities** for people to **contribute to decision making** by City Council and Administration about the City's policies, programs, projects, and services, **and communicates how public input is collected and used.**

Decision Making Process



Public Engagement Spectrum



Building Great Neighbourhoods Public Engagement Road Map

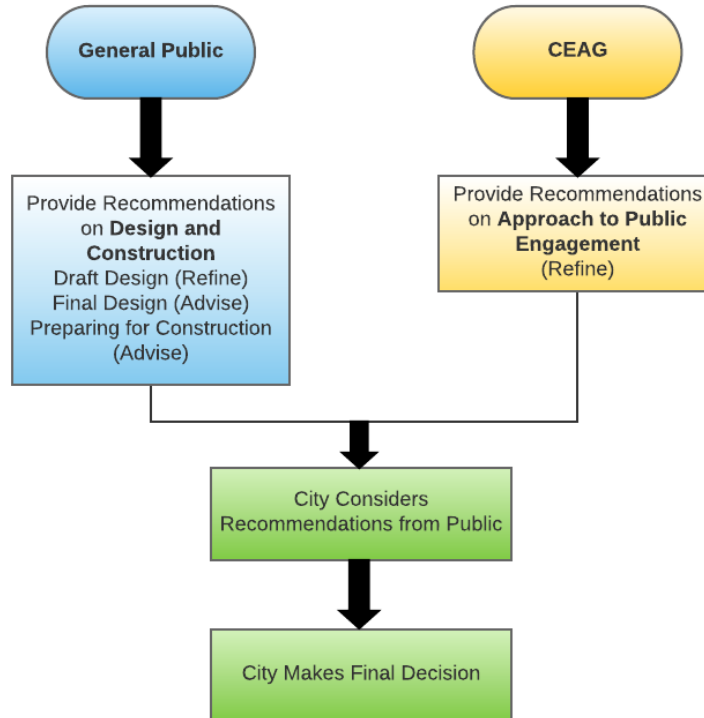


Community Engagement Advisory Group (CEAG)

Purpose of Community Engagement Advisory Group

- To **adjust** and **adapt** the project's draft public engagement plan and support initiatives for public engagement to reflect the unique needs, interests and readiness of Calder community.

Roles in Decision-Making





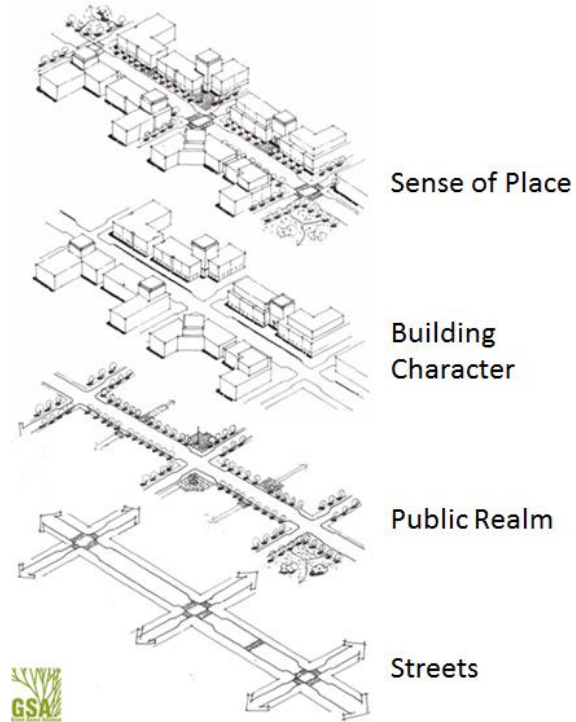
Urban Design

Edmonton

Urban Design - What is it?

Key Components

- Public Area
 - Streets, Open Spaces
- Private Area
 - Private Buildings
- Public/Private Interface



Urban Design - Potential Project Types

- Key intersections
- Transit zones
- School drop off zones
- Parks and open spaces
- Areas around places of worship
- Areas around medium density residential
- Pedestrian connectivity
- Active transportation
- Safety (CPTED)



Thank you!