

What We Decided Linear Park Renewal Final Design

(part of Inglewood
Neighbourhood Renewal)

DECIDE

SHARE YOUR VOICE
SHAPE OUR CITY

Edmonton

November 2020

Linear Park Renewal Final Design: **What We Decided**

What is Neighbourhood Renewal?

Through the City of Edmonton's Neighbourhood Renewal Program, the city works to rehabilitate roads, replace street lights, repair sidewalks and connect missing sidewalk links where possible.

Other opportunities to improve parks and public spaces are also explored, such as:

- + Adding trees and improving landscaping
- + Improving park amenities which could include: benches, waste bins
- + Adding walkways

Purpose

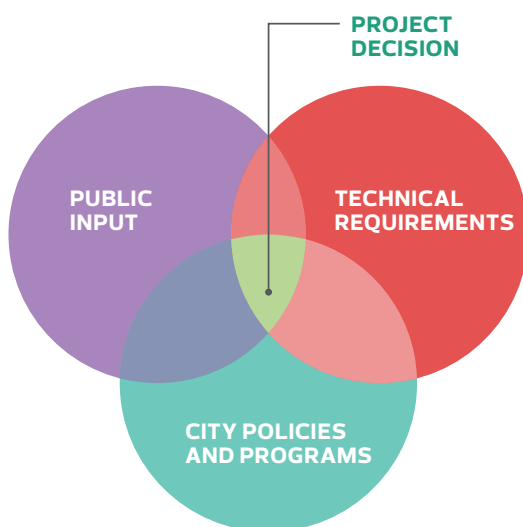
This report shares how the Inglewood Neighbourhood Renewal Project Team arrived at the Final Design for Linear Park renewal. The City uses policy and program information, public engagement input and technical requirements to make design decisions.

Making Neighbourhood Renewal Decisions

The City makes decisions using a combination of policy and program information, public engagement input, technical requirements and available funding.

This process helps to ensure that the decisions we make are fiscally responsible, align with best practices, consider the existing public and private infrastructure, land uses and activities in the neighbourhood and result in the best outcomes for our city. The role of public engagement input is to help the City consider what is important to people with an interest in Inglewood, as well as how the neighbourhood renewal construction decisions will affect them.

The City policies and programs, technical requirements and public engagement input include:



City Policies and Programs

- + Complete Streets
- + Dogs In Open Spaces Strategy
- + Safe Mobility Strategy
- + Gender-Based Analysis Plus (GBA+)
- + Public Engagement Policy
- + Breathe – Green Network Strategy
- + Winter City Guidelines
- + Accessibility for People with Disabilities Policy
- + Active Transportation Policy
- + The Edmonton Bike Plan

Public Engagement Input

- + **Advise** on Neighbourhood Renewal Vision and Guiding Principles
- + **Refine** Vision and Guiding Principles
- + **Advise** on neighbourhood assets, opportunities, and priorities
- + **Refine** Draft Design
- + **Advise** on Final Design

Technical Requirements

- + Infrastructure Assessments
- + Complete Streets Design and Construction Standards
- + Accessibility Design Guide
- + Landscape Design Standards
- + Crime Prevention through Environmental Design
- + Urban Design Framework

The City's approach to public engagement input:

People living/working in the surrounding area and with an interest in Linear Park were invited to provide input into the City's decision-making process for the park's renewal at various stages along the roadmap shown here.



The City of Edmonton requested input from citizens to help guide the project. The City's public engagement spectrum below shows the four distinct levels of influence that the public had on decisions made by the City throughout the project.

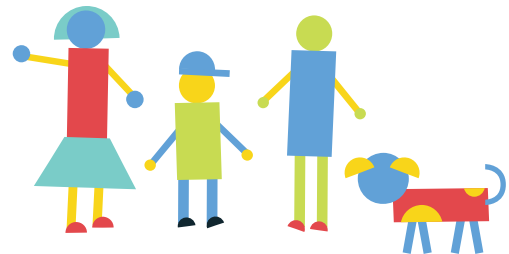


How We Engaged

The chart below provides a listing of the tactics and their dates and participation numbers.

Inglewood Neighbourhood Renewal Public Engagement

Road Map Steps	Engagement Tactic	Timeline	Participation/ Responses
Building a Project Vision Together	Community Walk / Ideas Workshop Stakeholder Committee Meetings Two drop-in public engagement sessions, community conversations and online survey	Fall/winter 2017 March 2018 April 2018	27 Participants 15 Participants More than 195 Participants
Exploring Opportunities and Options and Tradeoffs	Public Engagement Event (in person) Online Survey Stakeholder Meetings	August 2018	245+ Engaged participants
Community Feedback on Draft Design of Inglewood Neighbourhood Renewal	Public Engagement Event (in person): Inglewood park designs for John A. Norris and Linear Park were introduced at this event Online Survey	October 2018	105+ Engaged participants
Final design for Inglewood Neighbourhood Renewal	Refined designs for Inglewood Neighbourhood Renewal; John A. Norris and Linear park were shared.	January 2019	195+ engaged participants
Community Feedback on Revised Design for Linear Park	Two drop-in public engagement sessions Stakeholder feedback	November 2019	75+ engaged participants
Community Feedback on Final Design for Linear Park	Linear Park pop-up engagements Online Survey Stakeholder feedback	September 2020	70+ engaged participants



Vision for Inglewood Neighbourhood Renewal

The **Vision and Important Elements** were co-created with the community and are unique to Inglewood. They helped guide decision-making throughout the neighbourhood renewal planning process.

The Vision set the direction for neighbourhood renewal by stating the elements that are most important to the community for the future. The Guiding Principles are ideas and priorities that shape how the Vision is applied to the neighbourhood design including Linear Park.

Vision

Inglewood is a safe and walkable neighbourhood. It is welcoming to everyone and brings people together through fun, community building activities. It reflects its diversity and connection to Indigenous history.

IMPORTANT ELEMENTS

- + A safe neighbourhood, supported by lighting and visibility.
- + A walkable neighbourhood, supported by accessibility, traffic management, and safe crossings and pathways.
- + Common spaces that are functional and have amenities to support fun and community-building activities for people of all ages and backgrounds.
- + Visual representations of the neighbourhood's diversity, including Indigenous heritage.

The Final Design

The **Final Design** for Linear Park renewal focuses on making public park spaces safe and accessible for all ages, genders and mobility levels in all seasons. To achieve this, the design includes new lighting, sidewalk connections, enhanced dog off-leash area, shared-use paths and a new meet-up space in the middle of the park.

Linear Park is refreshed and redesigned to provide a socially active neighbourhood with more inviting outdoor spaces to walk, bike, gather and enjoy recreational activities including an enhanced off-leash dog area.

The final design can be found at edmonton.ca/BuildingInglewood



What We Decided

This section presents the final project decisions for Linear Park renewal in Inglewood, including the key City policies and programs, public engagement input and technical requirements that informed the City's decisions related to each topic. To view the final designs, please visit edmonton.ca/BuildingInglewood. Note: All design decisions are subject to final approvals and funding.

Legend for “What We Accounted For To Make Our Decisions”

The City uses Policies and Programs, Public Engagement Input and Technical Requirements to make neighbourhood renewal decisions.

This report uses three coloured icons to illustrate which decision-making criteria is a policy or program, public engagement input, or a technical requirement. You will see these icons attached to each bullet point in the “What We Accounted For To Make Our Decisions” column in each table on the following page:

The decision making criteria are:



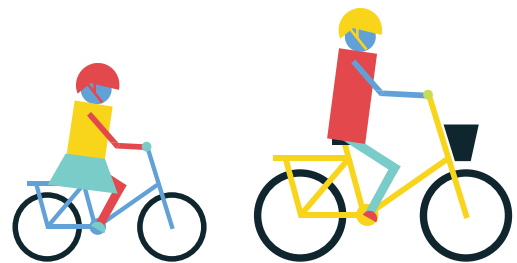
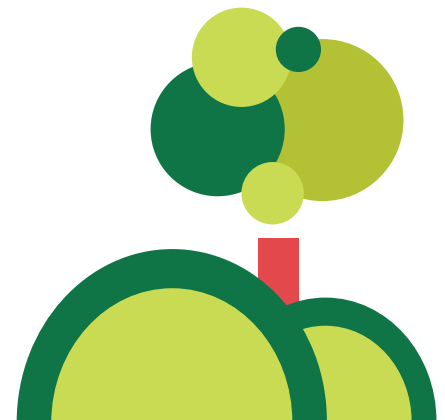
City Policies and Programs






Technical Requirements



Public Engagement Input



Linear Park (121 Street and 118 – 111 Avenue)

What we decided	What we accounted for to make the decision
<p>To make improvements to Linear Park for all users of the park, improve connections through the park and add features for people with dogs while maintaining the openness of the park site.</p> <p>The Final Design includes:</p> <p>SHARED-USE PATH</p> <ul style="list-style-type: none"> + Update / renew existing shared-use path on south side of 114 Avenue (south side of park) + Meander new shared-use path northwest after 114 Avenue (north side of park) + Add connector pathways to the shared-use path from neighbourhood Avenues 	<p> PUBLIC INPUT</p> <ul style="list-style-type: none"> + People told us that Linear Park is the number one priority as a green space to improve in Inglewood + Received suggestions to encourage all users to feel safe and less conflict between users to occur + A separate space for dogs and other park users is desired; people support a partial fenced-in off-leash dog park. + New pedestrian connections to the park shared-use path are supported + Suggestions to include a visual barrier off 118 Avenue to limit dog movement + Desire to have more seating and a gathering area + Desire for enhanced park amenities to create a more welcome and safe park space
<p>PARK LIGHTING</p> <ul style="list-style-type: none"> + Add park lighting along the shared-use path from 111 Avenue to 118 Avenue <p>GATHERING SPACE – PLAZA</p> <ul style="list-style-type: none"> + Add 114 Avenue plaza, placed in the middle of the park in an area where it is visible and has sight lines throughout the park 	<p> TECHNICAL CONSIDERATIONS</p> <ul style="list-style-type: none"> + Landscaping Design Standards: The design is informed by and will support landscaping design standards + Existing infrastructure: Working around existing trees/ landscaping, and underground and above ground utilities
<p>DOGS OFF-LEASH</p> <ul style="list-style-type: none"> + Update / renew neighbourhood dog off-leash park area to designated northeast of 114 Avenue, partially enclosed with plantings and fencing + Open areas for recreation space 	<p> CITY POLICIES AND PROGRAMS</p> <ul style="list-style-type: none"> + BREATHE – Green Network Strategy: promotes an adequate supply, quality and distribution of open space, that is accessible and inclusive for all + Dogs in Open Spaces Strategy: creates a guideline for the planning, design and maintenance of Edmonton's off-leash areas. + Neighbourhood Renewal Program: The City budget for neighbourhood renewal cannot accommodate all of the proposed park improvements; the City will explore other funding programs to support these improvements. + Universal Design Standards: The City follows universal design (i.e., Access Design Guide) to support access and use for people of all ages and abilities + GBA+: The City applies the gender based analysis (GBA+) process to examine and address how policies, programs and services impact diverse individuals and groups. It is applied to better understand diverse perspectives, experiences and needs and create services that do our best to serve everyone.

Tree and Naturalization Planting

What we decided	What we accounted for to make the decision
<p>To add to the City's Tree Canopy and look for opportunities to plant new trees as succession planting.</p>	<div data-bbox="751 380 812 426"></div> <div data-bbox="824 401 985 426">PUBLIC INPUT</div> <ul style="list-style-type: none"> + Maintaining current trees and planting new trees was important to residents
	<div data-bbox="751 541 803 594"></div> <div data-bbox="812 562 1148 588">TECHNICAL CONSIDERATIONS</div> <ul style="list-style-type: none"> + Landscaping Design Standards: The design is informed by and will support landscaping design standards + Existing infrastructure: Working around existing trees/ landscaping, and underground and above ground utilities + Partnerships: The City has partners to facilitate the addition of tree planting in parks
	<div data-bbox="751 852 803 909"></div> <div data-bbox="812 877 1166 903">CITY POLICIES AND PROGRAMS</div> <ul style="list-style-type: none"> + The City of Edmonton's 2010 Corporate Tree Policy: supports the orderly development and growth of the City's tree inventory and the protection of the tree canopy
<p>To add to the City's naturalization planting and natural beauty of Linear Park.</p>	<div data-bbox="751 1045 812 1092"></div> <div data-bbox="824 1066 985 1092">PUBLIC INPUT</div> <ul style="list-style-type: none"> + The public would like to keep naturalization areas in the park and would be happy with the addition of more naturalization plantings in the park
	<div data-bbox="751 1234 803 1287"></div> <div data-bbox="812 1255 1148 1281">TECHNICAL CONSIDERATIONS</div> <ul style="list-style-type: none"> + Landscaping Design Standards: The design is informed by and will support landscaping design standards + Existing infrastructure: Working around existing trees/ landscaping and use of the park. + Partnerships: The City has partners to facilitate the addition of naturalized landscaping in parks
	<div data-bbox="751 1541 803 1598"></div> <div data-bbox="812 1570 1166 1596">CITY POLICIES AND PROGRAMS</div> <ul style="list-style-type: none"> + The City of Edmonton's 2010 Corporate Tree Policy: Economic, environmental and quality of life benefits are all reasons for naturalizing and may contain trees, shrubs or wildflowers.

Next Steps

Linear Park Renewal Pre-Construction Information

Construction for Linear Park renewal is scheduled for construction season 2021. You may see a few activities in the park prior to construction, including:

- + Trees being pruned if they are in the way of the construction equipment
- + Utility work or trenching

For more information:

edmonton.ca/BuildingInglewood

Email: buildinggreatneighbourhoods@edmonton.ca





Working together to make the most out of your neighbourhood.

This is your city and your neighbourhood. We want to understand how you experience your neighbourhood and ask for your input on what we might do to make it better. We will engage and work with you on the renewal of streets, sidewalks, street lights, and park spaces, and promote other community opportunities to enhance how people live and interact in your neighbourhood. We commit to being open and transparent about how your input is used. Let's make the most out of your neighbourhood.

edmonton.ca/BuildingInglewood

SHARE YOUR VOICE
SHAPE OUR CITY

Edmonton