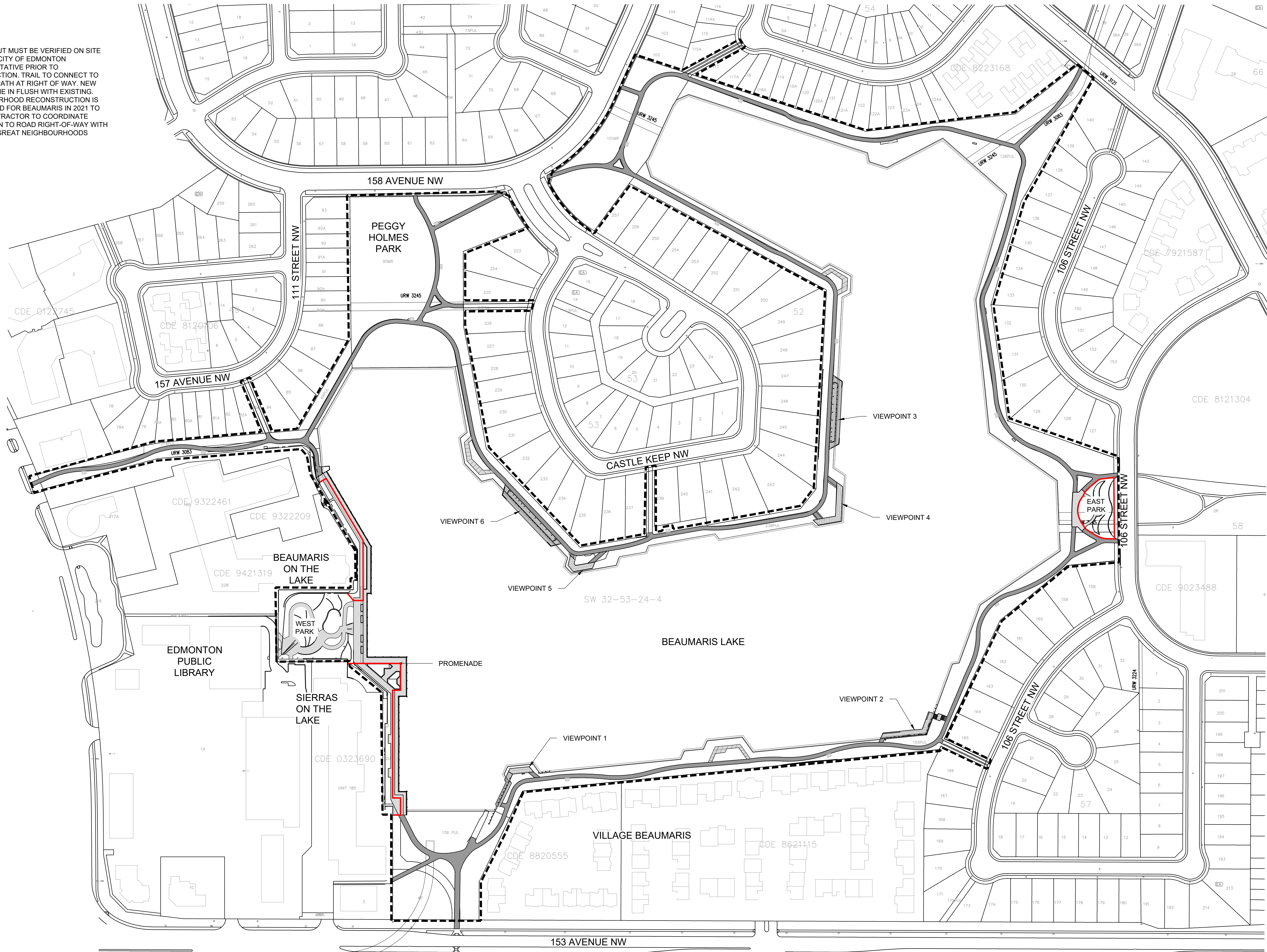
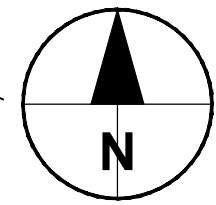
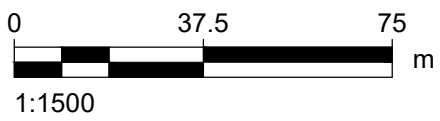


NOTE:
1. ALL SET OUT MUST BE VERIFIED ON SITE WITH THE CITY OF EDMONTON REPRESENTATIVE PRIOR TO CONSTRUCTION. TRAIL TO CONNECT TO EXISTING PATH AT RIGHT OF WAY. NEW TRAIL TO TIE IN FLUSH WITH EXISTING. NEIGHBOURHOOD RECONSTRUCTION IS SCHEDULED FOR BEAUMARIS IN 2021 TO 2022. CONTRACTOR TO COORDINATE TRAIL TIE IN TO ROAD RIGHT-OF-WAY WITH BUILDING GREAT NEIGHBOURHOODS PROJECT.



OVERALL PLAN



AECOM

PROJECT

Beaumaris Lake
Open Space
Rehabilitation

Beaumaris Neighbourhood
Edmonton, Alberta
CLIENT

City of Edmonton

Open Space Infrastructure Delivery
Integrated Infrastructure Services
14th Floor, Edmonton Tower
10111-104 Avenue NW
Edmonton, Alberta, T5J 0J4
www.edmonton.ca

CONSULTANT

AECOM Canada Ltd.
101-18817 Stony Plain Road NW
Edmonton, Alberta, T5S 0C2
780.486.7000 tel 780.486.7070 fax
www.aecom.com

SUB CONSULTANTS

ground cubed landscape architects
P.O. Box 35084 Mid Town
Edmonton, Alberta, T5J 0B7
403.475.0719 tel 403.452.8632 fax
www.ground3.com

REGISTRATION



ISSUE/REVISION

I/R	DATE	DESCRIPTION
0	20/06/17	ISSUED FOR CONSTRUCTION
C	20/02/28	ISSUED FOR TENDER
B	19/12/31	ISSUED FOR 90% REVIEW
A	19/10/25	ISSUED FOR 60% REVIEW

PROJECT NUMBER

60613497

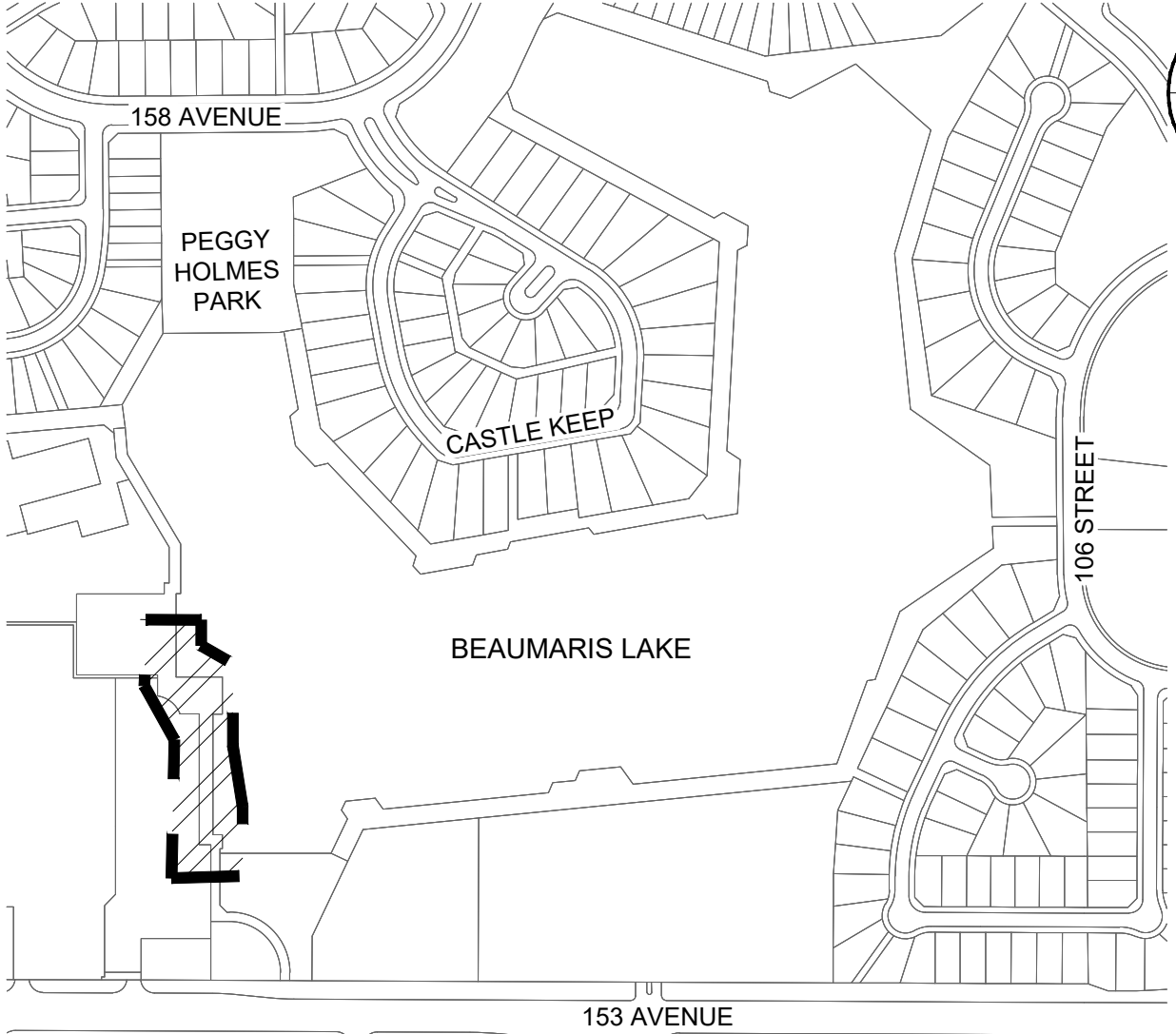
SHEET TITLE

OVERALL PLAN

SHEET NUMBER

00-L-0003

This drawing has been prepared for the use of AECOM's client and may not be used, reproduced or relied upon by third parties, except as agreed by AECOM and its client, as required by law or for use by governmental reviewing agencies. AECOM accepts no responsibility, and denies any liability whatsoever, to any party that modifies this drawing without AECOM's express written consent. Do not scale this document. All measurements must be obtained from stated dimensions.

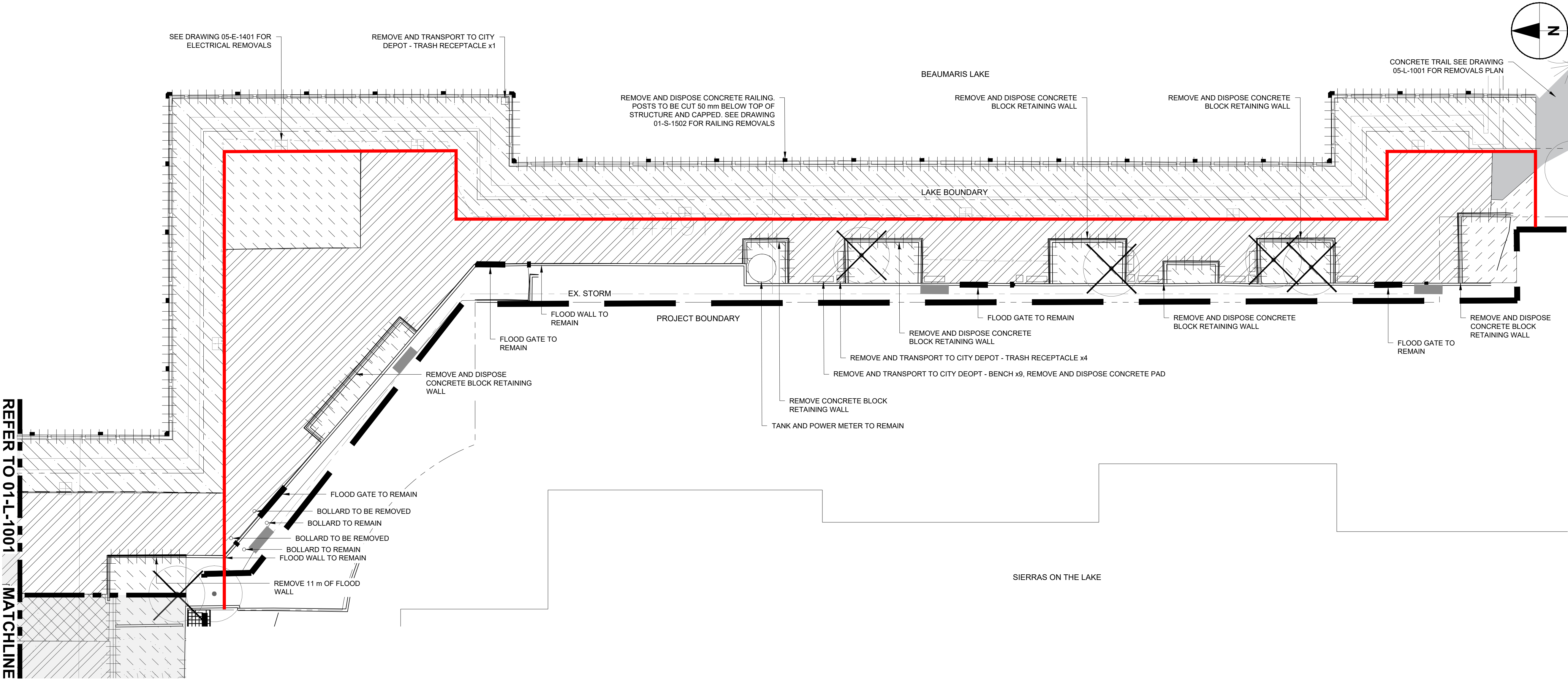


KEY PLAN
Scale: N.T.S.

REMOVALS LEGEND

- WALLS OR RAILING OR CURB, REMOVE AND DISPOSE
- PAVER, REMOVE AND DISPOSE
- PROMENADE STRUCTURE TO REMAIN
- SOFT LANDSCAPE AND PLANT MATERIAL, REMOVE AND DISPOSE
- DECIDUOUS TREES TO BE REMOVED BY THE CITY OF EDMONTON
- DECIDUOUS TREES TO BE RETAINED AND PROTECTED SEE DRAWING 00-L-1800 FOR TREE PROTECTION DETAIL

FOR NOTES REFER TO 00-L-0007



PROMENADE (SOUTH) REMOVALS PLAN



Scale 1:200



PROJECT

Beaumaris Lake
Open Space
Rehabilitation

Beaumaris Neighbourhood
Edmonton, Alberta

CLIENT

City of Edmonton

Open Space Infrastructure Delivery
Integrated Infrastructure Services
14th Floor, Edmonton Tower
10111-104 Avenue NW
Edmonton, Alberta, T5J 0J4
www.edmonton.ca

CONSULTANT

AECOM Canada Ltd.
101-18817 Stony Plain Road NW
Edmonton, Alberta, T5S 0C2
780.486.7000 tel 780.486.7070 fax
www.aecom.com

SUB CONSULTANTS

ground cubed landscape architects
P.O. Box 35084 Mid Town
Edmonton, Alberta, T5J 0B7
403.475.0719 tel 403.452.8632 fax
www.ground3.com



REGISTRATION



ISSUE/REVISION

0	20/06/17	ISSUED FOR CONSTRUCTION
C	20/02/28	ISSUED FOR TENDER
B	19/12/31	ISSUED FOR 90% REVIEW
A	19/10/25	ISSUED FOR 60% REVIEW
I/R	DATE	DESCRIPTION

KEY PLAN

PROJECT NUMBER

60613497

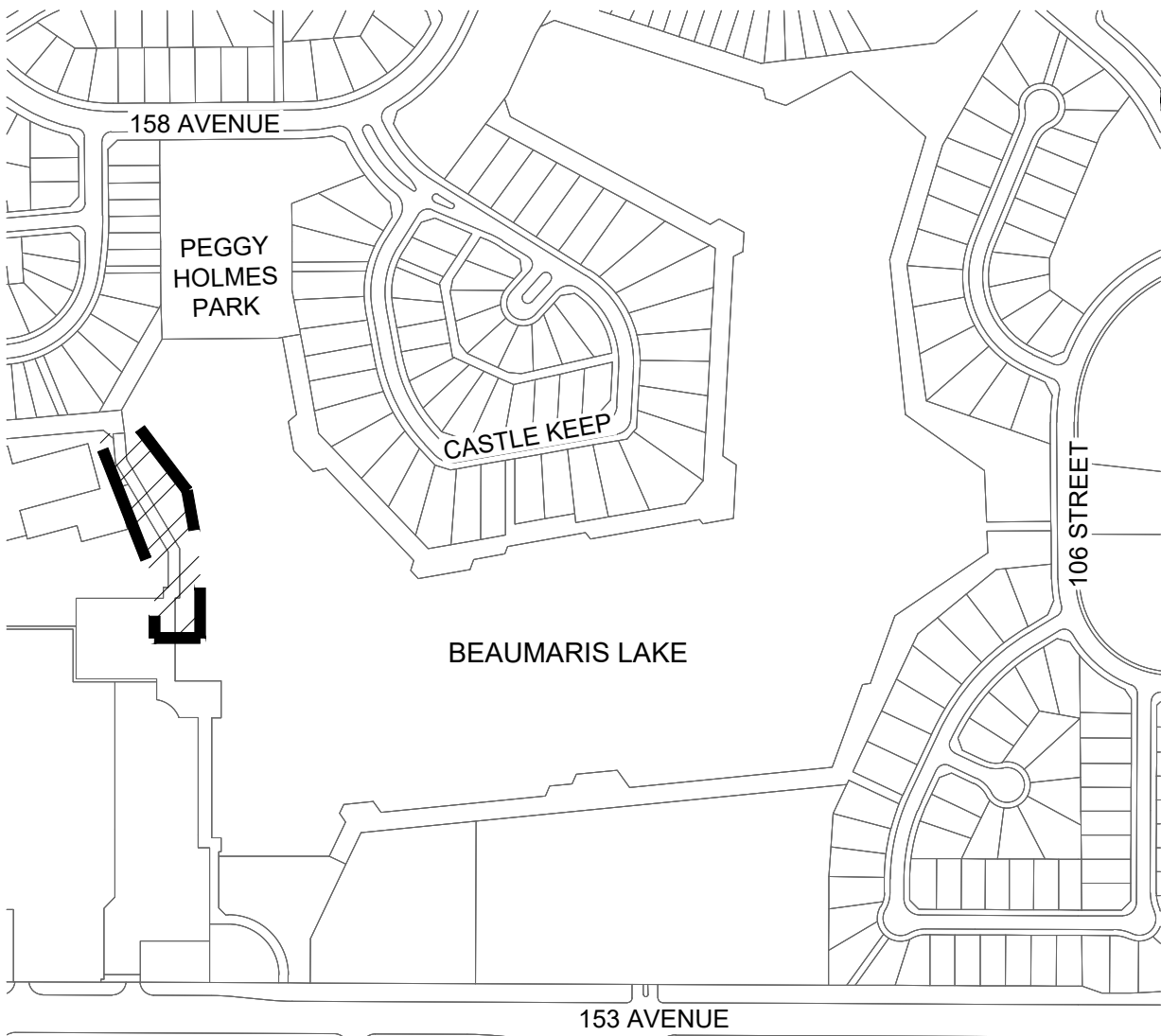
SHEET TITLE

PROMENADE (SOUTH)
REMOVALS PLAN

SHEET NUMBER

01-L-1002


This drawing has been prepared for the use of AECOM's client and may not be used, reproduced or relied upon by third parties, except as agreed by AECOM and its client as required by law or for use by governmental reviewing agencies. AECOM accepts no responsibility, and denies any liability whatsoever, to any party that modifies this drawing without AECOM's express written consent. Do not scale this document. All measurements must be obtained from stated dimensions.





KEY PLAN


Scale: N.T.S.


SURFACE LEGEND

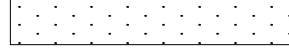
- 

WOOD TEXTURED PAVERS ON EXISTING PROMENADE STRUCTURE
- 

DECORATIVE CONCRETE, BROOM FINISH AND SAW CUTS
- 

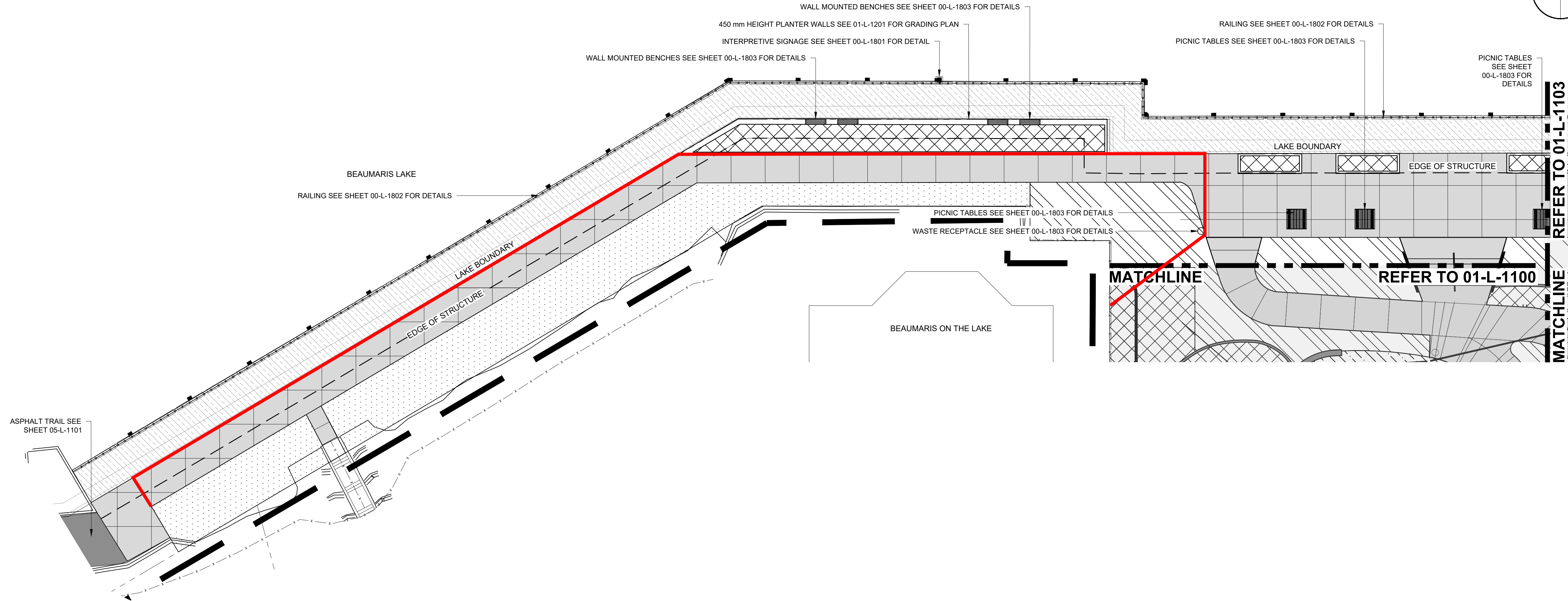
ASPHALT
- 

PLANTING BED COMPLETE WITH 450 mm DEPTH TOPSOIL AND 100 mm DEPTH SHREDDED CONIFEROUS BARK MULCH
- 

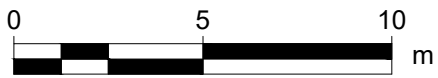
NATURESTURF COMPLETE WITH 300 mm DEPTH TOPSOIL
- 

CENTRAL PARKLAND SEED COMPLETE WITH 300 mm DEPTH TOPSOIL

FOR NOTES REFER TO 00-L-0007



PROMENADE (NORTH) SURFACE TREATMENT AND LAYOUT PLAN



Scale 1:200

AECOM

PROJECT

Beaumaris Lake
Open Space
Rehabilitation

Beaumaris Neighbourhood
Edmonton, Alberta

CLIENT

City of Edmonton

Open Space Infrastructure Delivery
Integrated Infrastructure Services
14th Floor, Edmonton Tower
10111-104 Avenue NW
Edmonton, Alberta, T5J 0J4
www.edmonton.ca

CONSULTANT

AECOM Canada Ltd.
101-18817 Stony Plain Road NW
Edmonton, Alberta, T5S 0C2
780.486.7000 tel 780.486.7070 fax
www.aecom.com

SUB CONSULTANTS

ground cubed landscape architects
P.O. Box 35084 Mid Town
Edmonton, Alberta, T5J 0B7
403.475.0719 tel 403.452.8632 fax
www.ground3.com



REGISTRATION



ISSUE/REVISION

0	20/06/17	ISSUED FOR CONSTRUCTION
C	20/02/28	ISSUED FOR TENDER
B	19/12/31	ISSUED FOR 90% REVIEW
A	19/10/25	ISSUED FOR 60% REVIEW
I/R	DATE	DESCRIPTION

KEY PLAN

PROJECT NUMBER

60613497

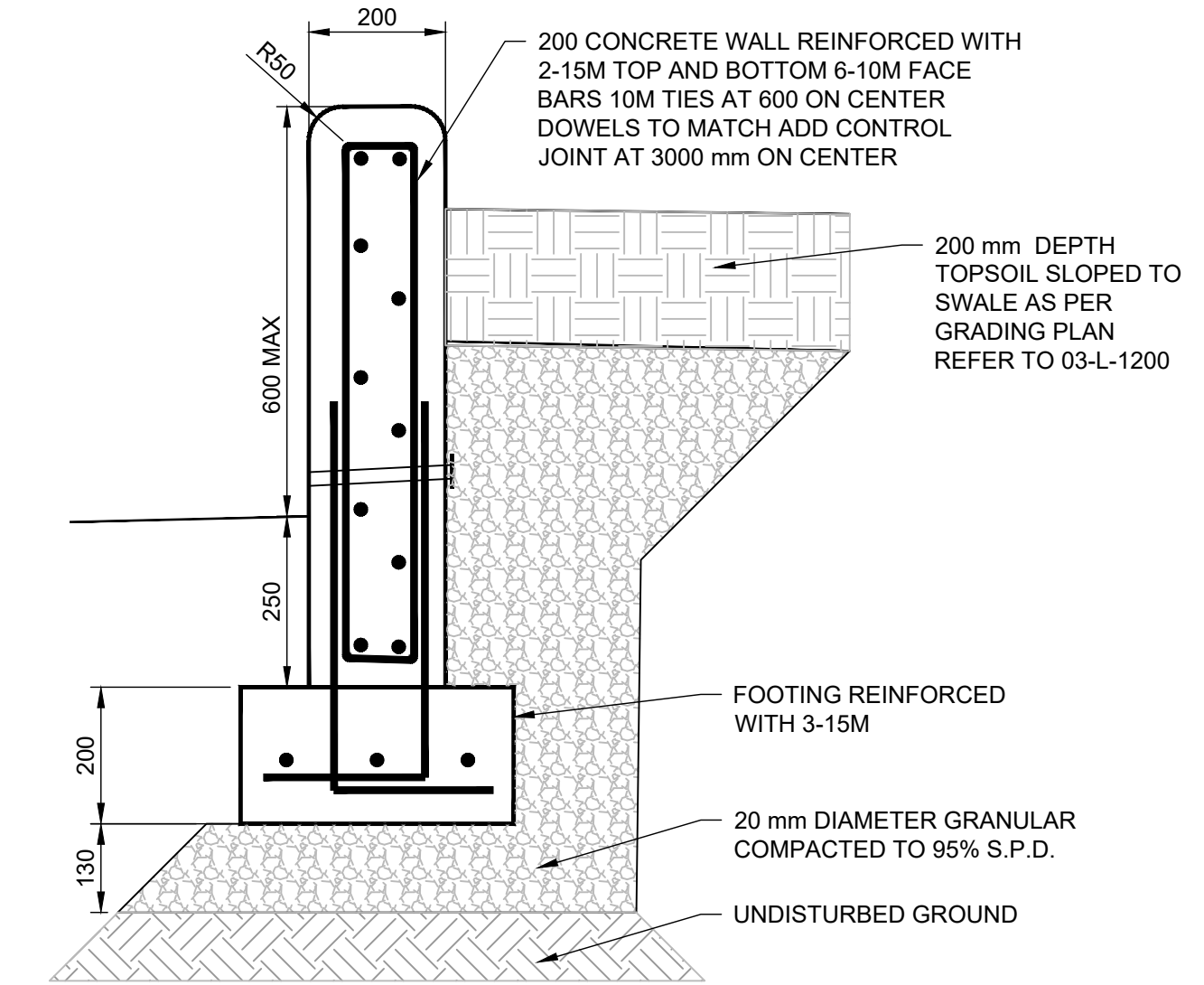
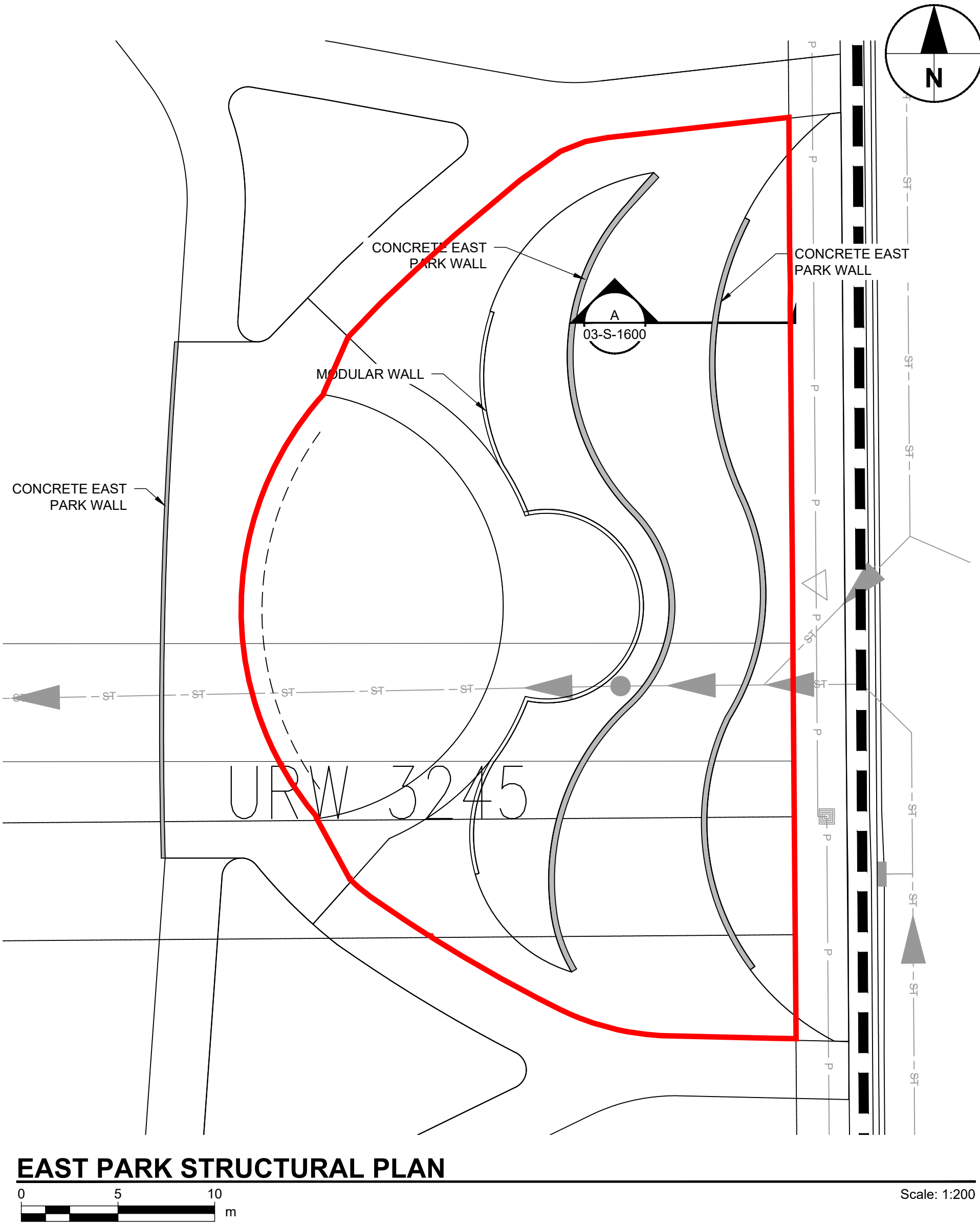
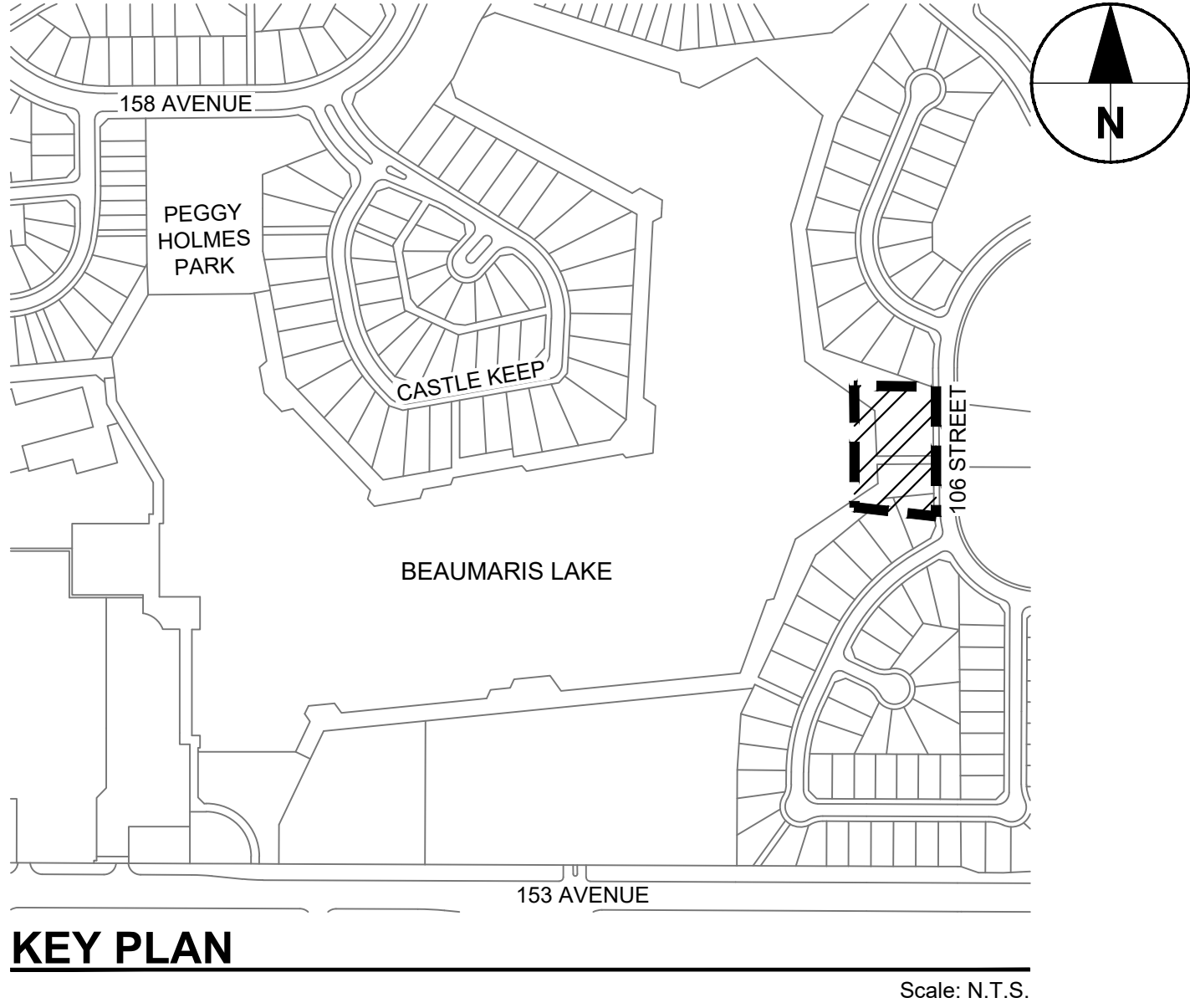
SHEET TITLE

PROMENADE (NORTH)
SURFACE TREATMENT
AND LAYOUT PLAN

SHEET NUMBER

01-L-1102

This drawing has been prepared for the use of AECOM's client and may not be used, reproduced or relied upon by third parties, except as agreed by AECOM and its client as required by law or for use by governmental reviewing agencies. AECOM accepts no responsibility, and denies any liability whatsoever, to any party that modifies this drawing without AECOM's express written consent. Do not scale this document. All measurements must be obtained from stated dimensions.



A EAST PARK WALL SECTION - 200 mm WIDTH
03-S-1600 1:10

PROJECT

Beaumaris Lake Open Space Rehabilitation

Beaumaris Neighbourhood
Edmonton, Alberta
CLIENT

City of Edmonton

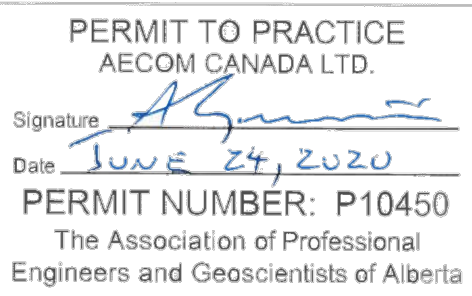
Open Space Infrastructure Delivery
Integrated Infrastructure Services
14th Floor, Edmonton Tower
10111-104 Avenue NW
Edmonton, Alberta, T5J 0J4
www.edmonton.ca

CONSULTANT

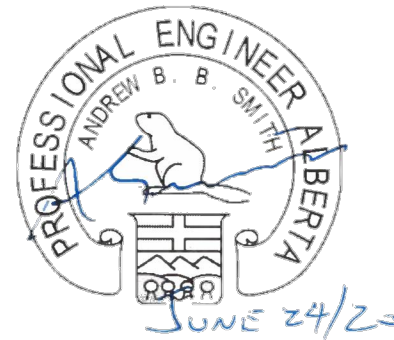
AECOM Canada Ltd.
101-18817 Stony Plain Road NW
Edmonton, Alberta, T5S 0C2
780.486.7000 tel 780.486.7070 fax
www.aecom.com

SUB CONSULTANTS

ground cubed landscape architects
P.O. Box 35084 Mid Town
Edmonton, Alberta, T5J 0B7
403.475.0719 tel 403.452.8632 fax
www.ground3.com



REGISTRATION



ISSUE/REVISION

I/R	DATE	DESCRIPTION
0	20/06/17	ISSUED FOR CONSTRUCTION
A	20/02/28	ISSUED FOR TENDER
I/R	DATE	DESCRIPTION

PROJECT NUMBER

60613497

SHEET TITLE

EAST PARK STRUCTURAL PLAN
AND DETAILS

SHEET NUMBER

03-S-1600