

Edmonton Bike Plan

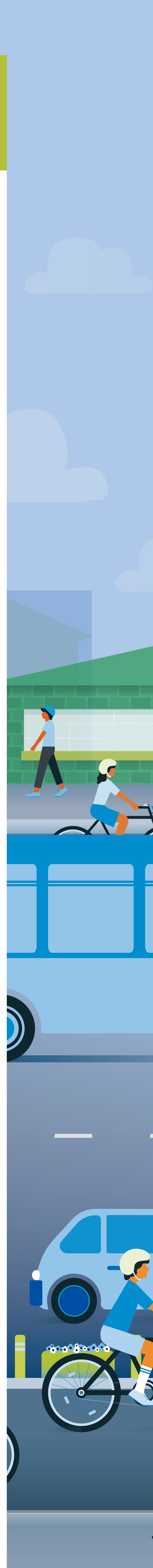
Welcome to our
Public Engagement Sessions



Edmonton Bike Plan

City of Edmonton Public Engagement Promise

- » This is our city.
- » We value your input on how we maintain, grow and build Edmonton.
- » We believe engagement leads to better decision making.
- » We are committed to reaching out to our diverse communities in thoughtful and meaningful ways.
- » We want to understand your perspectives and build trusting relationships with you.
- » We will show you how you help influence City decisions.



Edmonton Bike Plan

Why We're Here

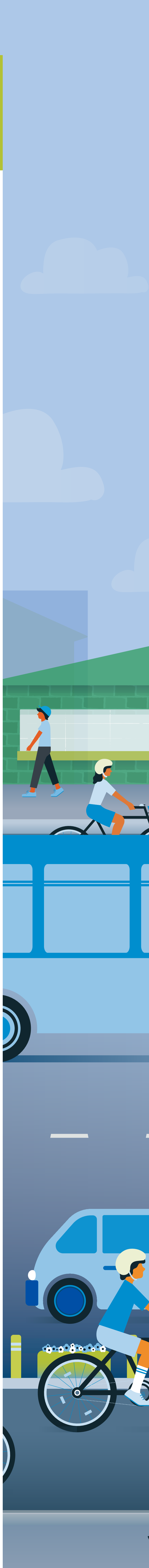
The last 10 years have seen a lot of change, growth and conversation around bikes, and we're getting ready to develop the next Bike Plan for Edmonton.

City staff will continue holding conversations with Edmontonians to gather their thoughts on what should be considered as we plan for the future.

The result will be a high-level strategic plan that will guide Administration and Council as they continue to improve and grow the bike network.

This public engagement is at the **ADVISE** and **REFINE** level of the City's public engagement spectrum.

Public Engagement Spectrum



Edmonton Bike Plan

WELCOME to Edmonton's BIKE PLAN

Edmonton's Bike Plan will update the 2009 vision for biking in Edmonton.

Phase 1: Vision + Values

Help us decide: What is our shared vision and values for bikes in Edmonton?

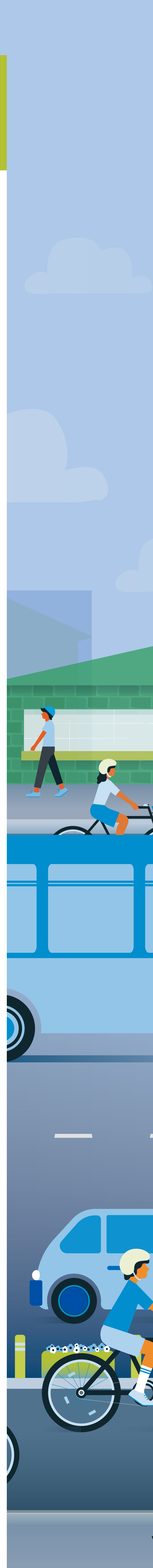
- » **Vision:** The future state of cycling in Edmonton. This is what it will look like, feel like, sound like. This is who will use it. This is how Edmontonians will talk about it and describe it. Here is why we will be proud of it and celebrate it.
- » **Values:** This is what's important and meaningful to us. This is our core philosophy for cycling in Edmonton. This is how the Bike Plan reflects our very identity as Edmontonians.



edmonton.ca/BikePlan

SHARE YOUR VOICE
SHAPE OUR CITY

Edmonton

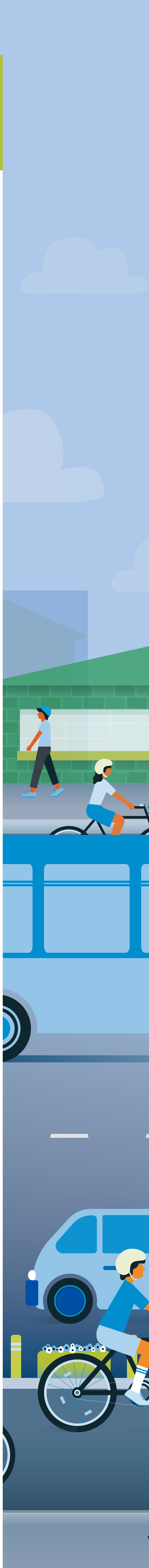


Edmonton Bike Plan

Qualities you've identified in the last decade

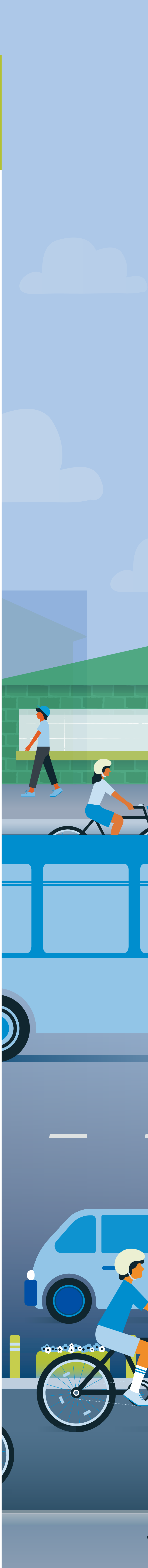
Over the past decade, the City of Edmonton has worked hard to understand citizens' views on the role of cycling in building our city. Through the last 10 years of installing bike lanes and trails, engaging with communities, and doing research and surveys, here is what we've learned from working with you.

- » **Community-Driven:** Involve the community in all aspects of bike planning including route selection, type of infrastructure and aesthetic treatments.
- » **Safe and Accessible:** Edmonton's bike network should be safe, comfortable and accessible for people of All Ages and Abilities.
- » **Respectful:** Create conditions so that people driving, biking, taking transit, walking or rolling can co-exist and care about each other.
- » **Well-designed:** Trade offs and creative solutions are explored and implemented to create enjoyable, people-friendly spaces and neighbourhood vitality.
- » **Supported:** Riding a bike and following the rules are supported through enforcement, education, and encouragement.
- » **Integrated:** Bike routes consider and are connected with other ways to travel, such as public transit, driving, walking and rolling.
- » **Connected:** People can bike a bicycle to regional, city-wide and neighbourhood destinations on a seamless, intuitive network that is easy to navigate.
- » **Convenient:** Riding a bike is an easy, attractive option supported by direct routes, convenient and secure bike parking, and available bike share.
- » **Reliable:** People can reliably enjoy low-stress cycling all year round without major detours or interruptions.



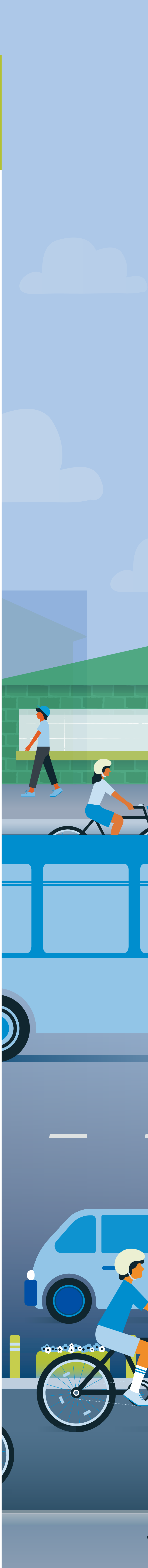
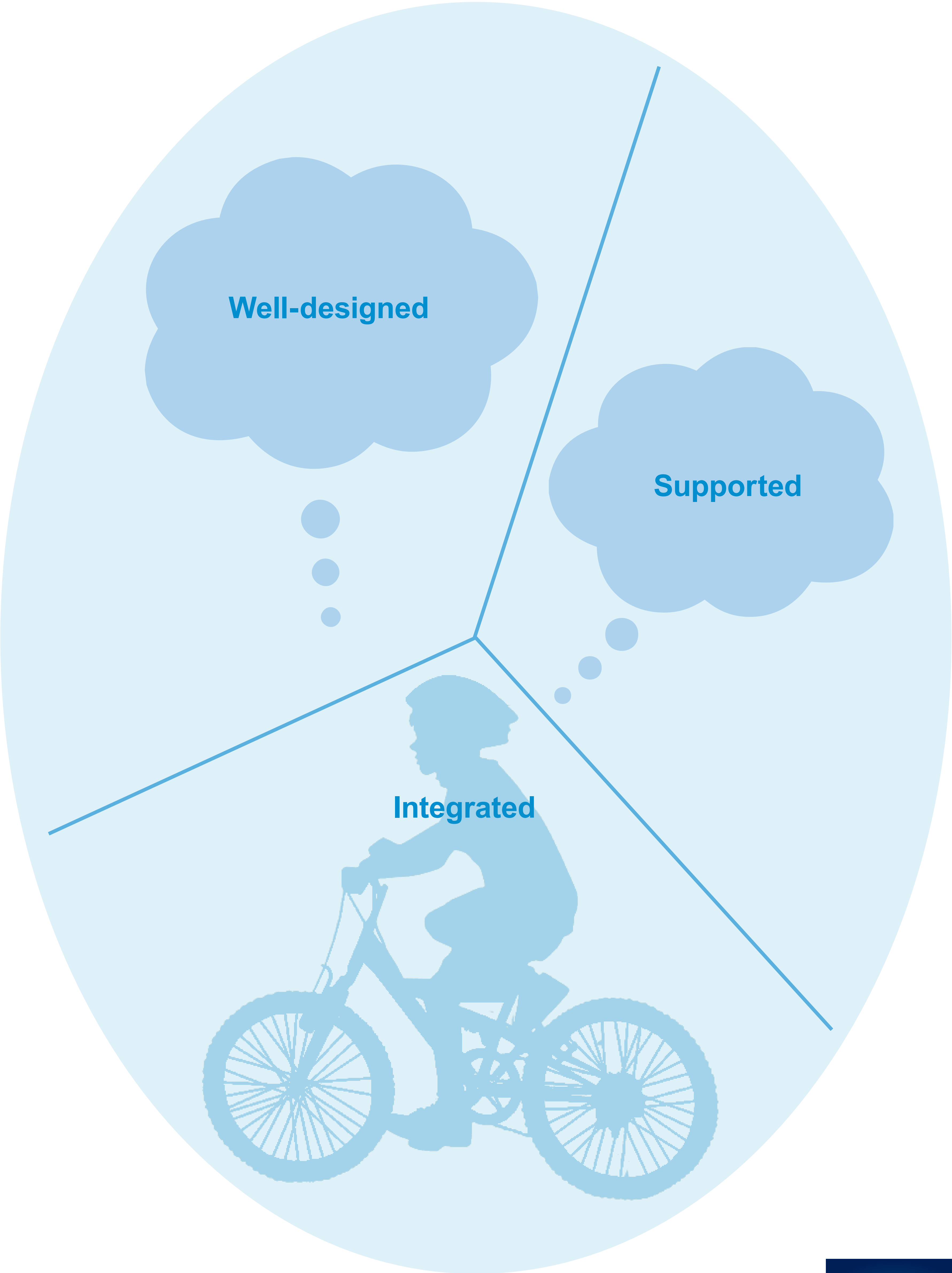
Edmonton Bike Plan

Place a dot beside the Qualities that are most important to you. Your input will be used to inform the creation of values.



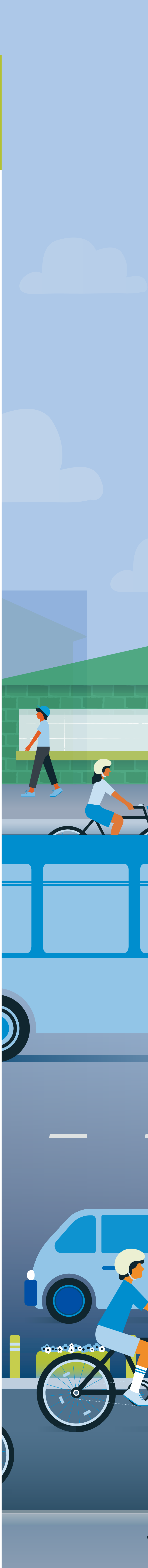
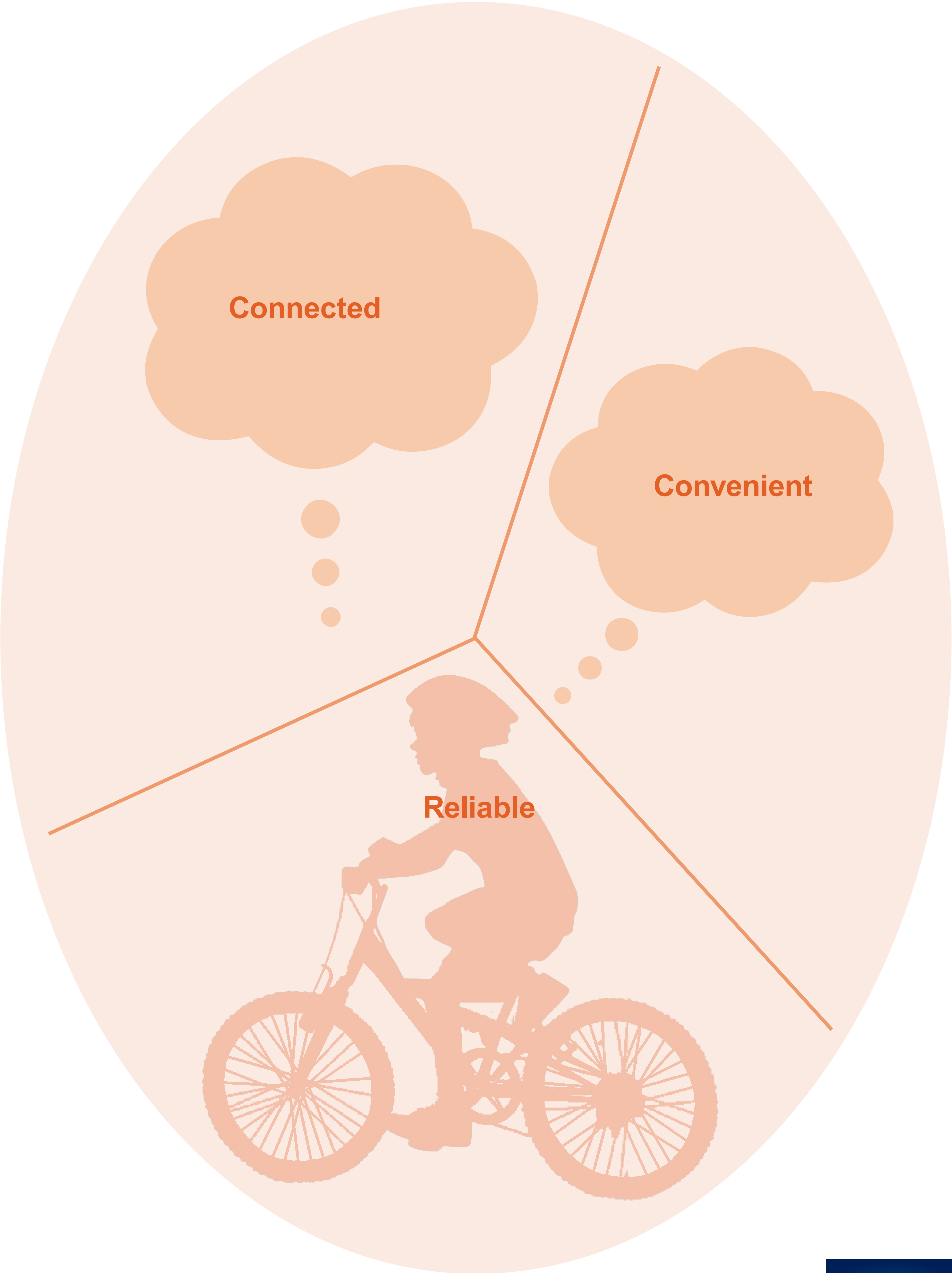
Edmonton Bike Plan

Place a dot beside the Qualities that are most important to you. Your input will be used to inform the creation of values.



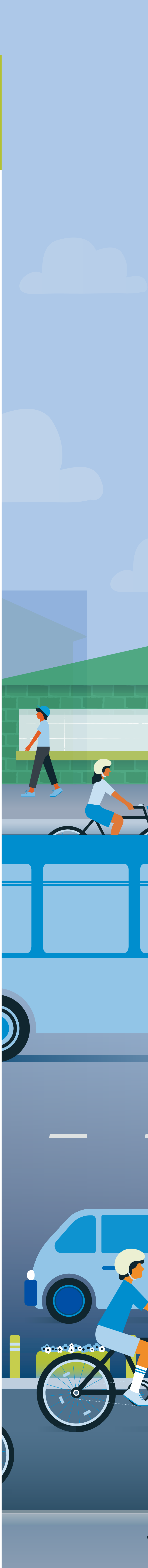
Edmonton Bike Plan

Place a dot beside the Qualities that are most important to you. Your input will be used to inform the creation of values.



Edmonton Bike Plan

Today's View



Edmonton Bike Plan

Tell us what you think about biking in Edmonton today. Grab a sticky...

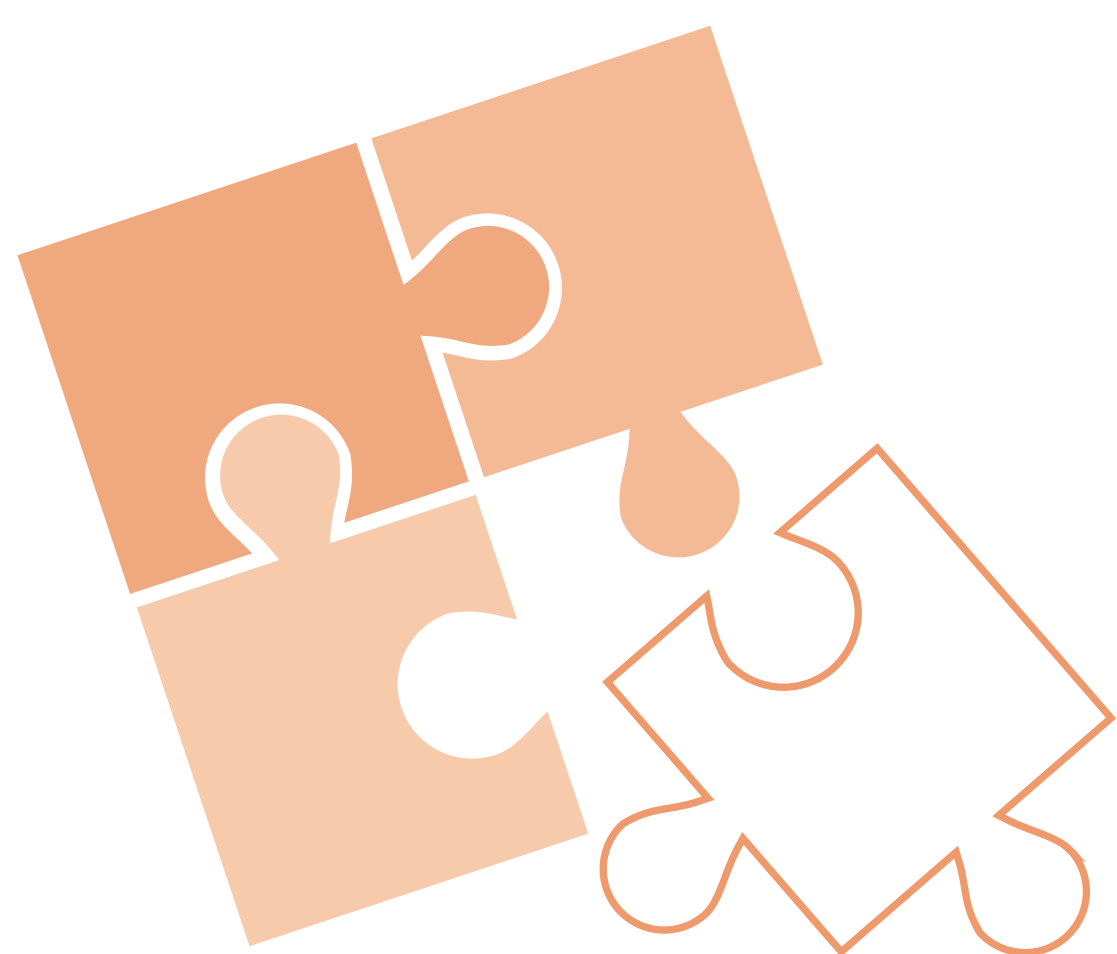
Love it!!!



Thumbs down



There's a piece missing



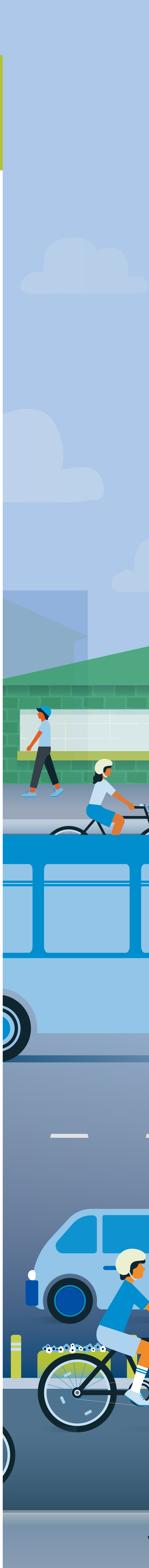
Huh? I don't get it...
How will it work?



Here's a thought...



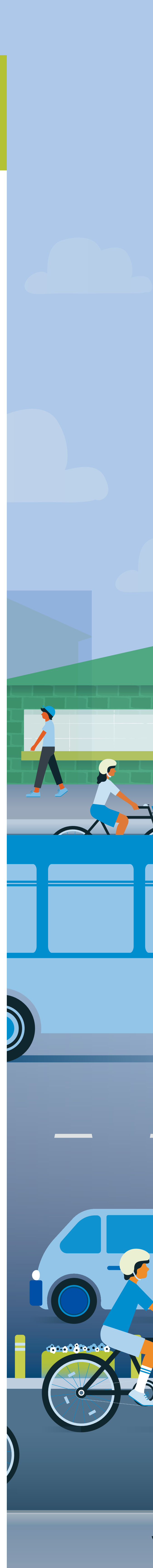
That's surprising!
That's alarming!



Edmonton Bike Plan

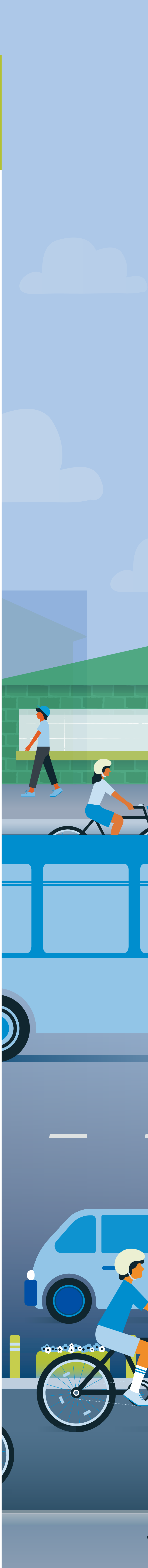
The 2009 Bicycle Transportation Plan identified the following vision:

“Edmonton is a bike-friendly city where more people ride their bikes more often.”



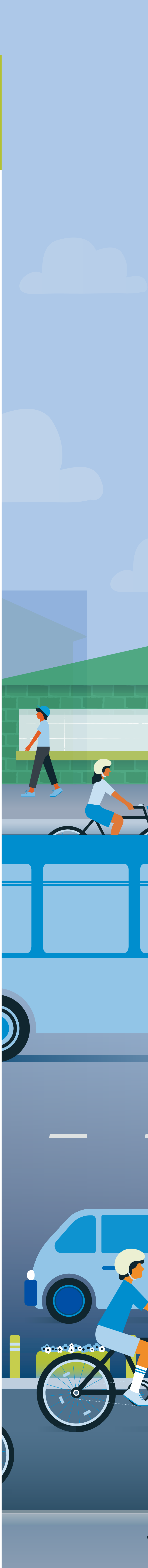
Edmonton Bike Plan

It's 2018 – Is Edmonton currently a bike-friendly city?
Comments and examples are welcome!



Edmonton Bike Plan

IMAGINE – Share the words and phrases that describe your vision for how biking fits into our city’s future.



Edmonton Bike Plan

THANK YOU

for taking the time to attend this event!

There are more opportunities to share your voice in the next phases of the project.



STAY INVOLVED!

Visit us at edmonton.ca/bikeplan to:

- » Complete a survey
- » Sign up for our newsletter for an invitation to our next phase of Workshops on Tradeoffs and Priorities
- » Ask us questions at bikeplan@edmonton.ca

