



## Safety improvements are coming to 118 Avenue!

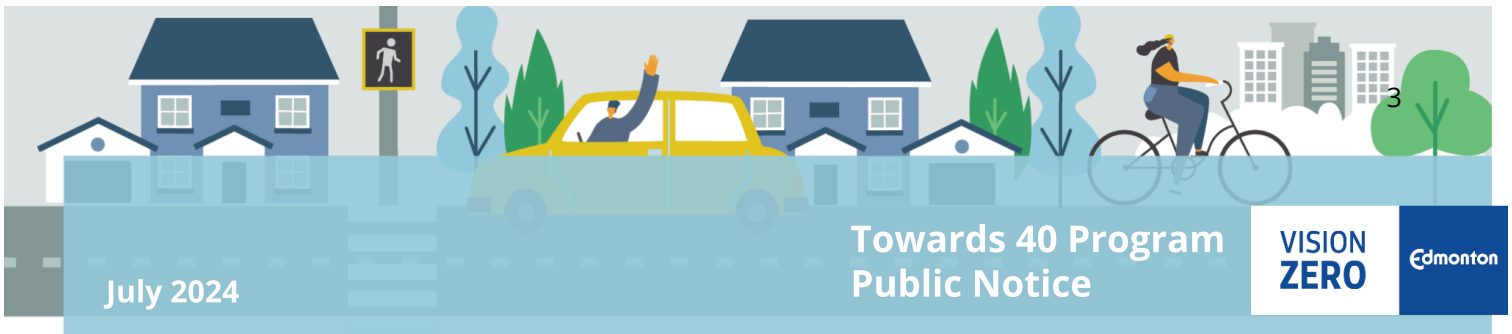
The **Towards 40 program** is focused on improving road safety in areas where speeding and safety issues have been identified to encourage safe driving habits and increase speed limit compliance.

The City will be installing adaptable measures on 118 Avenue, between 106 Street - 109 Street, to improve safety based on the data collected and the feedback heard from stakeholders earlier this year.

**The installation of the adaptable curb extensions and parking location adjustments** are expected to occur in fall 2024, weather dependent.

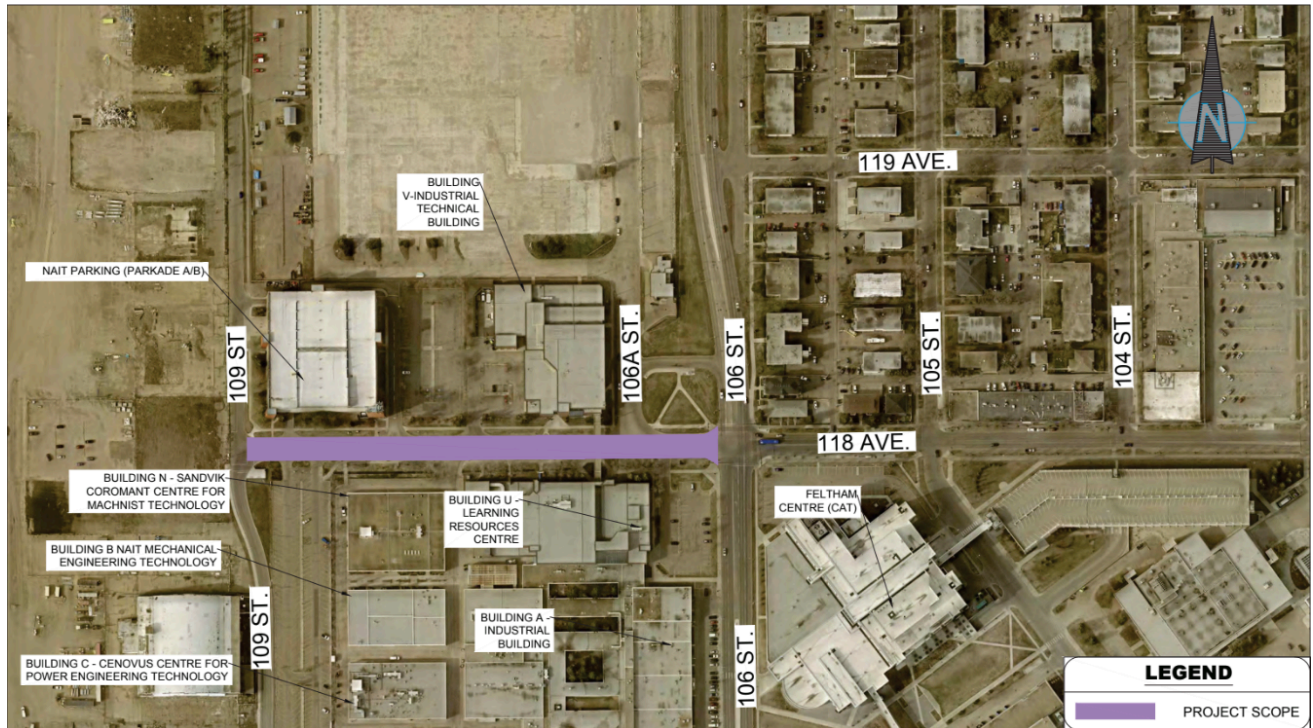
While the roadway will be accessible during installations, please anticipate some impacts, such as restrictions to some on-street parking, and some temporary noise and traffic delays when work crews are on site. Please follow any temporary no-parking signage and traffic flow directions from work crews in the area.

For an overview of what will be installed and the feedback we heard from stakeholders, view the **Background Report, What We Decided Report and the Final Design** at [edmonton.ca/Towards40Projects](https://edmonton.ca/Towards40Projects).



### Map of Project Area

118 Avenue, between 106 Street and 109 Street



### What's next?

After the installation, there will be a period of time for those who use the area to get used to the changes while the City collects traffic data. Stakeholders will have an opportunity to provide feedback on the adaptable measures and their level of comfort travelling in the project areas in the **Evaluation** phase in summer 2025.

For more information about this project and to view the **final design** and **What We Decided report**, scan the QR code or visit [edmonton.ca/Towards40Projects](https://edmonton.ca/Towards40Projects).



**Questions?** Call 311 or email [saferoads@edmonton.ca](mailto:saferoads@edmonton.ca)