

July 2024

## 142 Street Pedestrian/Cyclist Bridge

---

As part of Stage Two of the Terwillegar Drive Expansion Project, construction on the 142 Street Pedestrian/Cyclist bridge will begin the week of July 8. The bridge will be built across Whitemud Drive at approximately 142 Street. It will connect the neighbourhoods of Brookside and Brookview to existing active transportation paths, including a newly built shared pathway that was completed in Stage One of the expansion project. Construction is anticipated to be completed in late 2025. For more information about the bridge design, visit [edmonton.ca/TerwillegarDrive](https://edmonton.ca/TerwillegarDrive)

### Construction Details

Starting in July, early construction work will begin on the bridge which includes:

- Moving equipment to the construction laydown areas
- Earthworks, which includes moving large amounts of dirt to create an area for construction
- Foundation installation and structural concrete pour

### Access

The shared pathway east of 142 Street that connects to Snow Valley will remain open during this work to provide pedestrian access from east to west. 142 Street will remain open during construction. Please see the map on the back of this page for construction areas.

### For more information, please contact

**Ryan Drummond**  
Project Manager, City of Edmonton  
[ryan.drummond@edmonton.ca](mailto:ryan.drummond@edmonton.ca)  
780-691-3388

**Alyssa Dudek**  
Construction Project Manager, Graham  
[alyssa.dudek@edmonton.ca](mailto:alyssa.dudek@edmonton.ca)  
587-689-5836

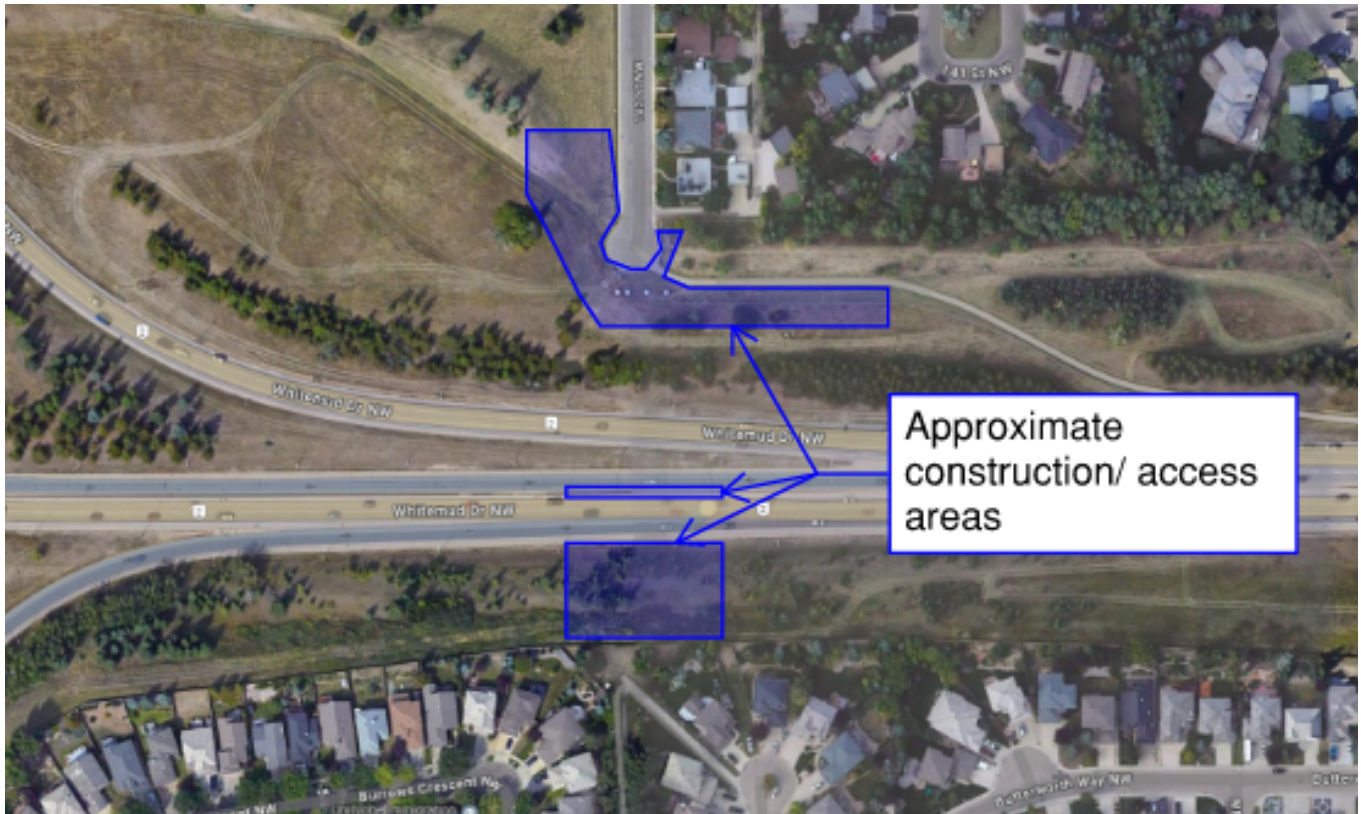


Image 1 - Construction and construction access areas. The top of the image is north.