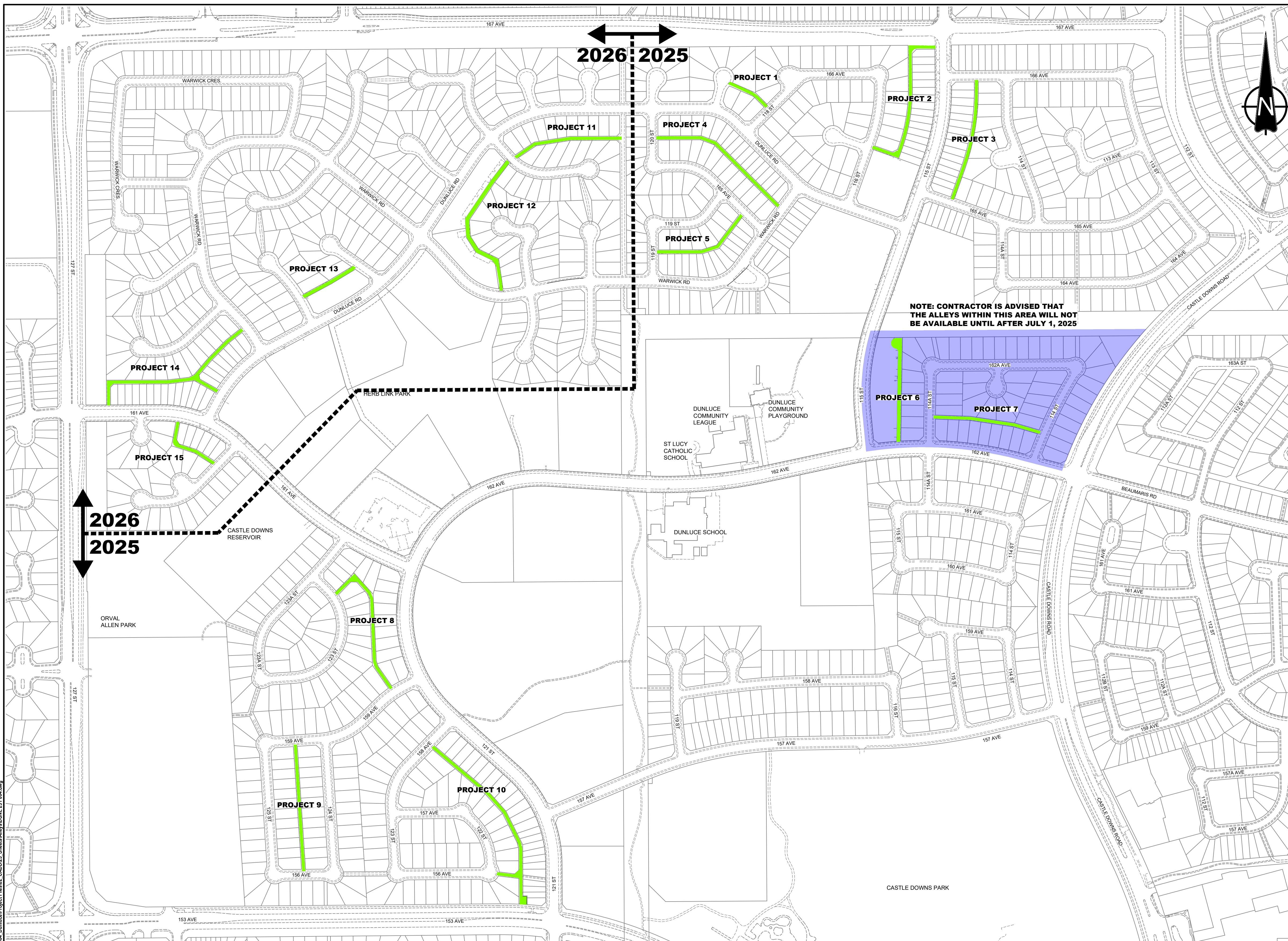


DETAIL LEGEND

- RESIDENTIAL ALLEY
- 100mm 10mm-LT ASPHALT
- 150mm 3-20 GRANULAR
- 175mm 3-63 GRANULAR
- BIAXIAL GEOGRID
- NON-WOVEN GEOTEXTILE
- PREPARED SUBGRADE



NOTE: CONTRACTOR IS ADVISED THAT THE ALLEYS WITHIN THIS AREA WILL NOT BE AVAILABLE UNTIL AFTER JULY 1, 2025


NOTE:
1. ALLEYWAY PHASING AND AVAILABILITY IS DEPENDANT ON ATCO RELOCATION SCHEDULE.

Jeremy Johnson / May 13, 2025 / C:\AS\SK\AC\Projects\16504_Dunluce\Project Files\97_CADD\23_Sheets\Alleys\DUNL 251 004.dwg

Issues / Revisions					
Ltr.#	Date	Author	Review	Check	Description
A	MAY 21, 2025	JJ	NK	SM	ISSUED FOR TENDER
B					
C					
△					
△					
△					

--	--	--	--	--

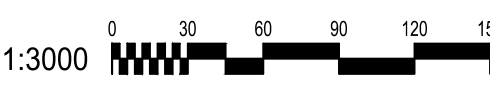
Consultant



Job Number : 16504

FOR INFORMATION ONLY

Branch BUILDING GREAT NEIGHBOURHOODS
Dept INTEGRATED INFRASTRUCTURE SERVICE
Scale 1:3000



Project	DUNLUCE ALLEY RENEWAL
Location	127 ST TO CASTLE DOWNS RD 167 AVE TO 153 AVE
Drawing Title	STAGING PLAN
Drawing Number	DUNL 251 004
Program No	Contract No 2502

