

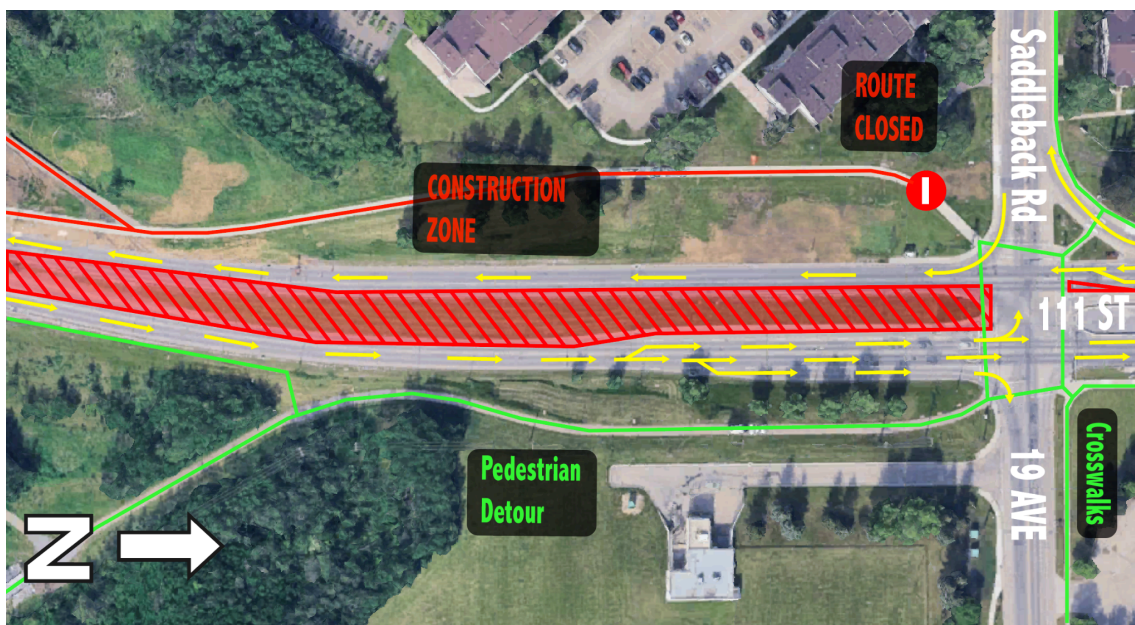
Construction Notice – Median removals and lane closures on 111 Street near 19 Avenue

Beginning **on/around September 29**, Ledcor will remove part of the median on 111 Street between Blackmud Creek and 19 Avenue. This work is anticipated to take approximately two weeks.

For the duration of this work, traffic will be **reduced to one lane in each direction** on 111 Street within the construction zone. Single left and right turn lanes will be maintained at the intersection. Speed limits will be reduced to 40 km/hr. Please see the map below for details.

The removal of the median and paving of the area is to better accommodate 111 Street traffic flow during the next phase of construction.

Map: Lane closures on 111 Street between Blackmud Creek Bridge and Saddleback Road/19 Avenue



What to Expect

Traffic impacts

- Single left and right turn lanes will be maintained at the intersection.
- Speed limits in the work zone will be reduced to 40 km/hr in each direction.

Other impacts

- Work will occur on weekdays between 7:00 a.m. and 5:00 p.m.
- Flaggers will be deployed when work is occurring to direct pedestrians.
- The routes for pedestrians and cyclists will be maintained, and appropriate signage will be installed for the lane closures. The sidewalks will not be impacted.
- Efforts will be made to minimize noise, vibration and dust. Mitigation measures will be implemented to monitor and reduce these impacts.

For More Information

City of Edmonton (general project inquiries)

Visit: edmonton.ca/capitalsw

Email: lrtprojects@edmonton.ca

Call: LRT Projects Information Centre at 780-496-4874 (voicemail)

Ledcor Group of Companies (construction-specific inquiries)

Email: capitalinesouth@ledcor.com

Call: Capital Line South public inquiry line at 780-540-7013 (voicemail)