

PERFORMANCE

This dashboard provides an overview of progress and performance of the Valley Line West (VLW) LRT Project and a summary of work completed by Marigold Infrastructure Partners (MIP) and the City of Edmonton (City).

CUMULATIVE PERFORMANCE

NOTES

COST PERFORMANCE

Measures the cost efficiency of the project

Current cost performance is good. The project remains on budget.

SCHEDULE PERFORMANCE

Measures the schedule status of the project

As of the end of Q1, construction progress as measured by the independent certifier is 16.2%.

SCOPE PERFORMANCE

Measures the current status of scope changes compared to the baseline scope

There have been no significant changes to either MIP's scope of work or other City-contracted scopes of work.

PUBLIC COMMUNICATIONS

Most common public inquiries for the period

The most common public inquiries for the period are related to traffic signage and signals, and construction impacts/access closures.

RECENT PROGRESS - SUMMARY

MIP work in Q1:

During Q1 2024, design and construction activities were ongoing along the VLW LRT alignment. In **Area 8**, work continued on the Lewis Farms Storage Facility (Photo A), including wall panels, vaults and duct banks. In **Area 7**, work continued on the Anthony Henday Drive (AHD) bridge columns (Photo B), with driven steel piles completed on the east approach. In **Area 6**, MIP continued work on the elevated guideway, Misericordia Station (Photo C), and West Edmonton Mall (WEM) Station. As of March, 44 of 46 elevated guideway Y-piers have been completed. Civil drainage work continued in **Area 5** (Photo D), along with streetlight and traffic signal base and conduit installations. Civil drainage and temporary roadworks continued throughout **Areas 2, 3, 4, and 7** in preparation for upcoming construction (Photo E - Area 2). In **Area 9**, MIP continued Gerry Wright Operations & Maintenance Facility (OMF) construction (Photo F), which included foundation work, structural steel, and Overhead Catenary System (OCS) piling.

Hyundai Rotem Company (HRC) work in Q1:

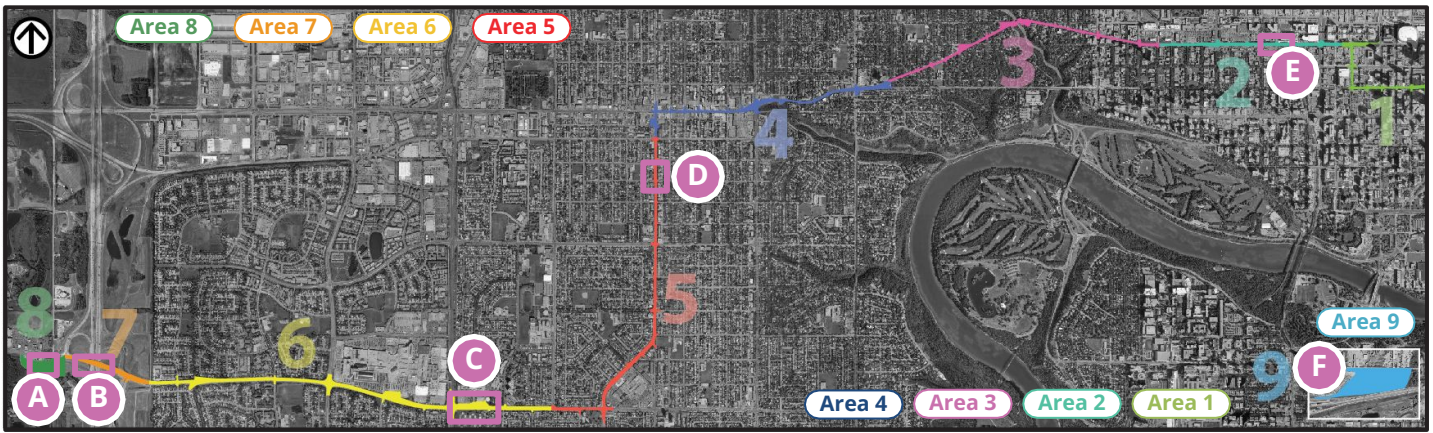
Final design review for the Stage 2 light-rail vehicle (LRV) continued throughout Q1.



Area 8 - Lewis Farms Storage Facility



Area 7 - Anthony Henday Drive Bridge Columns & Piles



Area 6 - Misericordia Station Elevated Guideway Construction



Area 5 - 156 Street/100 Avenue Civil Drainage



Area 2 - 104 Avenue Civil Drainage Installation and Abandonments



Area 9 - Gerry Wright OMF Construction

MILESTONES

AREA	COMPLETED MILESTONES	COMPLETION DATE
5	Utility Complex (UC) 51 piling complete	March 2024
7	AHD bridge west approach first deck span poured, east approach driven steel piles completed	March 2024
LRV	Manufacturing of first LRV commenced	March 2024
AREA	UPCOMING MILESTONES	FORECASTED DATE
All	Piling complete on all UCs	Q3 2024
7	AHD bridge deck complete	Q3 2024
3	SPR reopening	Q3 2024
9	OMF building structural steel erection complete	Q2 2024
LRV	LRV Final Design Review #1 completion	Q2 2024

KEY ACTIVITY 3-MONTH LOOK-AHEAD

The highlights correspond to the areas of the alignment on the map above.

Area 1: Continue drainage work, roadworks, gas main work, and utility relocates on 107 Street.

Area 2: Continue drainage work and roadworks.

Area 3: Continue drainage, roadworks, Glenora Stop grading, OCS foundations.

Area 4: Continue power and telecom connections into signal cabinets, Grovenor Stop construction.

Area 5: Start UC piling and drainage works.

Area 6: Continue roadworks and drainage, elevated guideway segment fabrication and erection, shafts, pile caps, piers, columns, abutments and ramps, OCS foundations, Misericordia Station substructure, WEM straddle beams and column pour. Continue Aldergrove

Stop construction.

Area 7: Complete AHD bridge east approach caps, pier columns, bearings. Continue east abutment slab pour, concrete retaining wall, west approach ramp, abutment, pile caps, track slab.

Area 8: Continue roofing, soil cells, insulated metal wall panels. Start slab rough-ins and install duct banks.

Area 9: Continue grade beams, structural steel installation, metal decking, wall panels, pipeline crossing bridge piles, yard drainage activities, foundation beams for Automatic Vehicle Inspection System (AVIS) building, OCS foundations.

LRVs: Final Design Review continues. Final Design Review #1 completion and Final Design Review #2 ongoing during period. First Article Inspections will commence during Q2.