

167 Avenue & 66 Street Roundabout Road Construction

About the Project

Due to continued growth in northeast Edmonton, the intersection of 167 Avenue and 66 Street requires upgrades to accommodate existing and future traffic volumes.

The communities of Schonsee, McConachie, Ozerna and Matt Berry are adjacent to the project area along 167 Avenue & 66 Street in Northeast Edmonton. These neighbourhoods are existing and developing communities, which are growing through continued investment by private developers, governed by various City of Edmonton Plans.

To support continued growth within these neighborhoods and for future developments, the existing arterial roadway intersection of 167 Avenue & 66 Street is being upgraded to a modern 2-lane roundabout.

A roundabout at 167 Avenue and 66 Street was chosen over a signalized intersection due to a comprehensive traffic analysis. This analysis demonstrated that the roundabout design offers superior traffic flow management and enhanced safety, ensuring smoother and more efficient movement of vehicles. The roundabout design also allows for a simpler staging plan and lower long-term infrastructure costs, while meeting current Canadian roadway design standards. When complete, the intersection will accommodate growth in vehicular traffic and enhance connectivity within the surrounding areas.

This project is led and funded by *Collegewoods II*, on behalf of the City of Edmonton. Infrastructure improvements under this project include the removal of the existing signalized intersection, and construction of new: sewer systems, arterial road surfaces, power and street lighting, shallow utilities, shared pathways, and landscaping.

Construction on 167 Avenue will occur within about 200m to the east and west of 66 Street. Construction on 66 Street will occur from 165 Avenue to 170 Avenue.

Temporary Road Closures

Segments of 167 Avenue and 66 Street are planned to be closed in July 2025 and are expected to be open in November 2025. Detailed information is shown in the table below and shown on the **enclosed temporary road closure and detour information map**.

ROAD CLOSURE	FROM:	TO:	CLOSED FROM:	EXPECTED OPENING:
66 Street	165 Avenue	North of 167 Avenue	July 3, 2025	November 2025*
167 Avenue	McConachie Boulevard	West of 66 Street	July 3, 2025	November 2025*

*Re-opening is subject to approval from the City of Edmonton.

167 Avenue & 66 Street Roundabout Road Construction

Temporary Detours

A detour information map is enclosed. Traffic delays may be experienced due to the partial road closure of the 66 Street and 167 Avenue intersection. The intersection will remain partially open with a traffic diversion.

- Traffic travelling east on 167 Avenue will be routed to 66 Street northbound.
- Traffic travelling south on 66 Street will be routed to 167 Avenue westbound.
- 167 Avenue will be fully closed between 66 Street and McConachie Boulevard.
- 66 Street will be fully closed between 165 Avenue and 167 Avenue

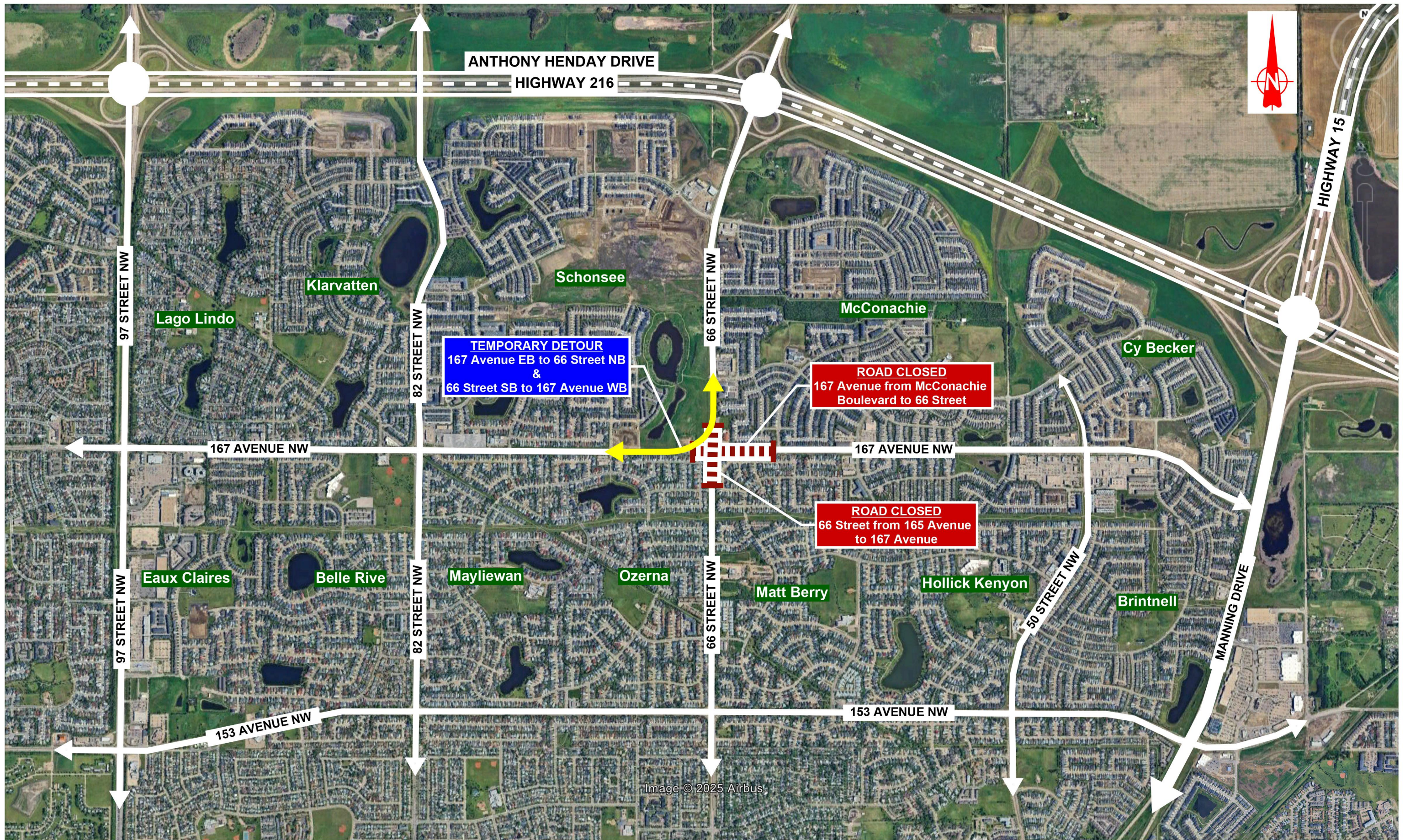
During the intersection road closure, unaffected alternate routes are available by utilizing nearby arterial roadways. Detour signage will be in place for the duration of construction.

Local Access

Access will be provided to properties affected by the road closures.

For More Information

Engineering Consultant: Scheffer Andrew Ltd.
Phone: 780-732-7800
Email: edmontonweb@schefferandrew.com



ANTHONY HENDAY DRIVE
HIGHWAY 216



HIGHWAY 15

97 STREET NW

Klarvatten

Lago Lindo

82 STREET NW

TEMPORARY DETOUR
167 Avenue EB to 66 Street NB
&
66 Street SB to 167 Avenue WB

Schensee

66 STREET NW

ROAD CLOSED
167 Avenue from McConachie
Boulevard to 66 Street

McConachie

Cy Becker

167 AVENUE NW

ROAD CLOSED
66 Street from 165 Avenue
to 167 Avenue

167 AVENUE NW

97 STREET NW

Eaux Claires

Belle Rive

82 STREET NW

Mayliewan

Ozerna

66 STREET NW

Matt Berry

Hollick Kenyon

Brintnell

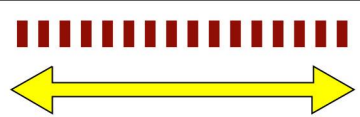
153 AVENUE NW

153 AVENUE NW

50 STREET NW

MANNING DRIVE

Image © 2025 Airbus



INDICATES TEMPORARY ROAD CLOSURES
INDICATES TEMPORARY DETOUR ROUTE

DETOUR MAP
TEMPORARY ROAD CLOSURES

Roundabout Configuration

