

## Construction Notice

### 103A Avenue and 99 Street Pedway Project

Construction continues near City Hall for the 99 Street underground pedway connecting Churchill LRT Station to the Station Lands development north of 104 Avenue.

**Starting Tuesday, August 5**, vehicle access to the City Hall parkade will be via 102A Avenue. The current entry from the north via 103A Avenue will be closed. This detour is anticipated to be in place until late spring 2026, and will facilitate the next stage of pedway construction as the excavation moves along 99 Street. The overall project is anticipated to be completed by the end of 2026.

Onsite wayfinding signage will help pedestrians and cyclists continue to navigate the area safely. Access to the Royal Alberta Museum will be maintained via the 97 Street entrance, including accessible drop-off/pick-up.

A traffic accommodation plan showing this change is attached.

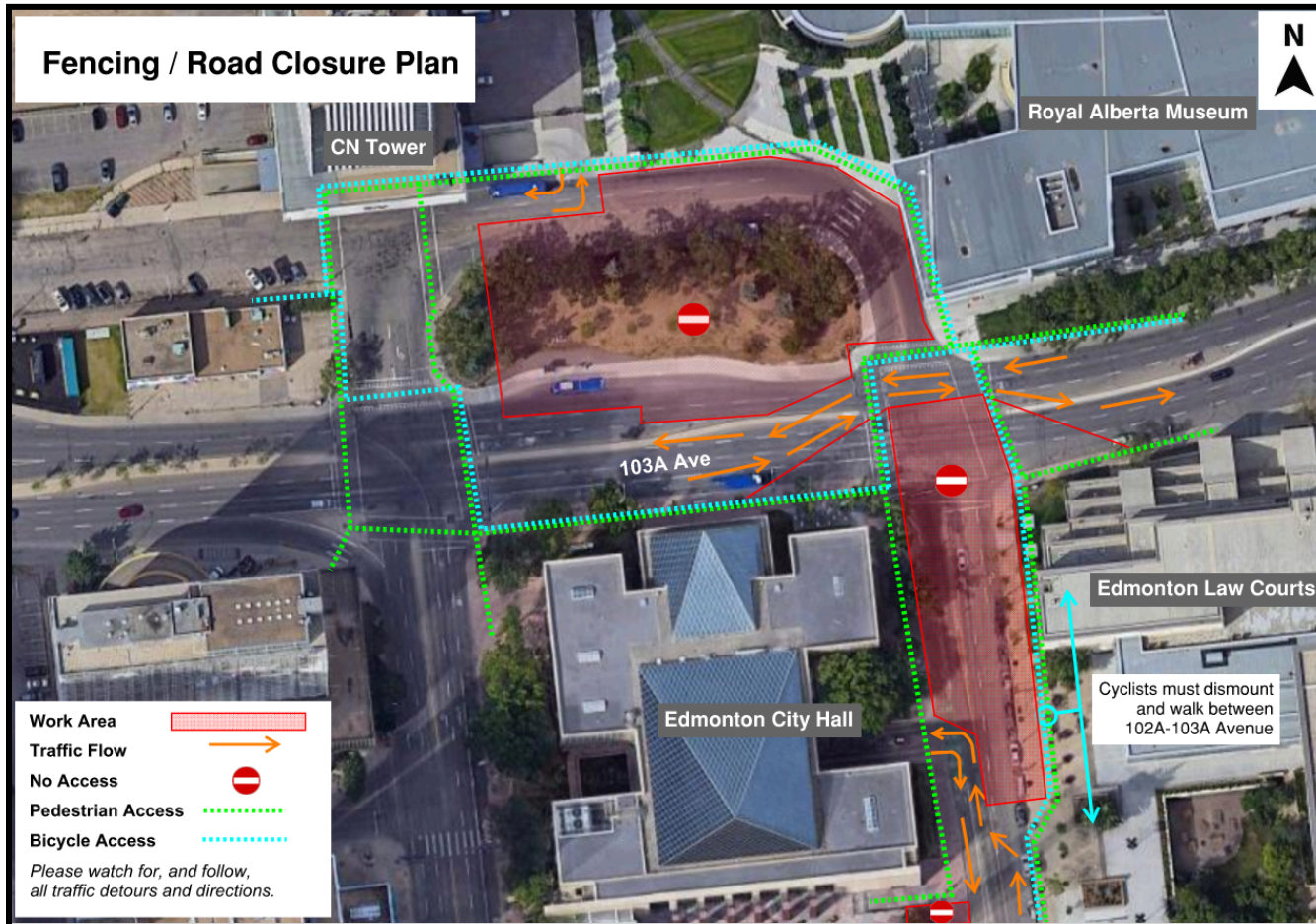
#### For more information

Visit: [edmonton.ca/103AAvenue](https://edmonton.ca/103AAvenue)

Email: [lrtprojects@edmonton.ca](mailto:lrtprojects@edmonton.ca)

Call: LRT Projects Information Centre at 780-496-4874 (voicemail) or 311





## For more information

Visit: [edmonton.ca/103AAvenue](http://edmonton.ca/103AAvenue)

Email: [lrtprojects@edmonton.ca](mailto:lrtprojects@edmonton.ca)

Call: LRT Projects Information Centre at 780-496-4874 (voicemail) or 311

