



EDMONTON FIRE RESCUE SERVICES

SIDEWALK PATIO CAFÉ GUIDELINES

Site Plan Requirements:

1. Dimensions of the sidewalk café area (in meters).
 - a) Seating Layout.
 - b) Show details of substantial architectural, décor and service items – these are areas that will not be occupied by a person, example planters, pillars, columns, bar counters, free standing coolers, etc.
2. Dimensions of Exit(s) – from the business into café area and out of café area.
Note: If an exit from the business is equipped with panic hardware (required if business has an occupant load of >100 people) and the exit leads to the patio, then the patio exit is required to be equipped with panic hardware as well. (Show each exit in millimeters)
3. Location of Fire Department Connections (Siamese) – See clearance requirements below.
4. Fire Hydrant - If located in close proximity to proposed sidewalk café – See clearance requirements below.

Occupant Load Calculation:

Edmonton Fire Rescue Services requires notice of 5 business days for site inspection (sidewalk patio) and occupant load calculation. Call 780-496-3628 to book inspection.

Reference: Fire Code Bulletin FCB-08-02:

SPECIAL CONDITIONS: PATIOS – DECKS – ROOFTOPS & BEER GARDENS

The occupant load of a building may be affected when licensed establishments incorporate exterior facilities such as a patio, deck, rooftop or beer garden for patron use. Exterior facilities usually have fences or similar barriers placed around the perimeter to restrict patron access and egress. Some establishments can more than double the capacity of the original building on either a permanent or temporary basis.

The issue now becomes how do exterior facilities get approved?

An exterior facility is not specifically addressed in the ABC. Therefore, it becomes a “use” issue and is regulated by the fire authority. In these cases, the patio, deck or rooftop can have an impact on the means of egress and life safety of occupants in the main building. In no case should the required exits from the main building empty into an enclosed patio or contained exterior space.



In inclement weather, occupants from the outside would move into the building. Is there adequate exit capacity for the combined occupant load?

If the answer is yes, then the exterior occupant load has no impact on exit capacity requirements. If the answer is no, then the owner must decide whether to limit the number of patrons on the exterior, or provide additional exits to achieve the required exit capacity. Exterior facilities with separate gates or exits may also pose the same exit capacity concerns.

Therefore:

1. Where exterior facilities are enclosed requiring exiting through the building the egress system and exit capacity must provide for the additional persons using the exterior enclosures.
2. Where exterior facilities are not enclosed and the building and the exterior facility are separate the capacity of the exterior facility should be determined by using the operational occupant load calculation.
3. Where exterior facilities have a fenced enclosure with access gates:
 - a) The capacity of the exterior facility is determined by the operational occupant load calculation, and
 - b) The exit capacity of the gate openings.

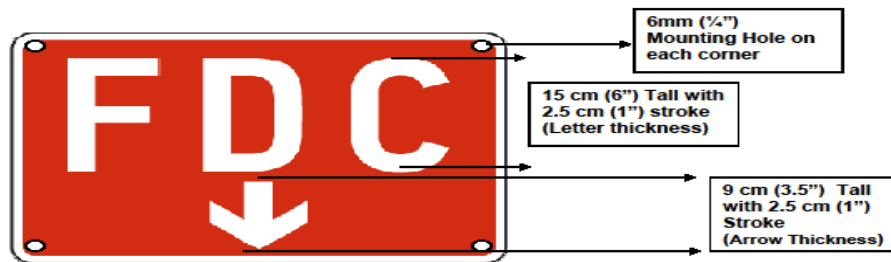
Applicant shall be aware that the operational occupant load of the business and the operational occupant load of the sidewalk patio are separate. Applicant shall also be aware that, as stated above, the occupants of the patio area are not permitted to move inside the building in inclement weather, if the business is at capacity.

Example – Business has an Operational Occupant Load of 100 and a Sidewalk Patio Occupant Load of 32. If the business is at capacity, the patio patrons are not permitted to occupy space inside the business. If this occurs they may be subject to fines under the Alberta Fire Code.



If building has a Fire Department Connection (Siamese)

Ensure a FDC Sign is mounted on the building.

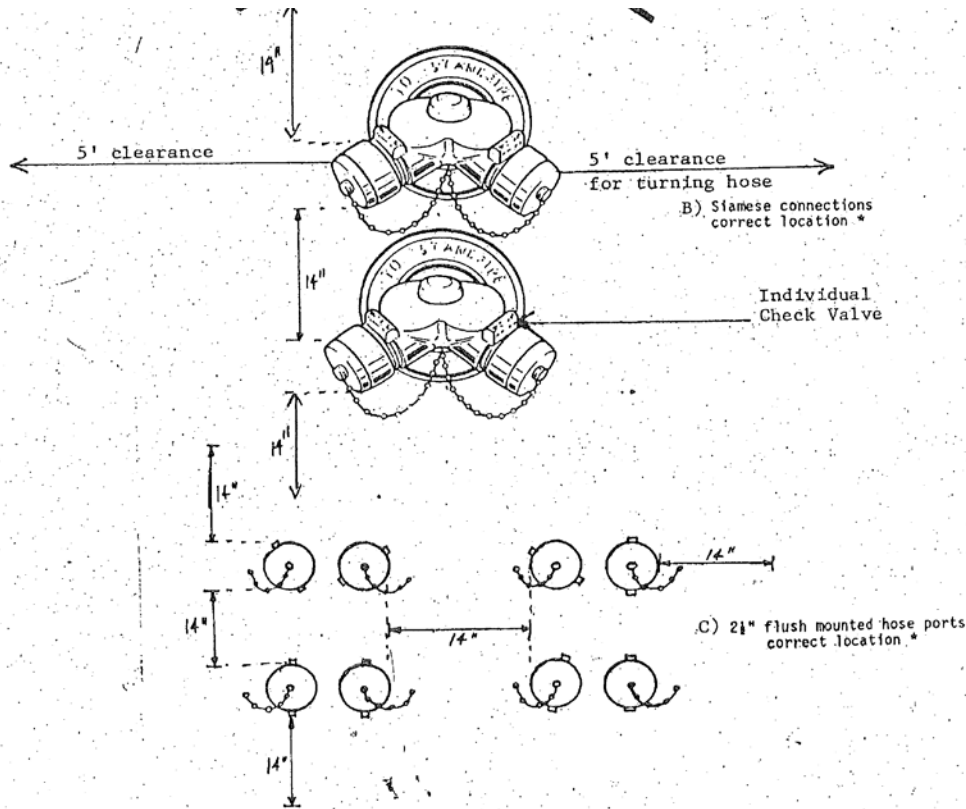


FDC (Fire Department Connection) Sign Details

- Fire department connections should be identified by a permanent approved sign which must have the letters FDC at least 15 cm (6") high with 2.5 cm (1") stroke in **white text on a red background**.
- Sign Dimensions – 46 cm X 30 cm (18" X 12")
- Sign Material - Rust free aluminum.
- Sign to be mounted **NO LOWER** than 2.5m. (8 feet)



Ensure Clearance to FDC is maintained



- * a) Provide minimum 14" clearance (in all directions) for Fire Department wrenches (Cases B & C) and 5' laterally in Case B above.
- b) Hose connections shall not be located more than 4 feet above grade.
- c) All Fire Department connections to have individual check valves.



Ensure Clearance to Hydrant is maintained (if hydrant located in close proximity to business)

