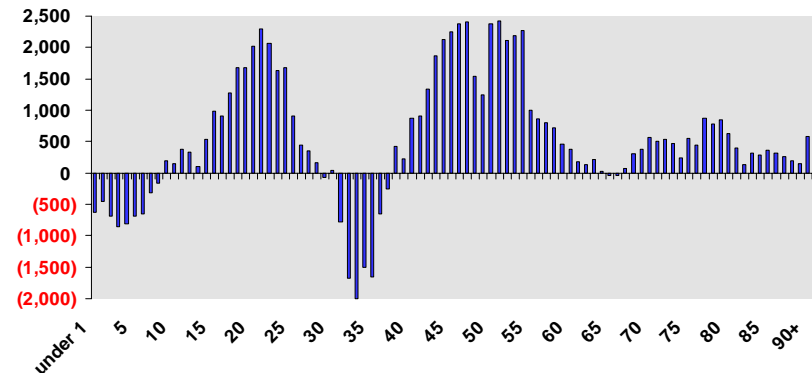


2001 Edmonton Demographic Profile

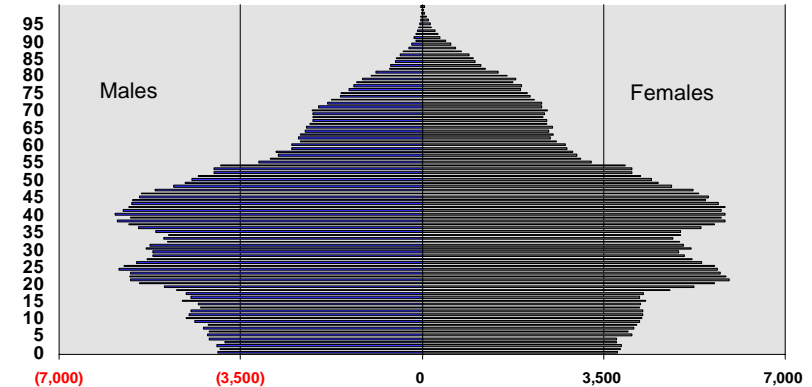
The City of Edmonton's 2001 population increased by 49,800 since the 1996 census. Migration figures are not available at the municipal level but data for the Edmonton CMA (census metropolitan area), shows that 63% of the CMA's increase was from net-migration with 37% from natural increase. The City's age structure changed since 1996 with growth in young adults, people aged in their forties to early fifties, and in people aged from the late 60s and older. The number of children under ten and adults in their 30s declined. Growth in the number of young adults through migration and the maturing of the late teen cohort during the late 90s has resulted in an age pyramid with two peaks: one, the familiar "baby boom" generation aged between 35 and 54, and the other the "echo generation", the children of the 'boomers' now young adults.

City of Edmonton Population Change by Age, 1996-2001



Source: 2001 Census of Canada, Statistics Canada

City of Edmonton Population by Age and Gender, 2001



Source: 2001 Census of Canada, Statistics Canada

Households

The number of households (an occupied dwelling unit) increased by 25,285 between 1996 and 2001 reaching 265,335. There is a continuing trend towards smaller household size with an increase in the number of one and two person households. There are fewer married couples as a share of all family households than in 1996 (70% compared with 73%), more common-law couples and more lone-parent families (18% of total). Married couples with children at home comprise the largest group of family households with 42% of total.

A slight majority, (51%) of households live in single detached houses, with apartment buildings housing a further 32%, up from 30% in 1996.

Half of Edmonton's population aged five or older lived at the same residence between 1996 and 2001. The remainder moved to their 2001 census address either from elsewhere in Edmonton (32%), Alberta (7%), Canada (7%) or outside Canada (3%).

Education

Some 64% of Edmonton's population aged over 20 has education beyond grade 12 with 13% having a trades certificate or diploma, 24% having attended college (with and without a certificate) and 27% having attended university (with 19% holding a bachelor's degree or higher). The largest change from 1996 saw the share of those holding a trades certificate increase from 3% to 13% in 2001.

Income

Average household income for the year 2000* for Edmonton was \$57,360 – a 23% increase in nominal terms from 1995 or 11% when adjusted for inflation. There has been growth in the share of households in the higher income groups with 29% of households having income higher than \$70,000 compared with 19% in 1995.

Occupation and Industry

The largest occupation group is sales and service with 26% of the labour force. The largest industry group is retail and wholesale trade which employs 17% of the labour force with healthcare and social assistance second with 10%.

*The census reported income for 2000.

City of Edmonton

Population by Age, 2001

Edmonton	People	% Total		
Total Population	666,100			
Children 0 - 14	123,255	19		
Youth 15 - 19	46,170	7		
Adults 20 - 64	418,870	63		
Seniors 65+	77,805	12		
Age Groups	Males	Females	Total	% Total
0-4	19,690	18,930	38,620	6
5-9	20,955	20,450	41,405	6
10-14	22,080	21,150	43,230	6
15-19	23,345	22,825	46,170	7
20-24	28,175	28,845	57,020	9
25-29	26,910	26,230	53,140	8
30-34	25,350	25,010	50,360	8
35-39	27,750	27,575	55,325	8
40-44	28,530	28,630	57,160	9
45-49	25,345	25,435	50,780	8
50-54	20,640	20,650	41,290	6
55-59	14,200	14,995	29,195	4
60-64	11,820	12,780	24,600	4
65-74	19,970	23,295	43,265	6
75+	12,790	21,750	34,540	5

Population by Mobility Status

	People	% Total
Total Population Resident More than 5 Years	618,450	
Non-Movers	306,720	50
Moved from elsewhere in Edmonton	200,920	32
Moved from elsewhere in Alberta	45,800	7
Moved from elsewhere in Canada	43,470	7
Moved from outside Canada	21,540	3

Source: 2001 Census of Canada, Statistics Canada

As a result of rounding, totals may differ slightly from table to table and percentages may not add up to one hundred.

Ten Largest Ethnic Origins

Ethnic Origin	Single Response	Multiple Response	Total Response
Canadian	69,145	84,865	154,010
English	25,720	112,385	138,105
Scottish	12,285	96,250	108,535
German	25,915	75,500	101,415
Irish	8,875	82,715	91,590
Ukrainian	32,670	52,960	85,630
French	9,400	63,295	72,695
Chinese	36,295	6,585	42,880
Polish	10,845	27,275	38,120
North American Indian	8,450	19,045	27,495

Note: A multiple response indicates two or more ethnic origins. Sum of specific groups is not equal to total population due to multiple counts.

Households by Household Size

Number of People	Households	% of Total
1 person	76,990	29
2 persons	84,800	32
3 persons	41,170	16
4-5 persons	54,165	20
6 or more persons	8,210	3
Total	265,335	100

Family Households

Family Type	Households	% of Total
Married couples	123,130	
Without children at home	49,160	28
With children at home	73,970	42
Common-law couples	21,305	
Without children at home	13,650	8
With children at home	7,655	4
Total lone-parent families	32,515	
Female parent	26,690	15
Male parent	5,825	3
Total	176,950	100

City of Edmonton

Population 15 and Over by Marital Status

Marital Status		% of Total
Never legally married (single) (includes common law relationship)	194,450	36
Legally married (and not separated)	249,380	47
Separated, but still legally married	17,465	3
Divorced	45,635	9
Widowed	27,070	5
Total (excludes common law relationships)	534,000	100
In a common law relationship*	42,720	

*Common-law partners may be of any marital status other than "legally married and not separated".

Household Income*

Income Range	Households	% of Total
Under \$10,000	16,795	6
\$ 10,000 - \$19,999	32,795	12
\$ 20,000 - \$29,999	31,525	12
\$ 30,000 - \$39,999	31,325	12
\$ 40,000 - \$49,999	28,850	11
\$ 50,000 - \$59,999	25,160	9
\$ 60,000 - \$69,999	22,055	8
\$ 70,000 - \$79,999	17,980	7
\$ 80,000 - \$89,999	14,325	5
\$ 90,000 - \$99,999	11,130	4
\$100,000 and over	33,390	13
Average household income \$	57,360	100

*Income for year 2000

Source: 2001 Census of Canada, Statistics Canada
As a result of rounding, totals may differ slightly from table to table and percentages may not add up to one hundred.

Housing by Period of Construction

Period of Construction	Units	% of Total
Period of construction, before 1946	13,565	5
Period of construction, 1946-1960	48,305	18
Period of construction, 1961-1970	50,620	19
Period of construction, 1971-1980	73,155	28
Period of construction, 1981-1985	30,845	12
Period of construction, 1986-1990	16,100	6
Period of construction, 1991-1995	16,680	6
Period of construction, 1996-2001	16,075	6

Occupied Dwellings by Structural Type

Dwelling Type	Units	% of Total
Single-detached house	136,600	51
Semi-detached house	10,065	4
Row house	26,880	10
Apartment, detached duplex	5,060	2
Apartment, five or more storeys	23,025	9
Apartment, fewer than five storeys	61,080	23
Movable dwelling	2,630	1
Occupied Private Dwellings by Tenure		
Owned	157,695	59
Rented	107,645	41
Total	265,340	100

City of Edmonton

Population 20 Years and Over by Highest Level of Schooling

Level of Schooling	People	% of Total
Less than grade 9	31,735	7
Grades 9 to 13	143,885	29
Without high school graduation certificate	91,420	19
With high school graduation certificate	52,465	11
Trades certificate or diploma	61,085	13
College	119,155	24
Without certificate or diploma	36,285	7
With certificate or diploma	82,870	17
University	132,335	27
Without degree	38,980	8
Without certificate or diploma	28,100	6
With certificate or diploma	10,880	2
With bachelor's degree or higher	93,355	19

Labour Force by Occupation Group

Occupation	People	% Total
Sales and service occupations	94,655	26
Business, finance and administration	68,185	18
Trades, transport and equipment operators and related	60,980	16
Management occupations	36,385	10
Social science, education, government service and religion	31,325	8
Natural and applied sciences and related	27,175	7
Health occupations	21,515	6
Processing, manufacturing and utilities	14,555	4
Art, culture, recreation and sport	9,955	3
Primary industry	6,205	2
Total	370,935	100

Labour Force by Industry

Industry Group	People	% Total
Retail and Wholesale Trade	61,900	17
Healthcare and social assistance	38,525	10
Manufacturing	31,920	9
Accommodation and food services	30,035	8
Professional, scientific and technical services	27,415	7
Educational services	27,105	7
Construction	26,350	7
Public administration	23,000	6
Other services (except public administration)	20,100	5
Transportation and warehousing	18,270	5
Administrative and support, waste management	17,095	5
Finance and insurance	12,890	3
Information and cultural industries	10,010	3
Arts, entertainment and recreation	7,775	2
Real estate and rental and leasing	7,020	2
Mining and oil and gas extraction	6,640	2
Utilities	2,670	1
Agriculture, forestry, fishing and hunting	1,875	1
Total	370,595	100

Source: 2001 Census of Canada, Statistics Canada

As a result of rounding, totals may differ slightly from table to table and percentages may not add up to one hundred.