

Eastglen Leisure Centre - Process



Summer 2015 – Consultation confirms needs of facility users and identifies solutions to optimize use of facility, as identified in the Community Consultation Summary Report.

Fall 2016 – Master Plan process initiated to provide direction for the renewal of Eastglen.

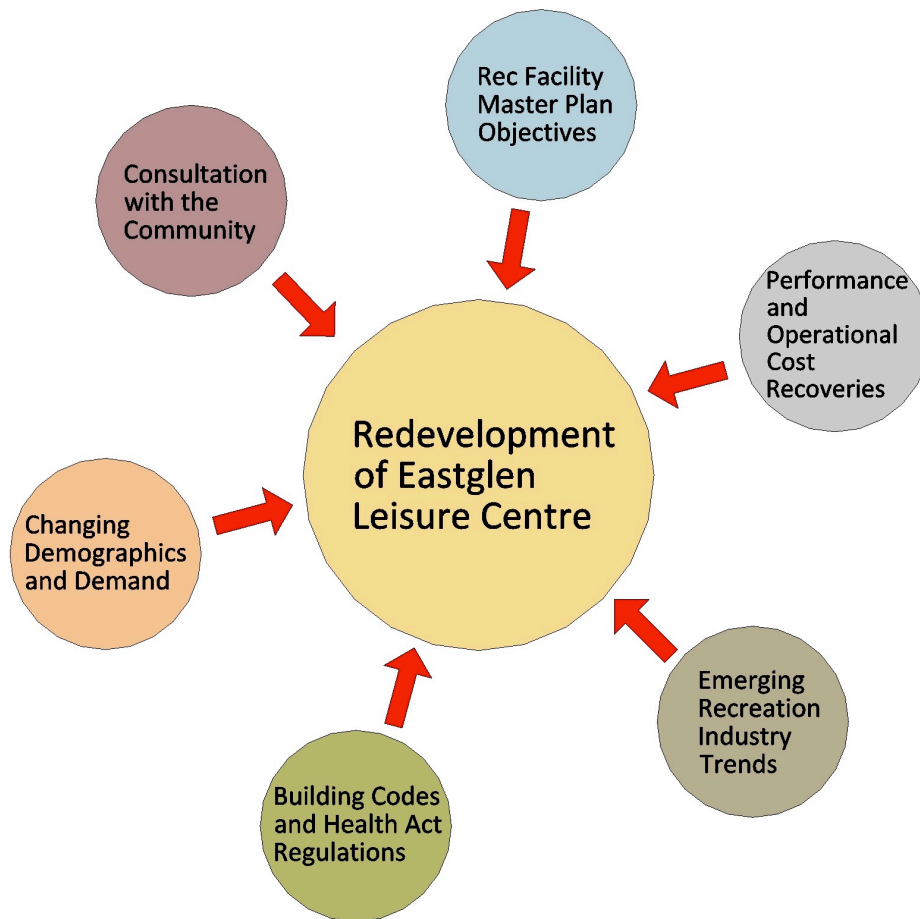
Winter 2017 – Public and stakeholder consultation confirms program priorities and emerging needs as identified in What We heard Report.

- What We Heard Report informs the development of the Master Plan

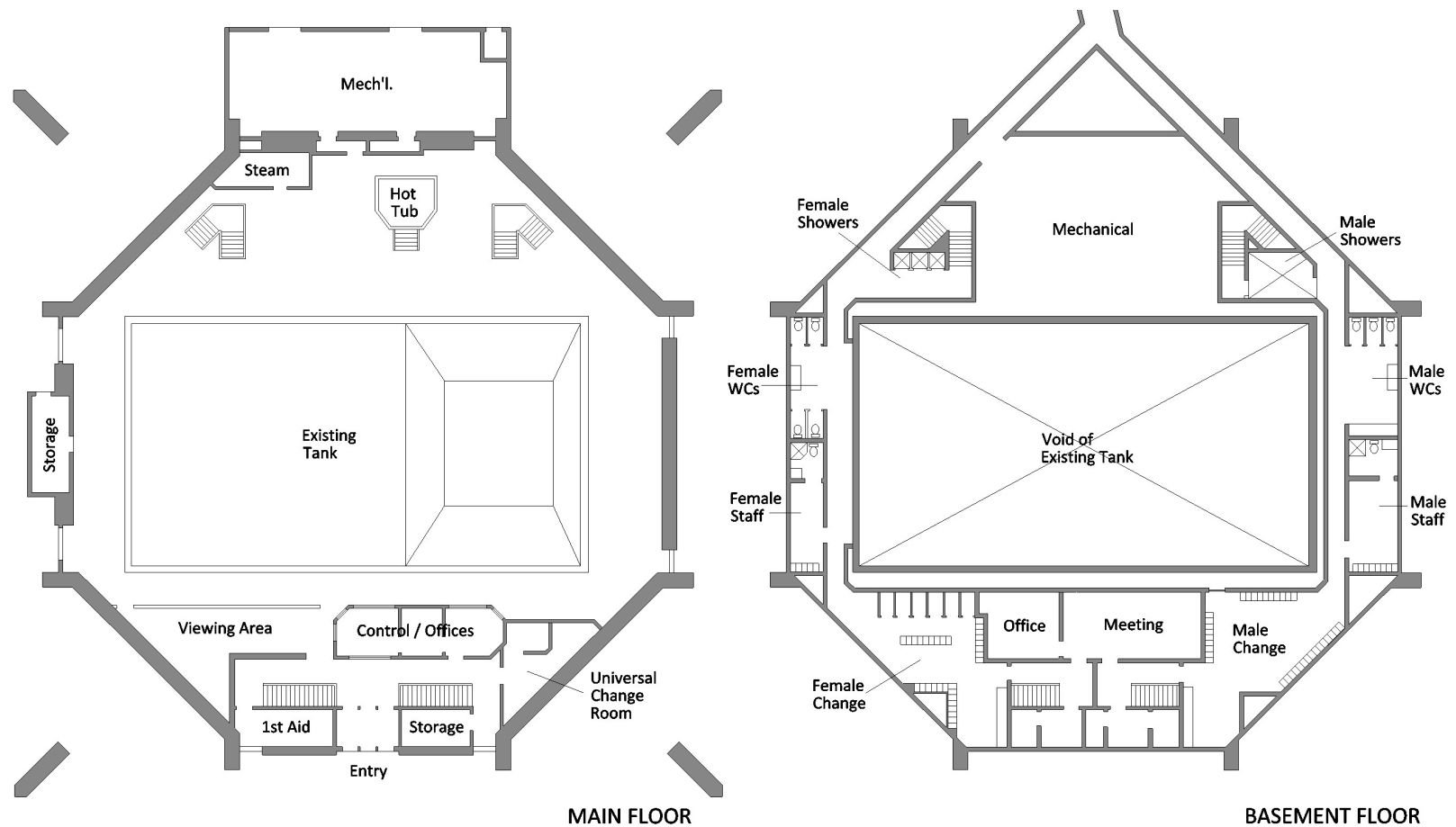
Spring 2017 – Draft Master Plan shared at open house

- Stakeholder and public feedback will be used to finalize Master Plan

Eastglen Leisure Centre – Influencing Factors

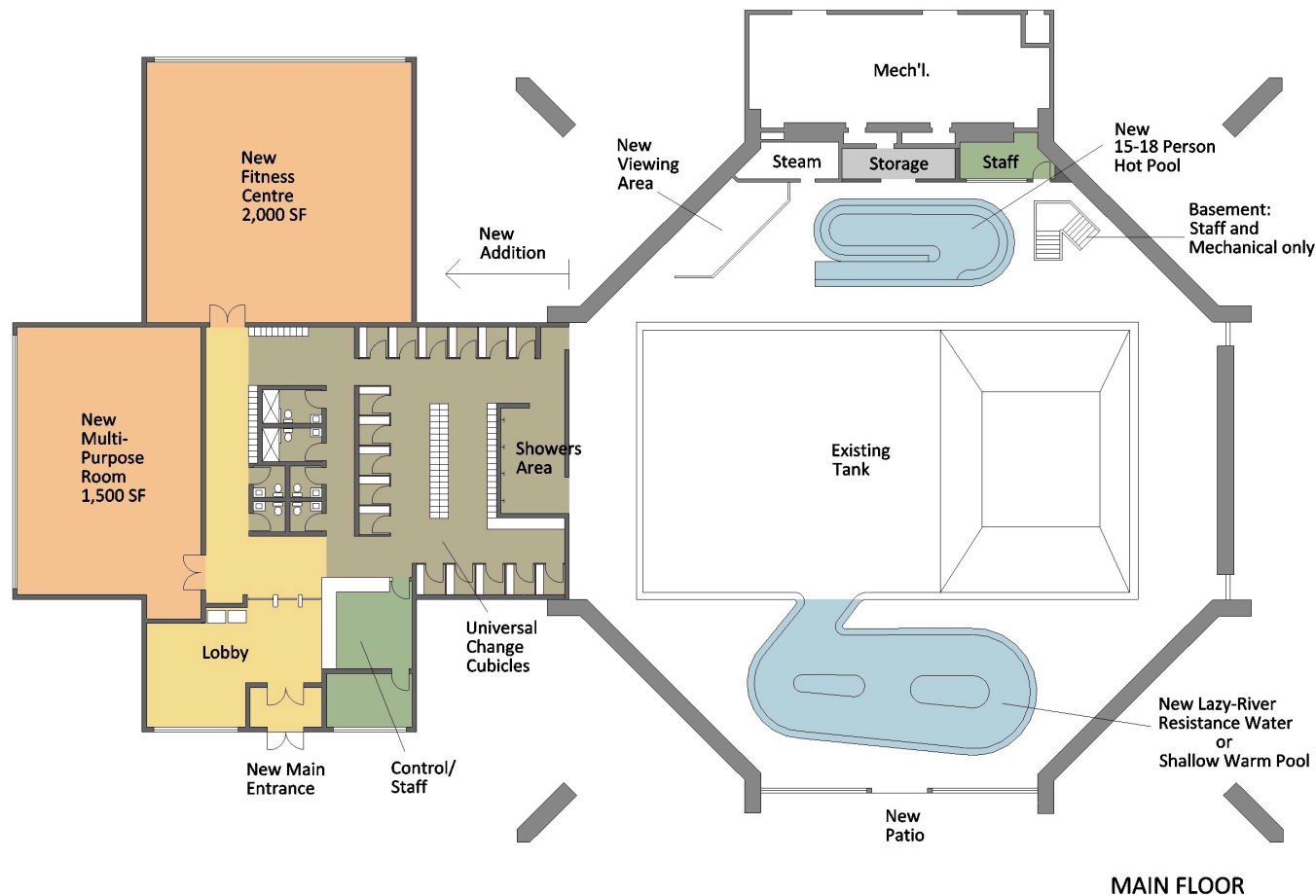


Eastglen Leisure Centre – Existing Floor Plans



Eastglen Leisure Centre – What We Heard

Three options were shared at the first open house with Option 3 receiving the most support at 75%. This option shown below, proposed an expansion to include the fitness centre, multi-purpose space and universal change rooms.



Eastglen Leisure Centre – Feedback Summary

Eastglen Master Plan Feedback Summary: What We Heard

We asked you to rank a list of five potential amenity changes that were most important to you. Following are the top 3:



Addition of a fitness centre came out on top – was ranked No. 1 by 33%, and nearly two-thirds ranked it in their top two.

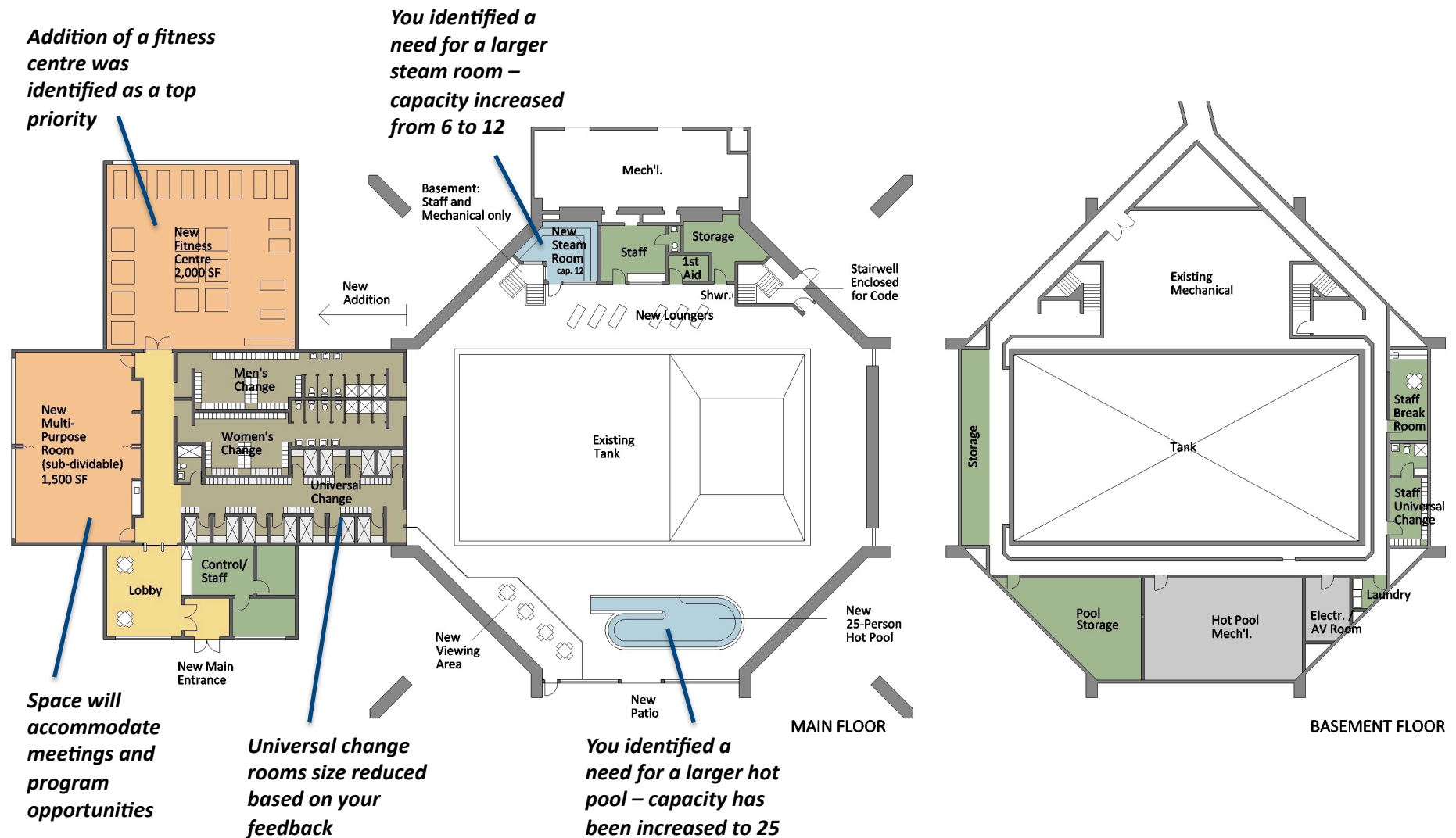


Increasing accessibility (universal change room, elevator) – was ranked No. 1 by 22%, and ranked in the top two by one-third of people surveyed.



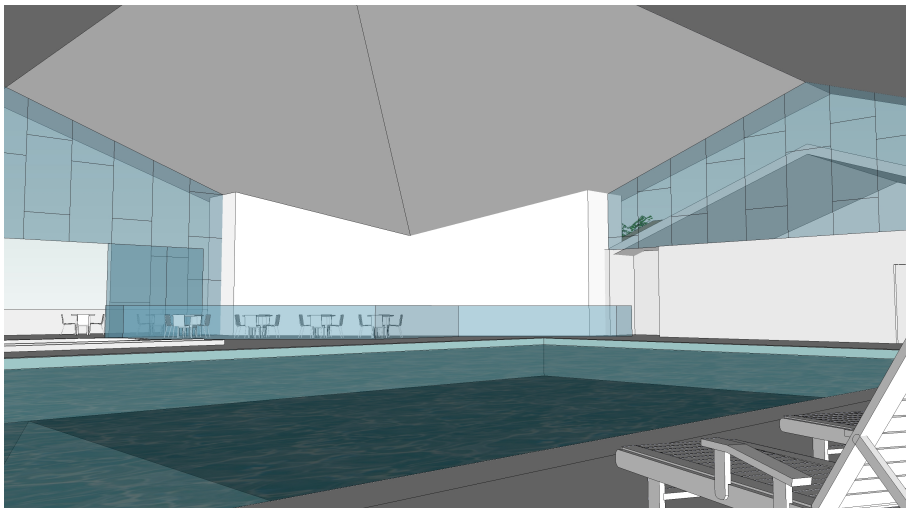
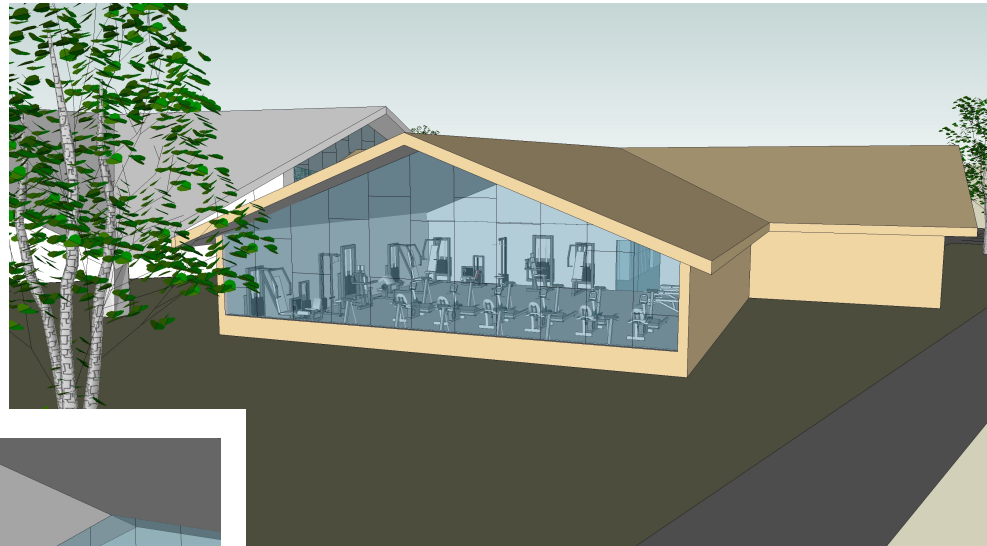
Addition of a larger hot pool – was ranked No. 1 by 20%, and ranked in the top two by nearly half the people surveyed.

Eastglen Leisure Centre – Preferred Concept Option



Eastglen Leisure Centre – Preferred Concept Option

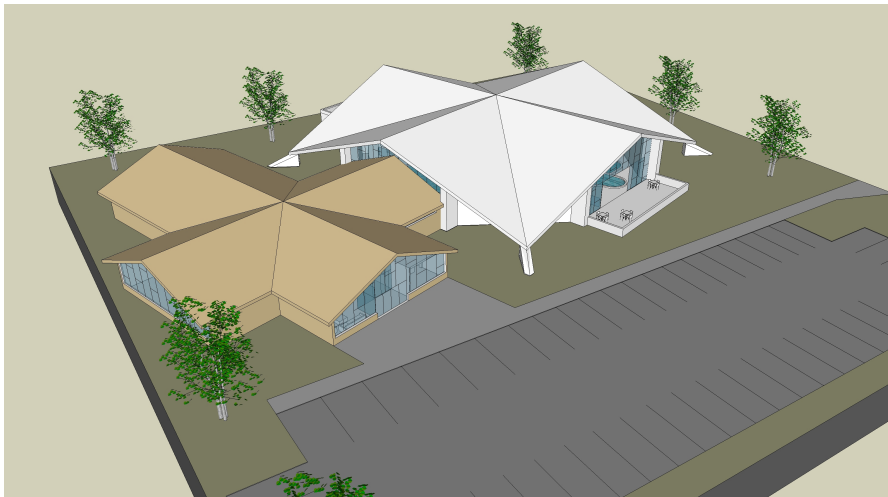
This option has been revised to reflect your input at the first open house. To the right, the new fitness centre at 2,000 sf would feature 20-25 exercise stations, a high ceiling and views to the outside.



To the left, a view of the pool interior featuring the new 25-person hot pool with ramp and new viewing area both opening to the replacement patio. Also shown are the entrances to the new universal change area and the men's and women's change rooms.

Eastglen Leisure Centre – Preferred Concept Option

To the right, the new addition (in gold tone) could match the character of the original building and the scale of surrounding neighbourhood buildings. In the foreground, the former front entry would become the location of the new patio area.



To the left, an aerial view of the new addition. Note that the entrance would be re-located to the new portion of the building and the old entrance would become the new patio area. Parking stalls will be added but the large expansion footprint will limit how much more parking can be accommodated on the site.