

WALTERDALE BRIDGE REPLACEMENT

PROJECT UPDATE

(August 2014)

After nearly 100 years, the Walterdale Bridge has reached the end of its service life. A \$155 million replacement project is under construction, with the new bridge expected to open in late 2015. The current bridge will be removed in 2016.

CONSTRUCTION

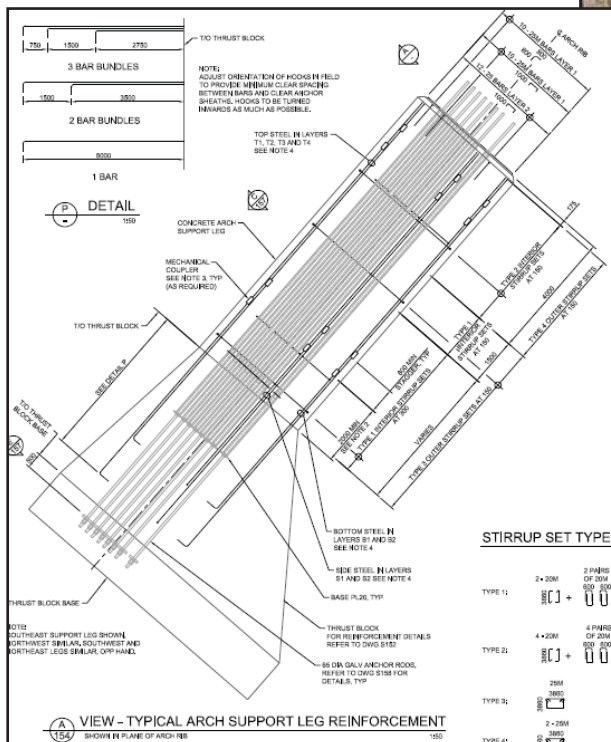
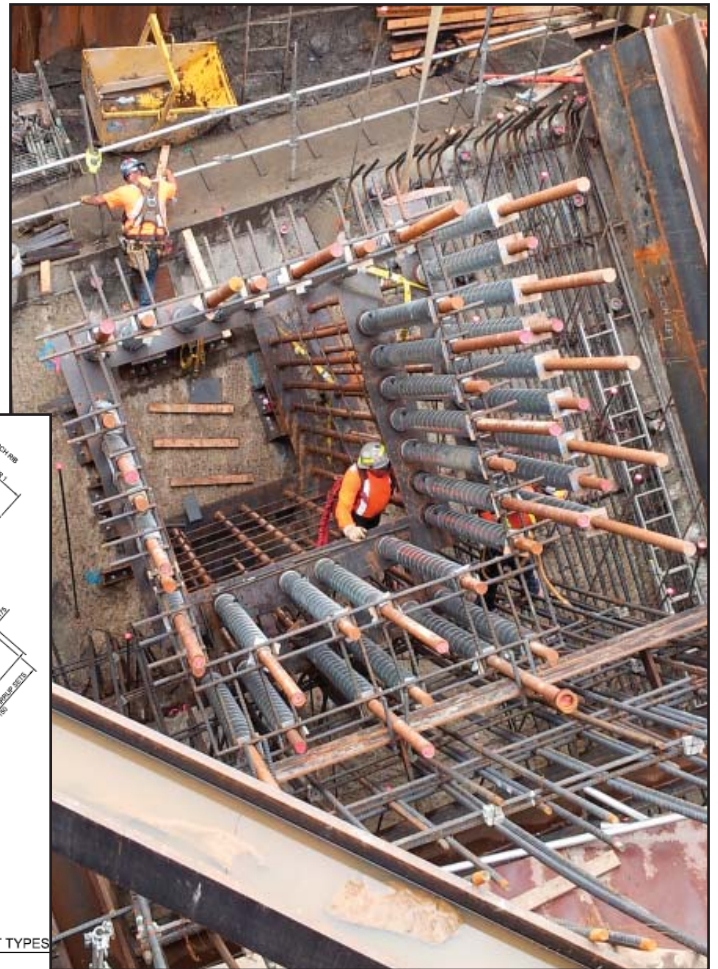
On August 11, crews began extending the in-river berms, which will serve as launching areas for the bridge arches.

Work on thrust blocks also continues on both sides of the river, with crews layering concrete over anchor rods to form the four thrust blocks that will support the new bridge arches. The scale of this work is impressive, yet because it is all taking place underground, once the bridge is completed, the thrust blocks will never be seen.

Three stories deep within the cofferdams, crew members must wear harnesses to keep them from

falling. The concrete slope is set at a 45 degree angle, out of which anchor rods extend at a right angle.

When finished, the thrust blocks will measure 10 m across and be located 20 m below the road elevation. Such a large amount of concrete requires a gradual process of pouring concrete in layers. In order to keep the concrete from overheating and not curing properly, the poured layers are covered in tarps and have a water cooling system.



Drawing of thrust block and arch support leg.

Crew members work on the thrust block. They are harnessed in to protect them from falling.

WALTERDALE BRIDGE REPLACEMENT



Crew member working on anchor rods.

HISTORICAL RESOURCES

The Interpretive Belvedere information panels that once stood within the Traditional Burial Grounds/ Fort Edmonton Cemetery have moved to their new temporary home just northeast of the cemetery.

The installation of the support structures was completed in mid-august, and the information panels were installed on August 19.



Interpretive Belvedere in its temporary new home.

CONSTRUCTION TIMELINE

2013-14	<p>Completed</p> <ul style="list-style-type: none"> Majority of tree clearing. Access roads and in-river berms. Park trails rerouted. Interpretive belvedere removed. Utilities relocated and drainage system updated. Realignment of Queen Elizabeth Park Road. Installation of pilings and construction of cofferdams needed for thrust blocks. Realignment of Walterdale Hill Road. Construct new access roads for Kinsmen Sports Centre. Move interpretive belvedere panels to temporary location. Construct new south side trails.
2014	<p>Ongoing/Upcoming</p> <ul style="list-style-type: none"> Construct thrust blocks. Construct and erect bridge arches.
2015	<ul style="list-style-type: none"> Construct bridge deck. Connect roads to new bridge alignment. New bridge open to traffic.
2016	<ul style="list-style-type: none"> Landscaping/trail connections. Demolition of old bridge.