

Thank you for choosing to be here today.

You are invited to share your
feedback on design at this event.

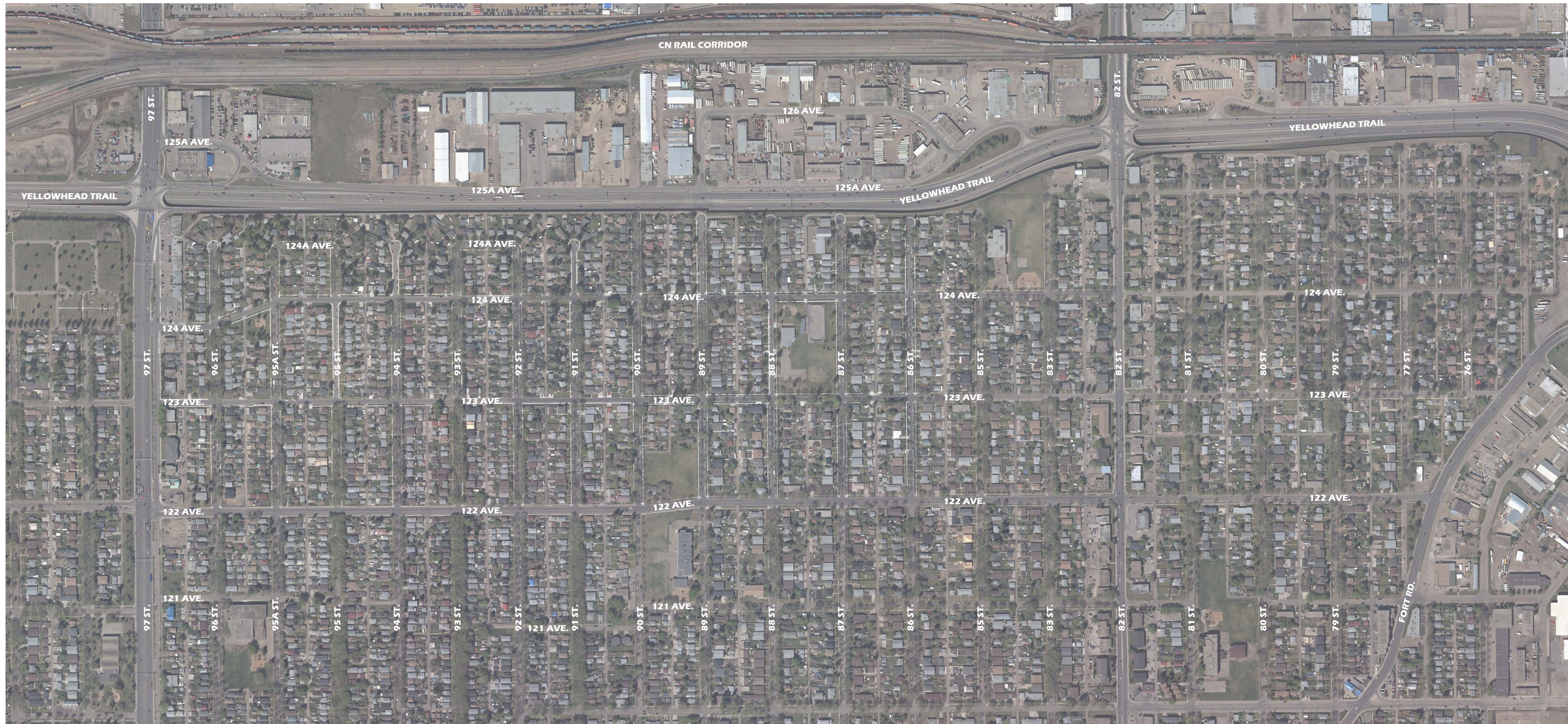
| **SHARE** YOUR VOICE
SHAPE OUR CITY

Edmonton



Pin Map

Please show us your business, property or other area of interest.

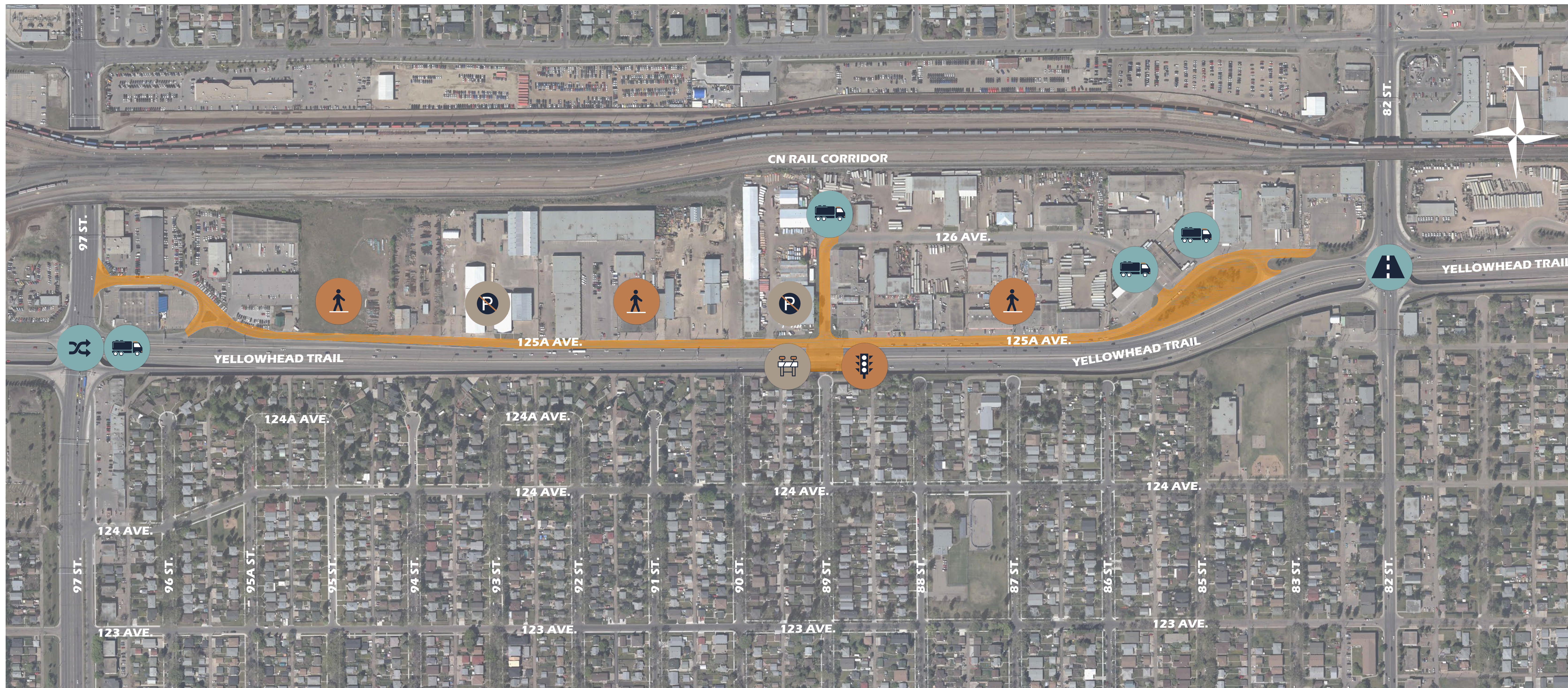






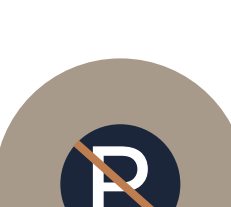

SHARE YOUR VOICE
SHAPE OUR CITY

Edmonton



Project Scope



-  89 Street traffic signals on Yellowhead Trail will be removed
-  Direct access between 89 Street and Yellowhead Trail will be closed
-  Road changes to accommodate large vehicles
-  Sidewalk will be added along 125A Avenue from 97 Street to 82 Street
-  On-street parking along 125A Avenue will be removed
-  Addition of a second west bound lane across 82 Street

Project Phases



Strategy: The City explored what technical changes are needed in the area between 97 Street and 82 Street to support the conversion of Yellowhead Trail into a freeway. The City invited area business owners to provide their feedback during the development of the strategy.

Concept Phase: The City developed two design options for the service road between 97 Street and 82 Street that supported the Yellowhead Trail Freeway Conversion and addressed the feedback on strategy from area business owners. The public was invited to help the City Refine the Concept plans.

Design Phase:

- The City adjusted the preferred design to reflect the public input provided during concept.
- The public is invited to share their feedback on the recommended design.
- The City will develop a final design to reflect the feedback gathered. The public will be invited to learn about the final design on the project webpage.

Build: Construction will begin in 2019. The final design will be applied to the area.

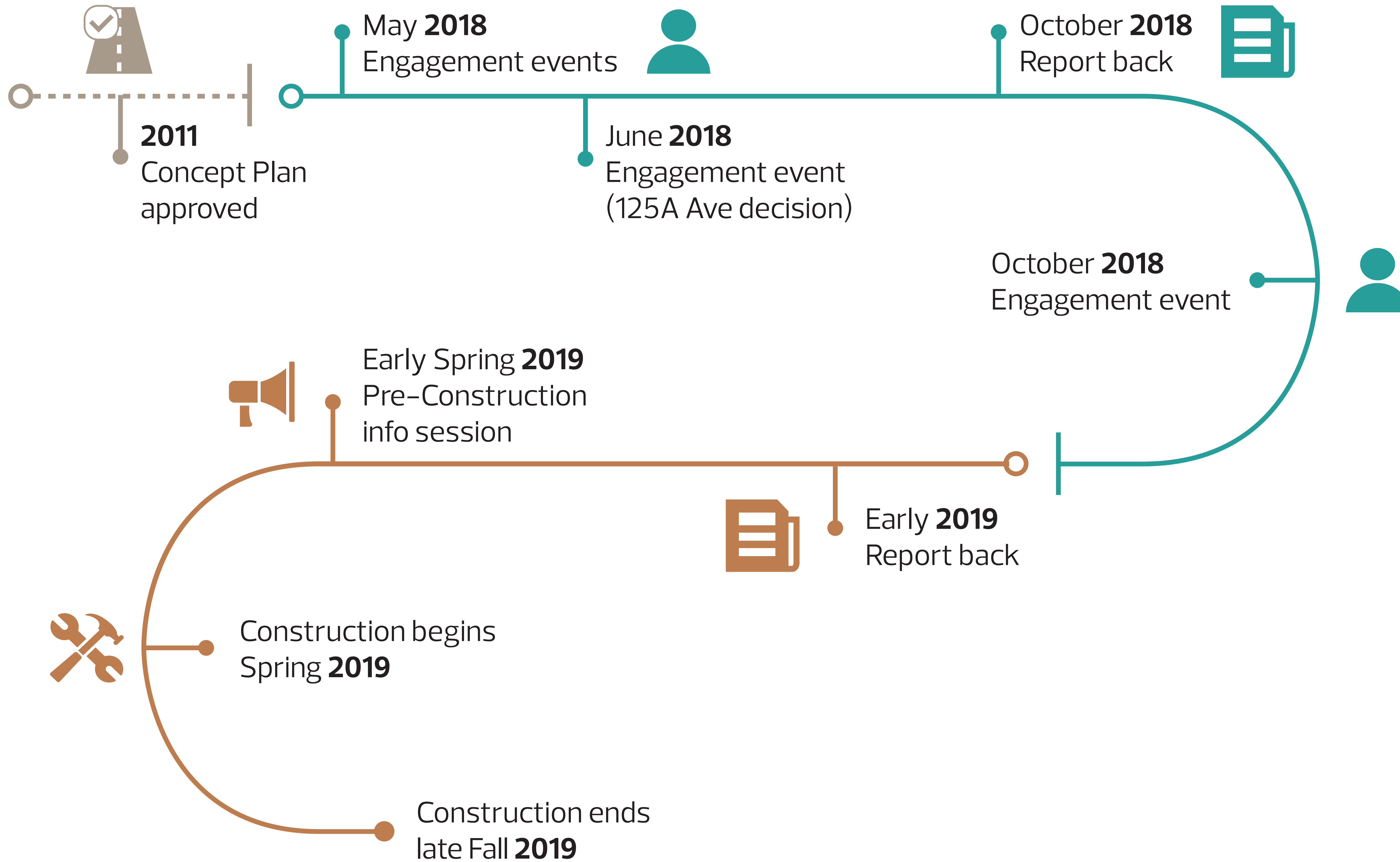
Operate: Construction will be completed. The area will be fully open for use in its new form.

SHARE YOUR VOICE
SHAPE OUR CITY

Edmonton

Project Timeline

2011
Public
Involvement
activities

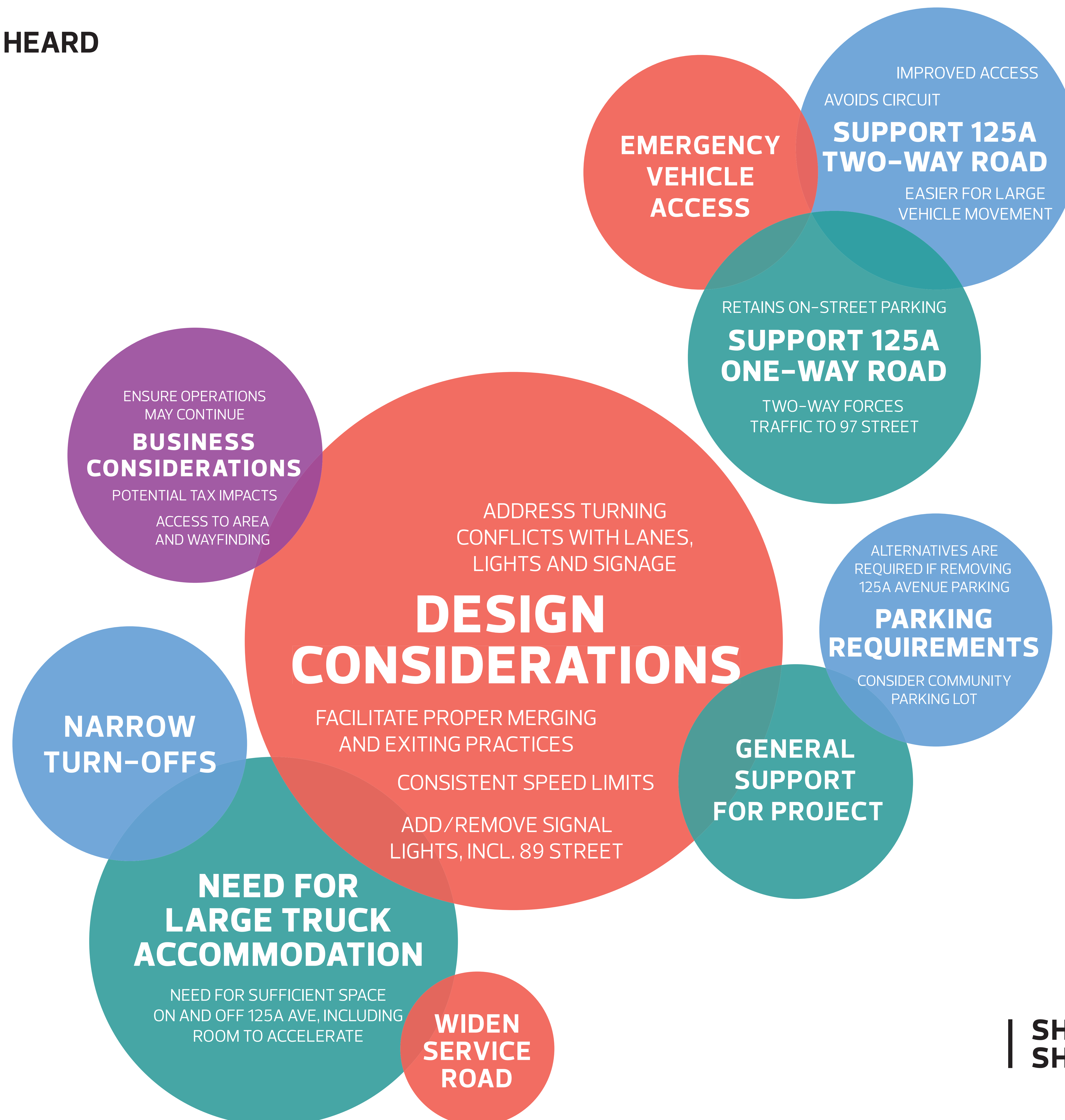


SHARE YOUR VOICE
SHAPE OUR CITY

Edmonton

2018 Public Engagement

WHAT WE HEARD



**SHARE YOUR VOICE
SHAPE OUR CITY**

Edmonton



Spring 2018 Engagement

WHO WE ENGAGED

Delton Business Area



Business Owners/Operators



Commercial Property Owners



Community Leagues

HOW WE ENGAGED



2 Workshops (May 2018)



Operations Questionnaire (May–June 2018)



June 13 Workshop



Community League Meetings (May–June 2018)

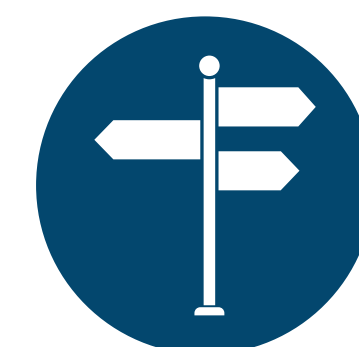
WHAT WE ASKED



Design Adjustments (REFINE)



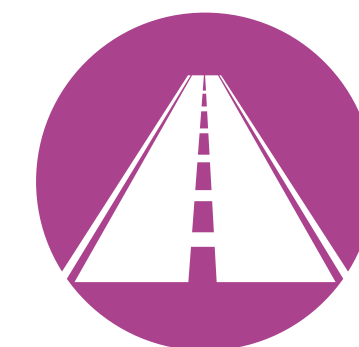
Construction Planning (ADVISE)



Signage and Wayfinding (ADVISE)



Construction Planning (ADVISE)



125A Avenue – One Way or Two Way (CREATE)



Design Adjustments (REFINE)

SHARE YOUR VOICE
SHAPE OUR CITY

Edmonton

Spring 2018 Engagement

WHAT WE DID



125A AVENUE ROADWAY DESIGN ONE-WAY WITH PARKING OR TWO-WAY WITHOUT PARKING

What We Heard

Parking for customers and employees are both important to businesses, but two-way travel is a priority.

What We Did

Proceeded with two-way road design.
Explored alternative parking options



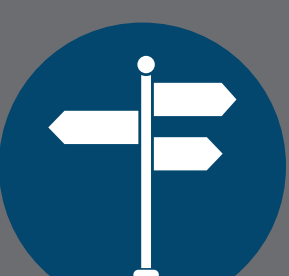
DESIGN

What We Heard

Support for sidewalk
Large Truck Access
Access to businesses

What We Did

Sidewalk is included in design.
Design supports large truck movement and turns
Alternative access to the Delton Business Area is included in the design.



SIGNAGE AND WAYFINDING

Customers knowing how to find businesses is key

Wayfinding for the full length of Yellowhead Trail will be completed and implemented as part of the overall conversion program.



Construction decisions have yet to be made and will be reported in early 2019.

SHARE YOUR VOICE
SHAPE OUR CITY

Edmonton



Engagement Spectrum and Decisions

The public is consulted by the City to share feedback and perspectives that are considered for policies, programs, projects, or services.

ADVISE

The public is involved by the City to adapt and adjust approaches to policies, programs, projects, or services.

REFINE

The public collaborates with the City to develop and build solutions regarding policies, programs, projects, or services. This can include community initiated engagement.

CREATE

The public is empowered to make decisions directly or on behalf of the City about policies, programs, projects, or services.

DECIDE

- + Design Feedback
- + Communication during construction

SHARE YOUR VOICE
SHAPE OUR CITY

Edmonton



**What are your thoughts
of the changes made in
these plans?**

ADVISE

SHARE YOUR VOICE
SHAPE OUR CITY

Edmonton

How does this design support or impact your movement in the area as a pedestrian, cyclist or motorist?

ADVISE

SHARE YOUR VOICE
SHAPE OUR CITY

Edmonton

Communications During Construction

Please share your views on what information is important for you to receive about construction.

Your feedback will inform the planning of our **Pre-Construction Information Session in Spring 2019.**

SHARE YOUR VOICE
SHAPE OUR CITY

Edmonton



Thank you for coming

Please take the time to tell us about
your experience today.

Thank you for sharing your thoughts with us.

SHARE YOUR VOICE
SHAPE OUR CITY

Edmonton

