



Southeast LRT Workshop Session

www.edmonton.ca/LRTProjects

Welcome

96 Street / 102 Avenue to Strathearn

May 18, 2010



Tonight's Meeting Purpose

www.edmonton.ca/LRTProjects

- To provide more detailed information on Southeast LRT concept engineering
- To provide specific detail on alignment alternatives for 96 Street / 102 Avenue to 85 Street / 93 Avenue segment
- To collect comments from participants

LRT Workshop Session Schedule

www.edmonton.ca/LRTProjects

West LRT	
May 4, 2010	Lewis Estates to Meadowlark
May 6, 2010	Meadowlark to SPR/142 St.
May 12, 2010	SPR/149 St. to SPR/124 St.
May 13, 2010	Groat Road to Downtown

Southeast LRT	
May 18, 2010	Downtown to Strathearn
May 19, 2010	Strathearn to Whyte Ave
May 26, 2010	Bonnie Doon to Wagner
May 27, 2010	Wagner to Mill Woods

www.edmonton.ca/LRTProjects



Proposed Agenda

www.edmonton.ca/LRTProjects

- Welcome and Introductions
- Project Background
- Session #1: Right-of-way Alignment
- Session #2: Station Location and Configuration
- Session #3: Neighbourhood and Business Access
- Conclusion



Southeast LRT

96 Street / 102 Avenue to Strathearn

www.edmonton.ca/LRTProjects

Project Background



Where we are in the process?

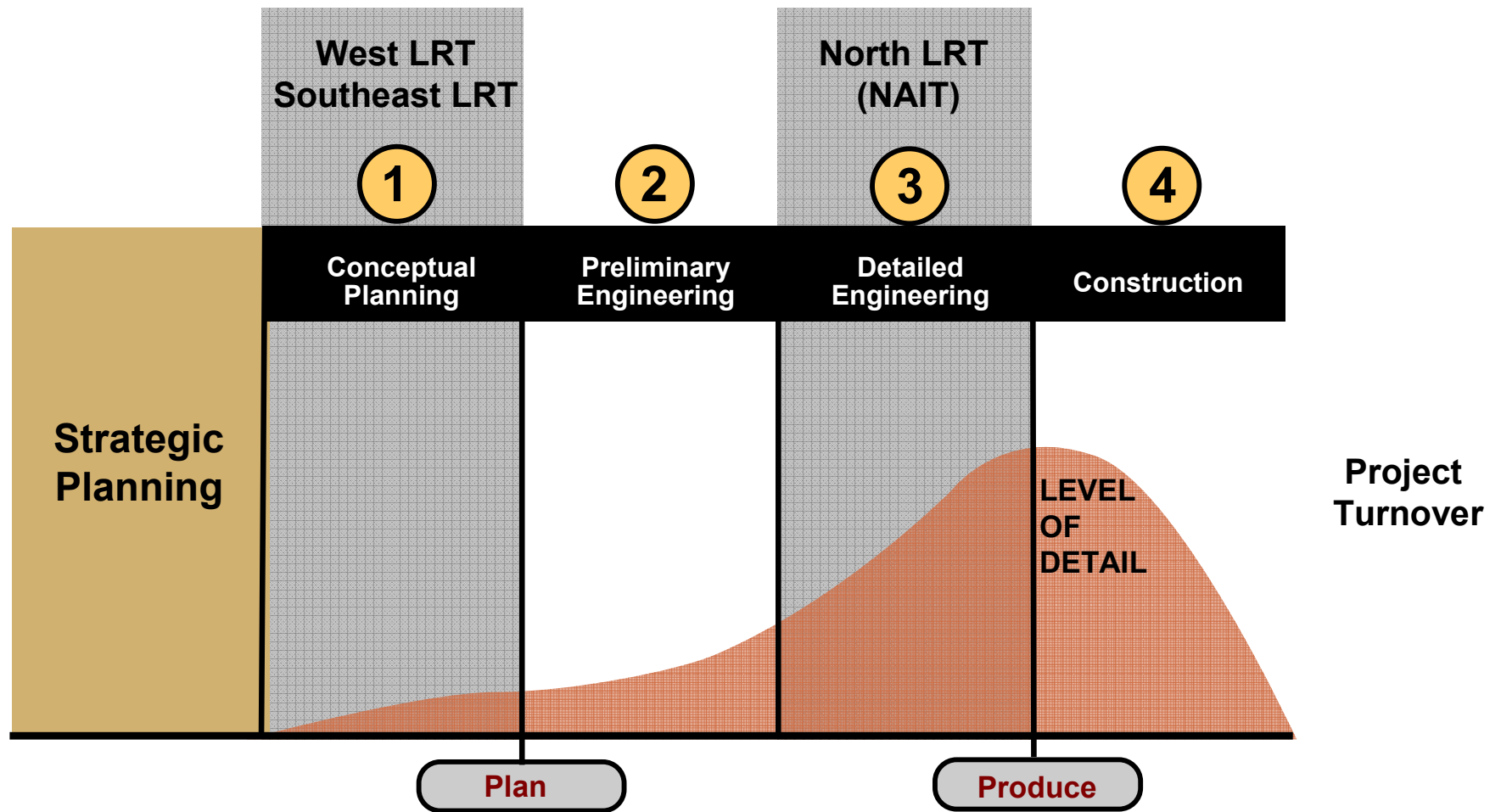
www.edmonton.ca/LRTProjects

Council approvals to date:

- LRT Network Plan (*June 2009*)
- Southeast LRT Corridor (*December 2009*)
- West LRT Corridor (*December 2009*)

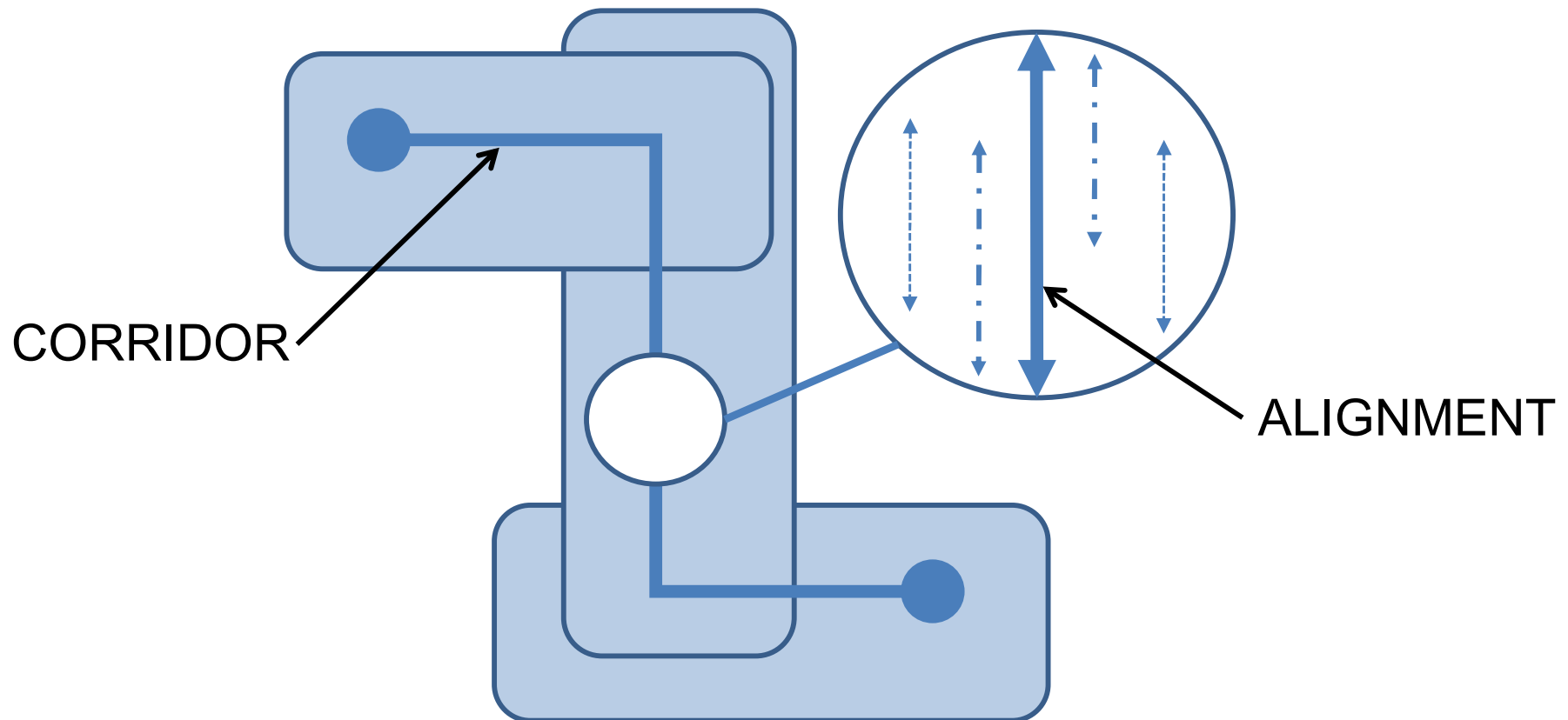
Where we are in the process?

www.edmonton.ca/LRTProjects



Corridor vs. Alignment

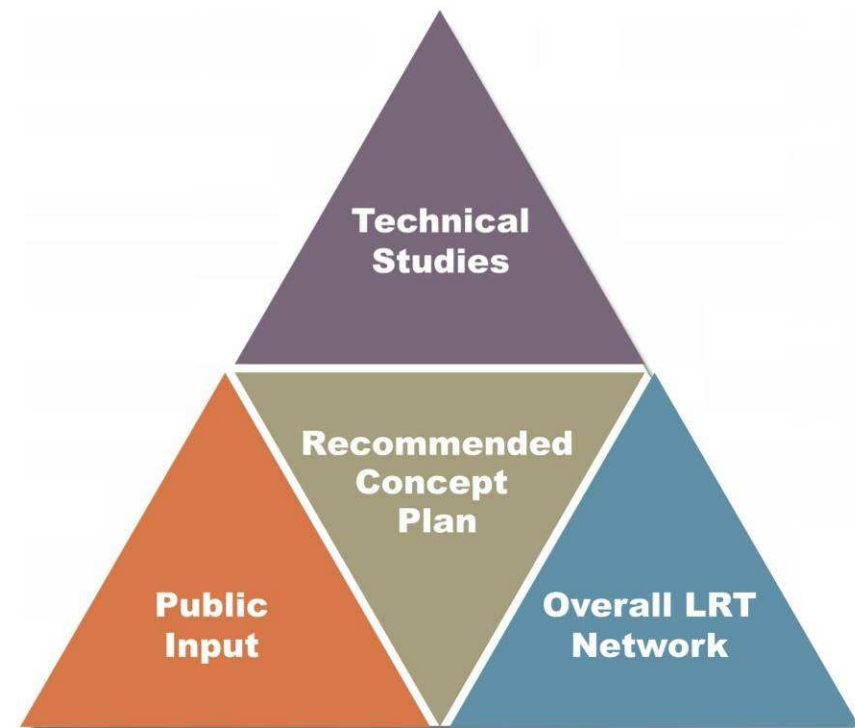
www.edmonton.ca/LRTProjects



Where we are in the process today?

www.edmonton.ca/LRTPProjects

- Presenting information (givens):
 - Grade Separations
 - Noise Study
 - Roadway Network
 - Safety
- Collecting participant comment/input (testing ideas):
 - Right-of-Way Alignment
 - Station Location
 - Neighbourhood and Business Access



Where are we going?

www.edmonton.ca/LRTProjects

Alignment Selection

Alignment Definition

Reporting

MAY

SEP

NOV

DEC

Workshops



Open Houses



Information Sessions



Public Hearing



*On going Consultation
with Key Stakeholders*



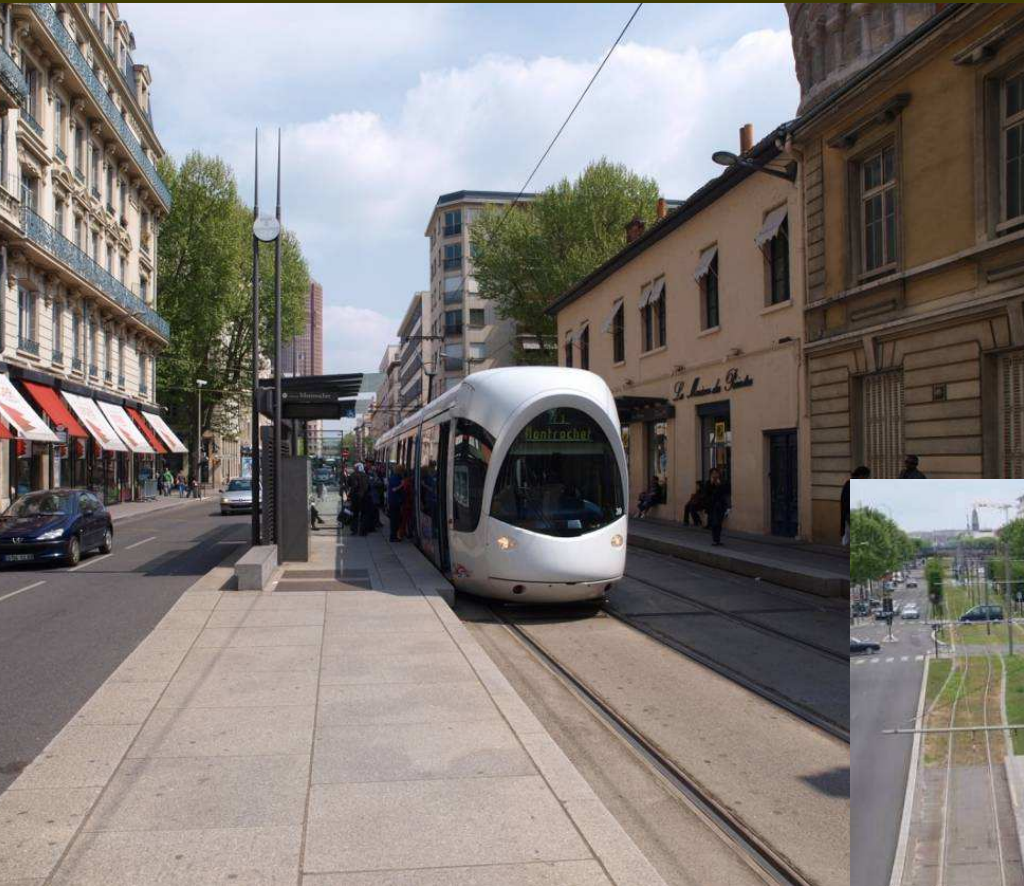
LRT Network

www.edmonton.ca/LRTProjects



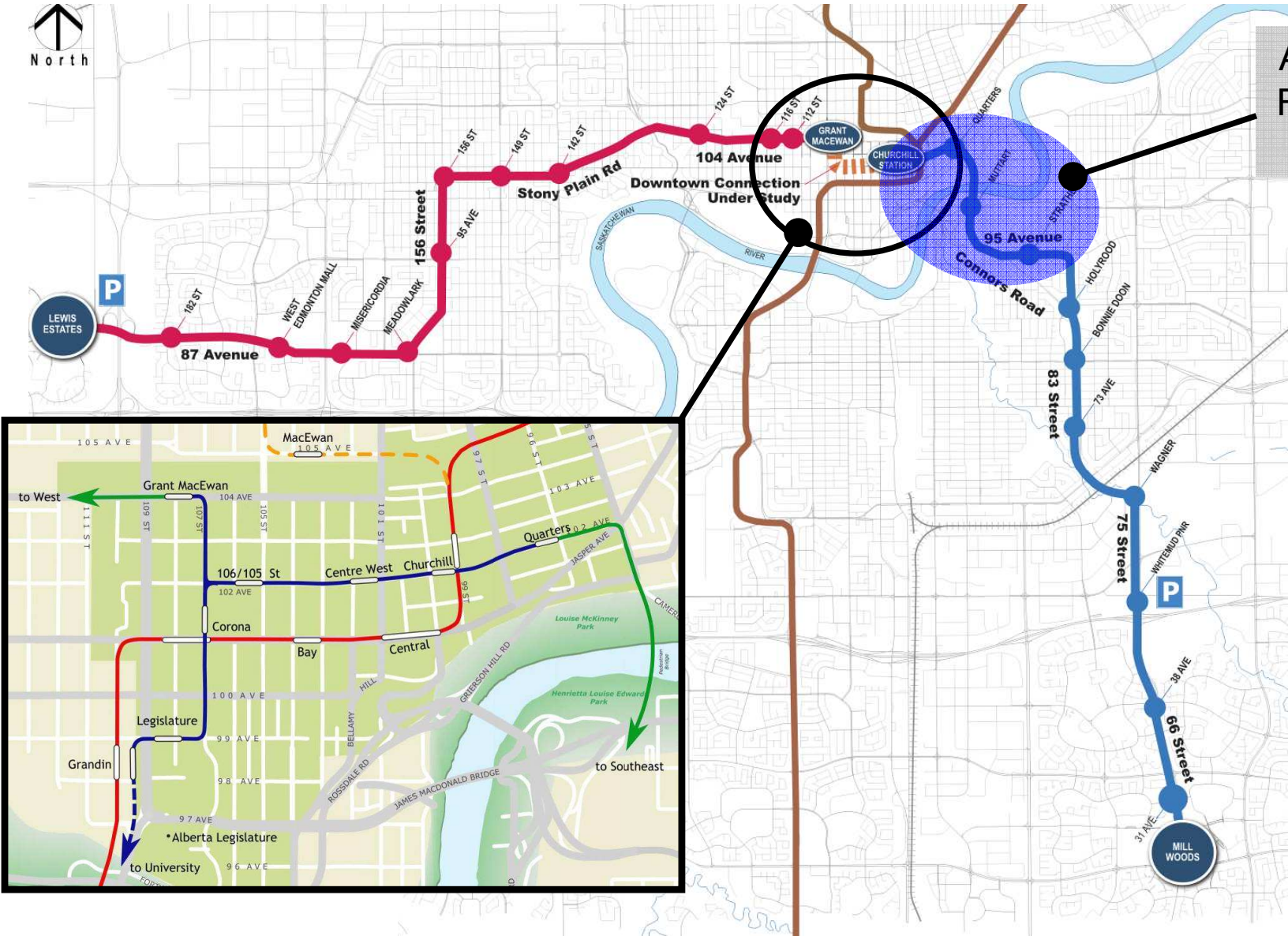
Urban Style LRT

www.edmonton.ca/LRTProjects



Southeast and West LRT Corridors

www.edmonton.ca/LRTProjects

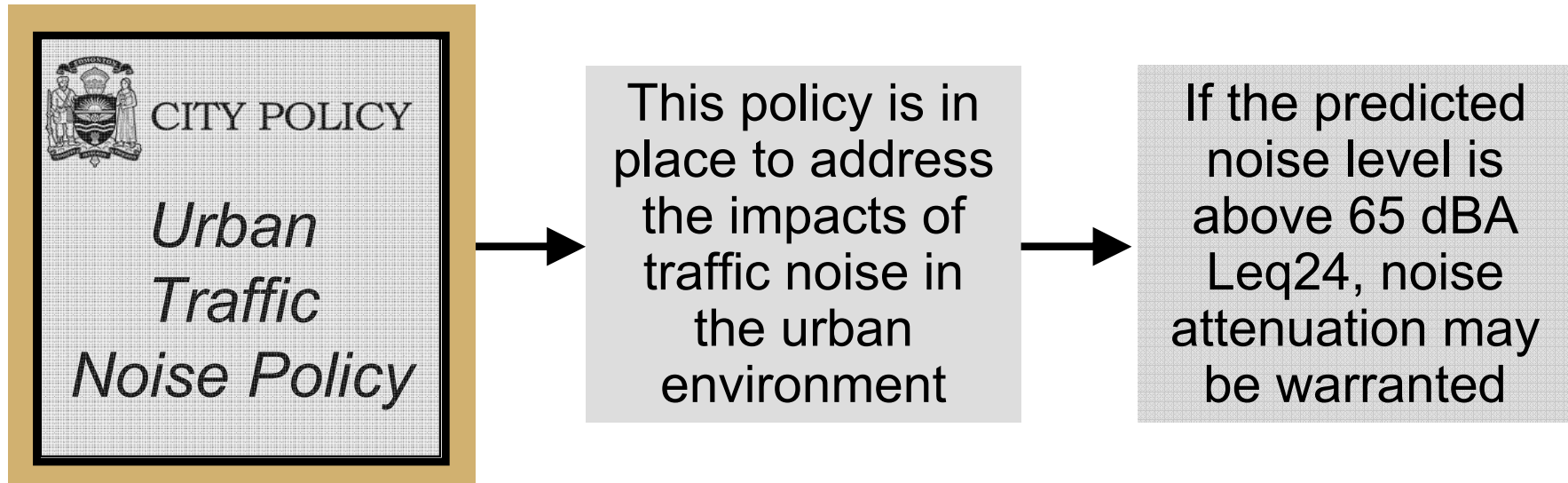


AREA WE ARE FOCUSING ON TONIGHT

LRT Noise Impact

www.edmonton.ca/LRTProjects

- LRT Noise Impact Study under way



Roadway Network

www.edmonton.ca/LRTPProjects

- Tunnel under Jasper Avenue
- Bridge over 98 Avenue
- Reviewing key intersections



Jasper Avenue / 95 Street



98 Avenue



Connors Road / 95 Avenue



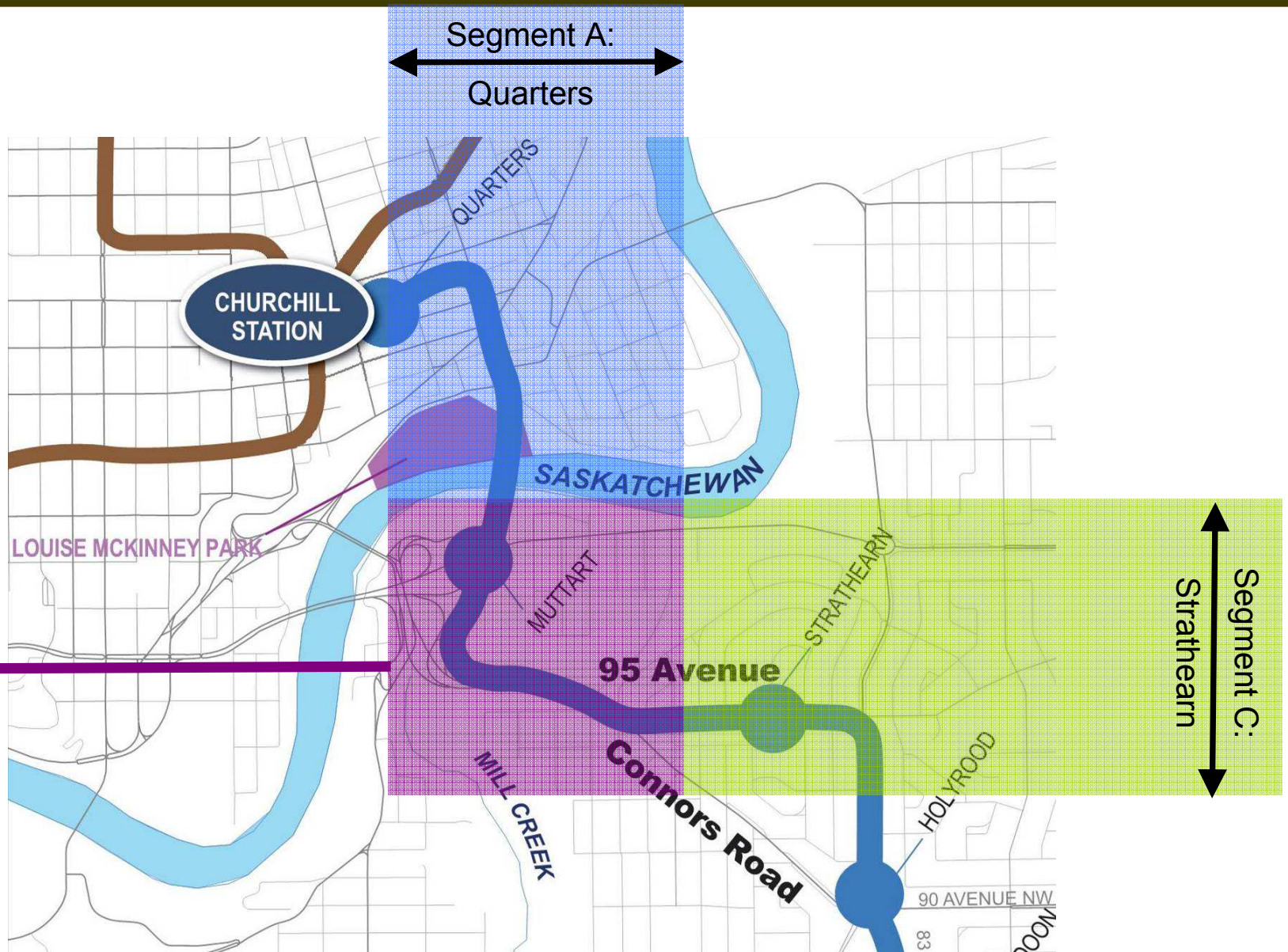
Workshop Session Overview

www.edmonton.ca/LRTProjects

- Session #1:
 - Right-of-way Alignment
- Session #2:
 - Station Location
- Session #3:
 - Neighbourhood and Business Access

Neighbourhood Groupings

www.edmonton.ca/LRTPProjects





Southeast LRT

96 Street / 102 Avenue to Strathearn

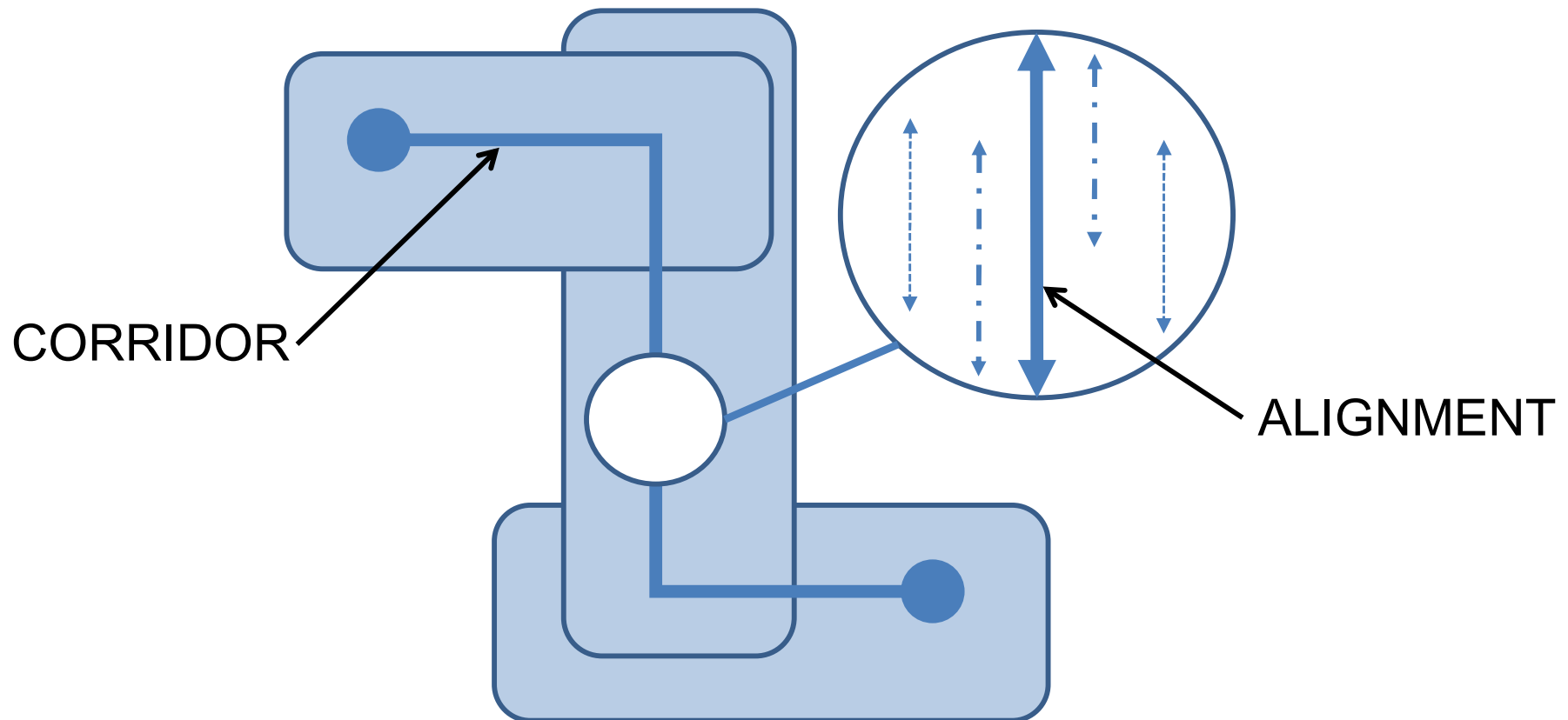
www.edmonton.ca/LRTProjects

Session #1

Right-of-Way (ROW) Alignment Alternatives

Corridor vs. Alignment

www.edmonton.ca/LRTProjects



Right-of-Way

www.edmonton.ca/LRTPProjects

- There are impacts
- Constrained Right-of-Way
- Minimize property requirements by removing:
 - service roads
 - traffic lanes
 - on-street parking





ROW Alignment Options

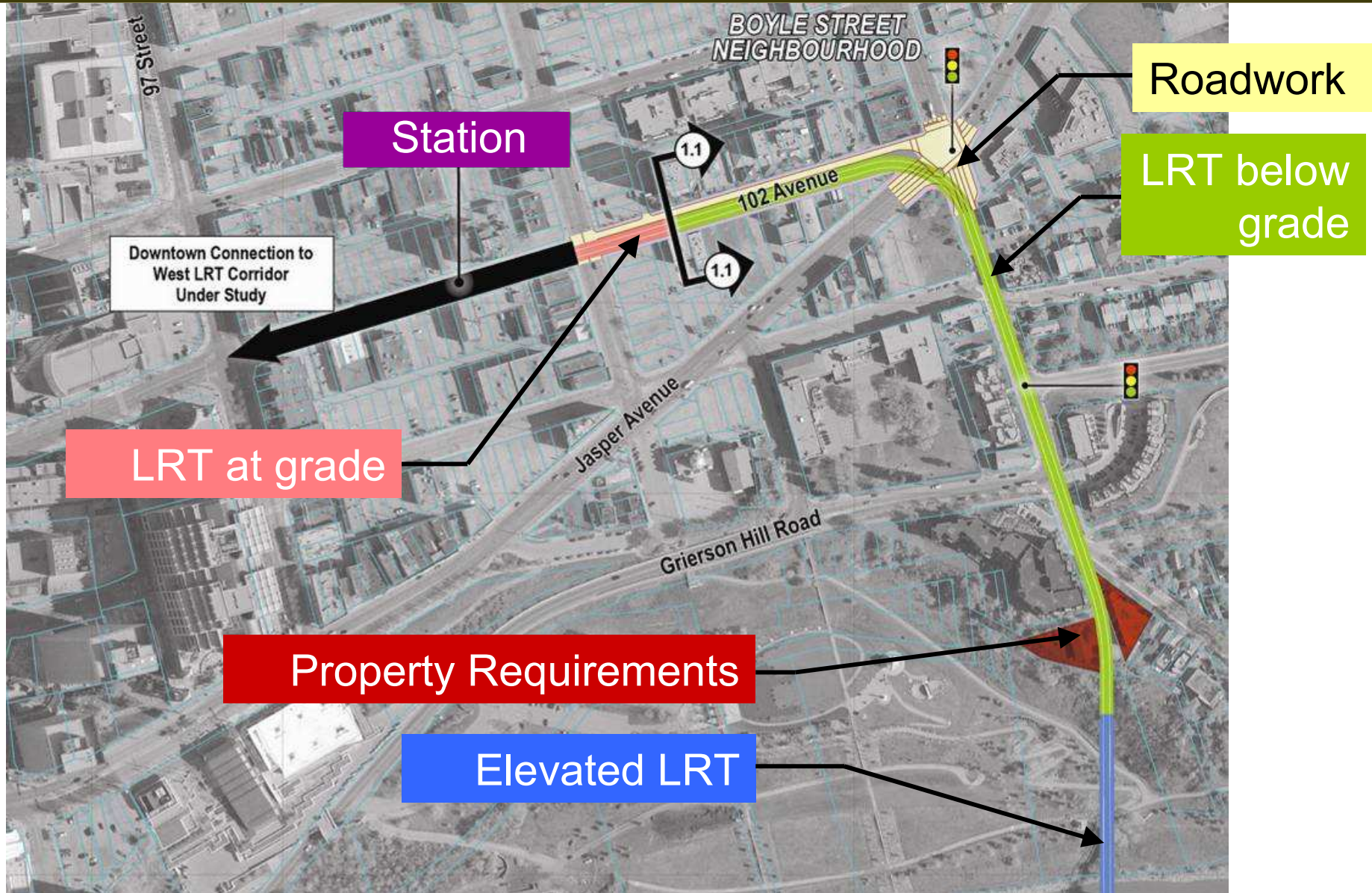
www.edmonton.ca/LRTProjects

Comment on your chosen section

- *What needs to be considered for each alignment?*

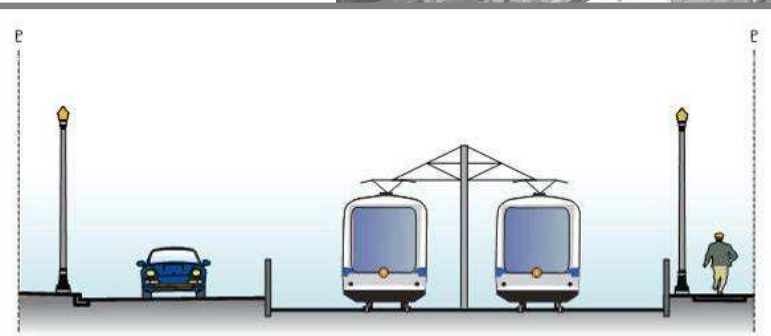
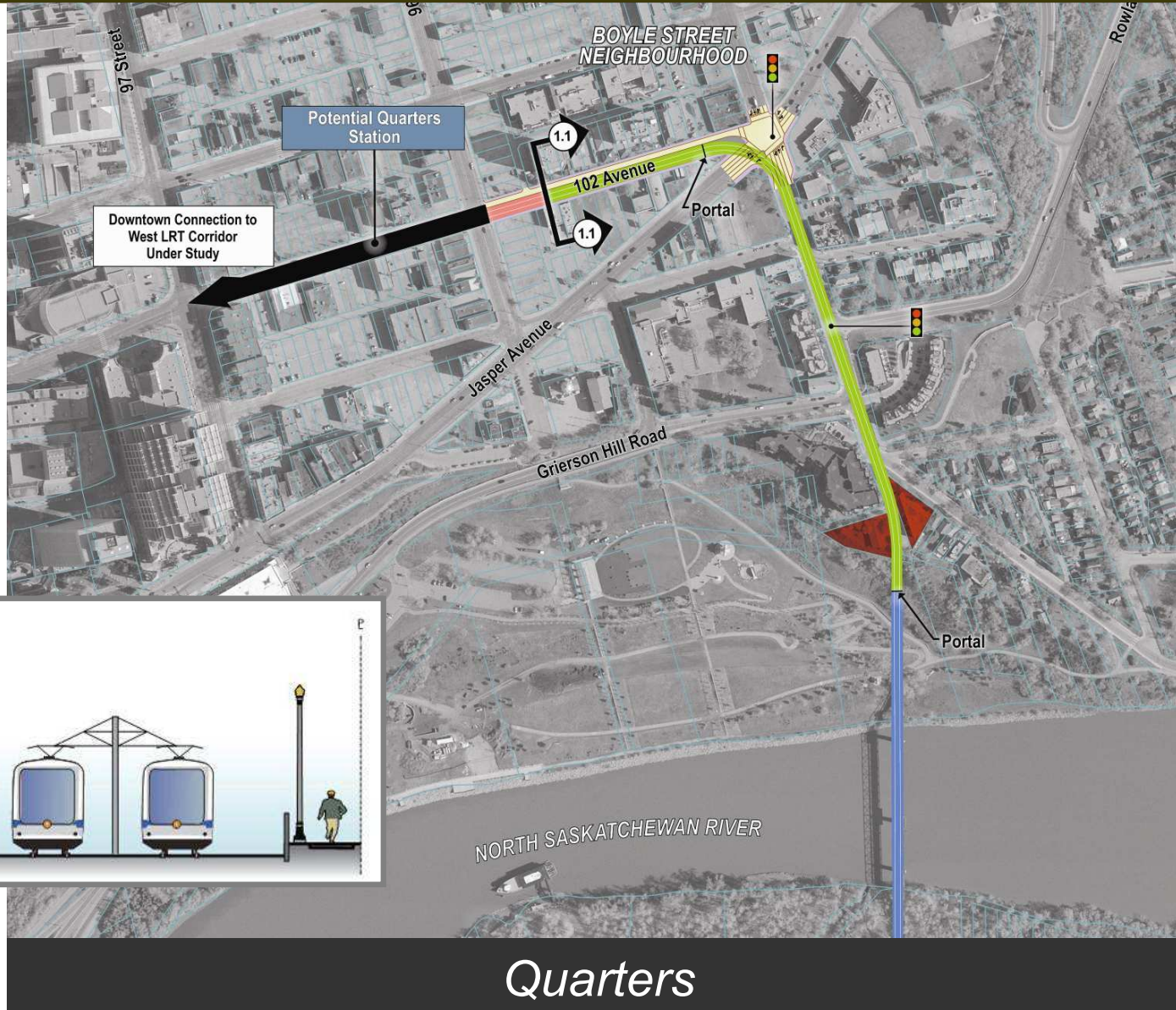
Legend / Key

www.edmonton.ca/LRTProjects



ROW Alignment - Segment A

www.edmonton.ca/LRTProjects



Quarters

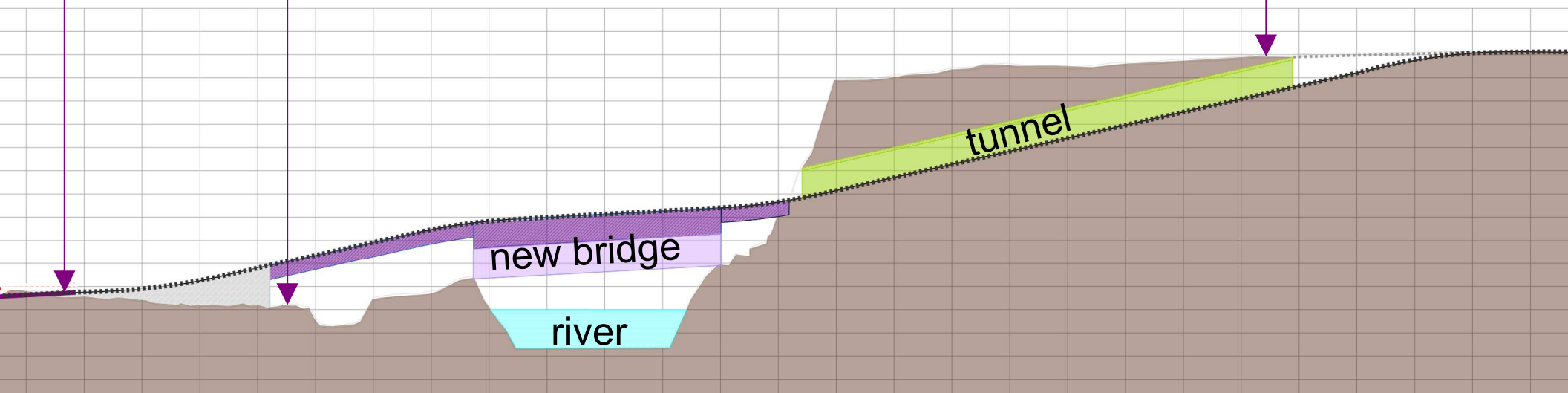
ROW Alignment - Segment A

www.edmonton.ca/LRTProjects

at grade on service road
west of Muttart
Conservatory

98 Avenue
(under bridge)

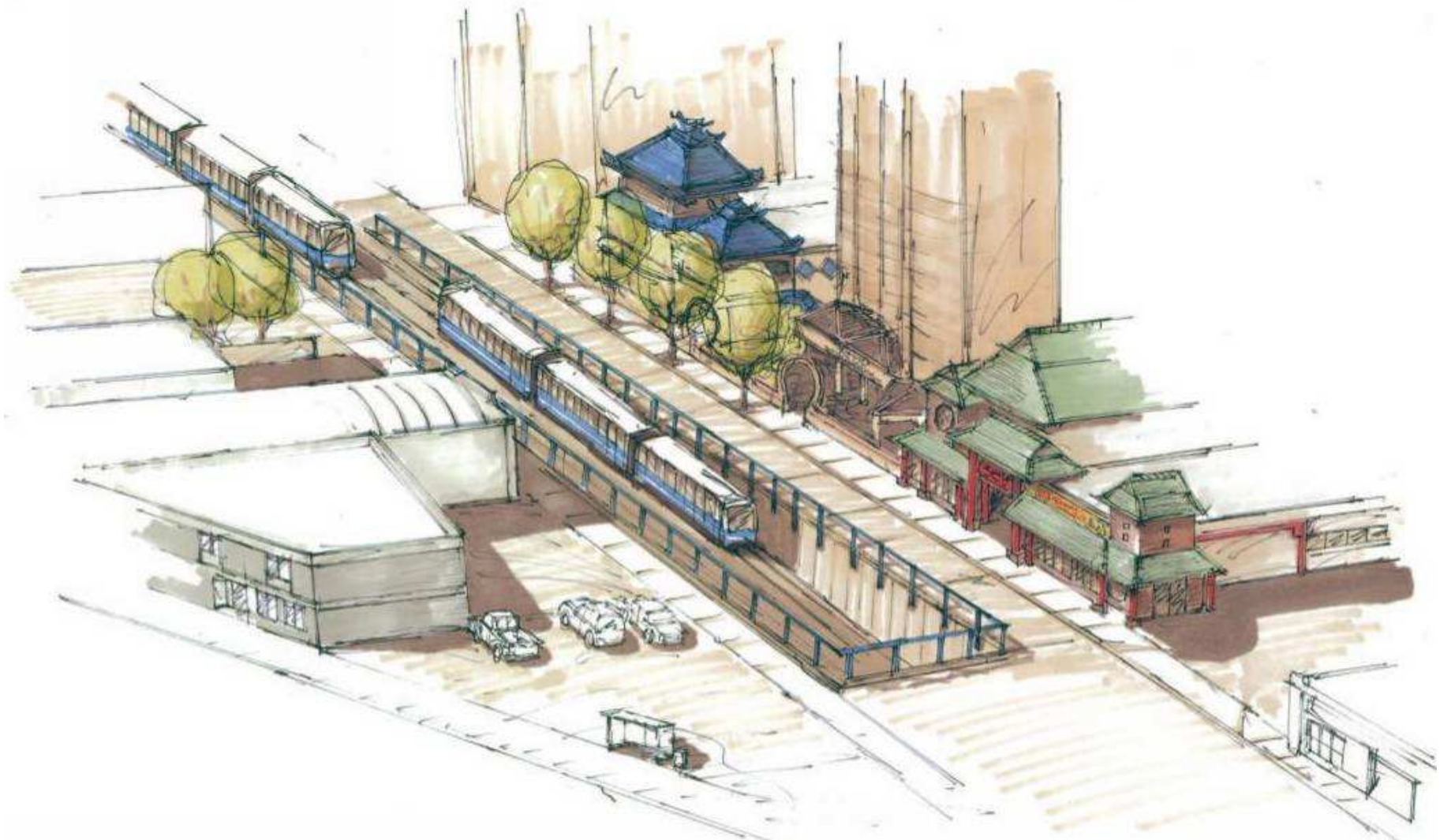
Jasper Avenue
(over tunnel)



PROFILE

ROW Alignment - Segment A

www.edmonton.ca/LRTProjects



Quarters - Tunnel Portal on 102 Avenue

ROW Alignment - Segment A

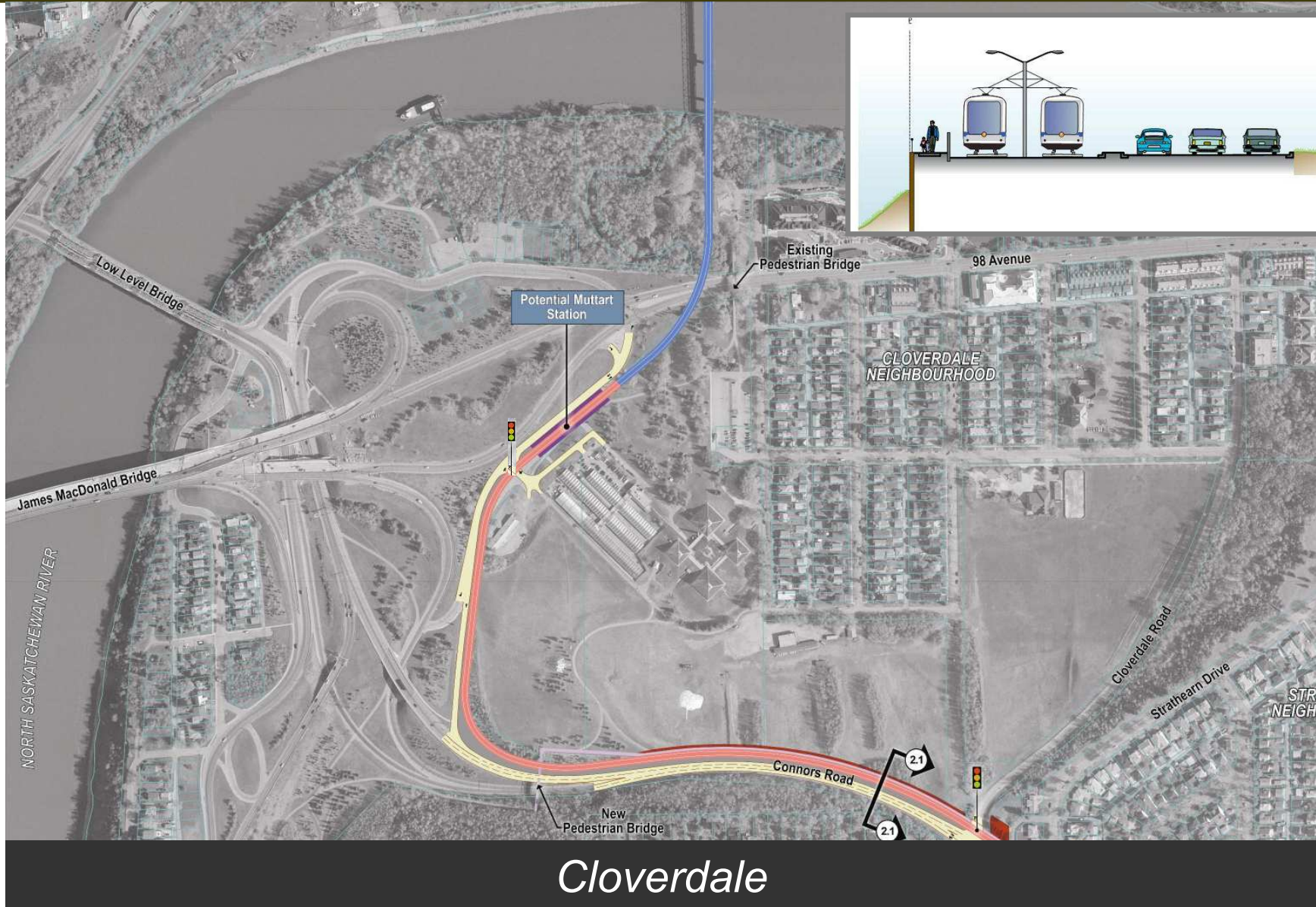
www.edmonton.ca/LRTProjects



New River Crossing

ROW Alignment - Segment B

www.edmonton.ca/LRTPProjects



ROW Alignment - Segment B

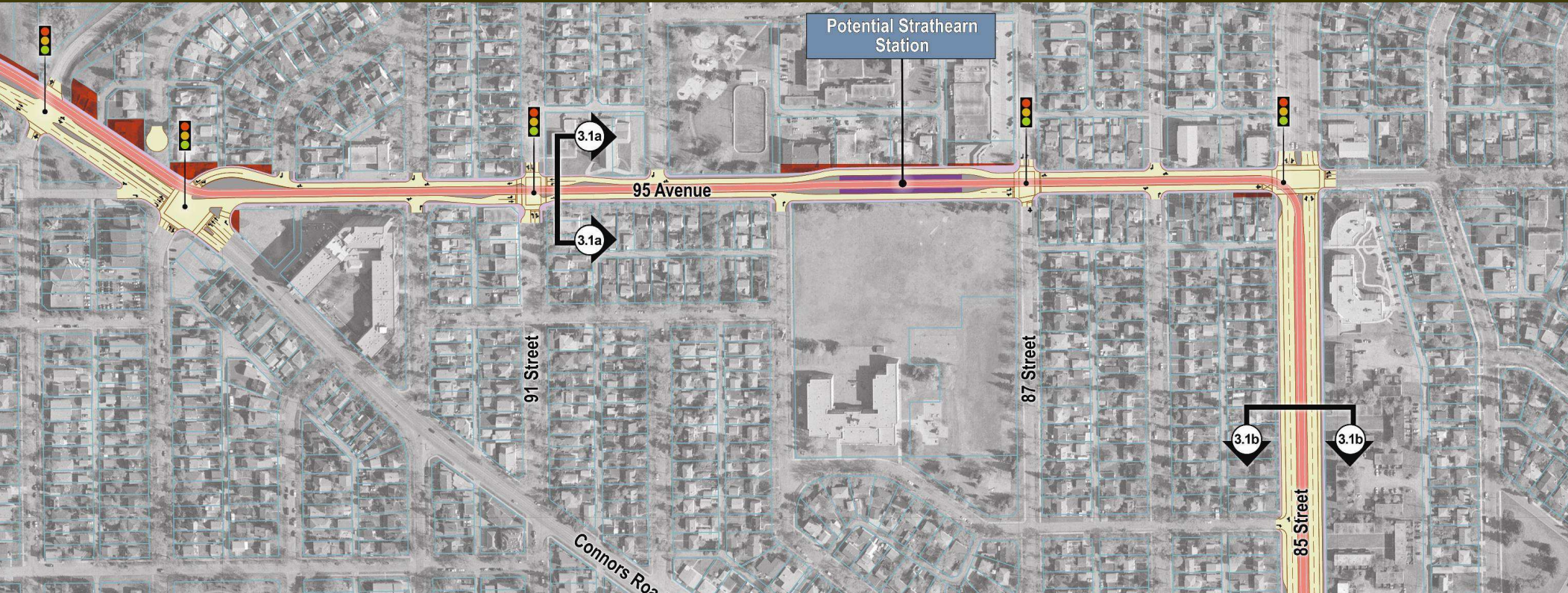
www.edmonton.ca/LRTProjects



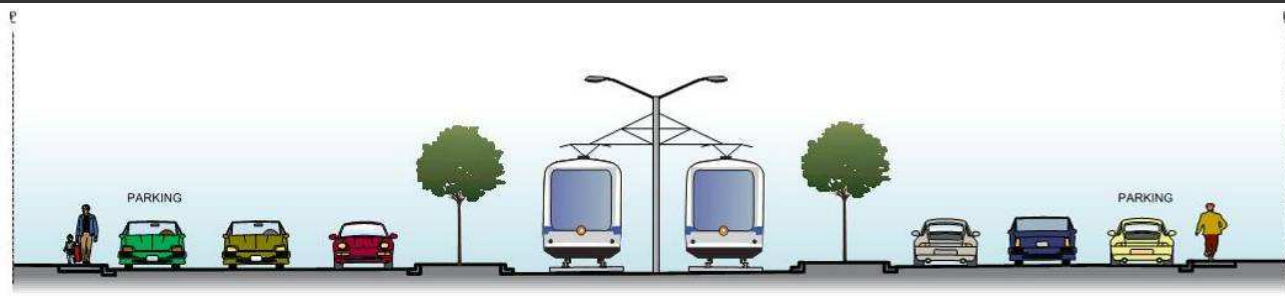
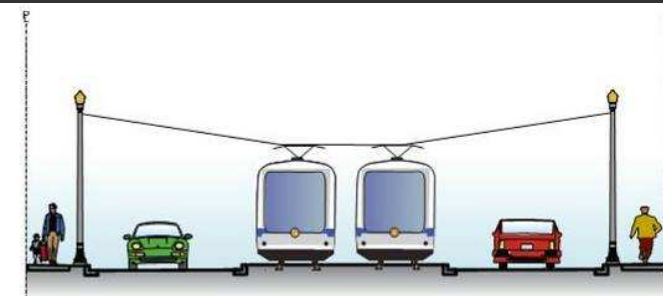
Top of Connors Road

ROW Alignment - Segment C

www.edmonton.ca/LRTProjects

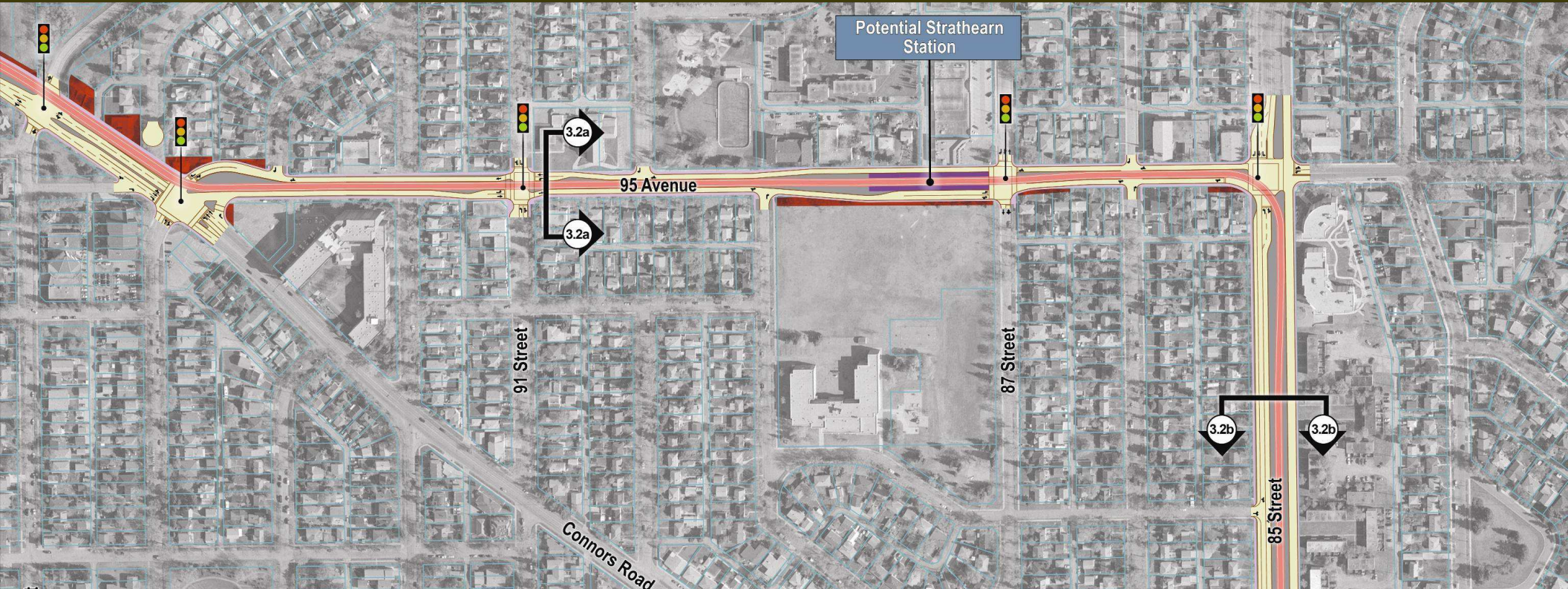


ALTERNATIVE 1 - Centre Running LRT

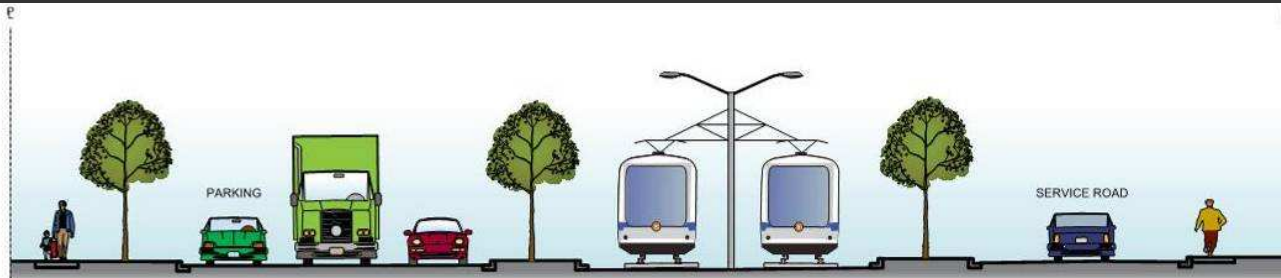
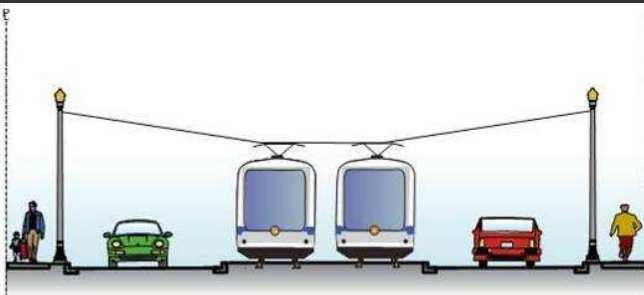


ROW Alignment - Segment C

www.edmonton.ca/LRTProjects



ALTERNATIVE 2 - Side Running LRT along 85 Street





ROW Alignment – Workshop Question

www.edmonton.ca/LRTProjects

Comment on your chosen section

Given that the corridor has been defined and that we are only talking about the ROW alignment alternatives,

– What needs to be considered for each alignment?



Southeast LRT

96 Street / 102 Avenue to Strathearn

www.edmonton.ca/LRTProjects

Session #2

Station Location and Configuration



Station Location and Configuration Options

www.edmonton.ca/LRTProjects

Comment on your chosen section

– *How does this station fit into your neighbourhood?*

*How does it affect your travel patterns?
(pedestrian, cyclist, or driver)*

Simple Stop Design

www.edmonton.ca/LRTProjects

Low floor vehicles and platforms provide:

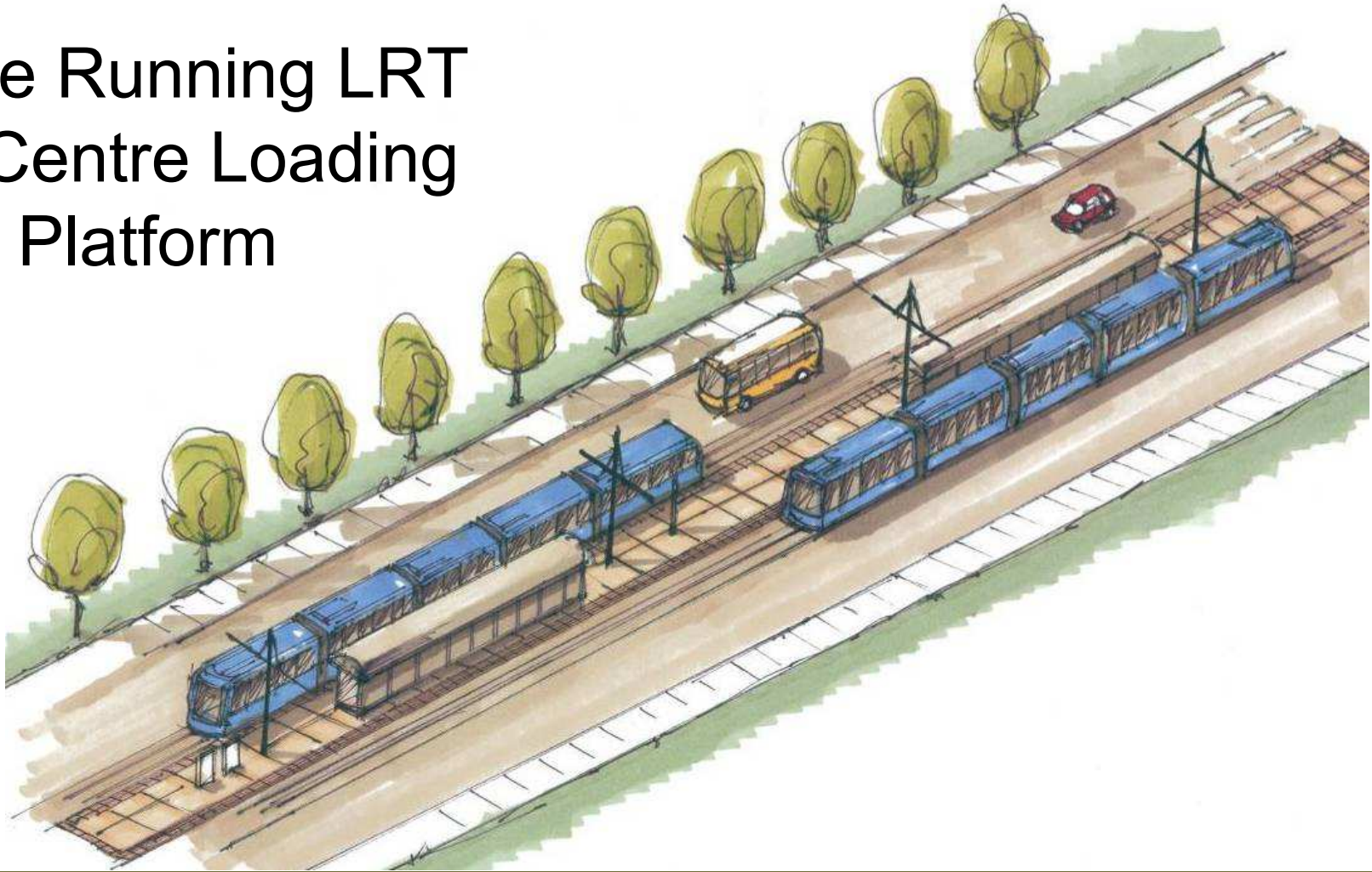
- Simple Infrastructure
- Fits into surrounding areas
- Improved neighbourhood connections



Station Configuration

www.edmonton.ca/LRTProjects

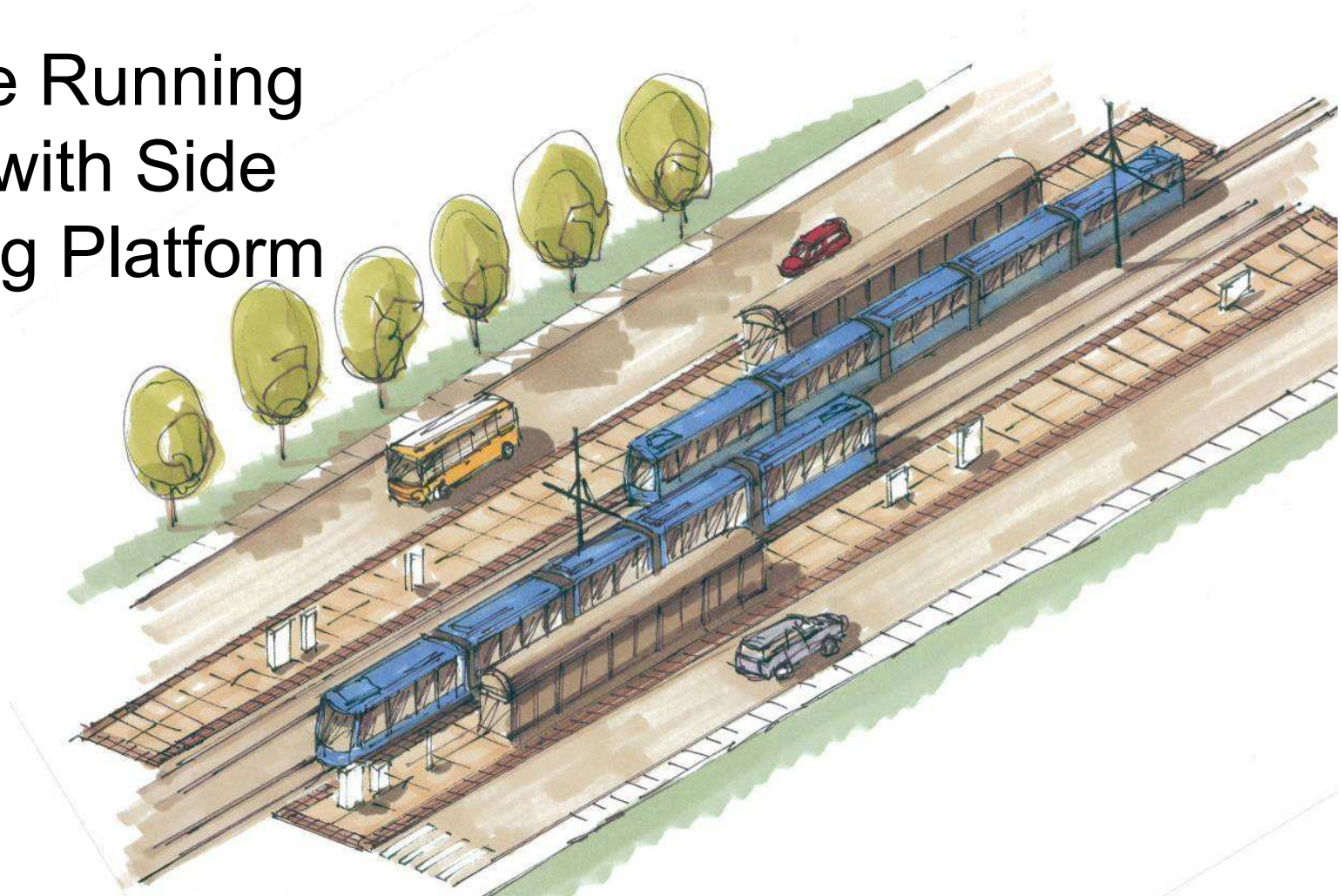
Centre Running LRT with Centre Loading Platform



Station Configuration

www.edmonton.ca/LRTProjects

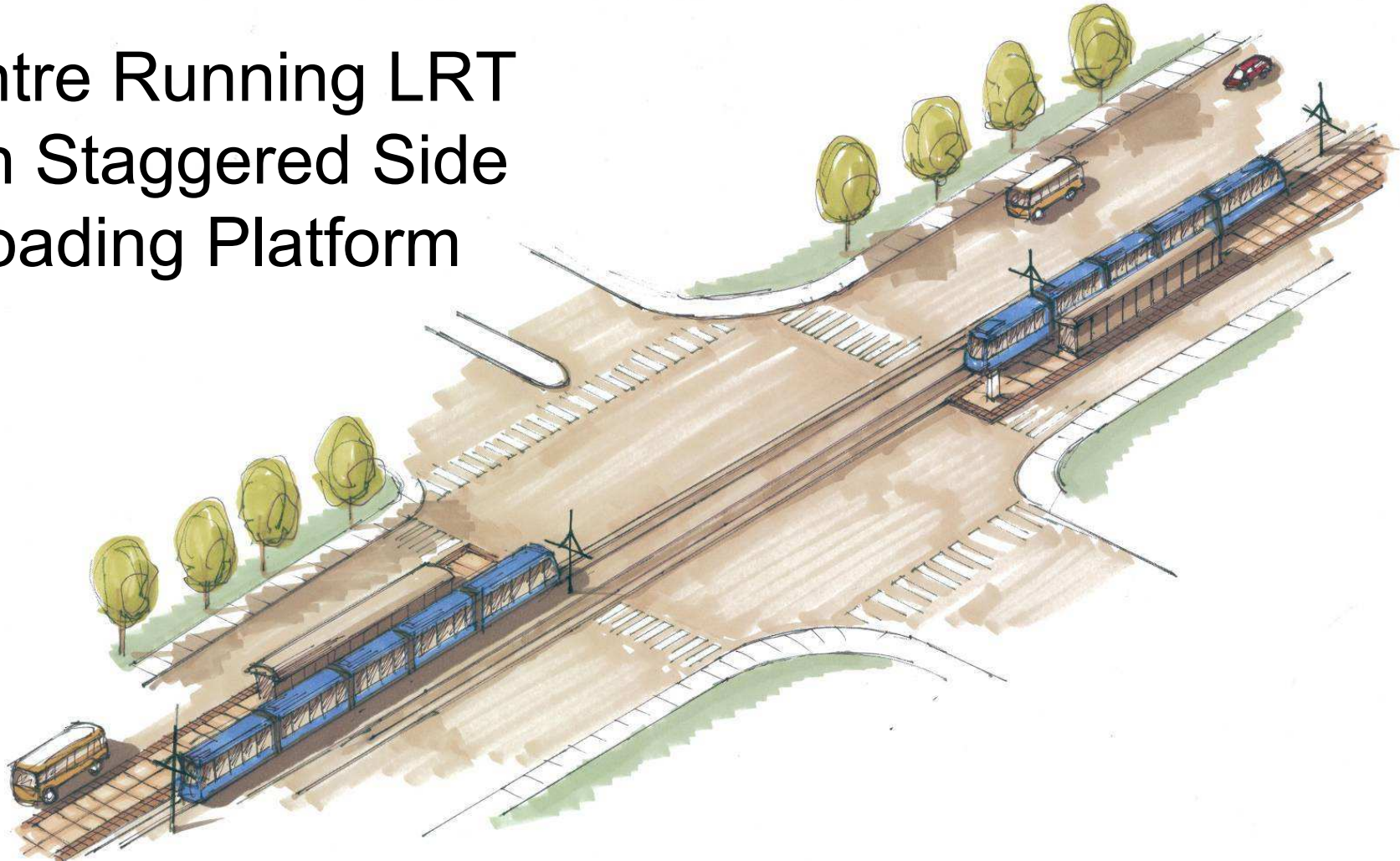
Centre Running
LRT with Side
Loading Platform



Station Configuration

www.edmonton.ca/LRTProjects

Centre Running LRT
with Staggered Side
Loading Platform



Overview Station Alternatives

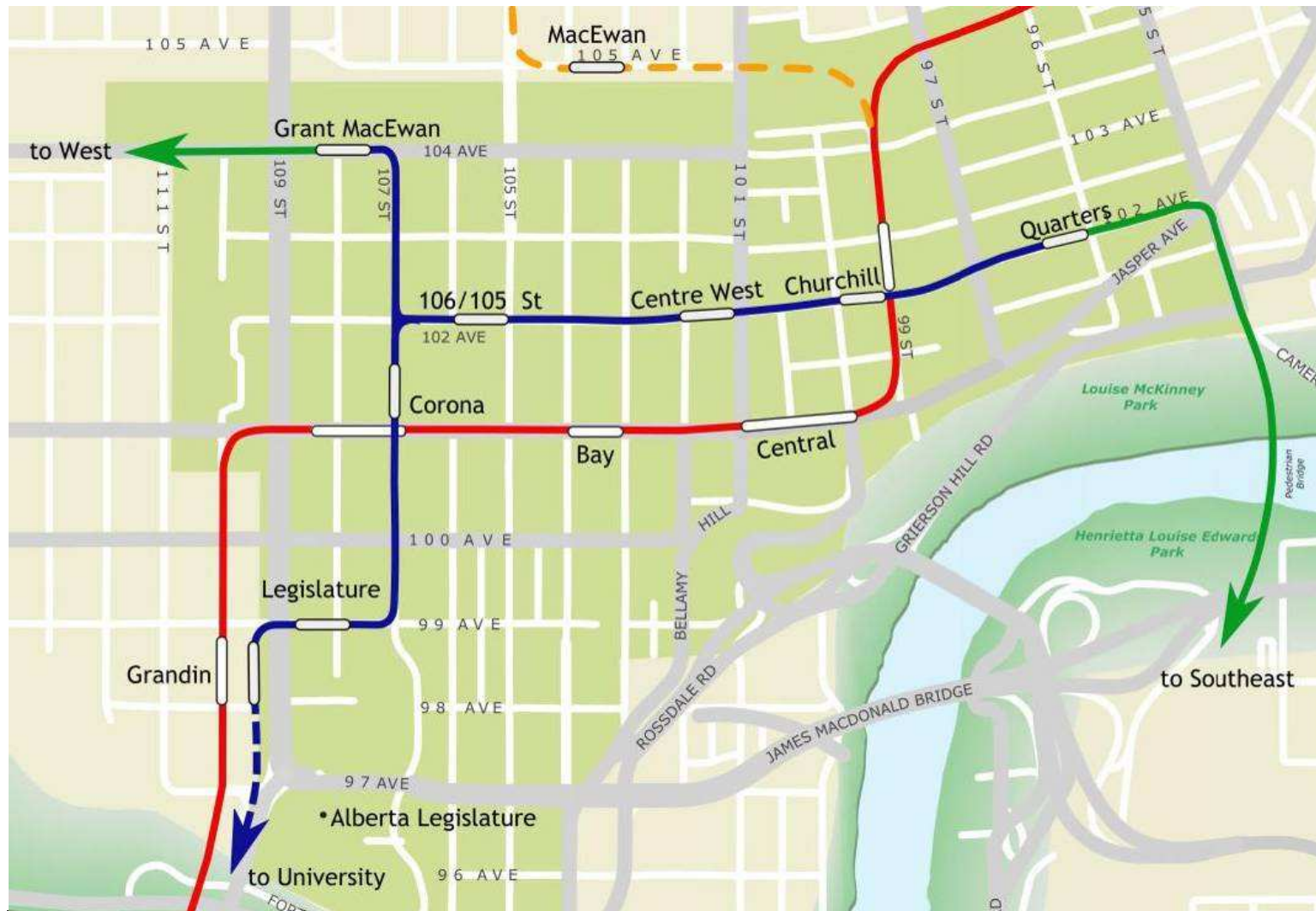
www.edmonton.ca/LRTPProjects

- Overview of station alternatives at:
 - Quarters
 - Muttart Station
 - Strathearn Station



Quarters Station

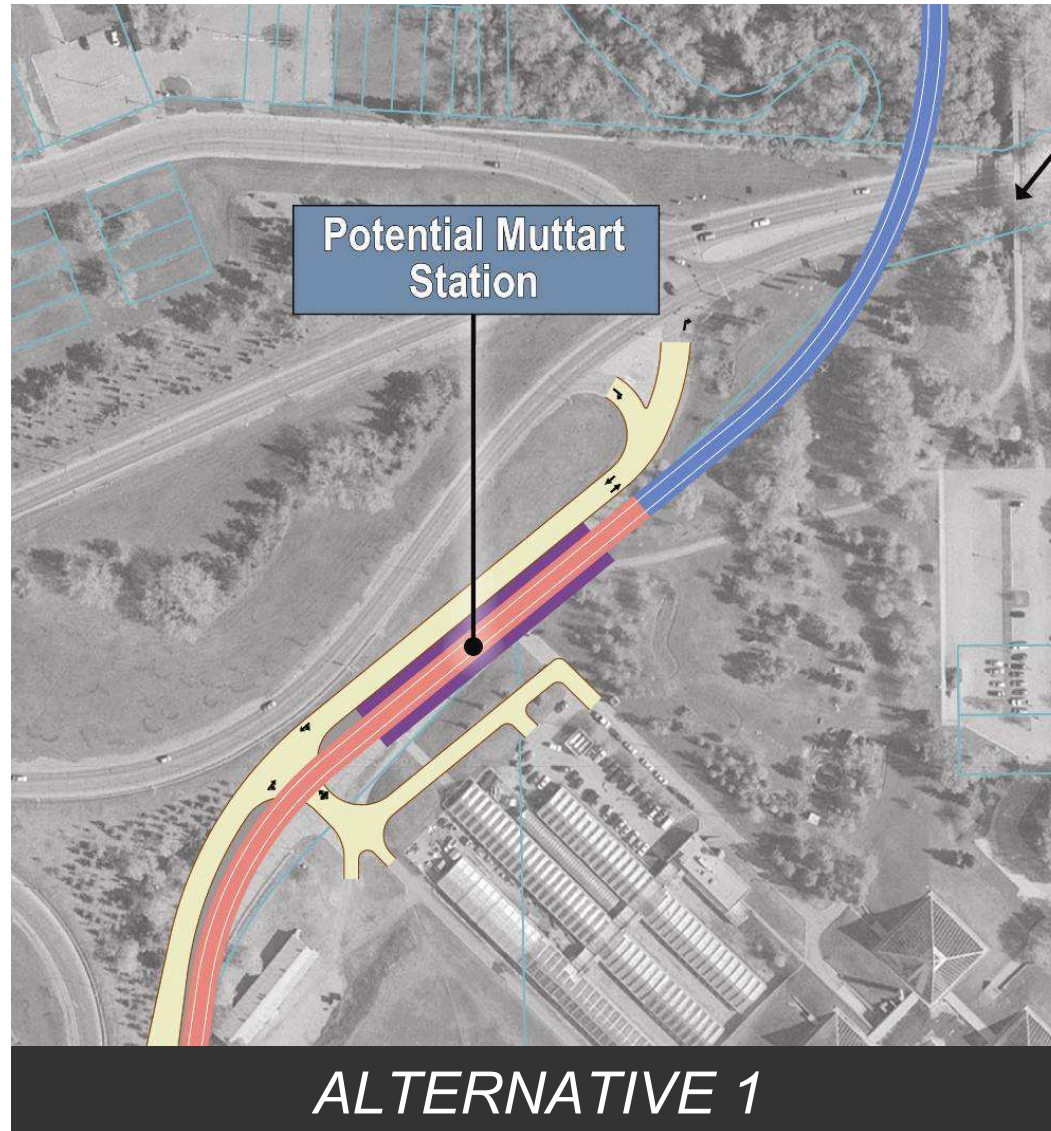
www.edmonton.ca/LRTProjects



Quarters

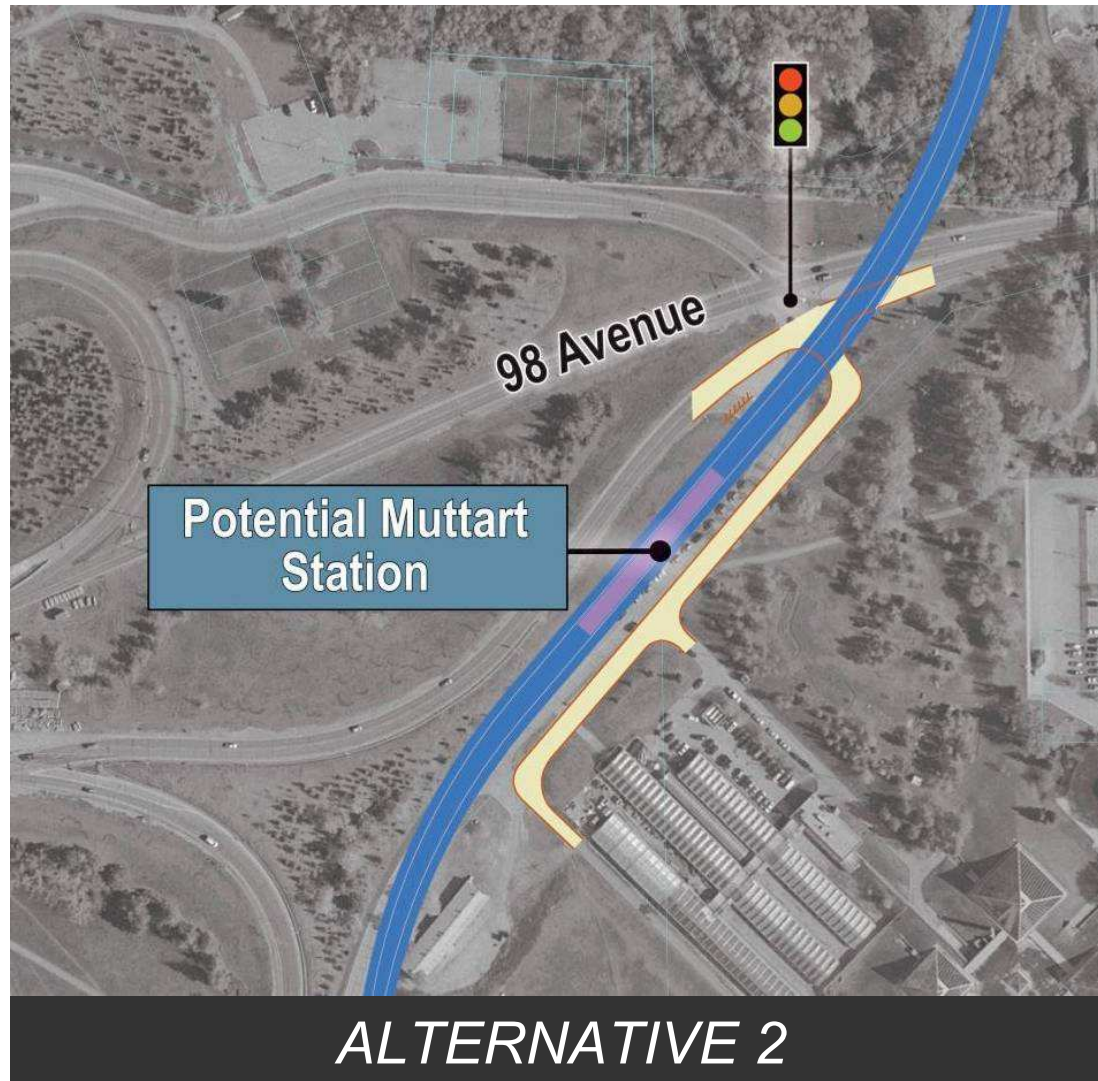
Muttart Station

www.edmonton.ca/LRTProjects



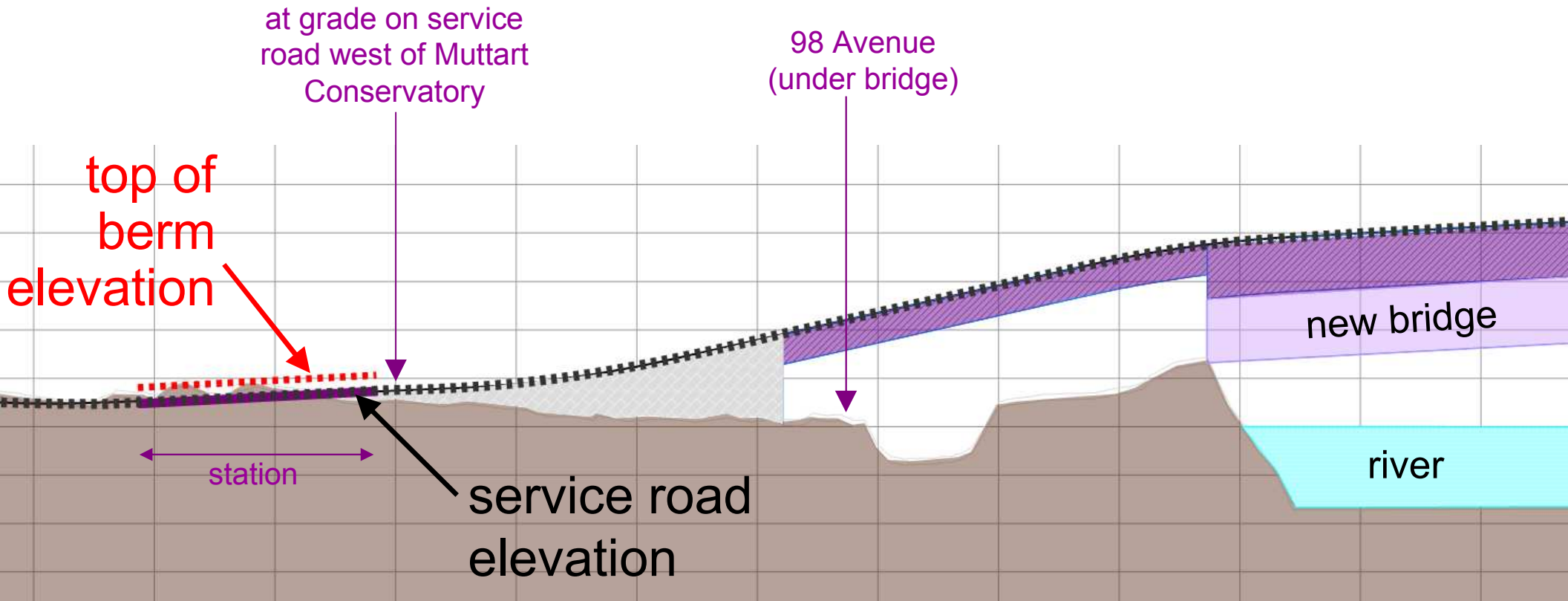
Muttart Station

www.edmonton.ca/LRTProjects



ROW Alignment - Segment A

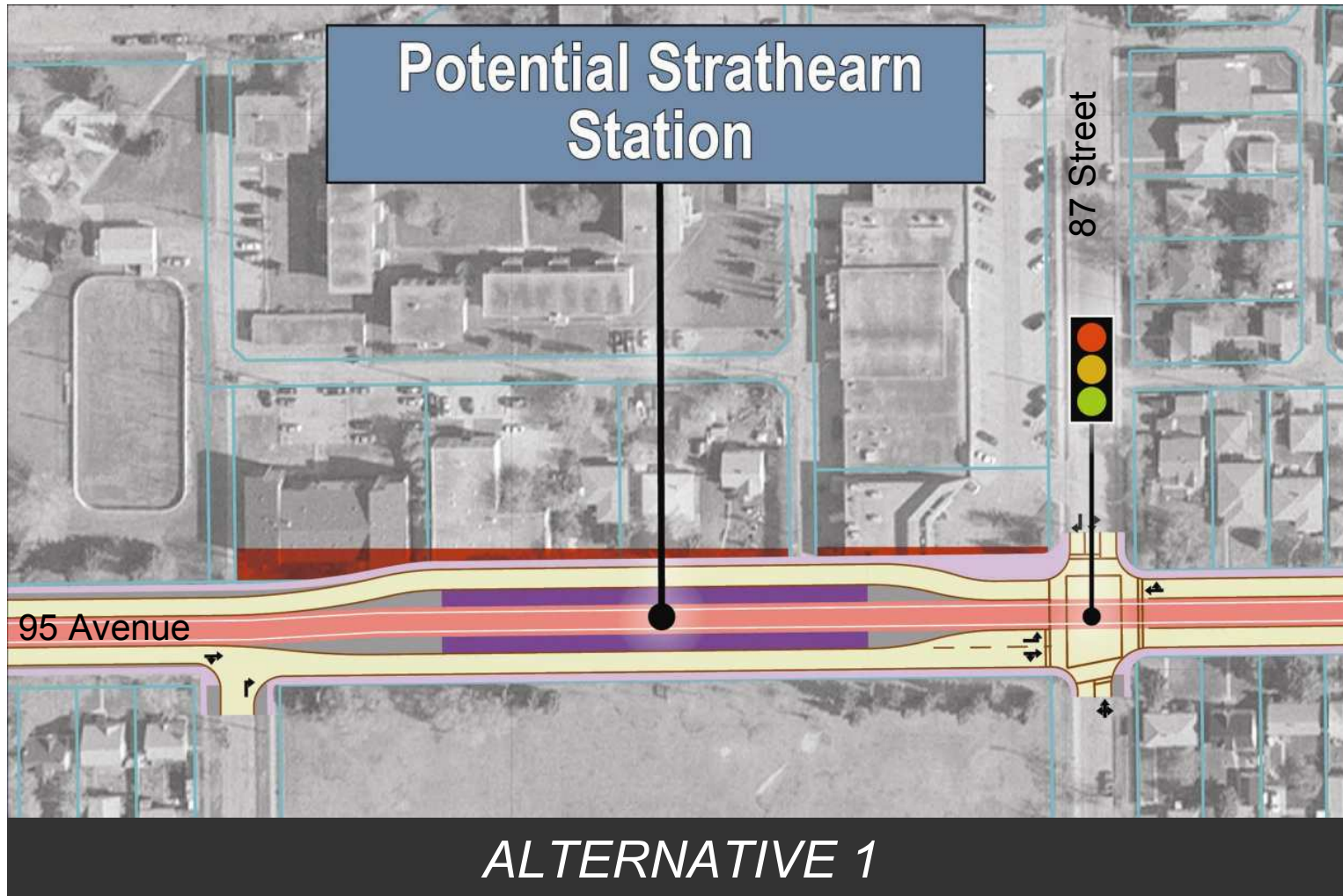
www.edmonton.ca/LRTProjects



PROFILE

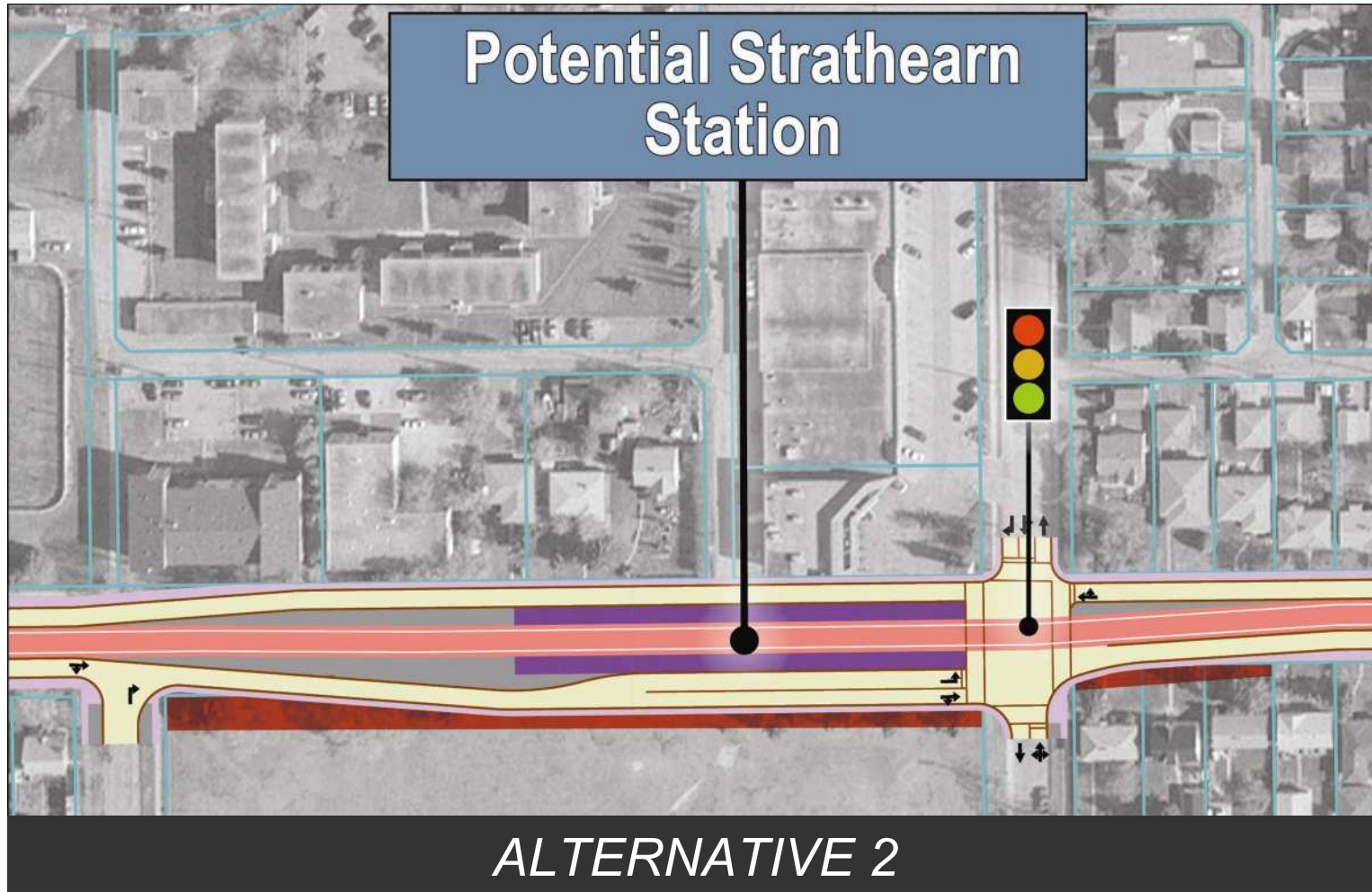
Strathearn Station

www.edmonton.ca/LRTPProjects



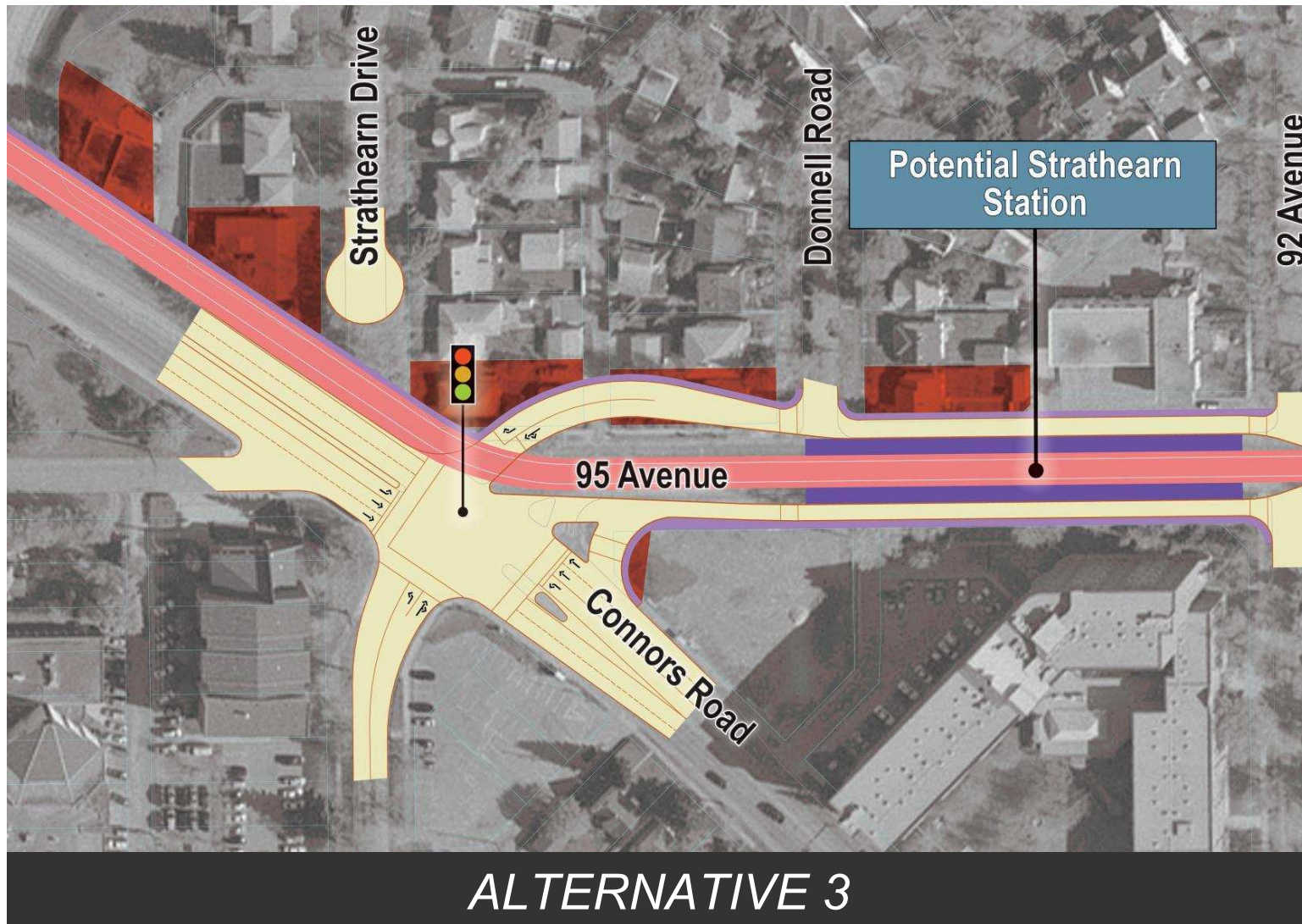
Strathearn Station

www.edmonton.ca/LRTPProjects



Strathearn Station

www.edmonton.ca/LRTProjects





Stations - Workshop Questions

www.edmonton.ca/LRTPProjects

Comment on the station in your neighbourhood

– How does this station fit into your neighbourhood?

*How does it affect your travel patterns?
(pedestrian, cyclist, or driver)*



Southeast LRT

96 Street / 102 Avenue to Strathearn

www.edmonton.ca/LRTProjects

Break



Southeast LRT

96 Street / 102 Avenue to Strathearn

www.edmonton.ca/LRTProjects

Session #3

Neighbourhood and Business Access



Neighbourhood and Business Access

www.edmonton.ca/LRTProjects

Comment on your chosen section

- *How do the alternatives affect the way you get around and in/out of your neighbourhood and access businesses?*

Neighbourhood and Business Access

www.edmonton.ca/LRTProjects

Basic Principles of Neighbourhood Access:

- Different roads serve different purposes
- LRT will change direct access to roads within its corridor
- Traffic signals will be located on major roads to facilitate LRT movement



Neighbourhood and Business Access

www.edmonton.ca/LRTProjects

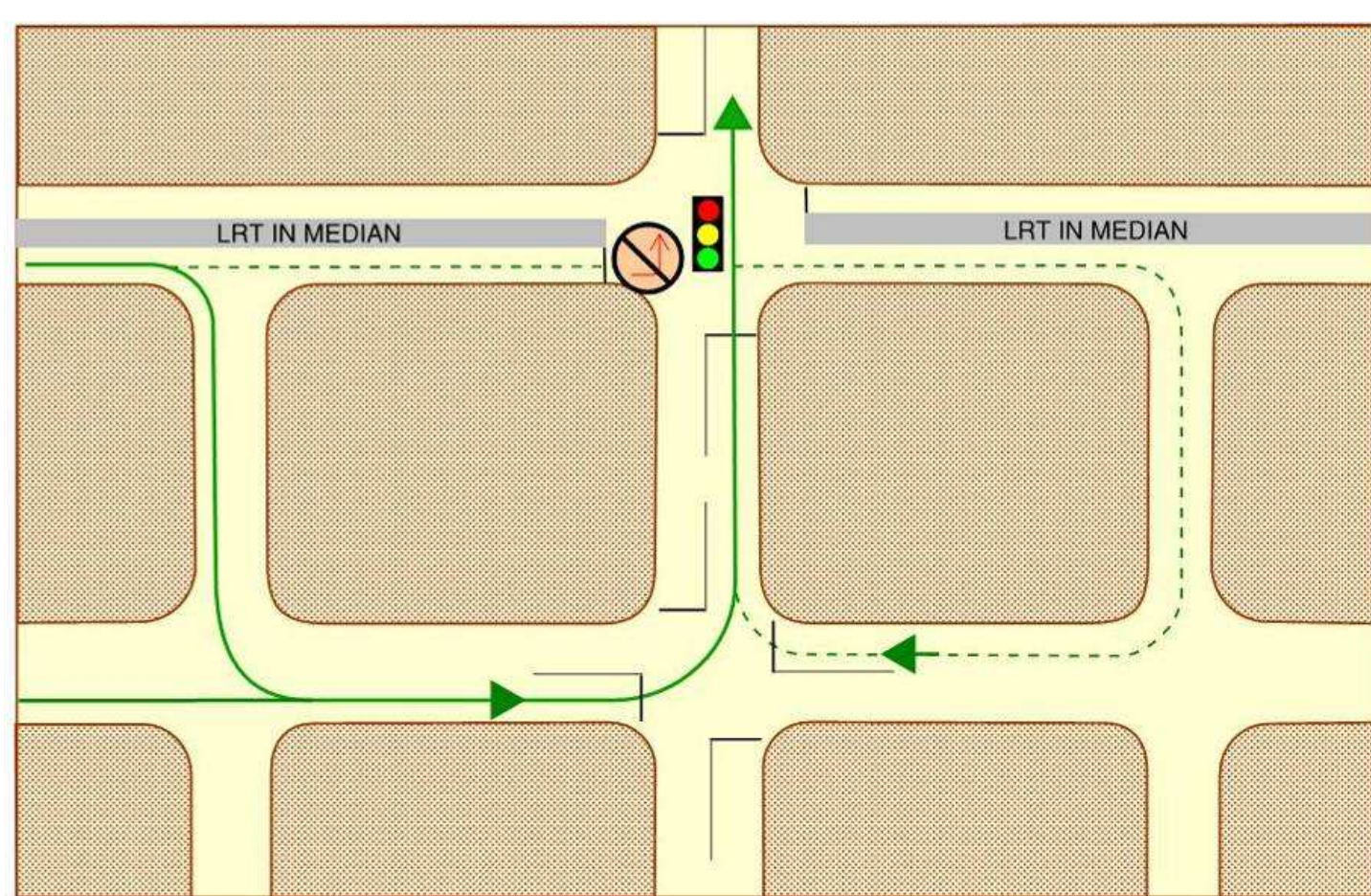
Basic Principles of Neighbourhood Access:

- Turns across LRT tracks will be at signalized intersections
- Not ALL signalized intersections will allow left hand turns
- A supporting street and circulation system will be provided



Neighbourhood and Business Access

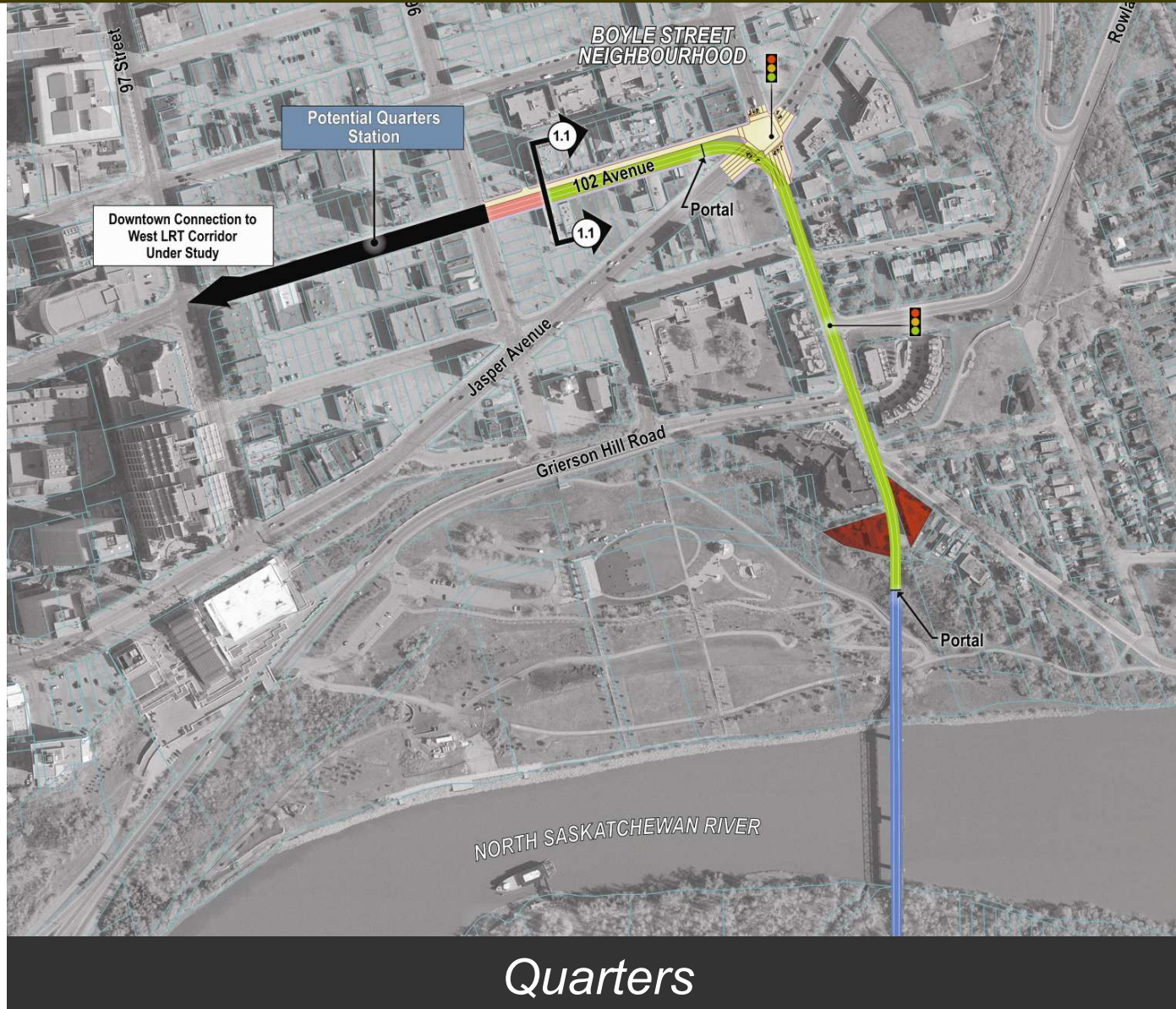
www.edmonton.ca/LRTProjects



- Existing left turn movement at intersection removed
- Future jug-handle movements provided

Neighbourhood and Business Access – Segment A

www.edmonton.ca/LRTProjects



Neighbourhood and Business Access – Segment B

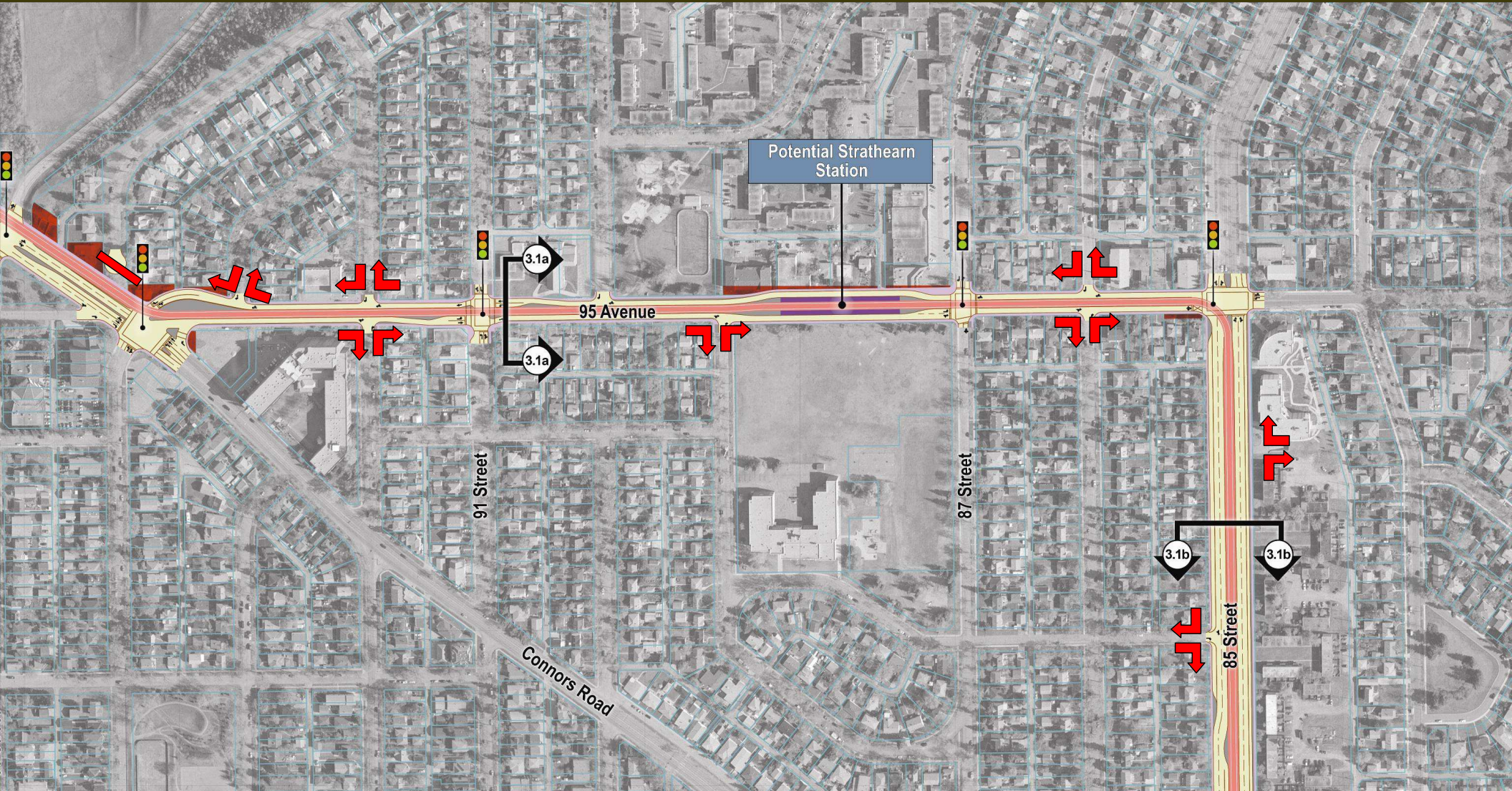
www.edmonton.ca/LRTPProjects



Connors Road

Neighbourhood and Business Access – Segment C

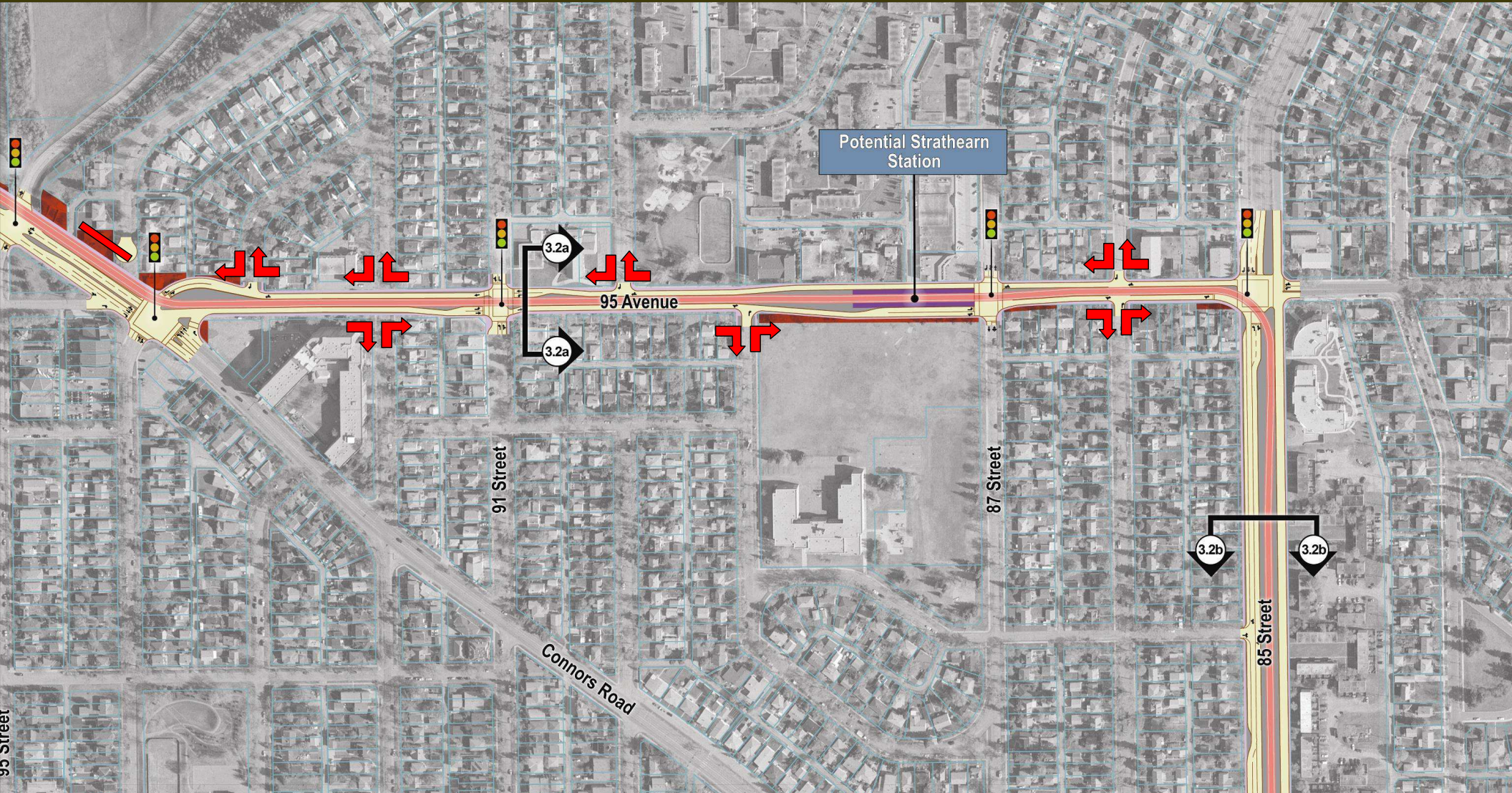
www.edmonton.ca/LRTPProjects



ALTERNATIVE 1 - Centre Running LRT

Neighbourhood and Business Access – Segment C

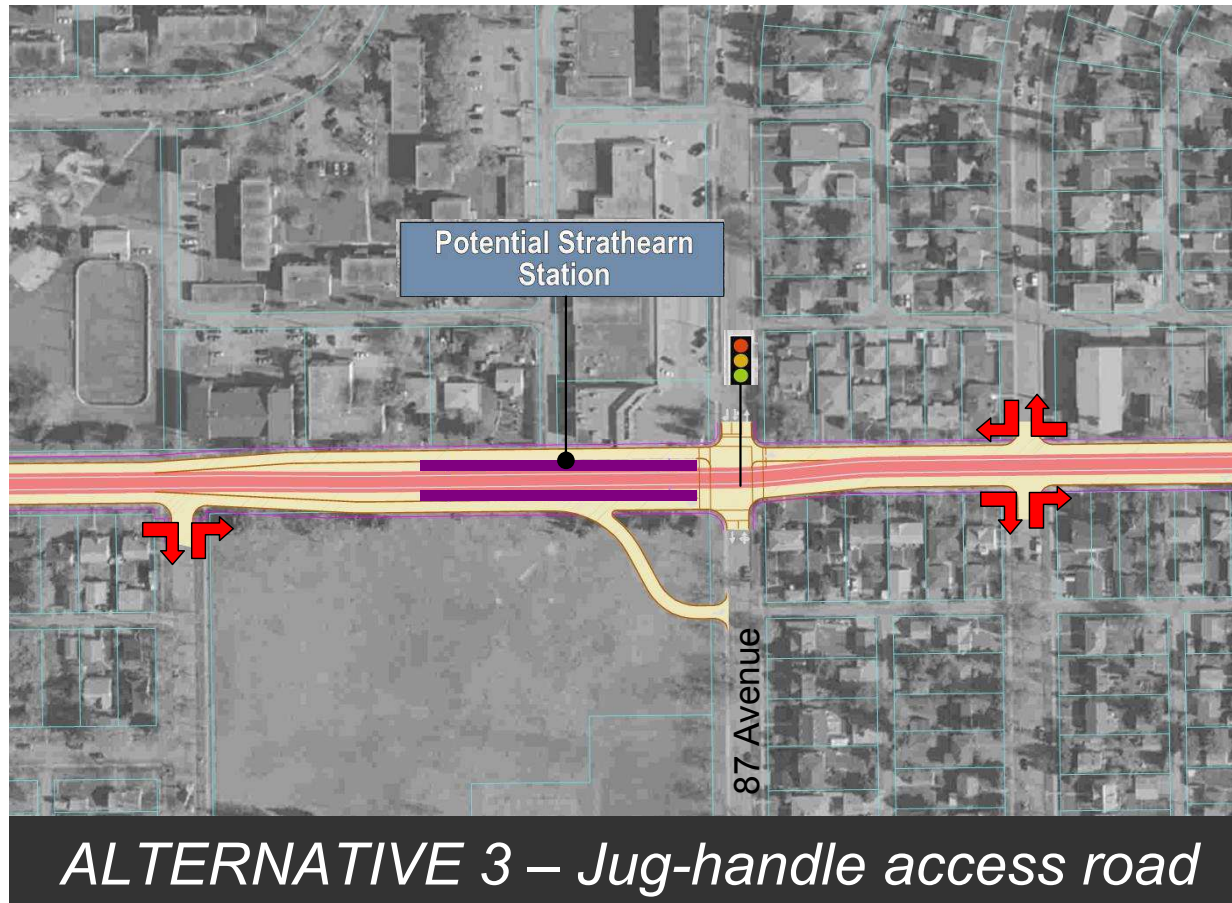
www.edmonton.ca/LRTPProjects

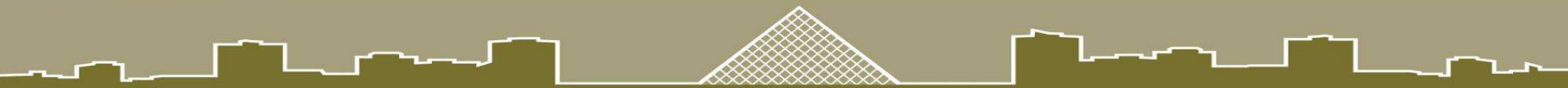


ALTERNATIVE 2 - Side Running LRT along 85 Street

Neighbourhood and Business Access – Segment C

www.edmonton.ca/LRTPProjects





Neighbourhood and Business Access – Workshop Questions

www.edmonton.ca/LRTPProjects

Comment on your chosen section

- How do the alternatives affect the way you get around and in/out of your neighbourhood and access businesses?*



Wrap Up

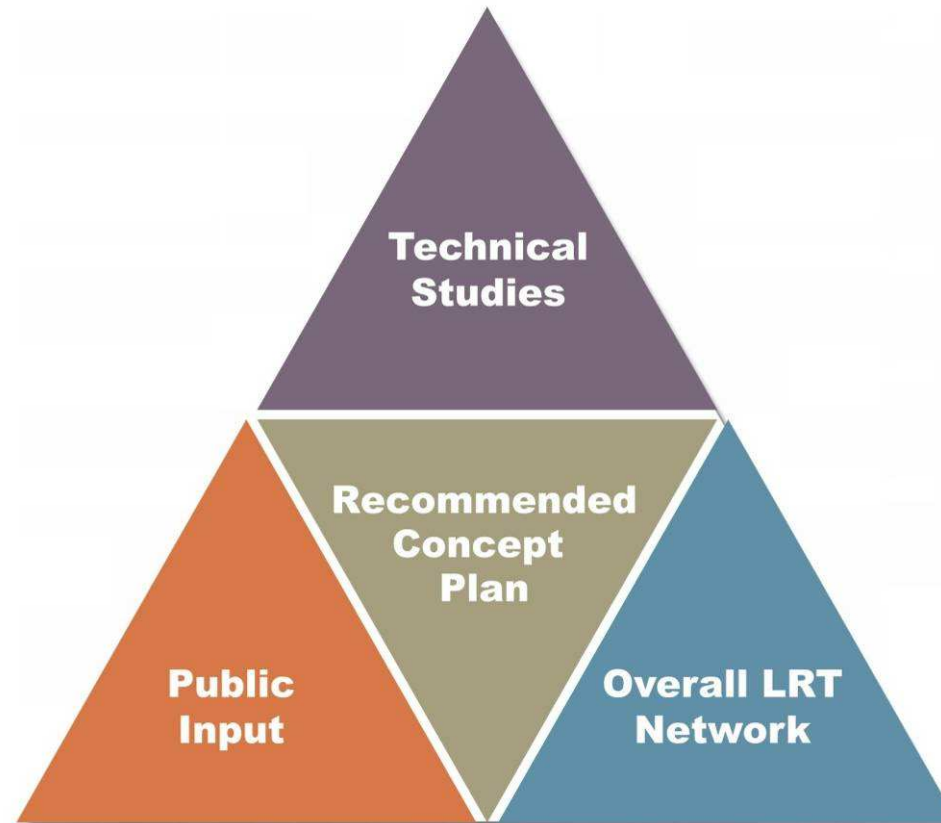
www.edmonton.ca/LRTProjects

- Fill out Questionnaires
- Attend other workshops
- Presentation available on website

www.edmonton.ca/LRTProjects

Wrap Up

www.edmonton.ca/LRTProjects



LRT Workshop Session Schedule

www.edmonton.ca/LRTProjects

West LRT	
May 4, 2010	Lewis Estates to Meadowlark
May 6, 2010	Meadowlark to SPR/142 St.
May 12, 2010	SPR/149 St. to SPR/124 St.
May 13, 2010	Groat Road to Downtown

Southeast LRT	
May 18, 2010	Downtown to Strathearn
May 19, 2010	Strathearn to Whyte Ave
May 26, 2010	Bonnie Doon to Wagner
May 27, 2010	Wagner to Mill Woods

www.edmonton.ca/LRTProjects

Next Steps

www.edmonton.ca/LRTProjects

Alignment Selection

Alignment Definition

Reporting

MAY

SEP

NOV

DEC

Workshops



Open Houses



Information Sessions



Public Hearing



*On going Consultation
with Key Stakeholders*





Southeast LRT

96 Street / 102 Avenue to Strathearn

www.edmonton.ca/LRTProjects

Thank you!