

Gariepy Neighbourhood and Alley Renewal

URBAN DESIGN ANALYSIS

Chapter 2: Develop Vision, Identify Opportunities and Generate Ideas



Edmonton

Table of Contents

1.0 Neighbourhood Vision & Guiding Principles	03
1.1 Neighbourhood Vision and Guiding Principles	03
1.2 Draft Vision for Gariepy	03
1.3 Draft Guiding Principles for Gariepy	04
2.0 Opportunities and Constraints Analysis	05
2.1 Opportunities and constraints analysis	05
2.2 Neighbourhood opportunities map	14

List of Maps

Map 1. Driving and traffic safety	06
Map 2. Biking	08
Map 3. Walking, rolling and public transit	10
Map 4. Parks, public gathering spaces and placemaking	13
Map 5. Urban Design Framework	15



1.0 Neighbourhood Vision & Guiding Principles


1.1 Neighbourhood Vision and Guiding Principles

Gariepy's draft Vision and Guiding Principles were created through the public engagement process in March 2022 during the Building a Project Vision Together and Exploring Opportunities stages and in discussion with the Gariepy Community Committee in June 2022. The community will be asked to confirm the Vision and Guiding Principles at the next stage in the process, Exploring Options and Tradeoffs, in fall 2022.

A **Vision** is a short description that sets the direction of where the community would like to see livability and mobility in the future. Important elements are identified for the City's work on roads, sidewalks, curbs, street lights and outdoor public spaces. These elements identify the most important things to look at when creating plans to renew Gariepy.

Guiding Principles provide more detailed ideas on how the Vision is applied to the neighbourhood design and describes the values and priorities for how people will live, work and play in their neighbourhood.

1.2 Draft Vision for Gariepy



Gariepy is a welcoming, friendly, active and involved community that looks out for one another. Our neighbourhood is culturally and generationally diverse. Our residents are well connected to parks, schools, commercial services and neighbouring communities. We take pride in our community and value social gatherings with our neighbours. We enjoy actively experiencing the safe, serene and peaceful surroundings that Gariepy has to offer.

1.3 Draft Guiding Principles for Gariepy



+ Maintain the existing vibrancy and connection to nature that characterizes the neighbourhood and makes it feel like a "hidden gem"



+ Ensure parks and open spaces are attractive, welcoming, safe and provide a range of recreational amenities that are usable for all ages and abilities



+ Create spaces in parks and commercial areas for residents to gather with friends and family and each other to build a sense of community and maintain the friendliness of the neighbourhood



+ Improve neighbourhood sustainability and climate resiliency by adding vegetation, reducing hard surfacing, and other innovations



+ Improve the safety and accessibility of roadways, crossings and sidewalks for all users including people who walk, roll, bike and drive



+ Establish connections to destinations and amenities within and outside of the neighbourhood



+ Ensure infrastructure like pathways, roads and sidewalks consider year-round use, improving winter useability and visual appeal



2.0 Opportunities and Constraints Analysis

2.1 Opportunities and constraints analysis

The following opportunities and constraints were identified through a combination of public engagement and analysis by the Project Team during the Building a Project Vision Together and Exploring Opportunities stages. Themes have been used to organize the various opportunities and constraints in the Gariepy neighbourhood.



Driving and Traffic Safety

Opportunities

Roadway redesign:

- + Explore the redesign of roadways to provide safe spaces for people who walk, roll, bike or drive
- + Replace aging surfaces for all roadways and alleys in the neighbourhood
- + Improve comfort for all users by incorporating various features (eg. curb extensions, raised crosswalks and medians) to slow traffic and reduce shortcutting
- + Using standard curbs with a lower height to better accommodate private driveways throughout the neighbourhood
- + School areas: Explore the design of the school drop-off and pick-up areas to reduce conflicts among users, enhance safety and improve movement for all users

Intersection improvements: Enhance existing crossings with improvements to enhance safety for people who walk and roll, such as: ramps, curb extensions, raised crosswalks or medians, markings, lighting and signage

Improvements to wide local roads:

- + Explore the redesign of existing wide roads and the feasibility of converting curbside sidewalks to boulevard sidewalks
- + Enhance the design of wide roads by incorporating landscaping, benches and other amenities to provide a more comfortable experience for people who walk, roll and bike

Signage: Add signage to assign right-of-way where missing, including at uncontrolled intersections, to improve traffic flow and avoid confusion among users

Constraints

- + Existing conditions such as utilities, mature trees and right-of-way width may require tradeoffs with certain roadway improvement opportunities
- + Certain opportunities to slow traffic, such as raised crosswalks and curb extensions may have implications for drainage infrastructure, which may require additional review and coordination



57 Avenue

Map 1. Driving and traffic safety




 Gariepy neighbourhood boundary

Opportunities

 Roadway redesign

 Intersection improvements

 Improvements to wide local roads

Notes:

1. All local/collector roads and alleys in the neighbourhood will be reconstructed and paved in coordination with the Neighbourhood and Alley Renewal
2. Signage and traffic controls will be reviewed neighbourhood-wide

 N 200m



Biking

Opportunities

Collector Bike Route: Create bike routes that connect to destinations in and around Gariepy, including along Callingwood Road.

Neighbourhood Bike Route: Create bike routes that establish links to existing bike infrastructure in other neighbourhoods, provide recreational opportunities and connect to natural amenities.

Wayfinding: Enhance and add new signage along pathways for people who bike, walk and roll.

Bike facility type: Create separate facility types for people of all ages and abilities who bike from people who drive, walk or roll to enhance their comfort in all seasons.

Constraints

- + Existing conditions such as utilities, mature trees and right-of-way width may require tradeoffs with certain bike route improvement opportunities, including facility type
- + Front driveways may impact the safety and feasibility of some types of bike facilities as vehicles will cross the bike facility and sidewalk to access a private driveway and garage



Breezeway through Gariepy Ravine




Breezeway to Callingwood Road

Map 2. Biking



 Gariepy neighbourhood boundary

 Existing bike routes

 Missing link (identified in the Bike Plan)

Opportunities

 Collector Bike Route

 Neighbourhood Bike Route

 Wayfinding

Notes:

1. Wayfinding opportunities will be reviewed once bike route locations are finalized

 N 200m



Walking, rolling and public transit

Opportunities

Enhanced existing sidewalk and pathway connections:

- + Evaluate all breezeways to examine if new walkway connections could be beneficial
- + Enhance sidewalks that provide a direct connection between destinations with amenities such as lighting, boulevard trees and benches

New pathways and sidewalks:

- + Improve connectivity and accessibility within and through Gariepy Park and Gariepy Ravine for people who walk or roll with wider and continuous sidewalk connections
- + Add new sidewalks and pathways to improve connections through Gariepy
- + Review the creation of shared alley spaces that connect destinations or create direct routes

Sidewalk and pathway design:

- + Explore opportunities to enhance and replace existing sidewalks and explore the feasibility of widening sidewalk connections and add new sidewalks at missing locations
- + Explore improvements to sidewalk design and roadway geometry at crossings. Improvements may include installing curb extensions at key locations to enhance the comfort and safety for people of all ages and abilities who walk or roll

- + Improve amenities along sidewalks and pathways to provide a more comfortable experience for people walking and rolling in Gariepy in all seasons. Amenities may include benches, waste bins, lighting, weather protection, public art and wayfinding.
- + Explore opportunities to convert curbside sidewalks to boulevard sidewalks throughout the neighbourhood

Safety:

- + Provide curb ramps at roadway crossings to create more accessible connections for people who walk and roll
- + Enhance lighting at key locations (along major walking and biking routes, within parks and at Lessard Mall) to improve the visibility of people who walk or roll for people who drive
- + Relocate catch basins away from intersection crossings to reduce pooled water and ice build-up

Public transit:

- + Enhance connections to bus stops and routes
- + Identify priority bus stops for additional bus stop amenities that improve user experience, such as winter weather protection

Interpretive signage:

- + Explore the opportunity to add interpretive signage along park pathways designed to engage with people who walk and provide information on history, natural processes, wildlife, etc.

Enhanced landscaping:

- + Explore opportunities to add new trees or convert curbside sidewalks to boulevard sidewalks
- + Explore the feasibility of converting hardscapes to permeable surfaces to improve drainage, aesthetics and reduce urban heat island effects
- + Identify opportunities to improve biodiversity and add natural habitat for wildlife


Constraints

- + Existing conditions such as utilities, mature trees and right-of-way width and availability may require trade offs with new, widened or enhanced sidewalks, breezeways or pathways
- + Edmonton Transit Services is responsible for assessing the need to add or remove bus stops and access to on-demand transit




Map 3. Walking, rolling and public transit

 Gariepy neighbourhood boundary

 Sports field

Opportunities

 Enhanced existing sidewalks and pathway connections

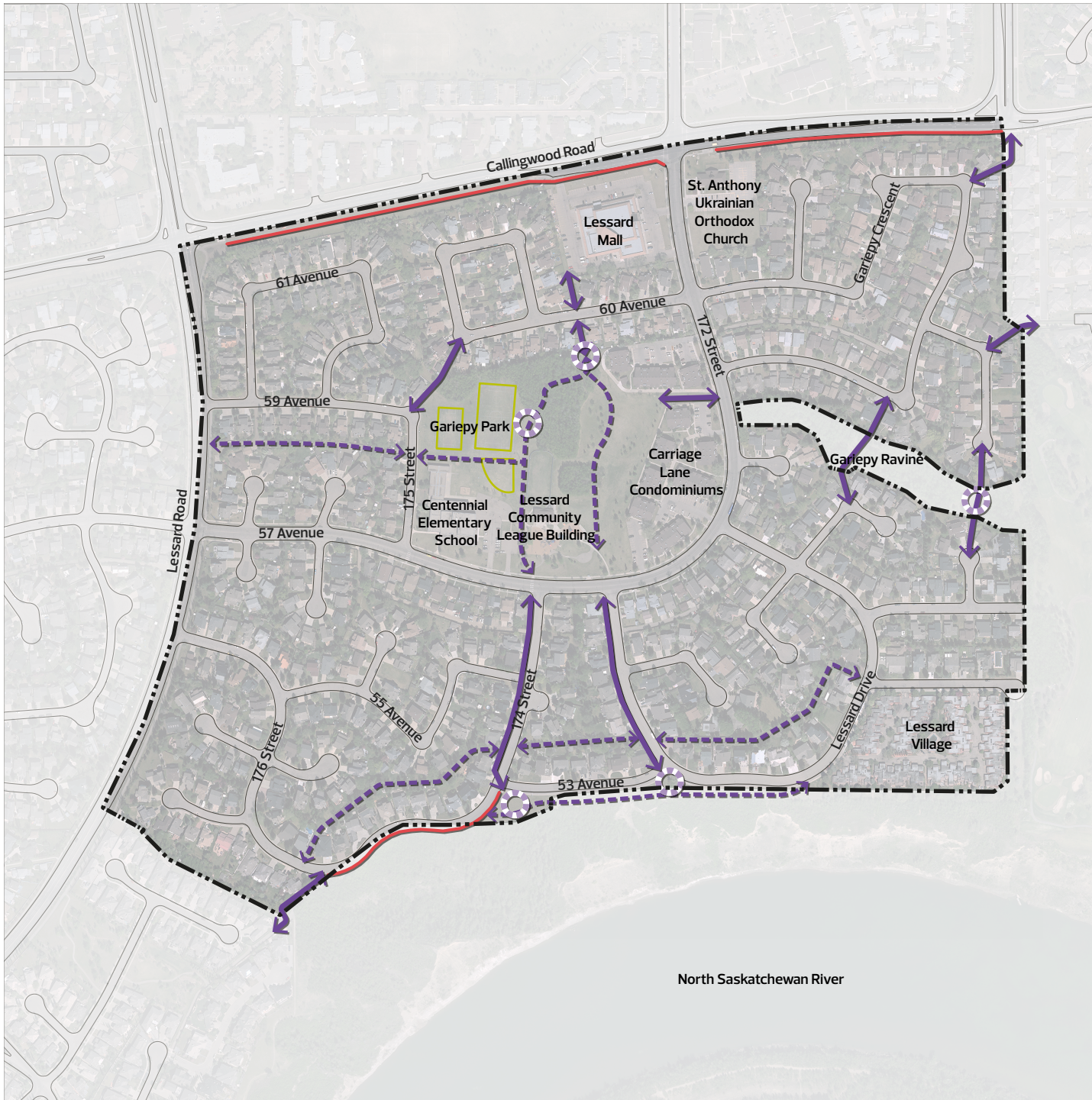
 New pathway

 New connection

 Interpretive signage

Notes:

1. Sidewalk replacement with curb ramps on all local/collector roads will be coordinated with the Neighbourhood and Alley Renewal
2. Interpretive signage opportunities will be reviewed once pathway locations are finalized
3. Widen all existing sidewalks (where possible)





Parks and public gathering spaces

The following opportunities and constraints will be reviewed for each of the park spaces identified in the neighbourhood, including Gariepy Park, Gariepy Ravine and the River Valley Top-of-Bank Park.

Opportunities

Pathways: Enhance connections within, and to, green spaces to improve accessibility in all seasons for people who walk, roll and bike

Safety: Explore the feasibility of adding new landscaping or fencing along the river bank to enhance safety

Plantings and trees: Add new trees and landscaping around parks and playgrounds to enhance comfort, aesthetics and environmental benefits

Seating areas: Add new seating areas to create spaces for community members to gather, socialize and connect

Park facilities: Add new amenities to provide more opportunities for the community to enjoy the parks and open spaces, such as benches, lights, picnic tables and waste bins

Recreation amenities: Explore amenities that could include play opportunities, dog-off-leash areas and age-friendly features such as age-friendly outdoor exercise equipment, community gardens and seating areas with chess or checker tables

Community-led projects: Explore ideas and support community-led projects such as enhanced playground equipment, bulletin boards and public art

Viewpoint improvements: Explore enhancing existing viewpoints and corridors along the River Valley Top-of-Bank Park and ensure they are accessible to people of all ages and abilities

Constraints

- + Improvements to Gariepy Park may be limited to land owned by the City
- + Sports fields, trees and topography may impact the feasibility of new or widened sidewalks and pathways and new park amenities
- + Underground utilities may need to be upgraded to service additional recreational opportunities and upgraded park facilities
- + Some improvements may be located within the Community League agreement area and are out of scope for Gariepy Neighbourhood Renewal. These projects would be classified as community-led projects
- + Maintenance of community-led projects would be the responsibility of the community



Gariepy Park



Placemaking

Opportunities

Entrance features: Explore the feasibility of partnering with the community to add new signage and features along key entrances in the neighbourhood

Corner store area: Enhance the public realm near Lessard Mall to create an improved gathering space and pedestrian oriented shopping area in coordination with with the landowners and the Corner Stores Program

Seating areas: Create seating areas with benches, landscaping and lighting along internal pathways in park spaces and along key routes where people frequently walk, roll and bike

Central gathering spaces/plaza:

- + Develop plazas and/or enhanced landscape spaces for people of all ages to gather and celebrate
- + Enhance existing natural view corridors with amenities that encourage people to gather and connect with one another

Outdoor learning area (school-led): Add interpretive signage in park spaces that provide educational information on natural systems or history of the area

All season design: Integrate design elements such as enhanced lighting and positioning trees near seating areas and along pathways to provide shade from the sun and shelter from wind, snow and rain

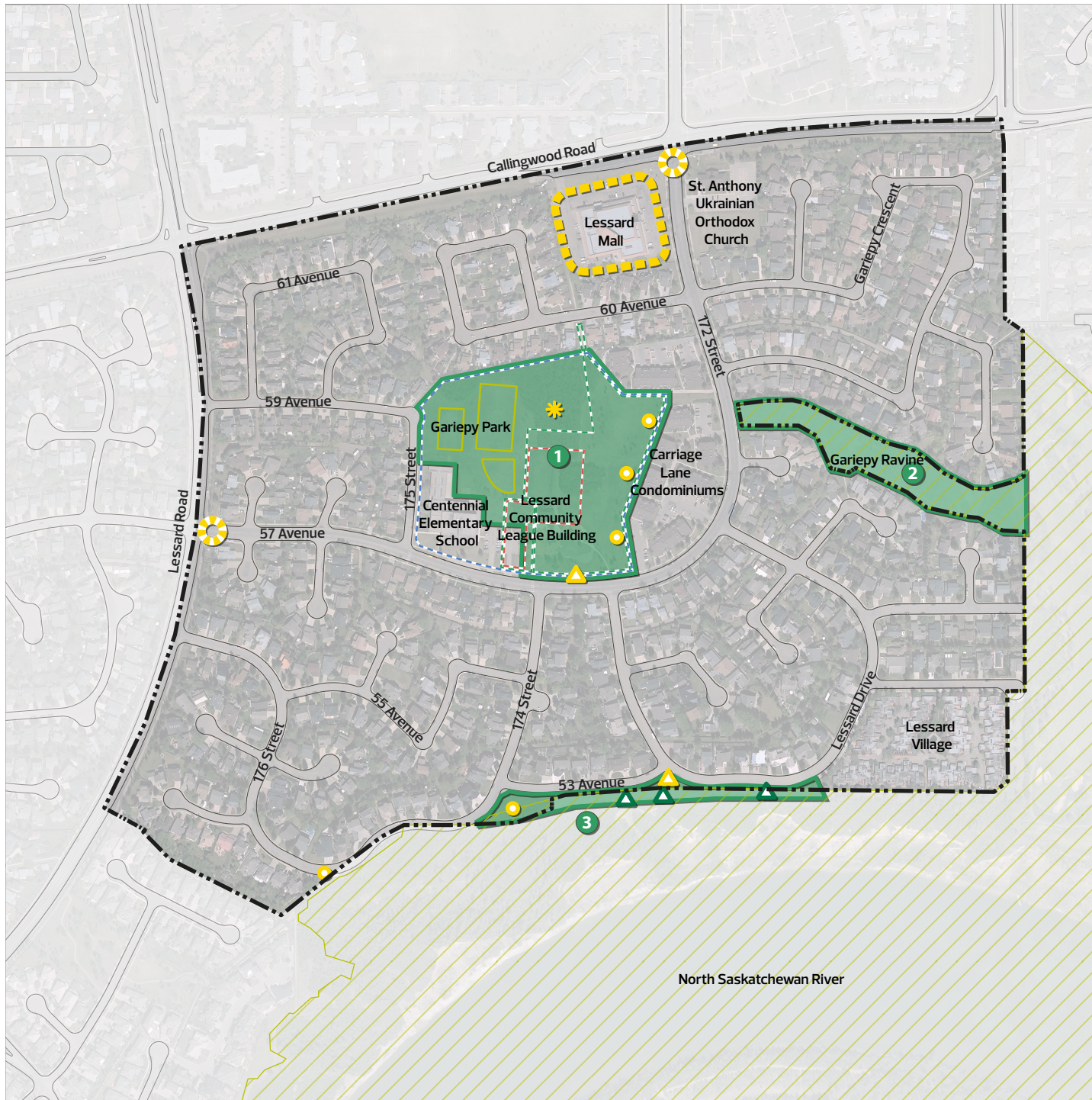
Constraints

- + Existing conditions, utilities and mature trees may limit some opportunities
- + Improvements on the private property of Lessard Mall are dependent on property owner and funding approval













Lessard Mall

Map 4. Parks, public gathering spaces and placemaking



-  Gariepy neighbourhood boundary
-  Community League Agreement Area
-  Joint use area
-  Parks holding
-  Sports field
-  North Saskatchewan River Valley and Ravine System Protection Overlay

Opportunities

-  Park improvements
 -  1 Gariepy Park
 -  2 Gariepy Ravine
 -  3 River Valley Top-of-Bank Park
-  Viewpoint improvements
-  Entrance feature
-  Corner store area
-  Seating area
-  Central gathering space/plaza
-  Outdoor learning area (school-led)

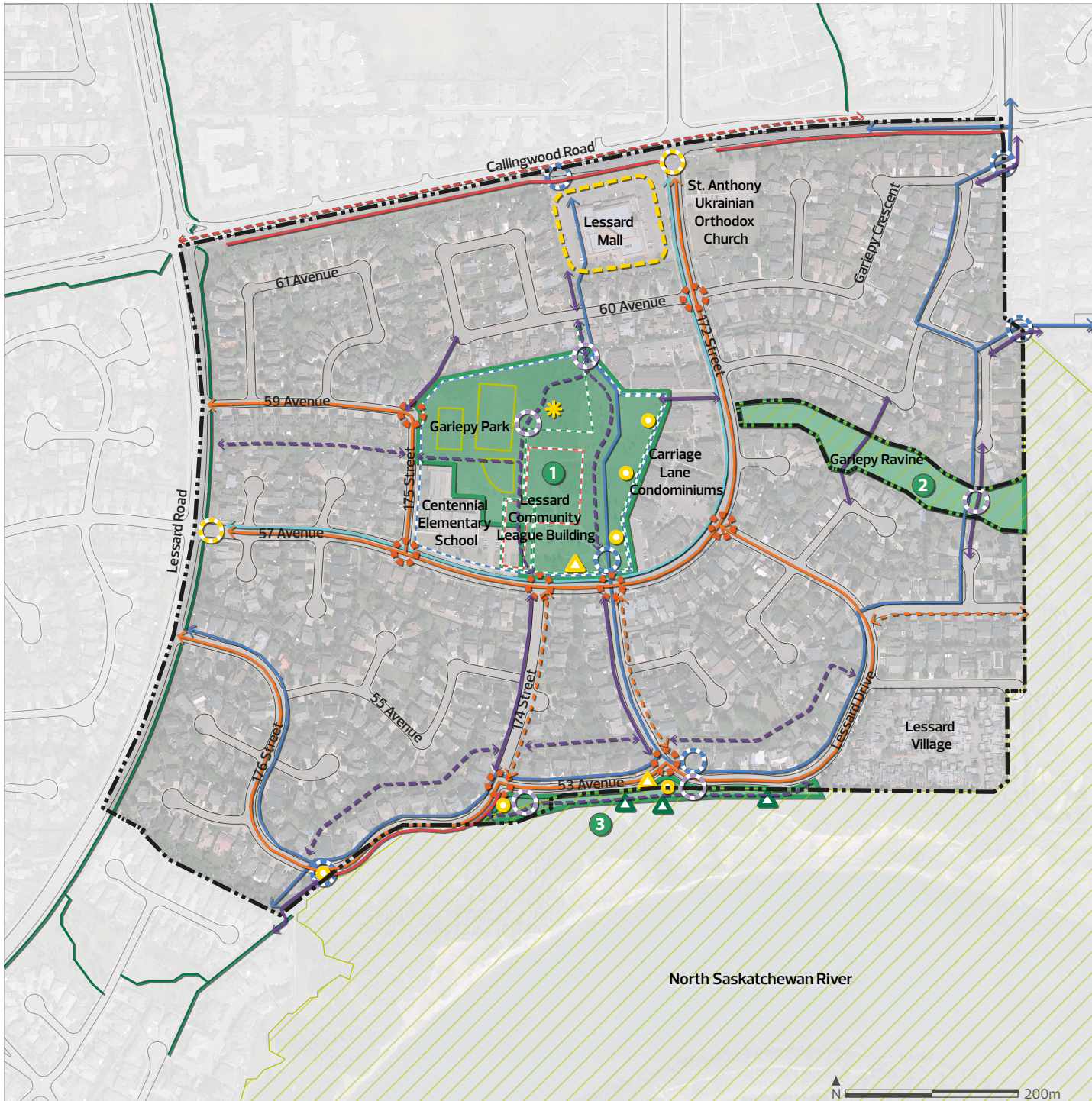


2.2 Neighbourhood opportunities map

The following map brings together the themes identified in the previous sections. It is important to understand that each design decision will not be made in isolation and can be influenced by other factors. When developing design options, the Project Team will consider how a change in one area will also impact or change other streets and sidewalks throughout the neighbourhood. When the Exploring Options and Tradeoffs stage begins, it will be important to view the designs as an integrated system, working together to provide the best experience for all users.



Map 5. Urban design framework



- Gariepy neighbourhood boundary
 - Community League Agreement Area
 - Parks holding
 - Joint use area
 - Sports field
 - North Saskatchewan River Valley and Ravine System Protection Overlay
 - Existing bike routes
 - Missing link (identified in the Bike Plan)
- Driving and traffic safety opportunities**
- Roadway redesign
 - Intersection improvements
 - Improvements to wide local roads
- Biking opportunities**
- Collector Bike Route
 - Neighbourhood Bike Route
 - Wayfinding
- Walking, rolling and public transit opportunities**
- Enhanced existing sidewalks and pathway connections
 - New pathway
 - New connection
 - Interpretive signage
- Parks, public gathering spaces and placemaking opportunities**
- Park improvements
 - 1 Gariepy Park
 - 2 Gariepy Ravine
 - 3 River Valley Top-of-Bank Park
 - Viewpoint improvements
 - Entrance feature
 - Corner store area
 - Seating area
 - Central gathering space/plaza
 - Outdoor learning area (school-led)



June 2022

Edmonton