



Walk Edmonton

Walk Edmonton is an initiative that develops and shares maps and resources to facilitate and promote walking for both recreation and as active transportation. Visit our website for links to other walking resources and maps.

edmonton.ca/walkedmonton
780-944-5339

Other Walking Resources

Alberta Centre for Active Living
centre4activeliving.ca
780-427-6949

Canada Walks
canadawalks.ca

UWalk
UWALK.ca

Shape (Safe Healthy Active People Everywhere)

shapeab.com

Get involved with Walk to School Week and Walking School Bus Programs

edmonton@shapeab.com
780-406-8530

The Benefits of Walking

Walking... a healthy journey!

Ranked the number one activity of choice among Canadians, walking is a prescription for improved health and wellness.

- Releases the body's tension and stress.
- Refreshes the mind and body, especially when walking outdoors.
- Allows you to connect with your community.
- Offers an excellent way to socialize with family and/or friends.
- Increases "eyes on the street", enhancing community safety.



HOPE Mural

Walking with your Dog

Edmonton has over 40 locations where you can enjoy your walk while your dog is off-leash. Please remember that all sites where dogs are permitted to be off-leash are multi-use areas used by all. Your dog must be leashed when not in a designated off-leash area. The dog icons show on this map are placed in the approximate location of each off-leash area, but do not show the precise boundaries. For more information, including details on off-leash boundaries, check the Parks for Paws Brochure or go to edmonton.ca (keyword off-leash)

**There are 1,440 minutes in a day,
schedule 30 of them for walking!**

Local Contacts

Boyle Street Community League
9538 103A Avenue
780-426-9265
Boylestreetcl.com

McCauley Community League
10826 - 95 Street NW
780-428-5332
Mccauleycl.com

Riverdale Community League
9231 - 100 Avenue
Riverdaliens.net

Boyle McCauley News
Bmcnews.org

Edmonton Public Library - Stanley A Milner Branch
7 Sir Winston Churchill Square
(Under re-construction
2017 - 2020)
780-496-7000
Epl.ca

- Sprucewood Branch
11555 - 95 Street
780-496-7099

Commonwealth Community Recreation Centre
1100 Stadium Road
311

Chinatown and Area Business Association
301, 9664 - 106 Avenue
780-423-2628
brz@telus.net

Viva Italia District Association
vivaitaliaedmonton.com
780-428-0754 or
780-424-4869

City of Edmonton - McCauley Revitalization
edmonton.ca/McCauley
780-496-6887

Weather
780-468-4940

City Information
Call 311

Emergency Contacts

Police/Ambulance/Fire
911

Police Complaint Line
780-423-4567

Walking Resources

Alberta Centre for Active Living
centre4activeliving.ca
780-427-6949

Canada Walks
canadawalks.ca

About Community Walking Maps

This Community Walking Map is part of a series of walking guides. Each map is created as a joint project of Walk Edmonton and local Community groups to promote walkable communities. Contact us to find out if your community has an edition of this map series or to find out more about creating a map.

Walkedmonton@edmonton.ca
780-944-5339



Printed 2018

COMMUNITY WALKING MAP

Boyle Street Including the Neighbourhoods of McCauley & Riverdale



Edmonton



Glow Lantern Parade



This promenade is part of Edmonton's bike lane network and features contemporary public art and streetcaping. While recent real estate investment has set Boyle Street on the path to becoming a high-density urban hub, the community also offers residents and visitors a retreat from the bustle of downtown life. Connected to Dawson Park, Kinnaird Ravine and Louise McKinney Riverfront Park, Boyle Street is a stones throw away from numerous festivals, sporting events and other public gatherings. Its strategic location between Edmonton's downtown core and river valley green belt makes this district a year-round destination for recreation, relaxation and celebration.

Boyle Street is one of Edmonton's oldest neighbourhoods and the site of the city's original downtown. Its pedestrian network is a web of narrow streets that trace the boundaries of historic river lots, overlaid with Edmonton's modern grid road system. Signs of the past are everywhere and the heritage buildings that dot the neighbourhood's streetscapes tell an architectural story of diversity and resilience. Historically a working class neighbourhood, Boyle Street has welcomed generations of migrants and immigrants starting a new life in Edmonton. The community is deeply rooted in cultural diversity and encompasses a large part of Edmonton's original Chinatown. Boyle Street is a neighbourhood in transition, where each year brings new signs of change. It is home to The Quarters Downtown, an ambitious, 40-hectare urban renewal project. Since this award-winning revitalization initiative launched a decade ago, the area has seen significant transformation. Divided into four sub-districts or "quarters", its urban design centres on the Armature, a pedestrian-friendly green street.

The Community of Boyle Street



Legend

- Commercial
- Parkland
- Residential Area
- Stairs
- Crosswalk with Signal
- Bus Stop
- Funicular
- Sample walking routes:
 - 800 m Cappuccino Walk
 - 800 m Tea Walk
 - 1.37 km Olivia's Walk
 - 2 km Church Street
 - 2.8km Flood Route
 - 3.6km Point of View
- Alleys
- Roadway
- Shared Use Pathway
- Trails
- Sidewalk
- LRT
- Valley Line LRT under Construction

Scale

0.0 0.2 0.4 0.6

Kilometres

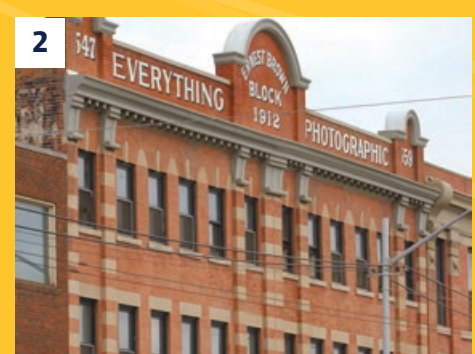
0.75 Kilometres = About 10 minutes walking
About 1,000 steps walking
About 3 minutes cycling

BOYLE STREET Legend

	Art Gallery/Studio		Off-Leash Area
	Bakery		Pharmacy
	Bank		Picnic Site
	Bookstore		Place of Worship
	Childcare Centre		Playground
	Coffee Shop/Cafe		Police
	Community Garden		Post Box/Post
	Community League		Pub
	ETS Bus Transit		Public Art/Monument/Statue
	Fire-Ambulance		Public Washroom
	Grocery Store		Recycling Centre
	Health Centre/Medical		Restaurant
	Heritage Home		School
	Heritage Tree		Scenic Viewpoint
	Hotel		Shopping Area
	Late Night Store		Skating Rink
	Library		Sports Fields
	LRT Station		Spray Deck
	Mural		Theatre
	Museum		Toboggan Hill



1 A view of the North Saskatchewan River from Boyle Street. Edmonton's River Valley is the largest urban park in Canada, with more than 160 kilometres of maintained pathways. (Photo Credit: Barb Long)



2 Ernest Brown Block The Brighton Block consists of a three-storey Edwardian-era brick mixed-use building. This building contained the studio and workshop of one of Edmonton's most notable photographers, Ernest Brown. (Photo Credit: Barb Long)



3 Cyclists pedal through Boyle Street's Quarters district during a province-wide race. The area has become a hotspot for festivals and major events. (Photo Credit: Barb Long)



4 Boyle Street Community Plaza is a community hub in the heart of the Boyle Street neighbourhood. (Photo Credit: Joelle Reiniger)



5 Young artists from iHuman Youth Society have brightened up the neighbourhood with mural and graffiti art. (Photo Credit: Barb Long)