

Welcome

Metro Line Northwest LRT Extension Project - Phase 1

Today's information session provides you with an update on Phase 1 of the Metro Line NW LRT extension project, and an opportunity to learn and ask questions about the final preliminary design.

Blatchford Community Update




Interested in what's happening at Blatchford? Visit our team today to learn more about neighbourhood sustainability, the first stage of community development, and much more!

Metro Line NW LRT Project

For more information
on the Metro Line NW
LRT project, please visit
edmonton.ca/metronw



Future Metro Line NW LRT Extension

-  Current Metro Line
-  Phase 1 Metro Line NW Extension (proceeding now)
-  Phase 2 Metro Line NW Extension (5+ years)

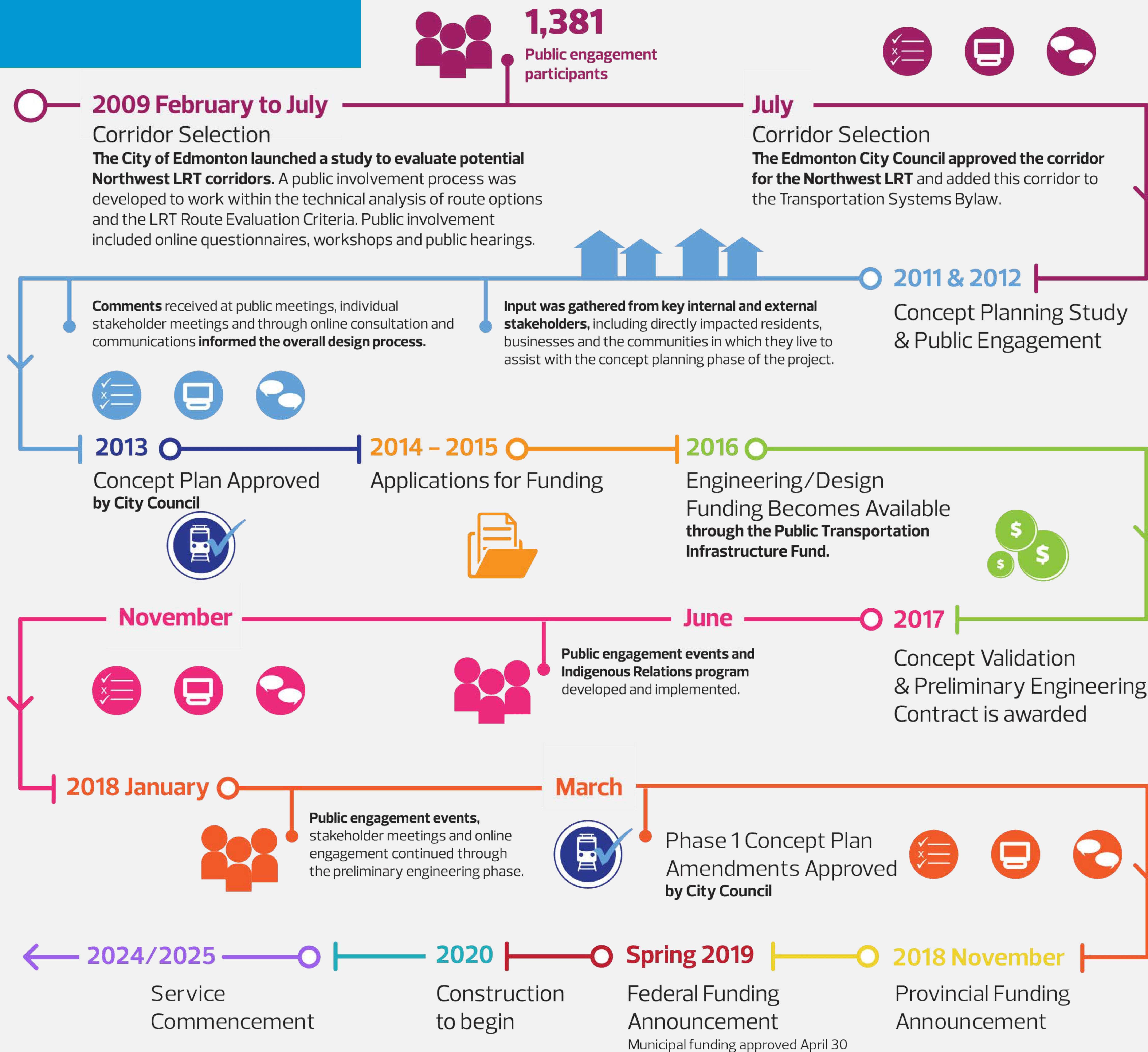
Edmonton



Metro Line

NW LRT Project

History



Metro Line

NW Extension Funding Overview



PROVINCIAL FUNDING

On November 1, 2018, the province committed \$131 million to the Metro Line NW extension project.



FEDERAL FUNDING

On March 11, 2019, the federal government committed \$127 million to the Metro Line NW extension project.



MUNICIPAL FUNDING

On April 30, 2019, the City of Edmonton committed \$70 million to the Metro Line NW extension project.

Metro Line NAIT/Blatchford Market Station*

NAIT's exciting acquisition of 13.27 hectares (32.79 acres) on the Blatchford development site, west of main campus at Princess Elizabeth Avenue and 109 Street, along with the construction of the Blatchford community, means the surrounding area is going to change significantly! This station will service Blatchford Town Centre, a central component of the Blatchford development.

The design of the plaza spaces around NAIT Station will connect pathways and passenger amenities that will meet current needs while ensuring there is room for future expansion.

There will be no roads adjacent to the LRT tracks, giving way to an exclusive pedestrian plaza with landscaping and places to rest and relax.

*Station name under review by Edmonton Naming Committee.



NAIT/Blatchford Market Station

Metro Line Blatchford Gate Station*

The Blatchford site is one of the City of Edmonton's most important heritage areas. The former airfield played an integral role in transforming Edmonton from a town into a leading Canadian city. Throughout the community, Blatchford will recognize the important history of the airport while looking forward to its exciting future. The Blatchford Gate Station will service both commercial and residential areas and the integration will allow residents and others to be able to enjoy accessible and convenient transportation.

* Station name under review by Edmonton Naming Committee.



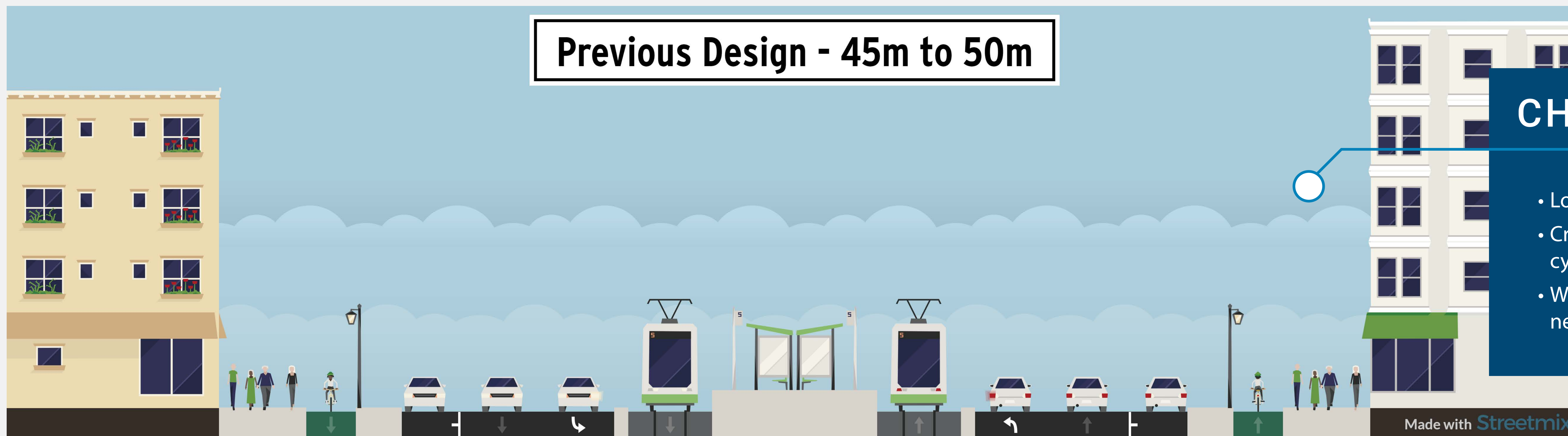
Blatchford Gate Station

Metro Line

Blatchford Gate Station

Since our last event in January 2018, changes have been made to the design of the Metro Line NW LRT at Blatchford Station. We made these changes based on challenges that were identified in the design phase.

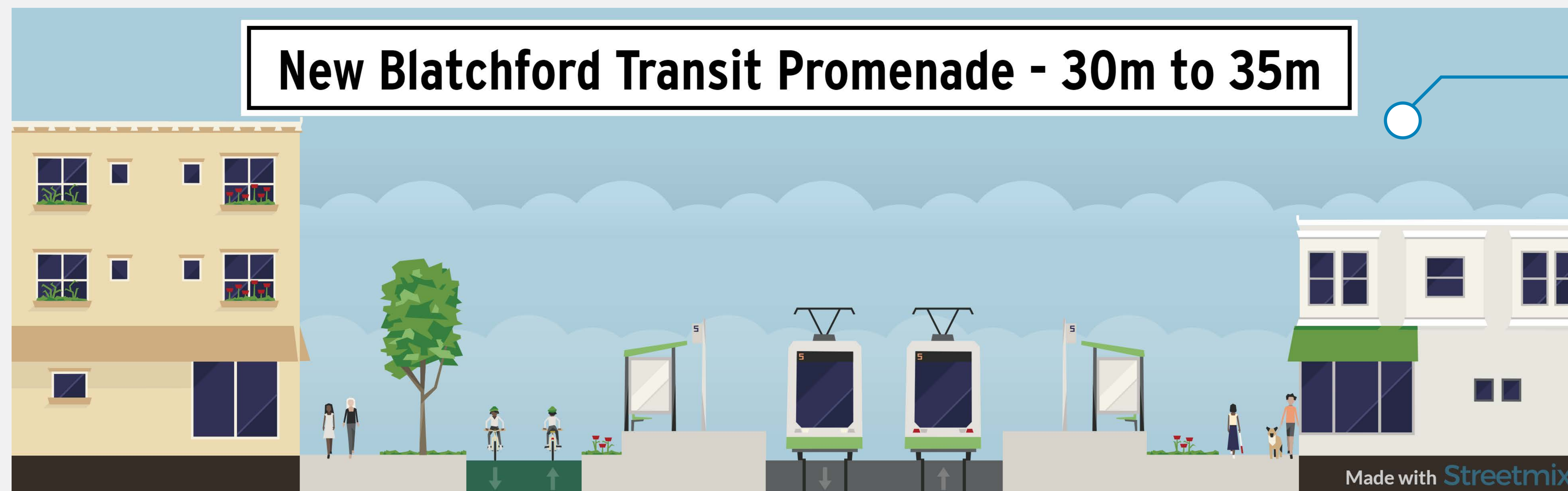
Previous Design - 45m to 50m



CHALLENGES

- Long pedestrian crossings
- Creates complex intersections for trains, vehicles, cyclists and pedestrians
- Wide cross section (approximately 45-50 metres) negatively impacts the urban feel of the LRT

New Blatchford Transit Promenade - 30m to 35m



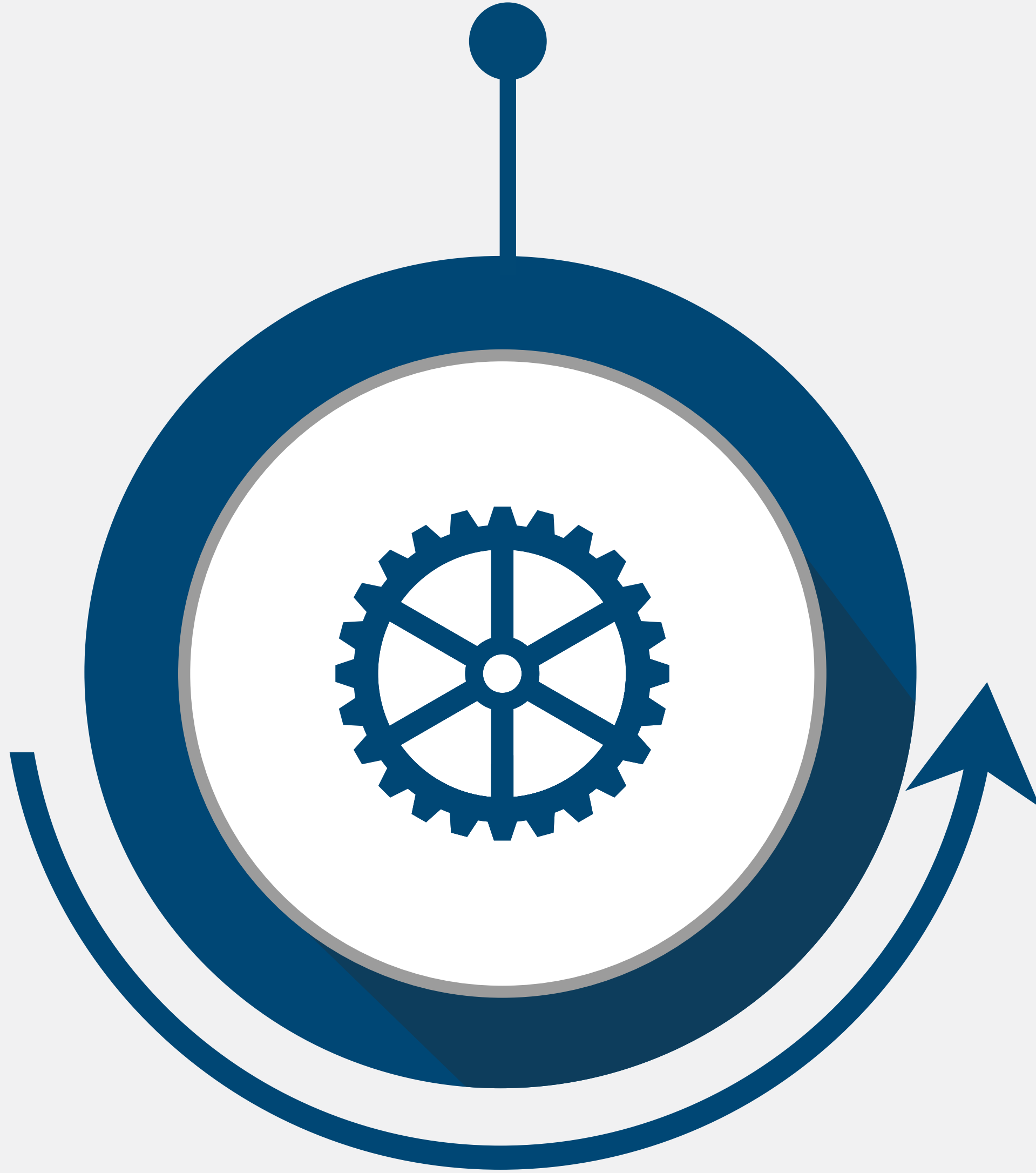
ENHANCEMENTS

- LRT along with pedestrians and cyclists will share the transit promenade
- Improved urban feel promotes a vibrant street life
- Convenient pedestrian/cycle only crossings of LRT tracks
- Reduced traffic noise
- Connects developments on both sides of the LRT through pedestrian areas and amenity zones
- Commercial and residential developments will integrate directly with the transit promenade and station
- Roads will be located one block away from the LRT corridor. Emergency and maintenance vehicles will have access to the LRT corridor
- Local road connections are provided on the east and west side of LRT

Metro Line

Next Steps

**DETAILED DESIGN AND
CONSTRUCTION PROCUREMENT
IN LATE 2019 & EARLY 2020**



**CONSTRUCTION
ANTICIPATED TO
BEGIN IN 2020**

**SERVICE OPERATION
ANTICIPATED TO
BEGIN IN 2024/2025**

