



Walk Edmonton

Walk Edmonton is an initiative that develops and shares maps and resources to facilitate and promote walking for both recreation and as active transportation. Visit our website for links to other walking resources and maps

edmonton.ca/walkedmonton
@WalkEdmonton
780-944-5339

Other Walking Resources

Alberta Centre for Active Living
centre4activeliving.ca
780-492-4863

Canada Walks
canadawalks.ca

Live Active Strategy 2016 – 2026

Quality active recreation and sport opportunities for all makes Edmonton a desirable city in all four seasons in which to live, learn, work and, most importantly play.

This strategy provides a road map for supporting the active recreational and sporting needs of all Edmontonians.
edmonton.ca/liveactive

UWALK
UWALK.ca

Shape (Safe Healthy Active People Everywhere)
shapeab.com

Get involved with Walk to School Week and Walking School Bus Programs

edmonton@shapeab.com
780-406-8530

Chambery/Elsinore Playground



The Benefits of Walking

Walking... a healthy journey!

Ranked the number one activity of choice among Canadians, walking is a prescription for improved health and wellness. Walk briskly for 30 minutes a day, 5 days a week, and minimize your risk for cardiovascular disease, stroke, Type 2 diabetes and some types of cancer. Additional benefits include weight management, blood pressure control and boosting good cholesterol (HDLs).

Other benefits of walking:

- Releases the body's tension and stress.
- Refreshes the mind and body, especially when walking outdoors.
- Allows you to connect with your community.
- Offers an excellent way to socialize with family and/or friends.
- Increases "eyes on the street", enhancing community safety.



Rapperswill

Walking with your Dog

Edmonton has over 40 locations where you can enjoy your walk while your dog is off-leash. Please remember that all sites where dogs are permitted to be off-leash are multi-use areas used by all. Your dog must be leashed when not in a designated off-leash area. There are no off-leash areas within Baturyn, Canossa, Chambery, Elsinore and Rapperswill. For more information on off-leash areas around the city, including details on boundaries, check the Parks for Paws Brochure or go to edmonton.ca (keyword off-leash)

There are 1,440 minutes in a day, schedule 30 of them for walking!

Local Contacts

Baturyn Community League
10505 172 Avenue NW
780-457-4347
baturyn.ca  
Rental inquiries: email
rentals@baturyn.ca

Baturyn Community Play School
Operates out of Baturyn Community Hall
780-473-1915

Baturyn Elementary School
10603 172 Avenue
780-456-6727

St. Charles Catholic Elementary School
10423 172 Avenue
780-456-5222

Castledowns Rec Centre
11520 153 Avenue

Edmonton Public Library — Castledowns
15379 Castledowns Road

Weather
780-468-4940
weather.gc.ca/canada

City Information
311

Information and referral to social, government, and health services.
211

Emergency Contacts

Police/Ambulance/Fire
911

Police Complaint Line
780-423-4567

Health Link
811

About the Community Walking Maps

This Community Walking Map is part of a series of walking guides. Each map is created as a joint project of Walk Edmonton and local Community groups to promote walkable communities. Contact us to find out if your community has an edition of this map series or to find out more about creating a map.

Walkedmonton@edmonton.ca
780-944-5339



Printed 2018

COMMUNITY WALKING MAP

Baturyn, Canossa, Chambery, Elsinore, Rapperswill



Baturyn, Canossa, Chambery, Elsinore, Rapperswill



Rapperswill is the newest addition to the Baturyn Community League and named after a castle in Switzerland. It is located west of Canossa and borders 127 Street. Development began in the 2010s and residences are still being built. Rapperswill has the largest business area of the neighbourhood making up the Baturyn Community League. It also has two lakes, one with a wooden walkway out into the water, and a playground. These five neighbourhoods make up the Baturyn Community League and the northern part of Castle Downs. It is bordered on north by the Anthony Henday, the east by 97 Street, the south by Castle Downs Road/167 Avenue and the west by 127 Street. It has easy access to Anthony Henday Drive and to the Canadian Forces Base. The neighbourhoods are home to many families, both old and new, businesses and places of worship. We encourage you to take a walk on one of the trails and find something new in the neighbourhood.

League is a "Super League"; BCL encompasses some of the new neighbourhoods being built in Castle Downs: Canossa, Chambery, Elsinore and Rapperswill. In the 1990s the area west of Baturyn began to be developed into Canossa. It is named after a castle in Italy; Canossa is predominantly a residential area with a centrally located lake and rock trail. Chambery was built to the north of Baturyn and was named after a chateau in France. There are two lakes with paved trails. Chambery and Elsinore share a playground, bike bumps and sports fields. Elsinore is to the east of Chambery and north of Baturyn and was named after a castle in Denmark. Elsinore has walking trails around its lake and some green space trails. Development of Chambery and Elsinore began after 1985 and is still continuing.

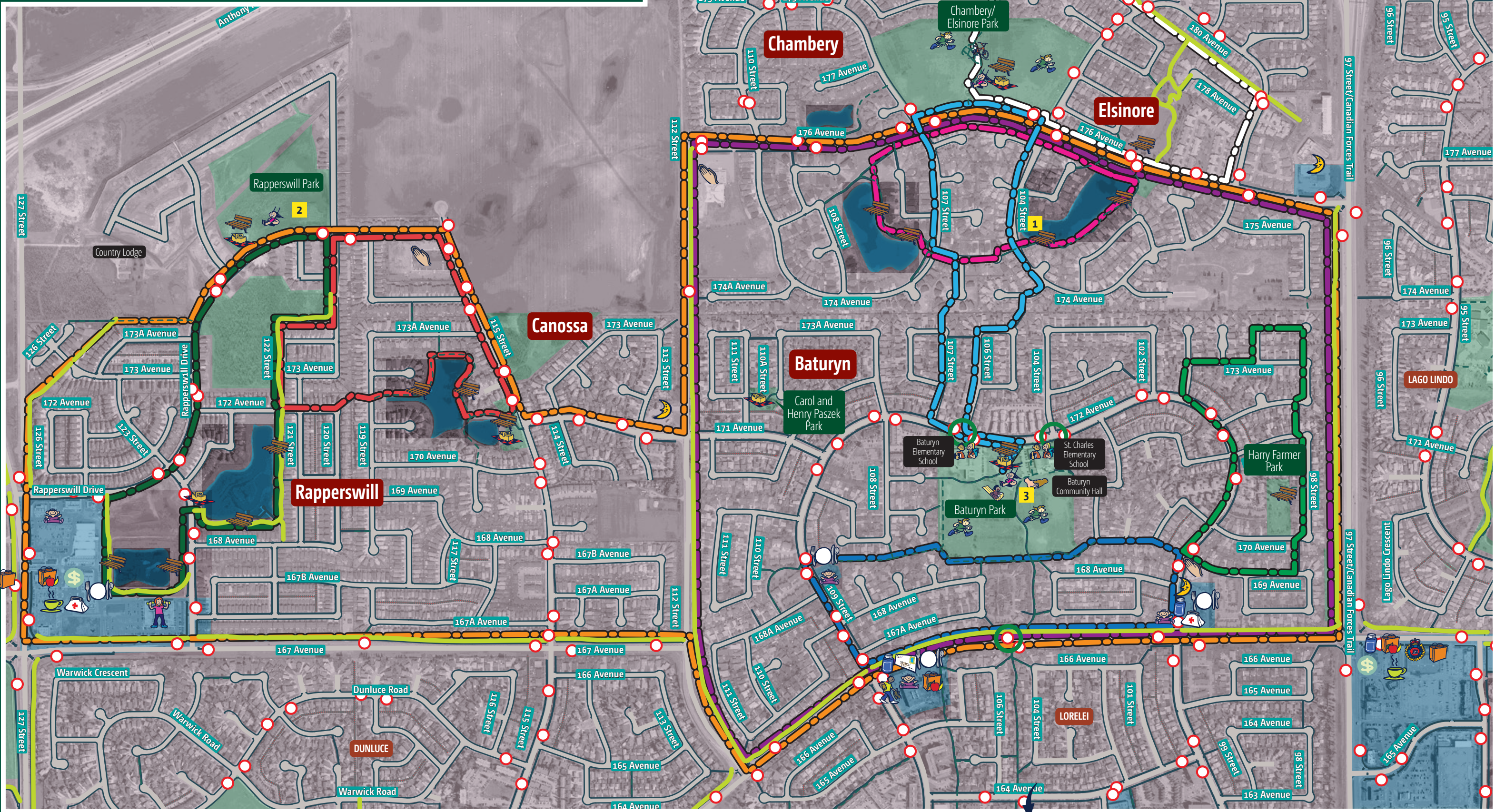
Prior to development this area of north central Edmonton was farmland. One of the farms on this land, the Horricks Dairy farm, is commemorated with a plaque in Elsinore. Today there are still a few fields in the greater Baturyn area where hay is baled by area farmers. The neighbourhood of Baturyn began in the 1970s. As part of the original Castle Downs development it was named after a castle; Baturyn Castle is found in the Ukraine. Two elementary schools are located in Baturyn: Baturyn Elementary School and St. Charles Elementary school. Baturyn also has sports fields, a playground, three neighbourhood parks and various businesses. In 1980 the Baturyn Community League was established. The league operates a rink and community hall located at 105 Street and 172 Avenue. Various programs and events are held at the hall throughout the year. The hall is available to rent for receptions, parties and events. The Baturyn Community



Lake in Elsinore

Rapperswill Playground

Baturyn Playground and Basketball Court



Legend

- | | | | |
|-------------------|-----------------------|-------------------|---------------|
| Bank | Fitness Centre | Playground | N |
| Bike Bumps | Grocery Store | Police Station | W |
| Child Care | Health Centre/Medical | Post Office | E |
| Coffee Shop | Pharmacy | Recreation Centre | S |
| Community Hall | Picnic Site | Restaurant | School |
| Convenience Store | Place of Worship | Rest Stop | Shopping Area |
| | | | Sports Field |
| | | | Toboggan Hill |

- Commercial
- Parkland
- Residential Area
- Alleys
- Paved Shared Use Paths
- Unpaved Shared Use Paths
- Sidewalk
- Roadway
- Bus Stop
- Crosswalk with Signal

Sample walking routes

- Harry Farmer Park Route 1.57 Km
- The Lake Route 1.66 Km
- Forest Route 2.12 Km
- Louise's Route 2.25 Km
- Horricks Route 2.3 Km
- The Playgrounds Route 2.6 Km
- Rapperswill Route 2.65 Km
- Blaine's Route 5.7 Km
- 9.5 Km Running Route 9.5 Km

